

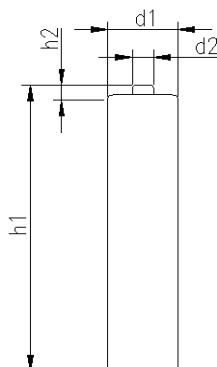
|  |           | Conditions |  |
|--|-----------|------------|--|
| <b>cell type:</b>                                  |           | NiMH       |  |
| <b>cell size:</b>                                  |           | AAA        |  |
| <b>nominal voltage:</b>                            | 1.2       | V          |  |
| <b>max. charge voltage:</b>                        | 1.5       | V          | at standard charge (0.1C / 20°C)                   |
| <b>capacity</b>                                    |           |            |  |
| nominal:   | 550       | mAh        | discharge at 0.2C                                  |
| minimum:   | 550       | mAh        | discharge at 0.2C                                  |
|  | 500       | mAh        | discharge at 1C                                    |
|  |           |            | 1.0V end discharge voltage                         |
|  |           |            | ta: 20°C   |
| <b>max. continuous discharge current:</b>          | 1650      | mA         | ta: 0...45°C                                       |
| <b>charge</b>                                      |           |            |  |
| standard charge:                                   | 55        | mA         | 14....16hrs  |
| quick charge:                                      | 170       | mA         | 4hrs   |
| fast charge:                                       | 550       | mA         | 1.1hrs   |
| recommended charge termination control parameters: | 0...5     | mV         | - ΔV (-deltaV)                                     |
|  | 0.8...1   | °C         | temperature rise per minute                        |
|  | 45...50   | °C         | TCO (temperature cut off)                          |
| trickle charge current:                            | 5...15    | mA         | (recommended)                                      |
| continuous overcharge: (less than 1 year)          | ≤ 55      | mA         | no conspicuous deformation<br>no leakage           |
| <b>internal resistance:</b> (impedance)            | ≤ 70      | mΩ         | at 1KHz<br>battery fully charged                   |
| <b>life expectancy:</b>                            | ≥ 500     | cycles     | acc. IEC standard                                  |
| <b>self discharge</b>                              |           |            |  |
| charge retention:                                  | ≥ 75      | %          | after 12 months<br>storage at 20°C                 |
| <b>initial capacity:</b>                           | ≥ 400     | mAh        | within 30 days after delivery<br>discharge at 0.2C |
| <b>ambient temperature range:</b>                  | 0...45    | °C         | standard charge                                    |
|  | 10...40   | °C         | fast charge  |
|  | - 20...65 | °C         | discharge  |
|  | - 20...50 | °C         | storage (≤3months)                                 |
|  | - 20...40 | °C         | storage (≤6months)                                 |
|  | - 20...30 | °C         | storage (≤24months)                                |

QCT1: 20/500/50  
QCT2: 30/450/55

**mechanical specifications**

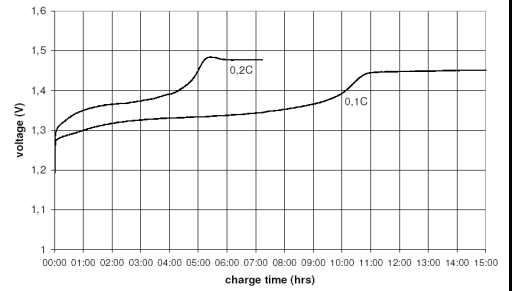
cell dimensions

|              |      |            |    |
|--------------|------|------------|----|
| diameter d1: |      | 10.3 - 0.7 | mm |
| diameter d2: | max. | 3.8        | mm |
| height h1:   |      | 44.5 - 1.5 | mm |
| height h2:   | min. | 0.8        | mm |
| weight:      |      | 12.5 ± 2   | g  |

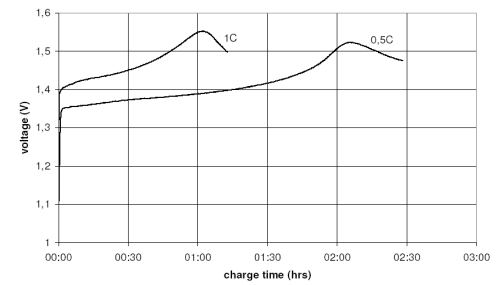


**Diagrams**

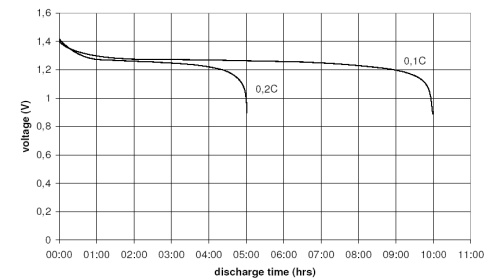
standard charge



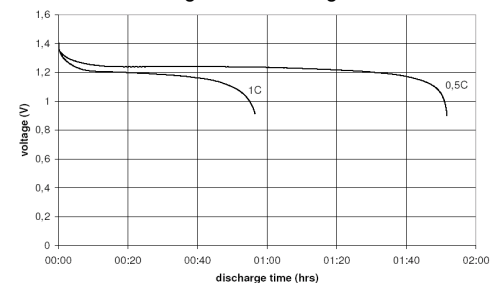
fast charge



low rate discharge



high rate discharge



|  |  |  |
|--|--|--|
|  | <b>ANSMANN Specifications for model:</b> | <b>NiMH Battery</b>                    |
|  |  | <b>AAA - 550mAh low self discharge</b> |
|  | data sheet no. / part no.                |  |
|  | supplier no.                             | 704271                                 |
|  | author / date                            | TG / 31.07.2018                        |