

battery type: Lithium - Manganese-Dioxide
battery size: IEC: 6AM6; ANSI: 1604LC; LA522; 9V-Block
chemical system: Li-MnO₂

nominal voltage: 9 V
open circuit voltage: 9.3...10.2 V (new battery)
 9.3...10.2 V (after 1 year storage at 20°C)

Conditions

capacity rated: 1200 mAh (all measurements at 23°C ambient)
 discharge at 1mA load; 24h/d
 End Voltage (EV): 5.4V
minimum: 950 mAh (discharge at 10mA load; 24h/d)
 End Voltage (EV): 5.4V
 900 mAh (discharge at 50mA load; 24h/d)
 End Voltage (EV): 5.4V

typical service output (new batteries)

≥ 65 h (load resistor: 600Ω; EV: 5.4V discharge 24h/d)
 ≥ 30 h (load resistor: 270Ω; EV: 5.4V discharge 1h/d)
 ≥ 70 h (load resistor: 620Ω; EV: 5.4V discharge 2h/d)

max. continuous discharge current: 600 mA

max. peak discharge current: 1000 mA

internal resistance: ≤ 2 Ω (new battery)
 at 1kHz, sine wave measurement according to IEC 896-2

shelf life: 10 years (under proper storage conditions)

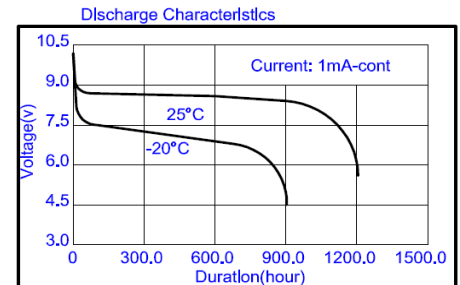
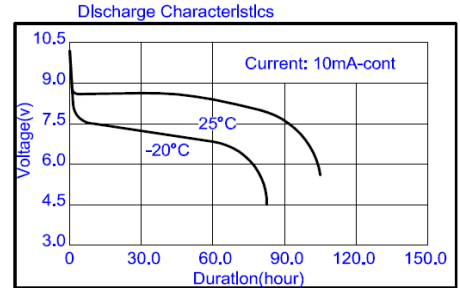
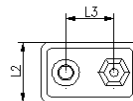
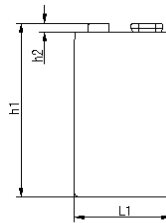
leakage resistance over discharge: no leakage (180ohms continuous discharge for 48h; ta: 20°C; RH: 60±15%)
high temperature: no leakage (store 20days at ta: 60°C; RH:90±5%)

ambient temperature range: - 40...60 °C

recommended storage conditions: -20...30 °C (ambient temperature)
 45...75 % (rel. humidity)

mechanical specifications

cell dimensions
 length L1: 26.5 -1 mm
 length L2: 17.5 -2 mm
 length L3: 12.7 ± 0.25 mm
 height h1: 48.5 -2 mm
 weight: 40 ± 3 g



| | | |
|--|--|---|
| | ANSMANN Specifications for model: | Ansmann Extreme Lithium Battery 9V - E-Block |
| | data sheet no. / part no. | |
| | supplier no. | 703331 |
| | author / date | TG / 18.07.2018 |