

## Specifications

### Output

socket:	Standard USB, type A, female	
voltage:	5 V DC $\pm 5\%$	
max. current:	2.1 A	continuous
auto cut off:	$\leq 110$ mA	(if the output current is lower than approx. 110mA, the output will be switched off automatically)
safety functions:	protection against external short circuit, overload and deep discharge	

### Input

socket:	Micro USB, female
voltage:	5 V DC $\pm 5\%$
charge current:	800...1600 mA
charge time:	8...10 h

### Indicators

charge/battery status:	5 LEDs (blue)	show the charge state of the internal battery in 20% steps - while charge is in progress - when pressing the charge state test button
charge end:		all 5 LEDs light permanently when the internal battery is fully charged

### Internal Battery

cell type:	LiCoO <sub>2</sub>	Lithium Polymer
size:	customized	(prismatic cells)
number of cells:	2	
configuration:	1S2P	
nominal voltage:	3.7 V	
capacity:	10400 mAh	(2 x 5200mAh)
energy:	38.5 Wh	
life time expectance: (C>60% of min. capacity)	$\geq 500$ cycles	

### Temperature range

operating temperature:	- 10...40 °C	
storage temperature:	- 20...45 °C	
	0...25 °C	recommended

### Mechanical specifications

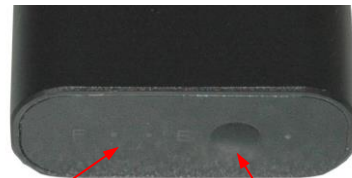
length L1:	159 $\pm 2$ mm
width W1:	50 $\pm 1$ mm
height H1:	22 $\pm 1$ mm
weight (device only):	305 $\pm 10$ g

### Housing

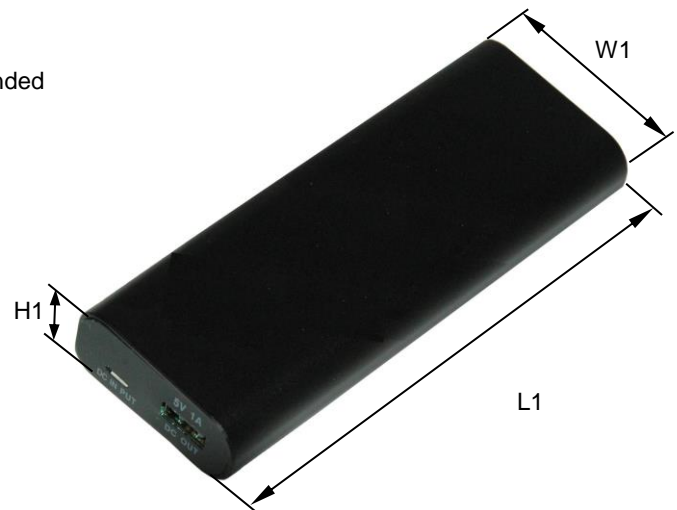
material:	aluminum, anodized
colour:	black

### Accessories:

micro USB to USB cable



battery status indicator LEDs      test button



cable length: 550mm  
colour: black



#### ANSMANN Specifications for model:

data sheet no. / part no.

supplier no.

author / date

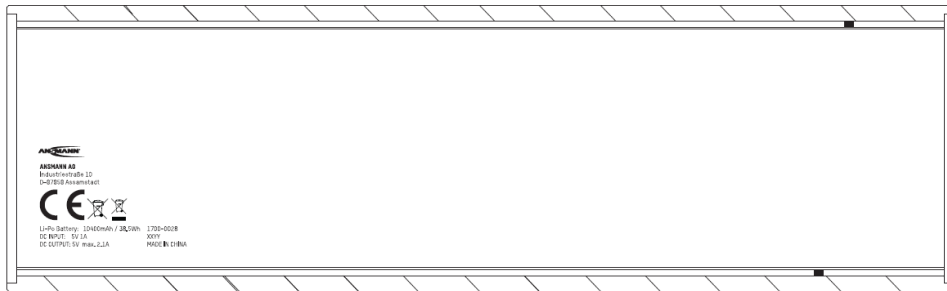
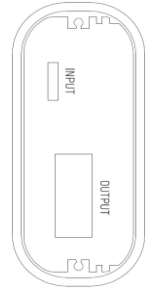
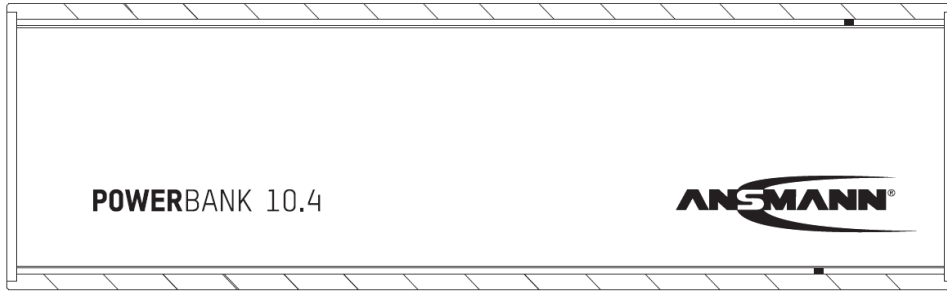
#### ANSMANN Powerbank Model 10.4 (10400mAh)


1700-0028

703572

TG / 30.04.2015

**Printing:**



	<b>ANSMANN Specifications for model:</b>	<b>ANSMANN Powerbank Model 10.4 (10400mAh)</b>
	data sheet no. / part no.	1700-0028
	supplier no.	703572
	author / date	TG / 30.04.2015

Manufacturer reserves the right to alter or amend the design, model and specification without prior notice