

## DC Power Connectors

Order code	Manufacturer code	Description
22-3796	39012021	2 WAY MINI-FIT PANEL PLUG (RC)
22-3798	n/a	4 WAY MINI-FIT PANEL PLUG (RC)
22-3800	39012061	6 WAY MINI-FIT PANEL PLUG
22-3802	n/a	n/a
22-3804	n/a	10 WAY MINI-FIT PANEL PLUG
22-3806	n/a	12 WAY MINI-FIT PANEL PLUG

DC Power Connectors	Page 1 of 2
The enclosed information is believed to be correct, Information may change 'without notice' due to product improvement. Users should ensure that the product is suitable for their use. E. & O. E.	Revision A 04/07/2003

## Mini-Fit, Jr.™ Power Connectors

### Molex 39-01-2xx1 Series – Mini-Fit, Jr.™ Panel Mount Plug – Dual Row

#### Features & Benefits

- Wire-to-wire plug for panel-mounted or free-hanging applications
- Positive housing locks to mate with Mini-Fit, Jr. receptacle
- Fully isolated terminals to protect contacts from damage
- Uses standard Mini-Fit series terminals

#### Reference Information

Product Specification: PS-5556-0001  
 UL File No: E29179  
 CSA File No: LR19980  
 TUV License No: R75142  
 Mates with: 5557  
 Use with: 5558 or 30490 terminals

#### Electrical

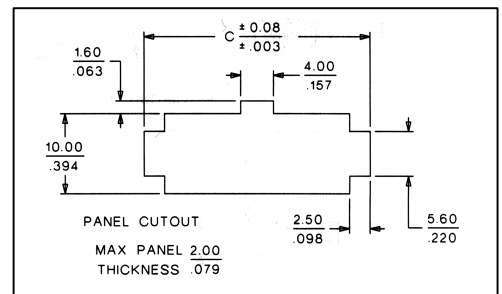
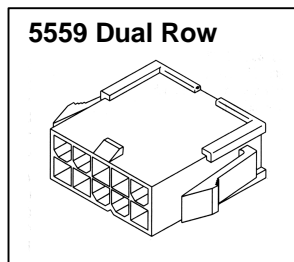
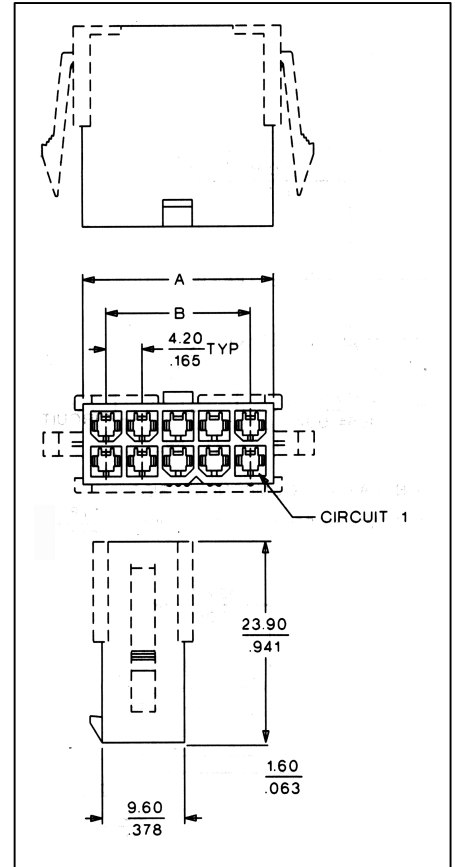
Voltage: 600V  
 Current: 9.0A max.  
 Contact Resistance: 10mΩ max.  
 Dielectric Withstand Voltage: 1500V AC  
 Insulation Resistance: 1000MΩ

#### Mechanical

Contact Insertion Force: 1.5kg max.  
 Contact Retention to Housing: 3.0kg min.  
 Wire Pull-Out Force: 9.0kg min.  
 Insertion Force to PCB: 5.0kg max.  
 Mating Force: 0.7kg (1.54lb) per circuit max.  
 Unmating Force: 0.35kg (0.7lb) per circuit min.  
 Normal Force: 200g min.  
 Durability: 30 cycles

#### Physical

Housing: 6/6 nylon, UL 94V-2 or 94V-0  
 Contact: Brass or Phosphor Bronze  
 Plating: Tin  
 Temperature: -40 to +105°C



Molex Ref No.	Circuits	Dimensions		
		A	B	C
39-01-2021	2	5.40 (.213)		10.80 (.425)
39-01-2041	4	9.60 (.378)	4.20 (.165)	15.00 (.591)
39-01-2061	6	13.80 (.543)	8.40 (.331)	19.20 (.756)
39-01-2081	8	18.00 (.709)	12.60 (.496)	23.40 (.921)
39-01-2101	10	22.20 (.874)	16.80 (.661)	27.60 (1.087)
39-01-2121	12	26.40 (1.039)	21.00 (.827)	31.80 (1.252)