



Intertek Testing Services Ltd., Shanghai
 TFH Division
 Block B, Jinling Business Square, No.801 Yi Shan Road,
 Shanghai, China, 200233
 Tel: +86 21 6120 6565
 Fax: +86 21 6127 9740
 E-mail: labtest.shanghai@intertek.com
 www.intertek.com
 www.intertek.com.cn
 China Toll-Free: 800 999 1338

TEST REPORT

NUMBER: SHAH00228906

APPLICANT: COOPER BUSSMANN TECHNICAL CENTER
 955 SHENG LI ROAD, EAST AREA OF
 SHANGHAI ZHANGJIANG HIGH-TECH PARK,
 SHANGHAI, CHINA 201201.
 ATTN: SUSAN ZHAO

DATE: NOV 22, 2010

SAMPLE DESCRIPTION:

ONE (1) SUBMITTED SAMPLE SAID TO BE **SILVERY METAL.**

ITEM NAME : **EYELET.**
 PART NO. : FX100704.
 P.O. NO. : 4503317380.

TESTS CONDUCTED:

AS REQUESTED BY THE APPLICANT, FOR DETAILS REFER TO ATTACHED PAGE(S)

SUMMARY:

<u>TESTED SAMPLE</u>	<u>STANDARD</u>	<u>RESULT</u>
SUBMITTED SAMPLE	WITH REFERENCE TO TEST METHOD OF IEC 62321 EDITION 1.0: 2008 AND MAXIMUM CONCENTRATION LIMITS QUOTED FROM ROHS DIRECTIVES 2002/95/EC AND AMENDMENT 2005/618/EC	PASS

TO BE CONTINUED

PREPARED AND CHECKED BY:
 FOR INTERTEK TESTING SERVICES
 LTD., SHANGHAI

AUTHORIZED BY:
 FOR INTERTEK TESTING SERVICES
 LTD., SHANGHAI

MYRA LV
 CHEMICAL LAB SENIOR MANAGER

STEPHEN TSANG
 GENERAL MANAGER



Intertek Testing Services Ltd., Shanghai
 TFH Division
 Block B, Jinling Business Square, No.801 Yi Shan Road,
 Shanghai, China, 200233
 Tel: +86 21 6120 6565
 Fax: +86 21 6127 9740
 E-mail: labtest.shanghai@intertek.com
 www.intertek.com
 www.intertek.com.cn
 China Toll-Free: 800 999 1338

TEST REPORT

NUMBER: SHAH00228906

TESTS CONDUCTED

(A) TEST RESULT SUMMARY:

TESTING ITEM	RESULT
CADMIUM (Cd) CONTENT (mg/kg)	ND
LEAD (Pb) CONTENT (mg/kg)	20
MERCURY (Hg) CONTENT (mg/kg)	ND
CHROMIUM (VI) (Cr ⁶⁺) RESULT (BY BOILING WATER EXTRACTION ON METAL) (mg/kg WITH 50cm ²)	ND

REMARK:

mg/kg = MILLIGRAM PER KILOGRAM = ppm
 mg/kg WITH 50cm² = MILLIGRAM PER KILOGRAM WITH 50 SQUARE CENTIMETER
 ND = NOT DETECTED

(B) ROHS REQUIREMENT:

RESTRICTED SUBSTANCES	LIMITS
CADMIUM (Cd)	0.01% (100 mg/kg)
LEAD (Pb)	0.1% (1000 mg/kg)
MERCURY (Hg)	0.1% (1000 mg/kg)
CHROMIUM (VI) (Cr ⁶⁺)	0.1% (1000 mg/kg)
POLYBROMINATED BIPHENYLS (PBBs)	0.1% (1000 mg/kg)
POLYBROMINATED DIPHENYL ETHERS (PBDEs)	0.1% (1000 mg/kg)

THE ABOVE LIMITS WERE QUOTED FROM 2002/95/EC AND AMENDMENT 2005/618/EC FOR HOMOGENEOUS MATERIAL.

TO BE CONTINUED

TEST REPORT

NUMBER: SHAH00228906

TESTS CONDUCTED

(C) TEST METHOD:

TESTING ITEM	TESTING METHOD	REPORTING LIMIT
CADMIUM (Cd) CONTENT	WITH REFERENCE TO IEC 62321 EDITION 1.0: 2008, BY ACID DIGESTION UNTIL THE TESTED SAMPLE WAS TOTALLY DISSOLVED AND DETERMINED BY ICP-OES	2 mg/kg
LEAD (Pb) CONTENT	WITH REFERENCE TO IEC 62321 EDITION 1.0: 2008, BY ACID DIGESTION UNTIL THE TESTED SAMPLE WAS TOTALLY DISSOLVED AND DETERMINED BY ICP-OES	2 mg/kg
MERCURY (Hg) CONTENT	WITH REFERENCE TO IEC 62321 EDITION 1.0: 2008, BY ACID DIGESTION UNTIL THE TESTED SAMPLE WAS TOTALLY DISSOLVED AND DETERMINED BY ICP-OES	2 mg/kg
CHROMIUM (VI) (Cr ⁶⁺) CONTENT (FOR METAL)	WITH REFERENCE TO IEC 62321 EDITION 1.0: 2008, BY BOILING WATER EXTRACTION AND DETERMINED BY UV-VIS SPECTROPHOTOMETER	0.02mg/kg WITH 50cm ² (IN TESTING SOLUTION)

DATE SAMPLE RECEIVED:NOV.9, 2010

TESTING PERIOD:NOV.9, 2010 TO NOV.12, 2010

TO BE CONTINUED



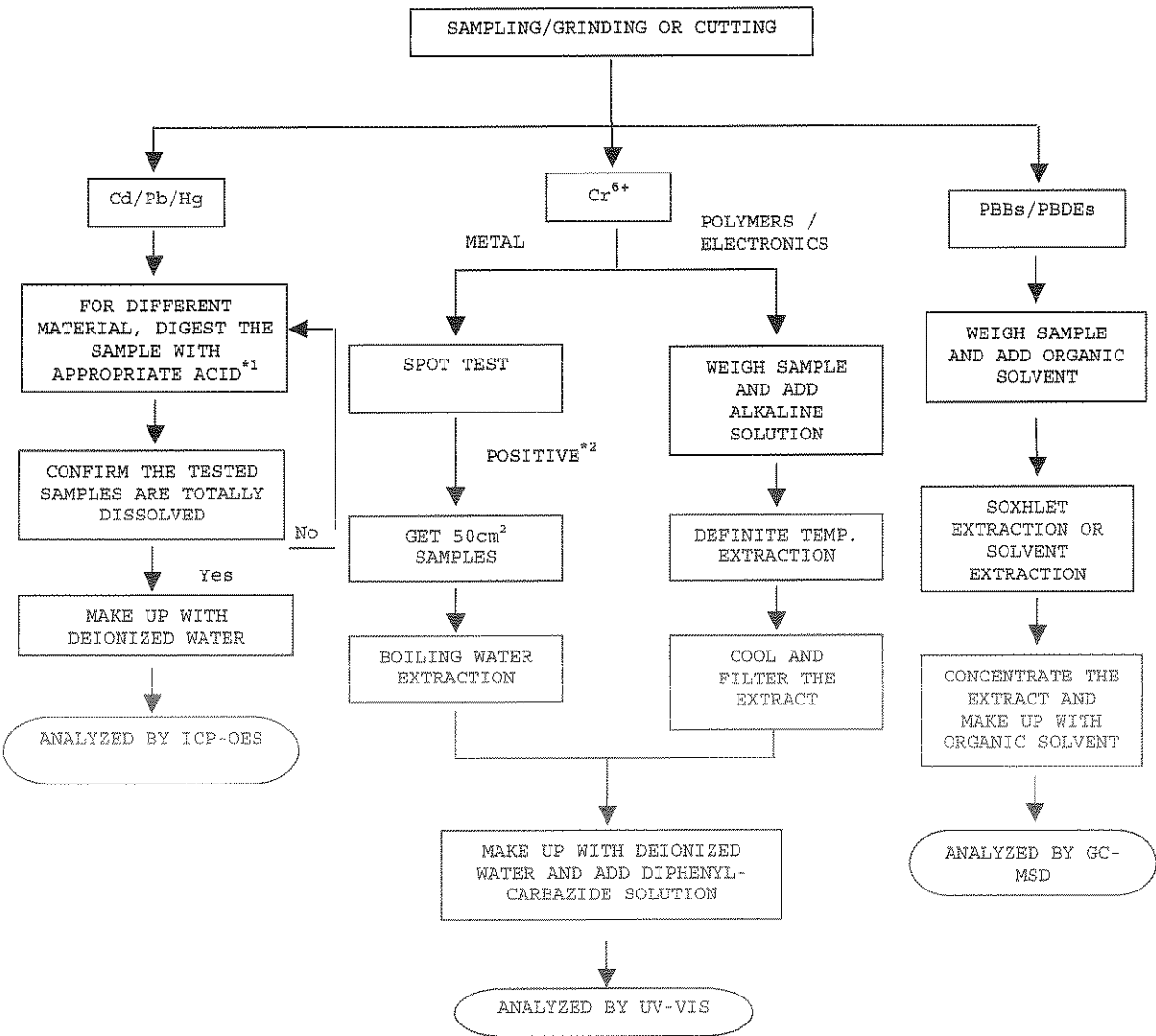
TEST REPORT

NUMBER: SHAH00228906

TESTS CONDUCTED

(D) MEASUREMENT FLOWCHART:

TEST FOR Cd/Pb/Hg/Cr (VI)/PBBs/PBDEs CONTENTS
 REFERENCE STANDARD: IEC 62321 EDITION 1.0: 2008



 TO BE CONTINUED



Intertek Testing Services Ltd., Shanghai
 TFH Division
 Block B, Jinling Business Square, No.801 Yi Shan Road,
 Shanghai, China, 200233
 Tel: +86 21 6120 6565
 Fax: +86 21 6127 9740
 E-mail: labtest.shanghai@intertek.com
 www.intertek.com
 www.intertek.com.cn
 China Toll-Free: 800 999 1338

TEST REPORT

NUMBER: SHAH00228906

TESTS CONDUCTED
 REMARKS:

*1: LIST OF APPROPRIATE ACID:

MATERIAL	ACID ADDED FOR DIGESTION
POLYMERS	HNO ₃ , HCl, HF, H ₂ O ₂ , H ₃ BO ₃
METALS	HNO ₃ , HCl, HF
ELECTRONICS	HNO ₃ , HCl, H ₂ O ₂ , HBF ₄

*2: IF THE RESULT OF SPOT TEST IS POSITIVE, CHROMIUM VI WOULD BE DETERMINED AS DETECTED.

TO BE CONTINUED



Intertek Testing Services Ltd., Shanghai
TFH Division
Block B, Jinling Business Square, No. 801 Yi Shan Road,
Shanghai, China, 200233
Tel: +86 21 6120 6565
Fax: +86 21 6127 9740
E-mail: labtest.shanghai@intertek.com
www.intertek.com
www.intertek.com.cn
China Toll-Free: 800 999 1338

TEST REPORT

NUMBER: SHAH00228906

TESTS CONDUCTED



END OF REPORT



Intertek Testing Services Ltd., Shanghai
 TFH Division
 Block B, Jinling Business Square, No.801 Yi Shan Road,
 Shanghai, China, 200233
 Tel: +86 21 6120 6565
 Fax: +86 21 6127 9740
 E-mail: labtest.shanghai@intertek.com
 www.intertek.com
 www.intertek.com.cn
 China Toll-Free: 800 999 1338

TEST REPORT

NUMBER: SHAH00228904

APPLICANT: COOPER BUSSMANN TECHNICAL CENTER
 955 SHENG LI ROAD, EAST AREA OF
 SHANGHAI ZHANGJIANG HIGH-TECH PARK,
 SHANGHAI, CHINA 201201.
 ATTN: SUSAN ZHAO

DATE: NOV 22, 2010

SAMPLE DESCRIPTION:

ONE (1) SUBMITTED SAMPLE SAID TO BE SILVERY METAL.

ITEM NAME : CAP.
 PART NO. : FC056180.
 P.O. NO. : 4503317380.

TESTS CONDUCTED:

AS REQUESTED BY THE APPLICANT, FOR DETAILS REFER TO ATTACHED PAGE(S)

SUMMARY:

<u>TESTED SAMPLE</u>	<u>STANDARD</u>	<u>RESULT</u>
SUBMITTED SAMPLE	WITH REFERENCE TO TEST METHOD OF IEC 62321 EDITION 1.0: 2008 AND MAXIMUM CONCENTRATION LIMITS QUOTED FROM ROHS DIRECTIVES 2002/95/EC AND AMENDMENT 2005/618/EC	PASS

TO BE CONTINUED

PREPARED AND CHECKED BY:
 FOR INTERTEK TESTING SERVICES
 LTD., SHANGHAI

AUTHORIZED BY:
 FOR INTERTEK TESTING SERVICES
 LTD., SHANGHAI

MYRA LV
 CHEMICAL LAB SENIOR MANAGER

STEPHEN TSANG
 GENERAL MANAGER



Intertek Testing Services Ltd., Shanghai
 TFH Division
 Block B, Jinling Business Square, No.801 Yi Shan Road,
 Shanghai, China, 200233
 Tel: +86 21 6120 6665
 Fax: +86 21 6127 9740
 E-mail: labtest.shanghai@intertek.com
 www.intertek.com
 www.intertek.com.cn
 China Toll-Free: 800 999 1338

TEST REPORT

NUMBER: SHAH00228904

TESTS CONDUCTED

(A) TEST RESULT SUMMARY:

TESTING ITEM	RESULT
CADMIUM (Cd) CONTENT (mg/kg)	ND
LEAD (Pb) CONTENT (mg/kg)	30
MERCURY (Hg) CONTENT (mg/kg)	ND
CHROMIUM (VI) (Cr ⁶⁺) RESULT (BY BOILING WATER EXTRACTION ON METAL) (mg/kg WITH 50cm ²)	ND

REMARK:

mg/kg = MILLIGRAM PER KILOGRAM = ppm
 mg/kg WITH 50cm² = MILLIGRAM PER KILOGRAM WITH 50 SQUARE CENTIMETER
 ND = NOT DETECTED

(B) RoHS REQUIREMENT:

RESTRICTED SUBSTANCES	LIMITS
CADMIUM (Cd)	0.01% (100 mg/kg)
LEAD (Pb)	0.1% (1000 mg/kg)
MERCURY (Hg)	0.1% (1000 mg/kg)
CHROMIUM (VI) (Cr ⁶⁺)	0.1% (1000 mg/kg)
POLYBROMINATED BIPHENYLS (PBBs)	0.1% (1000 mg/kg)
POLYBROMINATED DIPHENYL ETHERS (PBDEs)	0.1% (1000 mg/kg)

THE ABOVE LIMITS WERE QUOTED FROM 2002/95/EC AND AMENDMENT 2005/618/EC FOR HOMOGENEOUS MATERIAL.

TO BE CONTINUED



Intertek Testing Services Ltd., Shanghai
 TFH Division
 Block B, Jinling Business Square, No.801 Yi Shan Road,
 Shanghai, China, 200233
 Tel: +86 21 6120 6565
 Fax: +86 21 6127 9740
 E-mail: labtest.shanghai@intertek.com
 www.intertek.com
 www.intertek.com.cn
 China Toll-Free: 800 999 1338

TEST REPORT

NUMBER: SHAH00228904

TESTS CONDUCTED
 (C) TEST METHOD:

TESTING ITEM	TESTING METHOD	REPORTING LIMIT
CADMIUM (Cd) CONTENT	WITH REFERENCE TO IEC 62321 EDITION 1.0: 2008, BY ACID DIGESTION UNTIL THE TESTED SAMPLE WAS TOTALLY DISSOLVED AND DETERMINED BY ICP-OES	2 mg/kg
LEAD (Pb) CONTENT	WITH REFERENCE TO IEC 62321 EDITION 1.0: 2008, BY ACID DIGESTION UNTIL THE TESTED SAMPLE WAS TOTALLY DISSOLVED AND DETERMINED BY ICP-OES	2 mg/kg
MERCURY (Hg) CONTENT	WITH REFERENCE TO IEC 62321 EDITION 1.0: 2008, BY ACID DIGESTION UNTIL THE TESTED SAMPLE WAS TOTALLY DISSOLVED AND DETERMINED BY ICP-OES	2 mg/kg
CHROMIUM (VI) (Cr ⁶⁺) CONTENT (FOR METAL)	WITH REFERENCE TO IEC 62321 EDITION 1.0: 2008, BY BOILING WATER EXTRACTION AND DETERMINED BY UV-VIS SPECTROPHOTOMETER	0.02mg/kg WITH 50cm ² (IN TESTING SOLUTION)

DATE SAMPLE RECEIVED:NOV.9, 2010
 TESTING PERIOD:NOV.9, 2010 TO NOV.12, 2010

TO BE CONTINUED



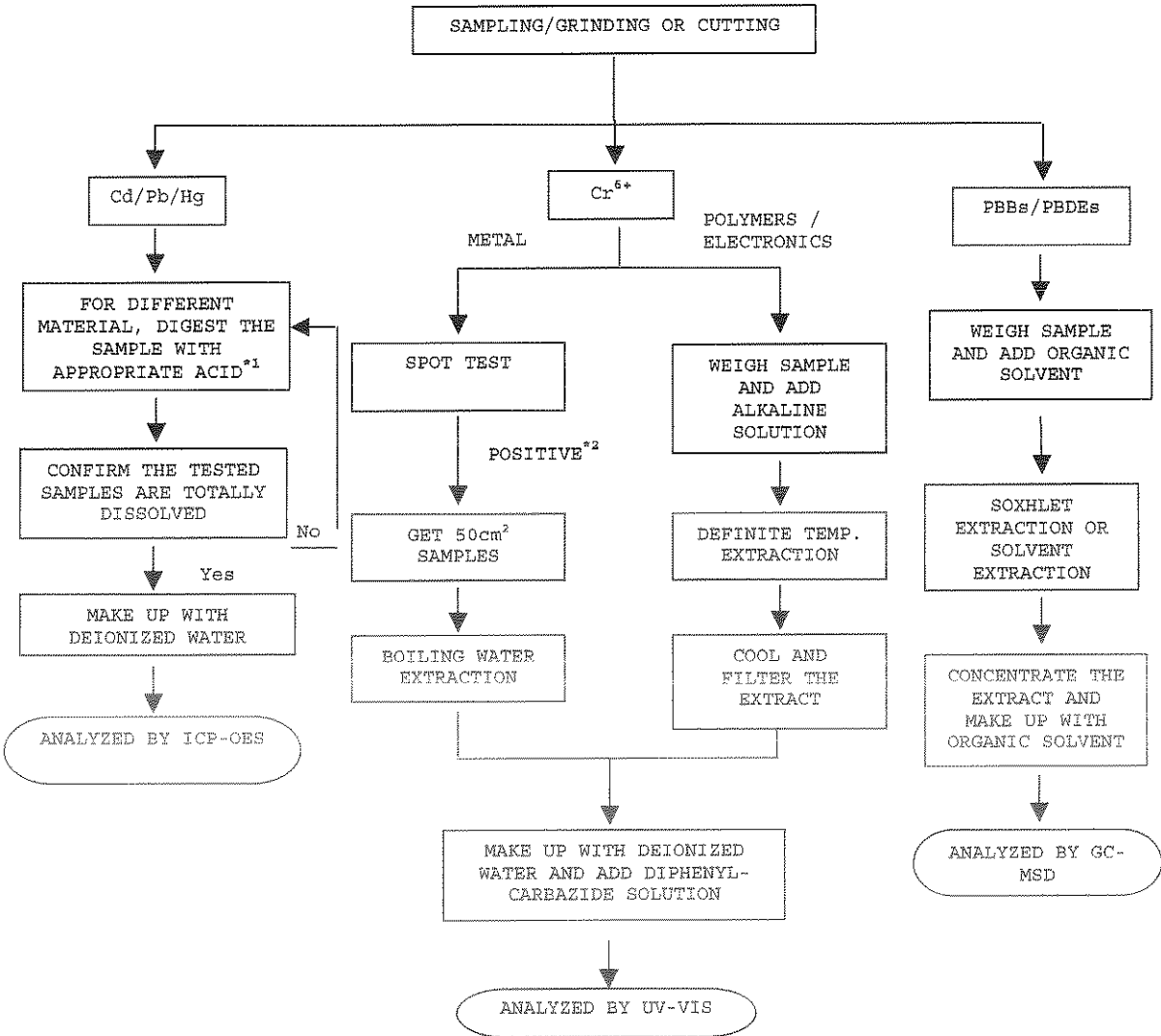
TEST REPORT

NUMBER: SHAH00228904

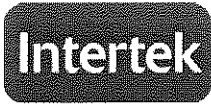
TESTS CONDUCTED

(D) MEASUREMENT FLOWCHART:

TEST FOR Cd/Pb/Hg/Cr (VI)/PBBs/PBDEs CONTENTS
 REFERENCE STANDARD: IEC 62321 EDITION 1.0: 2008



 TO BE CONTINUED



Intertek Testing Services Ltd., Shanghai
 TFH Division
 Block B, Jinling Business Square, No.801 Yi Shan Road,
 Shanghai, China, 200233
 Tel: +86 21 6120 6565
 Fax: +86 21 6127 9740
 E-mail: labtest.shanghai@intertek.com
 www.intertek.com
 www.intertek.com.cn
 China Toll-Free: 800 999 1338

TEST REPORT

NUMBER: SHAH00228904

TESTS CONDUCTED
 REMARKS:

*1: LIST OF APPROPRIATE ACID:

MATERIAL	ACID ADDED FOR DIGESTION
POLYMERS	HNO ₃ , HCl, HF, H ₂ O ₂ , H ₃ BO ₃
METALS	HNO ₃ , HCl, HF
ELECTRONICS	HNO ₃ , HCl, H ₂ O ₂ , HBF ₄

*2: IF THE RESULT OF SPOT TEST IS POSITIVE, CHROMIUM VI WOULD BE DETERMINED AS DETECTED.

TO BE CONTINUED



Intertek Testing Services Ltd., Shanghai
TFH Division
Block B, Jinling Business Square, No.801 Yi Shan Road,
Shanghai, China, 200233
Tel: +86 21 6120 6565
Fax: +86 21 6127 9740
E-mail: labtest.shanghai@intertek.com
www.intertek.com
www.intertek.com.cn
China Toll-Free: 800 999 1338

TEST REPORT

NUMBER: SHAH00228904

TESTS CONDUCTED



END OF REPORT



Intertek Testing Services Ltd., Shanghai
 TFH Division
 Block B, Jinling Business Square, No.801 Yi Shan Road,
 Shanghai, China, 200233
 Tel: +86 21 6120 6565
 Fax: +86 21 6127 9740
 E-mail: labtest.shanghai@intertek.com
 www.intertek.com
 www.intertek.com.cn
 China Toll-Free: 800 999 1338

TEST REPORT

NUMBER: SHAH00222949

APPLICANT: COOPER BUSSMANN TECHNICAL CENTER
 955 SHENG LI ROAD, EAST AREA OF
 SHANGHAI ZHANGJIANG HIGH-TECH PARK,
 SHANGHAI, CHINA 201201.
 ATTN: SUSAN ZHAO

DATE: OCT 15, 2010

SAMPLE DESCRIPTION:

ONE (1) PIECE OF SUBMITTED SAMPLE SAID TO BE **SILVER GREY WIRE**.
 ITEM NAME : **ELEMENT**.
 PART NO. : FW190XXX.
 P.O. NO. : 4503207851.

TESTS CONDUCTED:

AS REQUESTED BY THE APPLICANT, FOR DETAILS REFER TO ATTACHED PAGE(S)

SUMMARY:

<u>TESTED SAMPLE</u>	<u>STANDARD</u>	<u>RESULT</u>
SUBMITTED SAMPLE	WITH REFERENCE TO TEST METHOD OF IEC 62321 EDITION 1.0: 2008 AND MAXIMUM CONCENTRATION LIMITS QUOTED FROM ROHS DIRECTIVES 2002/95/EC AND AMENDMENT 2005/618/EC	PASS

TO BE CONTINUED

PREPARED AND CHECKED BY:
 FOR INTERTEK TESTING SERVICES
 LTD., SHANGHAI

AUTHORIZED BY:
 FOR INTERTEK TESTING SERVICES
 LTD., SHANGHAI

MYRA LV
 CHEMICAL LAB SENIOR MANAGER

STEPHEN TSANG
 GENERAL MANAGER



TEST REPORT

NUMBER: SHAH00222949

TESTS CONDUCTED

(A) TEST RESULT SUMMARY:

TESTING ITEM	RESULT
CADMIUM (Cd) CONTENT (mg/kg)	ND
LEAD (Pb) CONTENT (mg/kg)	15
MERCURY (Hg) CONTENT (mg/kg)	ND
CHROMIUM (VI) (Cr ⁶⁺) RESULT (BY BOILING WATER EXTRACTION ON METAL) (mg/kg WITH 50cm ²)	ND

REMARK:

mg/kg = MILLIGRAM PER KILOGRAM = ppm

mg/kg WITH 50cm² = MILLIGRAM PER KILOGRAM WITH 50 SQUARE CENTIMETER

ND = NOT DETECTED

(B) ROHS REQUIREMENT:

RESTRICTED SUBSTANCES	LIMITS
CADMIUM (Cd)	0.01% (100 mg/kg)
LEAD (Pb)	0.1% (1000 mg/kg)
MERCURY (Hg)	0.1% (1000 mg/kg)
CHROMIUM (VI) (Cr ⁶⁺)	0.1% (1000 mg/kg)
POLYBROMINATED BIPHENYLS (PBBs)	0.1% (1000 mg/kg)
POLYBROMINATED DIPHENYL ETHERS (PBDEs)	0.1% (1000 mg/kg)

THE ABOVE LIMITS WERE QUOTED FROM 2002/95/EC AND AMENDMENT 2005/618/EC FOR HOMOGENEOUS MATERIAL.

 TO BE CONTINUED



Intertek Testing Services Ltd., Shanghai
 TFH Division
 Block B, Jinling Business Square, No.801 Yi Shan Road,
 Shanghai, China, 200233
 Tel: +86 21 6120 6565
 Fax: +86 21 6127 9740
 E-mail: labtest.shanghai@intertek.com
 www.intertek.com
 www.intertek.com.cn
 China Toll-Free: 800 999 1338

TEST REPORT

NUMBER: SHAH00222949

TESTS CONDUCTED

(C) TEST METHOD:

<u>TESTING ITEM</u>	<u>TESTING METHOD</u>	<u>REPORTING LIMIT</u>
CADMIUM (Cd) CONTENT	WITH REFERENCE TO IEC 62321 EDITION 1.0: 2008, BY ACID DIGESTION UNTIL THE TESTED SAMPLE WAS TOTALLY DISSOLVED AND DETERMINED BY ICP-OES	2 mg/kg
LEAD (Pb) CONTENT	WITH REFERENCE TO IEC 62321 EDITION 1.0: 2008, BY ACID DIGESTION UNTIL THE TESTED SAMPLE WAS TOTALLY DISSOLVED AND DETERMINED BY ICP-OES	2 mg/kg
MERCURY (Hg) CONTENT	WITH REFERENCE TO IEC 62321 EDITION 1.0: 2008, BY ACID DIGESTION UNTIL THE TESTED SAMPLE WAS TOTALLY DISSOLVED AND DETERMINED BY ICP-OES	2 mg/kg
CHROMIUM (VI) (Cr ⁶⁺) CONTENT (FOR METAL)	WITH REFERENCE TO IEC 62321 EDITION 1.0: 2008, BY BOILING WATER EXTRACTION AND DETERMINED BY UV-VIS SPECTROPHOTOMETER	0.02mg/kg WITH 50cm ² (IN TESTING SOLUTION)

DATE SAMPLE RECEIVED : OCT.11, 2010

TESTING PERIOD : OCT.11, 2010 TO OCT.14, 2010

TO BE CONTINUED



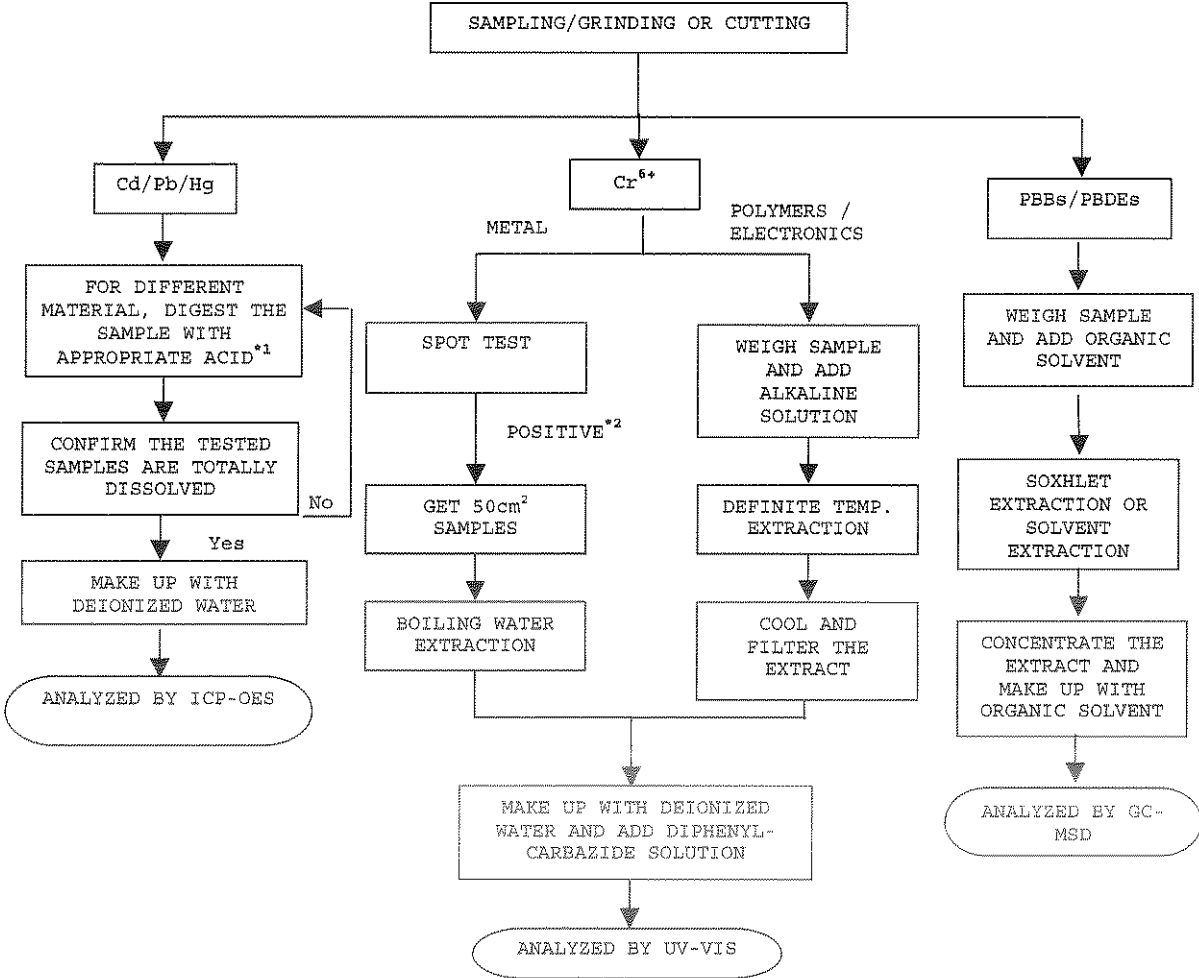
TEST REPORT

NUMBER: SHAH00222949

TESTS CONDUCTED

(D) MEASUREMENT FLOWCHART:

TEST FOR Cd/Pb/Hg/Cr (VI)/PBBs/PBDEs CONTENTS
 REFERENCE STANDARD: IEC 62321 EDITION 1.0: 2008



 TO BE CONTINUED



Intertek Testing Services Ltd., Shanghai
 TFH Division
 Block B, Jinling Business Square, No.801 Yi Shan Road,
 Shanghai, China, 200233
 Tel: +86 21 6120 6565
 Fax: +86 21 6127 9740
 E-mail: labtest.shanghai@intertek.com
 www.intertek.com
 www.intertek.com.cn
 China Toll-Free: 800 999 1338

TEST REPORT

NUMBER: SHAH00222949

TESTS CONDUCTED
 REMARKS:

*1: LIST OF APPROPRIATE ACID:

<u>MATERIAL</u>	<u>ACID ADDED FOR DIGESTION</u>
POLYMERS	HNO ₃ , HCl, HF, H ₂ O ₂ , H ₃ BO ₃
METALS	HNO ₃ , HCl, HF
ELECTRONICS	HNO ₃ , HCl, H ₂ O ₂ , HBF ₄

*2: IF THE RESULT OF SPOT TEST IS POSITIVE, CHROMIUM VI WOULD BE DETERMINED AS DETECTED.

TO BE CONTINUED



Intertek Testing Services Ltd., Shanghai
 TFH Division
 Block B, Jinling Business Square, No. 801 Yi Shan Road,
 Shanghai, China, 200233
 Tel: +86 21 6120 6566
 Fax: +86 21 6127 9740
 E-mail: labtest.shanghai@intertek.com
 www.intertek.com
 www.intertek.com.cn
 China Toll-Free: 800 999 1338

TEST REPORT

NO. : SHAH00222949

TESTS CONDUCTED



END OF REPORT

NU



Intertek Testing Services Ltd., Shanghai
 TFH Division
 Block B, Jinling Business Square, No.801 Yi Shan Road,
 Shanghai, China, 200233
 Tel: +86 21 6120 6565
 Fax: +86 21 6127 9740
 E-mail: labtest.shanghai@intertek.com
 www.intertek.com
 www.intertek.com.cn
 China Toll-Free: 800 999 1338

TEST REPORT

NUMBER: SHAH00228907

APPLICANT: COOPER BUSSMANN TECHNICAL CENTER
 955 SHENG LI ROAD, EAST AREA OF
 SHANGHAI ZHANGJIANG HIGH-TECH PARK,
 SHANGHAI, CHINA 201201.
 ATTN: SUSAN ZHAO

DATE: NOV 22, 2010

SAMPLE DESCRIPTION:

ONE (1) SUBMITTED SAMPLE SAID TO BE **WHITE TUBE**.
 ITEM NAME : TUBE.
 PART NO. : FB031500.
 P.O. NO. : 4503317380.

TESTS CONDUCTED:

AS REQUESTED BY THE APPLICANT, FOR DETAILS REFER TO ATTACHED PAGE(S)

CONCLUSION:

<u>TESTED SAMPLE</u>	<u>STANDARD</u>	<u>RESULT</u>
SUBMITTED SAMPLE	WITH REFERENCE TO TEST METHOD OF IEC 62321 EDITION 1.0: 2008 AND MAXIMUM CONCENTRATION LIMITS QUOTED FROM ROHS DIRECTIVES 2002/95/EC AND AMENDMENT 2005/618/EC	PASS

TO BE CONTINUED

PREPARED AND CHECKED BY:
 FOR INTERTEK TESTING SERVICES
 LTD., SHANGHAI

AUTHORIZED BY:
 FOR INTERTEK TESTING SERVICES
 LTD., SHANGHAI

MYRA LV
 CHEMICAL LAB SENIOR MANAGER

STEPHEN TSANG
 GENERAL MANAGER



Intertek Testing Services Ltd., Shanghai
 TFH Division
 Block B, Jinling Business Square, No.801 Yi Shan Road,
 Shanghai, China, 200233
 Tel: +86 21 6120 6565
 Fax: +86 21 6127 9740
 E-mail: labtest.shanghai@intertek.com
 www.intertek.com
 www.intertek.com.cn
 China Toll-Free: 800 999 1338

TEST REPORT

NUMBER: SHAH00228907

TESTS CONDUCTED

(A) TEST RESULT SUMMARY:

TESTING ITEM	RESULT
CADMIUM (Cd) CONTENT (mg/kg)	ND
LEAD (Pb) CONTENT (mg/kg)	ND
MERCURY (Hg) CONTENT (mg/kg)	ND
CHROMIUM (VI) (Cr ⁶⁺) CONTENT (mg/kg) (FOR NON-METAL)	ND
POLYBROMINATED BIPHENYLS (PBBs) (mg/kg)	
MONOBROMO BIPHENYLS (MonoBB)	ND
DIBROMO BIPHENYLS (DiBB)	ND
TRIBROMO BIPHENYLS (TriBB)	ND
TETRABROMO BIPHENYLS (TetraBB)	ND
PENTABROMO BIPHENYLS (PentaBB)	ND
HEXABROMO BIPHENYLS (HexaBB)	ND
HEPTABROMO BIPHENYLS (HeptaBB)	ND
OCTABROMO BIPHENYLS (OctaBB)	ND
NONABROMO BIPHENYLS (NonaBB)	ND
DECABROMO BIPHENYL (DecaBB)	ND
POLYBROMINATED DIPHENYL ETHERS (PBDEs) (mg/kg)	
MONOBROMO DIPHENYL ETHERS (MonoBDE)	ND
DIBROMO DIPHENYL ETHERS (DiBDE)	ND
TRIBROMO DIPHENYL ETHERS (TriBDE)	ND
TETRABROMO DIPHENYL ETHERS (TetraBDE)	ND
PENTABROMO DIPHENYL ETHERS (PentaBDE)	ND
HEXABROMO DIPHENYL ETHERS (HexaBDE)	ND
HEPTABROMO DIPHENYL ETHERS (HeptaBDE)	ND
OCTABROMO DIPHENYL ETHERS (OctaBDE)	ND
NONABROMO DIPHENYL ETHERS (NonaBDE)	ND
DECABROMO DIPHENYL ETHER (DecaBDE)	ND

REMARK:

mg/kg = MILLIGRAM PER KILOGRAM = ppm

ND = NOT DETECTED

TO BE CONTINUED



TEST REPORT

NUMBER: SHAH00228907

TESTS CONDUCTED

(B) RoHS REQUIREMENT:

RESTRICTED SUBSTANCES	LIMITS
CADMIUM (Cd)	0.01% (100 mg/kg)
LEAD (Pb)	0.1% (1000 mg/kg)
MERCURY (Hg)	0.1% (1000 mg/kg)
CHROMIUM (VI) (Cr ⁶⁺)	0.1% (1000 mg/kg)
POLYBROMINATED BIPHENYLS (PBBs)	0.1% (1000 mg/kg)
POLYBROMINATED DIPHENYL ETHERS (PBDEs)	0.1% (1000 mg/kg)

THE ABOVE LIMITS WERE QUOTED FROM 2002/95/EC AND AMENDMENT 2005/618/EC FOR HOMOGENEOUS MATERIAL.

(C) TEST METHOD:

TESTING ITEM	TESTING METHOD	REPORTING LIMIT
CADMIUM (Cd) CONTENT	WITH REFERENCE TO IEC 62321 EDITION 1.0: 2008, BY ACID DIGESTION UNTIL THE TESTED SAMPLE WAS TOTALLY DISSOLVED AND DETERMINED BY ICP-OES	2 mg/kg
LEAD (Pb) CONTENT	WITH REFERENCE TO IEC 62321 EDITION 1.0: 2008, BY ACID DIGESTION UNTIL THE TESTED SAMPLE WAS TOTALLY DISSOLVED AND DETERMINED BY ICP-OES	2 mg/kg
MERCURY (Hg) CONTENT	WITH REFERENCE TO IEC 62321 EDITION 1.0: 2008, BY ACID DIGESTION UNTIL THE TESTED SAMPLE WAS TOTALLY DISSOLVED AND DETERMINED BY ICP-OES	2 mg/kg
CHROMIUM (VI) (Cr ⁶⁺) CONTENT (FOR NON-METAL)	WITH REFERENCE TO IEC 62321 EDITION 1.0: 2008, BY ALKALINE DIGESTION AND DETERMINED BY UV-VIS SPECTROPHOTOMETER	1 mg/kg
POLYBROMINATED BIPHENYLS (PBBs) & POLYBROMINATED DIPHENYL ETHERS (PBDEs)	WITH REFERENCE TO IEC IEC 62321 EDITION 1.0: 2008, BY SOLVENT EXTRACTION AND DETERMINED BY GC/MS AND FURTHER HPLC CONFIRMATION WHEN NECESSARY.	5 mg/kg

DATE SAMPLE RECEIVED: NOV.9, 2010

TESTING PERIOD: NOV.9, 2010 TO NOV.12, 2010

TO BE CONTINUED



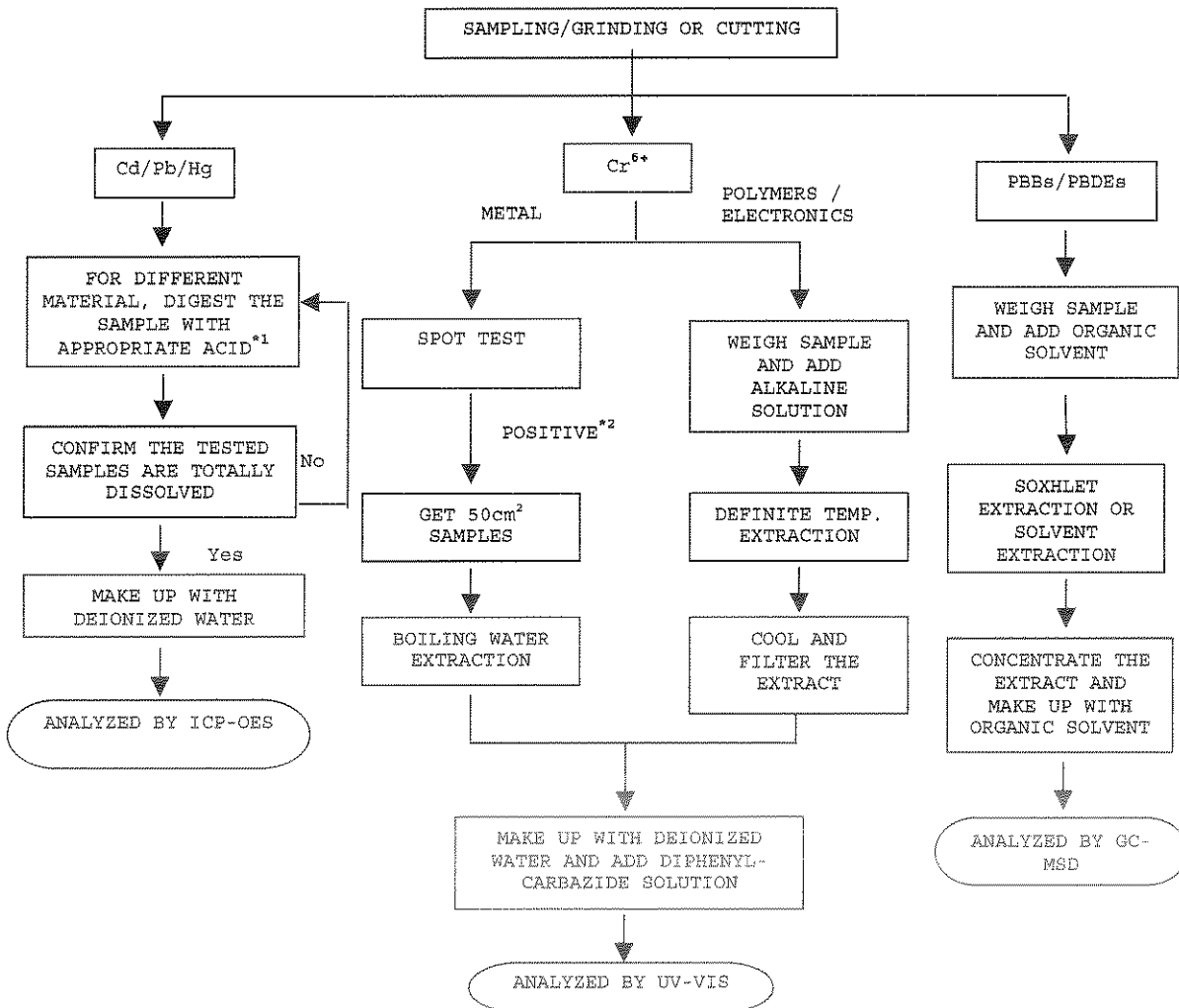
TEST REPORT

NUMBER: SHAH00228907

TESTS CONDUCTED

(D) MEASUREMENT FLOWCHART:

TEST FOR Cd/Pb/Hg/Cr (VI)/PBBs/PBDEs CONTENTS
 REFERENCE STANDARD: IEC 62321 EDITION 1.0: 2008



TO BE CONTINUED



Intertek Testing Services Ltd., Shanghai
 TFH Division
 Block B, Jinling Business Square, No.801 Yi Shan Road,
 Shanghai, China, 200233
 Tel: +86 21 6120 6565
 Fax: +86 21 6127 9740
 E-mail: labtest.shanghai@intertek.com
 www.intertek.com
 www.intertek.com.cn
 China Toll-Free: 800 999 1338

TEST REPORT

NUMBER: SHAH00228907

TESTS CONDUCTED

REMARKS:

*1: LIST OF APPROPRIATE ACID:

<u>MATERIAL</u>	<u>ACID ADDED FOR DIGESTION</u>
POLYMERS	HNO ₃ , HCl, HF, H ₂ O ₂ , H ₃ BO ₃
METALS	HNO ₃ , HCl, HF
ELECTRONICS	HNO ₃ , HCl, H ₂ O ₂ , HBF ₄

*2: IF THE RESULT OF SPOT TEST IS POSITIVE, CHROMIUM VI WOULD BE DETERMINED AS DETECTED.

TO BE CONTINUED

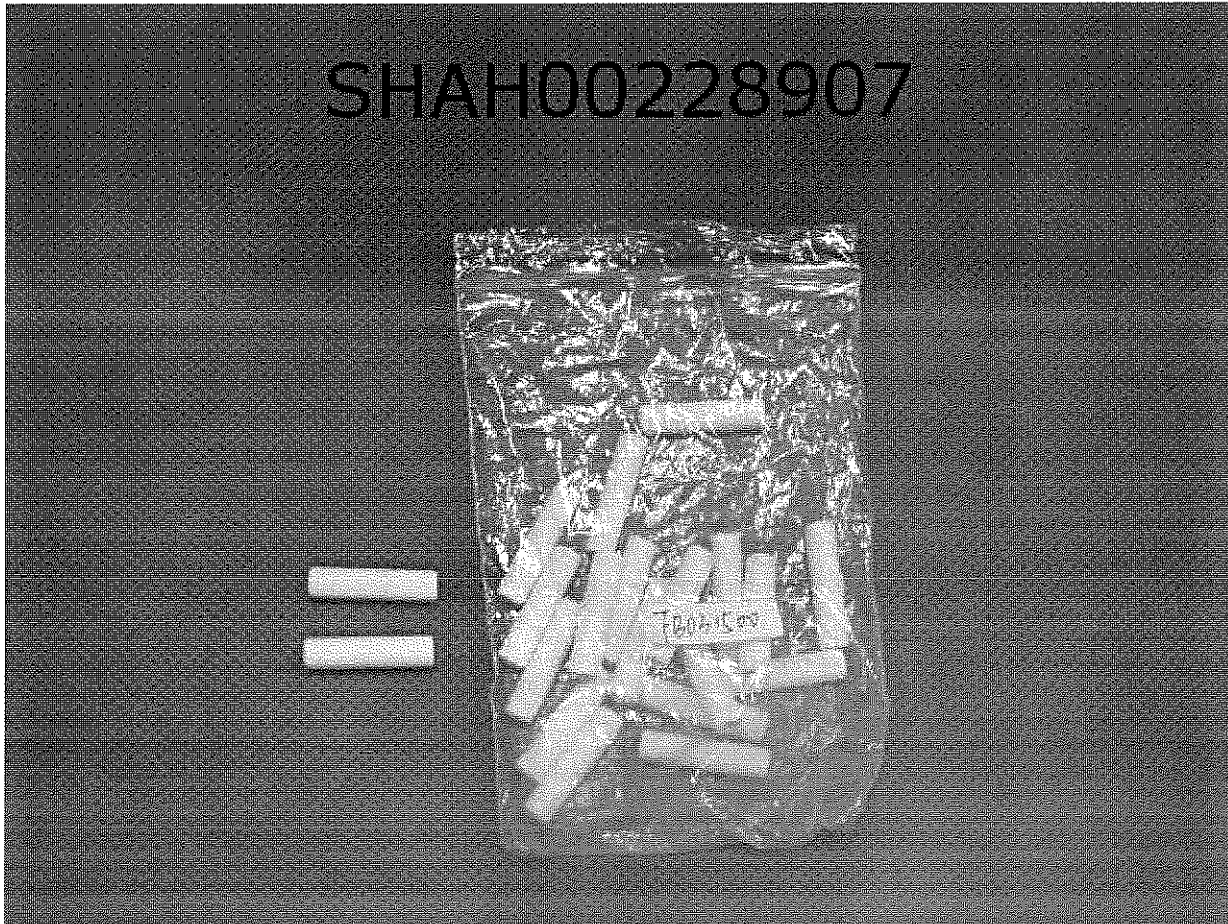


Intertek Testing Services Ltd., Shanghai
TFH Division
Block B, Jinling Business Square, No.801 Yi Shan Road,
Shanghai, China, 200233
Tel: +86 21 6120 6565
Fax: +86 21 6127 9740
E-mail: labtest.shanghai@intertek.com
www.intertek.com
www.intertek.com.cn
China Toll-Free: 800 999 1338

TEST REPORT

NUMBER: SHAH00228907

TESTS CONDUCTED



END OF REPORT



TEST REPORT

NUMBER: SHAH00248585

APPLICANT: COOPER BUSSMANN TECHNICAL CENTER
955 SHENG LI ROAD, EAST AREA OF
SHANGHAI ZHANGJIANG HIGH-TECH PARK,
SHANGHAI, CHINA 201201.
ATTN: SUSAN ZHAO

DATE: APR 01, 2011

SAMPLE DESCRIPTION:

ONE(1) SUBMITTED SAMPLE SAID TO BE **SAND**.

ITEM NAME : SAND.
PART NO. : FF450010.
P.O. NO. : 4503611382.

TESTS CONDUCTED:

AS REQUESTED BY THE APPLICANT, FOR DETAILS REFER TO ATTACHED PAGE(S)

TO BE CONTINUED

PREPARED AND CHECKED BY:
FOR INTERTEK TESTING SERVICES
LTD., SHANGHAI

AUTHORIZED BY:
FOR INTERTEK TESTING SERVICES
LTD., SHANGHAI

MYRA LV
CHEMICAL LAB SENIOR MANAGER

STEPHEN TSANG
GENERAL MANAGER



TEST REPORT

NUMBER: SHAH00248585

TESTS CONDUCTED

(A) TEST RESULT SUMMARY:

TESTING ITEM	RESULT
CADMIUM (Cd) CONTENT (mg/kg)	ND
LEAD (Pb) CONTENT (mg/kg)	ND
MERCURY (Hg) CONTENT (mg/kg)	ND
CHROMIUM (VI) (Cr ⁶⁺) CONTENT (mg/kg) (FOR NON-METAL)	ND
POLYBROMINATED BIPHENYLS (PBBs) (mg/kg)	
MONOBROMO BIPHENYLS (MonoBB)	ND
DIBROMO BIPHENYLS (DiBB)	ND
TRIBROMO BIPHENYLS (TriBB)	ND
TETRABROMO BIPHENYLS (TetraBB)	ND
PENTABROMO BIPHENYLS (PentaBB)	ND
HEXABROMO BIPHENYLS (HexaBB)	ND
HEPTABROMO BIPHENYLS (HeptaBB)	ND
OCTABROMO BIPHENYLS (OctaBB)	ND
NONABROMO BIPHENYLS (NonaBB)	ND
DECABROMO BIPHENYL (DecaBB)	ND
POLYBROMINATED DIPHENYL ETHERS (PBDEs) (mg/kg)	
MONOBROMO DIPHENYL ETHERS (MonoBDE)	ND
DIBROMO DIPHENYL ETHERS (DiBDE)	ND
TRIBROMO DIPHENYL ETHERS (TriBDE)	ND
TETRABROMO DIPHENYL ETHERS (TetraBDE)	ND
PENTABROMO DIPHENYL ETHERS (PentaBDE)	ND
HEXABROMO DIPHENYL ETHERS (HexaBDE)	ND
HEPTABROMO DIPHENYL ETHERS (HeptaBDE)	ND
OCTABROMO DIPHENYL ETHERS (OctaBDE)	ND
NONABROMO DIPHENYL ETHERS (NonaBDE)	ND
DECABROMO DIPHENYL ETHER (DecaBDE)	ND

REMARK:

mg/kg = MILLIGRAM PER KILOGRAM = ppm

ND = NOT DETECTED

TO BE CONTINUED



TEST REPORT

NUMBER: SHAH00248585

TESTS CONDUCTED

(B) RoHS REQUIREMENT:

RESTRICTED SUBSTANCES	LIMITS
CADMIUM (Cd)	0.01% (100 mg/kg)
LEAD (Pb)	0.1% (1000 mg/kg)
MERCURY (Hg)	0.1% (1000 mg/kg)
CHROMIUM (VI) (Cr ⁶⁺)	0.1% (1000 mg/kg)
POLYBROMINATED BIPHENYLS (PBBs)	0.1% (1000 mg/kg)
POLYBROMINATED DIPHENYL ETHERS (PBDEs)	0.1% (1000 mg/kg)

THE ABOVE LIMITS WERE QUOTED FROM 2002/95/EC AND AMENDMENT 2005/618/EC FOR HOMOGENEOUS MATERIAL.

(C) TEST METHOD:

<u>TESTING ITEM</u>	<u>TESTING METHOD</u>	<u>REPORTING LIMIT</u>
CADMIUM (Cd) CONTENT	WITH REFERENCE TO IEC 62321 EDITION 1.0: 2008, BY ACID DIGESTION UNTIL THE TESTED SAMPLE WAS TOTALLY DISSOLVED AND DETERMINED BY ICP-OES	2 mg/kg
LEAD (Pb) CONTENT	WITH REFERENCE TO IEC 62321 EDITION 1.0: 2008, BY ACID DIGESTION UNTIL THE TESTED SAMPLE WAS TOTALLY DISSOLVED AND DETERMINED BY ICP-OES	2 mg/kg
MERCURY (Hg) CONTENT	WITH REFERENCE TO IEC 62321 EDITION 1.0: 2008, BY ACID DIGESTION UNTIL THE TESTED SAMPLE WAS TOTALLY DISSOLVED AND DETERMINED BY ICP-OES	2 mg/kg
CHROMIUM (VI) (Cr ⁶⁺) CONTENT (FOR NON-METAL)	WITH REFERENCE TO IEC 62321 EDITION 1.0: 2008, BY ALKALINE DIGESTION AND DETERMINED BY UV-VIS SPECTROPHOTOMETER	1 mg/kg
POLYBROMINATED BIPHENYLS (PBBs) & POLYBROMINATED DIPHENYL ETHERS (PBDEs)	WITH REFERENCE TO IEC IEC 62321 EDITION 1.0: 2008, BY SOLVENT EXTRACTION AND DETERMINED BY GC/MS AND FURTHER HPLC CONFIRMATION WHEN NECESSARY.	5 mg/kg

DATE SAMPLE RECEIVED: MAR.23, 2011

TESTING PERIOD: MAR.23, 2011 TO MAR.28, 2011

TO BE CONTINUED

TEST REPORT

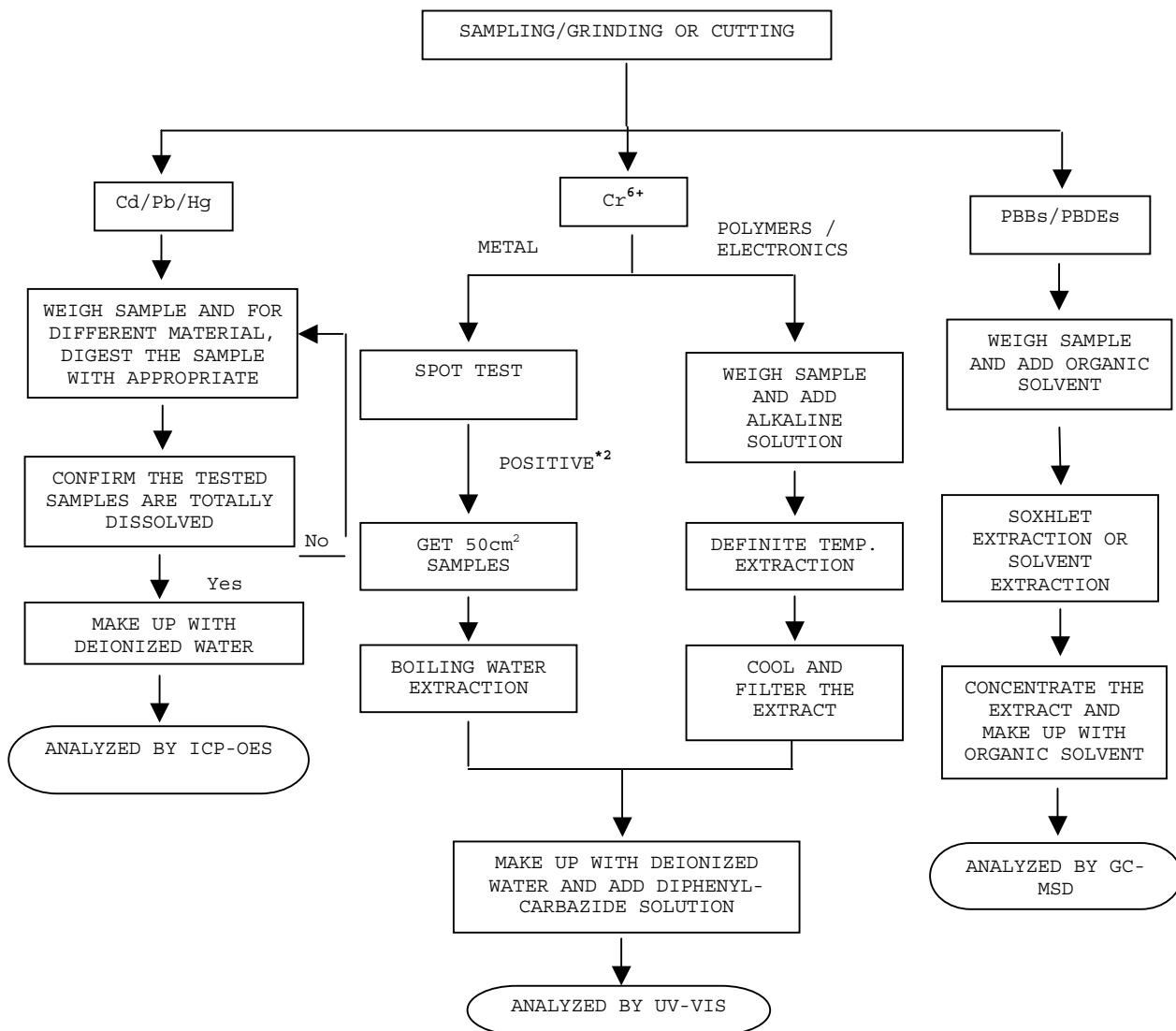
NUMBER: SHAH00248585

TESTS CONDUCTED

(D) MEASUREMENT FLOWCHART:

TEST FOR Cd/Pb/Hg/Cr (VI)/PBBs/PBDEs CONTENTS

REFERENCE STANDARD: IEC 62321 EDITION 1.0: 2008



TO BE CONTINUED



TEST REPORT

NUMBER: SHAH00248585

TESTS CONDUCTED

REMARKS:

*1: LIST OF APPROPRIATE ACID:

<u>MATERIAL</u>	<u>ACID ADDED FOR DIGESTION</u>
POLYMERS	HNO ₃ , HCl, HF, H ₂ O ₂ , H ₃ BO ₃
METALS	HNO ₃ , HCl, HF
ELECTRONICS	HNO ₃ , HCl, H ₂ O ₂ , HBF ₄

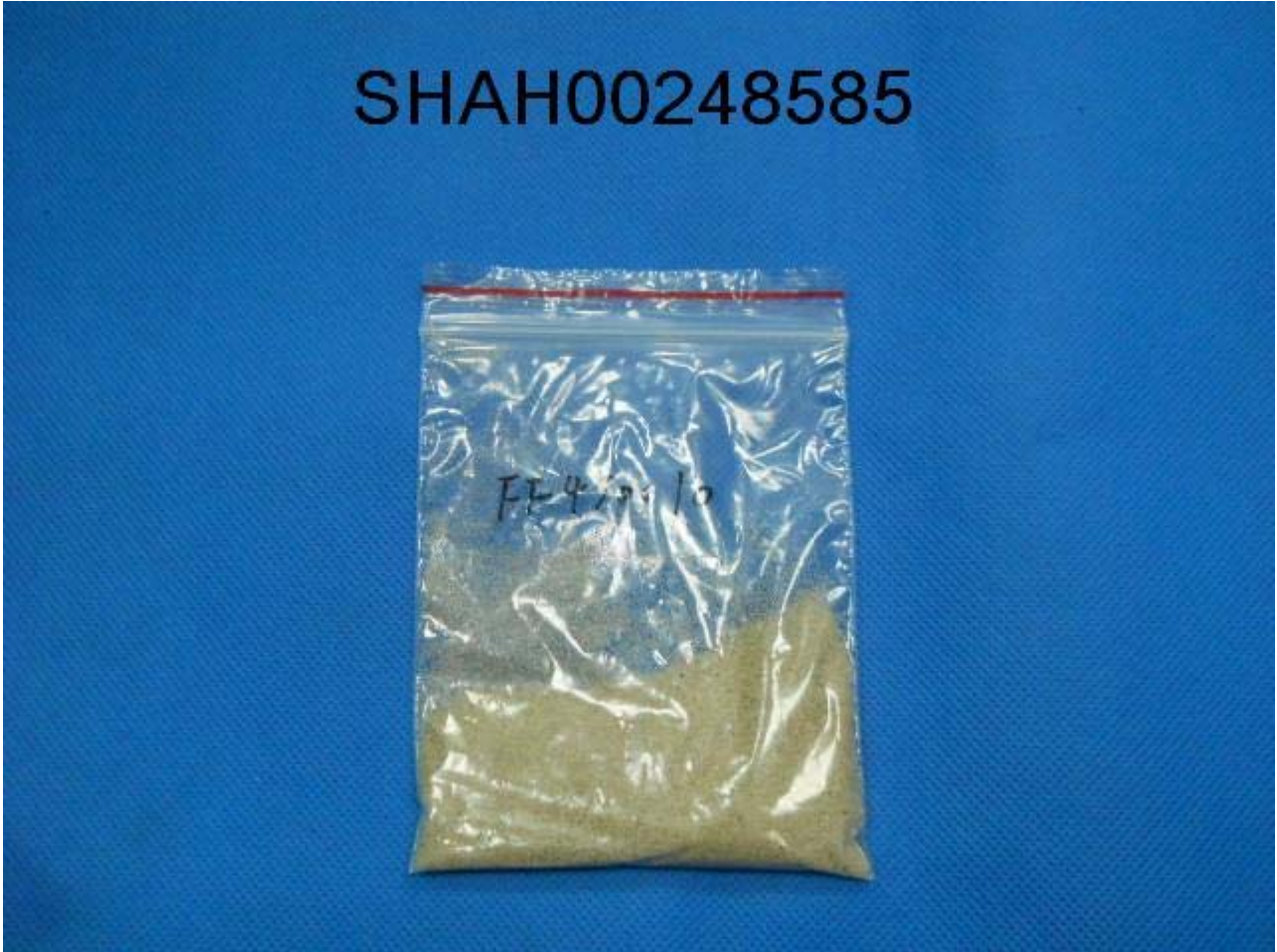
*2: IF THE RESULT OF SPOT TEST IS POSITIVE, CHROMIUM VI WOULD BE DETERMINED AS DETECTED.

TO BE CONTINUED

TEST REPORT

NUMBER: SHAH00248585

TESTS CONDUCTED



END OF REPORT



Test Report

No.: GZ1011134561/CHEM

Date: NOV 29, 2010

Page 1 of 9

I-SHENG MFG (SONGGANG) FACTORY
TANGXIAYONG ROAD SONGGANG TOWN BAOAN AREA SHENZHEN CITY CHINA

The following sample(s) was/were submitted and identified on behalf of the applicant as
PVC WIRE (INSULATION) GREEN

SGS Job No. : SZ12843210
SGS Internal Reference No. : 22.12
Tested sample information : PVC WIRE (INSULATION) GREEN
Client Reference Information : SEE ATTACHMENT
Date of Sample Received : NOV 24, 2010
Testing Period : NOV 24, 2010 TO NOV 29, 2010

Test Requested : Selected test (s) as requested by client.

Test Method : Please refer to next page(s).

Test Result(s) : Please refer to next page(s).

Signed for and on behalf of
SGS-CSTC Ltd.

Manson Yang
Approved Signatory

This document is issued by the Company subject to its General Conditions of Service printed overleaf, available on request or accessible at http://www.sgs.com/terms_and_conditions.htm and for electronic format documents subject to Terms and Conditions for Electronic Documents at www.sgs.com/terms_and_conditions.htm. Attention is drawn to the limitation of liability, jurisdiction and arbitration issues defined therein. Any holder of this document is advised that information contained herein reflects the Company's findings at the time of its inspection only and within the limits of Client's instructions, if any. The Company's sole responsibility is to its Client and this document does not constitute parties to a transaction nor exercising all their rights and obligations under the transaction documents. This document cannot be reproduced except in full without prior written approval of the Company. Any unauthorized alteration, forgery or falsification of the content or appearance of this document is unlawful and offenders may be prosecuted to the fullest extent of the law. Unless otherwise stated the results shown in this test report refer only to the samples tested.





Test Report

No.: GZ1011134561/CHEM

Date: NOV 29, 2010

Page 2 of 9

Test Results:

Description for specimen 1 : Green plastic (jacket)

Elementary Analysis

Test Item(s)	Unit	Test Method (Reference)	Result	MDL
Cadmium (Cd)	mg/kg	IEC 62321: 2008, ICP-OES	N.D.	2
Lead (Pb)	mg/kg	IEC 62321: 2008, ICP-OES	4	2
Mercury (Hg)	mg/kg	IEC 62321: 2008, ICP-OES	N.D.	2
Hexavalent Chromium (CrVI) by alkaline extraction	mg/kg	IEC 62321: 2008, UV-Vis	N.D.	2

Note:

1. mg/kg = ppm
2. N.D. = Not Detected (< MDL)
3. MDL = Method Detection Limit

Flame Retardants

Test Item(s)	Unit	Test Method (Reference)	Result	MDL
Sum of PBBs	mg/kg	-	N.D.	-
Monobromobiphenyl	mg/kg	IEC 62321: 2008, GC-MS	N.D.	5
Dibromobiphenyl	mg/kg	IEC 62321: 2008, GC-MS	N.D.	5
Tribromobiphenyl	mg/kg	IEC 62321: 2008, GC-MS	N.D.	5
Tetrabromobiphenyl	mg/kg	IEC 62321: 2008, GC-MS	N.D.	5
Pentabromobiphenyl	mg/kg	IEC 62321: 2008, GC-MS	N.D.	5
Hexabromobiphenyl	mg/kg	IEC 62321: 2008, GC-MS	N.D.	5
Heptabromobiphenyl	mg/kg	IEC 62321: 2008, GC-MS	N.D.	5
Octabromobiphenyl	mg/kg	IEC 62321: 2008, GC-MS	N.D.	5
Nonabromobiphenyl	mg/kg	IEC 62321: 2008, GC-MS	N.D.	5
Decabromobiphenyl	mg/kg	IEC 62321: 2008, GC-MS	N.D.	5
Sum of PBDEs	mg/kg	-	N.D.	-
Monobromodiphenyl ether	mg/kg	IEC 62321: 2008, GC-MS	N.D.	5
Dibromodiphenyl ether	mg/kg	IEC 62321: 2008, GC-MS	N.D.	5
Tribromodiphenyl ether	mg/kg	IEC 62321: 2008, GC-MS	N.D.	5
Tetrabromodiphenyl ether	mg/kg	IEC 62321: 2008, GC-MS	N.D.	5
Pentabromodiphenyl ether	mg/kg	IEC 62321: 2008, GC-MS	N.D.	5
Hexabromodiphenyl ether	mg/kg	IEC 62321: 2008, GC-MS	N.D.	5
Heptabromodiphenyl ether	mg/kg	IEC 62321: 2008, GC-MS	N.D.	5
Octabromodiphenyl ether	mg/kg	IEC 62321: 2008, GC-MS	N.D.	5
Nonabromodiphenyl ether	mg/kg	IEC 62321: 2008, GC-MS	N.D.	5
Decabromodiphenyl ether	mg/kg	IEC 62321: 2008, GC-MS	N.D.	5

Note:

1. mg/kg = ppm
2. N.D. = Not Detected (< MDL)
3. MDL = Method Detection Limit
4. "-" = Not regulated

This document is issued by the Company subject to its General Conditions of Service printed elsewhere, available on request or accessible at http://www.sgs.com/terms_and_conditions.htm and for electronic format documents subject to Terms and Conditions for Electronic Documents at www.sgs.com/terms_e-document.htm. Attention is drawn to the limitation of liability, exclusion and jurisdiction issues defined therein. Any holder of this document is advised that information contained herein reflects the Company's findings at the time of testing within the limits of Client's instructions. If any. The Company's sole responsibility is to its Client and this document does not exonerate parties to a transaction from exercising all their rights and obligations under the transaction documents. This document cannot be reproduced except in full without prior written approval of the Company. Any unauthorized alteration, forgery or falsification of the content or appearance of this document is unlawful and offenders may be prosecuted to the fullest extent of the law. Unless otherwise stated, the results shown in this test report refer only to the sample(s) tested.





Test Report

No.: GZ1011134561/CHEM

Date: NOV 29, 2010

Page 3 of 9

PAHs (Polynuclear Aromatic Hydrocarbons)

Test Item(s)	Unit	Test Method	Results	MDL
Naphthalene (NAP)	mg/kg	ZEK 01.2-08, GC-MS	N.D.	0.2
Acenaphthylene (ANY)	mg/kg	ZEK 01.2-08, GC-MS	N.D.	0.2
Acenaphthene (ANA)	mg/kg	ZEK 01.2-08, GC-MS	N.D.	0.2
Fluorene (FLU)	mg/kg	ZEK 01.2-08, GC-MS	N.D.	0.2
Phenanthrene (PHE)	mg/kg	ZEK 01.2-08, GC-MS	N.D.	0.2
Anthracene (ANT)	mg/kg	ZEK 01.2-08, GC-MS	N.D.	0.2
Fluoranthene (FLT)	mg/kg	ZEK 01.2-08, GC-MS	N.D.	0.2
Pyrene (PYR)	mg/kg	ZEK 01.2-08, GC-MS	N.D.	0.2
Benzo(a)anthracene (BaA)	mg/kg	ZEK 01.2-08, GC-MS	N.D.	0.2
Chrysene (CHR)	mg/kg	ZEK 01.2-08, GC-MS	N.D.	0.2
Benzo(b)fluoranthene (BbF)	mg/kg	ZEK 01.2-08, GC-MS	N.D.	0.2
Benzo(k)fluoranthene (BkF)	mg/kg	ZEK 01.2-08, GC-MS	N.D.	0.2
Benzo(a)pyrene (BaP)	mg/kg	ZEK 01.2-08, GC-MS	N.D.	0.2
Indeno(1-,2-,3-c,d)pyrene (IPY)	mg/kg	ZEK 01.2-08, GC-MS	N.D.	0.2
Dibenzo(a,h)anthracene (DBA)	mg/kg	ZEK 01.2-08, GC-MS	N.D.	0.2
Benzo(g,h,i)perylene (BPE)	mg/kg	ZEK 01.2-08, GC-MS	N.D.	0.2
Sum of 16 PAHs acc. US EPA	mg/kg	-	N.D.	-

Note:

- 1. mg/kg = ppm
- 2. N.D. = Not Detected (< MDL)
- 3. MDL = Method Detection Limit

ZEK 01.2-08 : Restraining maximum values for products

Parameter	Category 1	Category 2	Category 3
	Material intended to be put in the mouth or material for toys with normal skin contact for children aged < 36 months	Materials those are not included in Category 1, with predictable contact with the skin longer than 30 s. (long-term skin contact).	Materials those are not included in Category 1 or 2, with predictable skin contact up to 30 s. (short-term skin contact).
Benzo[a]pyrene (mg/kg)	<MDL (<0.2)***	1	20
Sum of 16 PAH (US EPA) (mg/kg)**	<MDL (<0.2)***	10	200

Remark:

** = Only PAH substances >0.2 mg/kg are taken into account while calculating the sum of PAHs

*** = In case that the maximum values exceed the limits of category 1, but are within the limits of category 2, one may confirm the suitability of the tested material which intended to be put in the mouth by additional specific migration tests of PAH components based on DIN EN 1186ff and §64 LFGB 80.30-1. The conclusion of the migration test results must be made based on food law criteria.

This document is issued by the Company subject to its General Conditions of Service printed overleaf, available on request or accessible at http://www.sgs.com/terms_and_conditions.htm and for electronic format documents, subject to Terms and Conditions for Electronic Documents at www.sgs.com/terms_e-document.htm. Attention is drawn to the limitation of liability, exclusion of warranty and jurisdiction issues defined therein. Any holder of this document is advised that information contained herein reflects the Company's findings at the time of its issue, within the limits of Client's instructions, if any. The Company's sole responsibility is to its Client and this document does not exonerate parties to a transaction from exercising all their rights and obligations under the transaction documents. This document cannot be reproduced except in full, without prior written approval of the Company. Any unauthorized alteration, forgery or falsification of the content or appearance of this document is unlawful and offenders may be prosecuted to the fullest extent of the law.

SGS
Société Générale de Surveillance S.A.
CH-1211 Geneva, Switzerland



Test Report

No.: GZ1011134561/CHEM

Date: NOV 29, 2010

Page 4 of 9

PFOA & PFOS (Perfluorooctanoic acid & Perfluorooctane sulfonates)

Test Item(s)	Unit	Test Method (Reference)	Result	MDL
Perfluorooctanoic acid (PFOA)	mg/kg	EPA 3550C: 2007, LC-MS	N.D.	10
Perfluorooctane sulfonates (PFOS)				
PFOS – Acid	mg/kg	EPA 3550C: 2007, LC-MS	N.D.	10
PFOS – Metal Salt				
PFOS – Amide				

Note:

1. mg/kg = ppm
2. N.D. = Not Detected (< MDL)
3. MDL = Method Detection Limit

For reference: Entry 53 of Regulation (EC) No 552/2009 amending Annex XVII of REACH Regulation (EC) No 1907/2006 (previously restricted under Directive 2006/122/EC):

- (1) May not be placed on the market or used as a substance or constituent of preparations in a concentration equal to or higher than 0,005 % by mass.
- (2) May not be placed on the market in semi-finished products or articles, or parts thereof, if the concentration of PFOS is equal to or higher than 0,1% by mass calculated with reference to the mass of structurally or microstructurally distinct parts that contain PFOS or, for textiles or other coated materials, if the amount of PFOS is equal to or higher than 1 µg /m² of the coated material.

This document is issued by the Company subject to its General Conditions of Service printed overleaf, available on request or accessible at http://www.sgs.com/terms_and_conditions.htm and for electronic format documents, subject to Terms and Conditions for Electronic Documents at www.sgs.com/terms_e_documents.htm. Attention is drawn to the limitation of liability, jurisdiction and arbitration clauses defined therein. Any holder of this document is advised that information contained herein reflects the Company's findings at the time of its production and is given within the limits of Client's instructions, if any. The Company's sole responsibility is to its Client and this document does not constitute parties to a transaction. Any exercising of their rights and obligations under the transaction documents. This document cannot be reproduced except in full, without prior written approval of the Company. Any unauthorized alteration, forgery or falsification of the content or appearance of this document is unlawful and offenders may be prosecuted to the fullest extent of the law. Results of analyses related to the results shown in this test report refer only to the sample(s) tested.





Test Report

No.: GZ1011134561/CHEM

Date: NOV 29, 2010

Page 5 of 9

ATTACHMENT

Used For :

H05	H03	SJT	SJTW	SVT	NISPT-2	NISPT-1	STW	VCTF
VCTFK	SJTO	SUTO	SJTOOW	ST	VCT	HVFF	HHVCTF	HVCTF
HVCTFK	STP-2	SPT-1	SPT-3	SVTW	RVV	VSF	VFF	HVSF
SJTOW	NISPT-W	NISPT-2W	SPT-3W	J03	SPT-1W	SPT-2W		

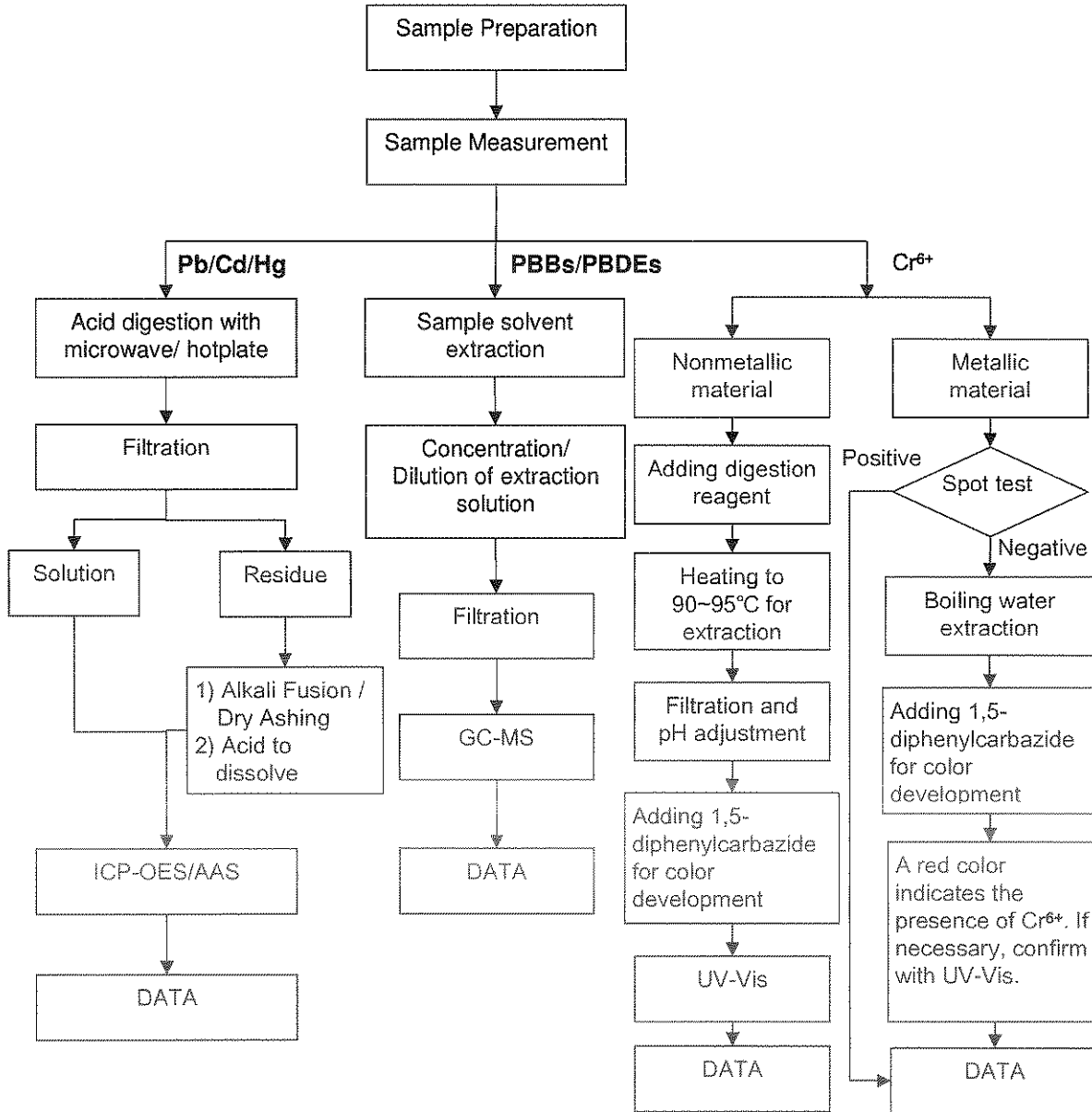
This document is issued by the Company subject to its General Conditions of Sale in printed overleaf, available on request or accessible at http://www.sgs.com/term_and_conditions.htm and for electronic format documents, subject to Terms and Conditions for Electronic Documents at www.sgs.com/terms_e-document.htm. Attention is drawn to the limitation of liability, jurisdiction and jurisdiction issues defined therein. Any holder of this document is advised that information contained hereon reflects the Company's findings at the time of its last written opinion within the limits of Client's properties, if any. The Company's sole responsibility is to its Client and this document does not generate parties to a transaction. Any alteration of this rights and obligations under the transaction documents. This document cannot be reproduced except in full, without prior written approval of the Company. Any unauthorized alteration, forgery or falsification of the content or appearance of this document is unlawful and offenders may be prosecuted to the fullest extent of the law. The results of the test are related to the results shown in the test report refer only to the samples tested.



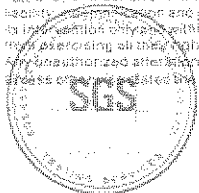
ATTACHMENTS

RoHS Testing Flow Chart

- 1) Name of the person who made testing: Bella Wang / Cutey Yu / Ross Zhan
- 2) Name of the person in charge of testing: Adams Yu / Ryan Yang
- 3) These samples were dissolved totally by pre-conditioning method according to below flow chart (Cr6+ and PBBs/PBDEs test method excluded).



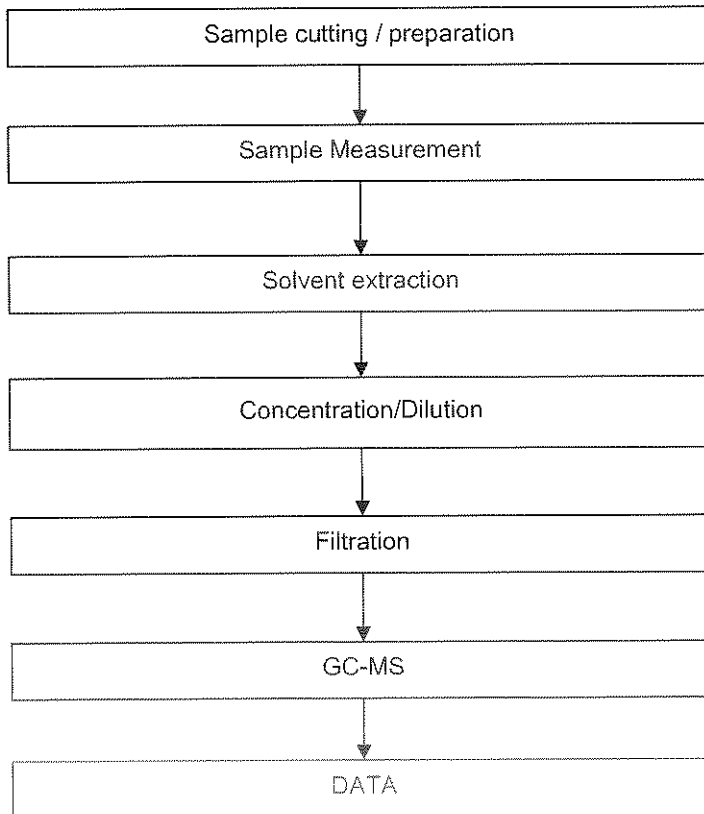
This document is issued by the Company subject to its General Conditions of Service printed overleaf, available on request or accessible at http://www.sgs.com/terms_and_conditions.htm and for electronic format documents, subject to Terms and Conditions for Electronic Documents at www.sgs.com/terms_e-document.htm. Attention is drawn to the limitation of liability, jurisdiction and arbitration clauses defined therein. Any holder of this document is advised that information contained herein reflects the Company's findings at the time of testing, within the limits of Client's Instructions, if any. The Company's sole responsibility is to its Client and this document does not constitute parties to a transaction. Any exercising of third rights and obligations under the transaction documents. This document cannot be reproduced except in full, without prior written approval of the Company. Any unauthorized alteration, forgery or falsification of the content or appearance of this document is unlawful and offenders may be prosecuted to the fullest extent of the law. The results of the related test results shown in this test report refer only to the item presented.



ATTACHMENTS

PAHs Testing Flow Chart

- 1) Name of the person who made testing: Cutey Yu
- 2) Name of the person in charge of testing: Ryan Yang



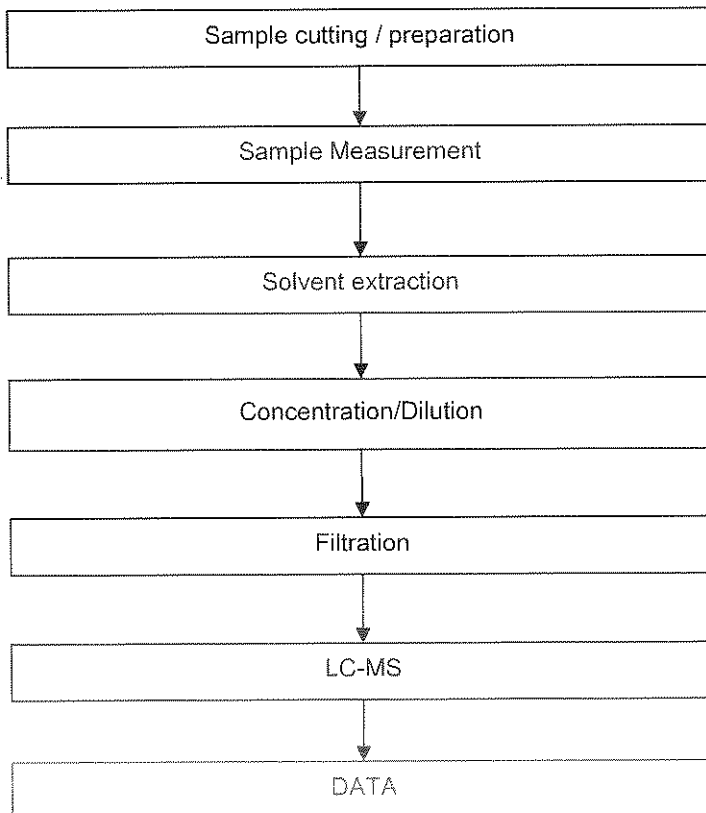
This document is issued by the Company subject to its General Conditions of Service printed hereon, available on request or accessible at http://www.sgs.com/terms_and_conditions.htm and for electronic format documents, subject to Terms and Conditions for Electronic Documents at www.sgs.com/terms_electronic.htm. Attention is drawn to the limitation of liability, which applies within the limits of SGS's insurance, if any. The Company's sole responsibility is to its Client and this document does not constitute part of a transaction or exercising all the rights and obligations under the transaction documents. This document cannot be reproduced except in full without prior written approval of the Company. Any unauthorized alteration, forgery or falsification of the content or appearance of this document is unlawful and offenders may be prosecuted to the fullest extent of the law.



ATTACHMENTS

PFOA / PFOS Testing Flow Chart

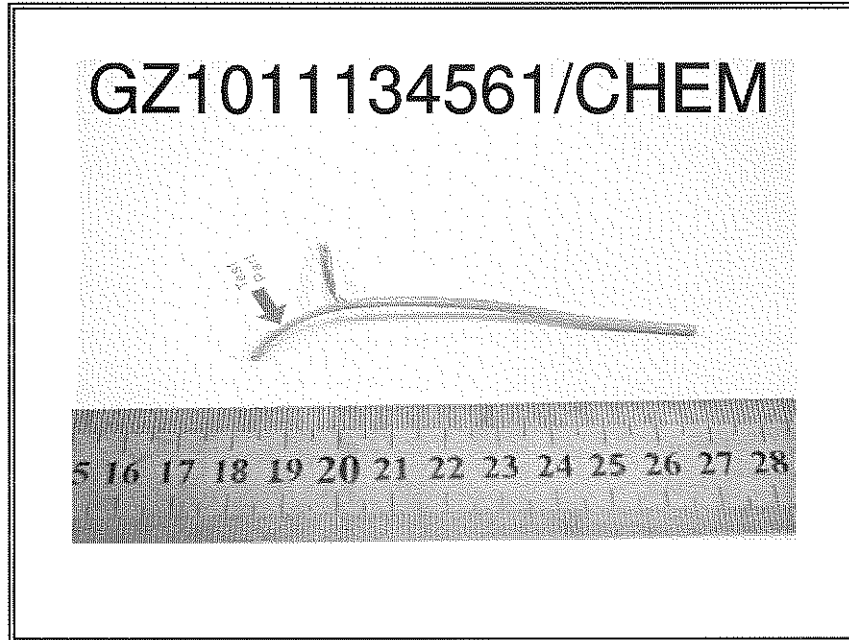
- 1) Name of the person who made testing: Cindy Huang
- 2) Name of the person in charge of testing: Ryan Yang



This document is issued by the Company subject to its General Conditions of Service printed hereon, available on request or accessible at http://www.sgs.com/terms_and_conditions.htm and for electronic format documents, subject to Terms and Conditions for Electronic Documents at www.sgs.com/terms_e-documents.htm. Attention is drawn to the limitation of liability, certification obligations and jurisdiction results defined therein. Any holder of this document is advised that information contained hereon reflects the Company's findings at the time of analysis, certification obligations within the limits of Client's instructions, if any. The Company's sole responsibility is to its Client and this document does not exonerate parties to a transaction from exercising all their rights and obligations under the transaction documents. This document cannot be reproduced except in full, without prior written approval of the Company. Any unauthorized alteration, forgery or falsification of the content or appearance of this document is unlawful and offenders may be prosecuted to the fullest extent of the law. Results are only valid for the sample(s) tested.



Sample photo :



SGS authenticate the photo on original report only

*** End of Report ***

This document is issued by the Company subject to its General Conditions of Service printed overleaf, available on request or accessible at http://www.sgs.com/terms_and_conditions.htm and for electronic format documents, subject to Terms and Conditions for Electronic Documents at www.sgs.com/terms_e-document.htm. Attention is drawn to the limitation of liability, indemnification and jurisdiction clauses defined therein. Any holder of this document is advised that information contained herein reflects the Company's findings at the time of testing, which may vary within the limits of Client's instructions, if any. The Company's sole responsibility is to its Client and this document does not exonerate parties to a transaction from exercising all their rights and obligations under the transaction documents. This document cannot be reproduced except in full without prior written approval of the Company. Any unauthorized alteration, forgery or falsification of the content or appearance of this document is unlawful and offenders may be prosecuted to the fullest extent of the law. Results of related test results shown in this test report refer only to the sample(s) tested.





Test Report

No.: GZ1011134569/CHEM

Date: NOV 29, 2010

Page 1 of 9

I-SHENG MFG (SONGGANG) FACTORY
TANGXIAYONG ROAD SONGGANG TOWN BAOAN AREA SHENZHEN CITY CHINA

The following sample(s) was/were submitted and identified on behalf of the applicant as
PVC WIRE/LAN CABLE SHEATH (BLACK)

SGS Job No. : SZ12843210
SGS Internal Reference No. : 22.20
Tested sample information : PVC WIRE/LAN CABLE SHEATH (BLACK)
Client Reference Information : SEE ATTACHMENT
Date of Sample Received : NOV 24, 2010
Testing Period : NOV 24, 2010 TO NOV 29, 2010

Test Requested : Selected test (s) as requested by client.

Test Method : Please refer to next page(s).

Test Result(s) : Please refer to next page(s).

Signed for and on behalf of
SGS-CSTC Ltd.

Manson Yang
Approved Signatory

This document is issued by the Company subject to its General Conditions of Service printed overleaf, available on request or accessible at http://www.sgs.com/terms_and_conditions.htm and for electronic format documents, subject to Terms and Conditions for Electronic Documents at www.sgs.com/terms_e-document.htm. Attention is drawn to the limitation of liability, exclusion of warranty and jurisdiction aspect defined therein. Any holder of this document is advised that information contained herein reflects the Company's findings at the time of testing and for only within the limits of Client's instructions, if any. The Company's sole responsibility is to its Client and this document does not constitute parties to a transaction or transferring all their rights and obligations under the transaction documents. This document cannot be reproduced except in full without prior written approval of the Company. Any unauthorized alteration, forgery or falsification of the content or appearance of this document is unlawful and offenders may be prosecuted to the fullest extent of the law. Tests only conducted on results shown in this test report refer only to the sample(s) tested.



100 Nguyen Arbas Street, Hai Phong, Economic & Technology Development Zone, Quang Ninh, Vietnam. China: 510663 ☎ (86-20) 82155555 | (86-20) 82075113 www.cn.sgs.com
中国·广州·经济技术开发区科学城科城路100号 邮编: 510663 ☎ (86-20) 82155555 | (86-20) 82075113 e sgs.china@sgs.com

Member of the SGS Group (SGS SA)



Test Report

No.: GZ1011134569/CHEM

Date: NOV 29, 2010

Page 2 of 9

Test Results:

Description for specimen 1 : Black plastic (jacket)

Elementary Analysis

Test Item(s)	Unit	Test Method (Reference)	Result	MDL
Cadmium (Cd)	mg/kg	IEC 62321: 2008, ICP-OES	N.D.	2
Lead (Pb)	mg/kg	IEC 62321: 2008, ICP-OES	5	2
Mercury (Hg)	mg/kg	IEC 62321: 2008, ICP-OES	N.D.	2
Hexavalent Chromium (CrVI) by alkaline extraction	mg/kg	IEC 62321: 2008, UV-Vis	N.D.	2

Note:

1. mg/kg = ppm
2. N.D. = Not Detected (< MDL)
3. MDL = Method Detection Limit

Flame Retardants

Test Item(s)	Unit	Test Method (Reference)	Result	MDL
Sum of PBBs	mg/kg	-	N.D.	-
Monobromobiphenyl	mg/kg	IEC 62321: 2008, GC-MS	N.D.	5
Dibromobiphenyl	mg/kg	IEC 62321: 2008, GC-MS	N.D.	5
Tribromobiphenyl	mg/kg	IEC 62321: 2008, GC-MS	N.D.	5
Tetrabromobiphenyl	mg/kg	IEC 62321: 2008, GC-MS	N.D.	5
Pentabromobiphenyl	mg/kg	IEC 62321: 2008, GC-MS	N.D.	5
Hexabromobiphenyl	mg/kg	IEC 62321: 2008, GC-MS	N.D.	5
Heptabromobiphenyl	mg/kg	IEC 62321: 2008, GC-MS	N.D.	5
Octabromobiphenyl	mg/kg	IEC 62321: 2008, GC-MS	N.D.	5
Nonabromobiphenyl	mg/kg	IEC 62321: 2008, GC-MS	N.D.	5
Decabromobiphenyl	mg/kg	IEC 62321: 2008, GC-MS	N.D.	5
Sum of PBDEs	mg/kg	-	N.D.	-
Monobromodiphenyl ether	mg/kg	IEC 62321: 2008, GC-MS	N.D.	5
Dibromodiphenyl ether	mg/kg	IEC 62321: 2008, GC-MS	N.D.	5
Tribromodiphenyl ether	mg/kg	IEC 62321: 2008, GC-MS	N.D.	5
Tetrabromodiphenyl ether	mg/kg	IEC 62321: 2008, GC-MS	N.D.	5
Pentabromodiphenyl ether	mg/kg	IEC 62321: 2008, GC-MS	N.D.	5
Hexabromodiphenyl ether	mg/kg	IEC 62321: 2008, GC-MS	N.D.	5
Heptabromodiphenyl ether	mg/kg	IEC 62321: 2008, GC-MS	N.D.	5
Octabromodiphenyl ether	mg/kg	IEC 62321: 2008, GC-MS	N.D.	5
Nonabromodiphenyl ether	mg/kg	IEC 62321: 2008, GC-MS	N.D.	5
Decabromodiphenyl ether	mg/kg	IEC 62321: 2008, GC-MS	N.D.	5

Note:

1. mg/kg = ppm
2. N.D. = Not Detected (< MDL)
3. MDL = Method Detection Limit
4. "-" = Not regulated

This document is issued by the Company subject to its General Conditions of Service printed overleaf, available on request or accessible at http://www.sgs.com/terms_and_conditions.htm and for electronic format documents, subject to Terms and Conditions for Electronic Documents at www.sgs.com/terms_e-documents.htm. Attention is drawn to the limitation of liability, indemnification and jurisdiction clauses set forth therein. Any holder of this document is advised that information contained herein reflects the Company's findings at the time of testing and is valid only within the limits of Client's instructions. If any. The Company's sole responsibility is to its Client and this document does not constitute parties to a transaction. Any unauthorized alteration, forgery or falsification of the content or appearance of this document is unlawful and offenders may be prosecuted to the fullest extent of the law. Results stated in this report refer only to the sample(s) tested.



100 Kiufo Road, Science Park, Guangzhou, Economic & Technology Development Zone, Guangzhou, China 510665 | (86-20) 82155555 | (86-20) 82075113 | www.cn.sgs.com
 中国·广州·经济技术开发区科学城科珠路100号 邮编: 510665 | (86-20) 82155555 | (86-20) 82075113 | sgs.china@sgs.com

Member of the SGS Group (SGS SA)



Test Report

No.: GZ1011134569/CHEM

Date: NOV 29, 2010

Page 3 of 9

PAHs (Polynuclear Aromatic Hydrocarbons)

Test Item(s)	Unit	Test Method	Results	MDL
Naphthalene (NAP)	mg/kg	ZEK 01.2-08, GC-MS	N.D.	0.2
Acenaphthylene (ANY)	mg/kg	ZEK 01.2-08, GC-MS	N.D.	0.2
Acenaphthene (ANA)	mg/kg	ZEK 01.2-08, GC-MS	N.D.	0.2
Fluorene (FLU)	mg/kg	ZEK 01.2-08, GC-MS	N.D.	0.2
Phenanthrene (PHE)	mg/kg	ZEK 01.2-08, GC-MS	N.D.	0.2
Anthracene (ANT)	mg/kg	ZEK 01.2-08, GC-MS	N.D.	0.2
Fluoranthene (FLT)	mg/kg	ZEK 01.2-08, GC-MS	N.D.	0.2
Pyrene (PYR)	mg/kg	ZEK 01.2-08, GC-MS	N.D.	0.2
Benzo(a)anthracene (BaA)	mg/kg	ZEK 01.2-08, GC-MS	N.D.	0.2
Chrysene (CHR)	mg/kg	ZEK 01.2-08, GC-MS	N.D.	0.2
Benzo(b)fluoranthene (BbF)	mg/kg	ZEK 01.2-08, GC-MS	N.D.	0.2
Benzo(k)fluoranthene (BkF)	mg/kg	ZEK 01.2-08, GC-MS	N.D.	0.2
Benzo(a)pyrene (BaP)	mg/kg	ZEK 01.2-08, GC-MS	N.D.	0.2
Indeno(1-,2,3-c,d)pyrene (IPY)	mg/kg	ZEK 01.2-08, GC-MS	N.D.	0.2
Dibenzo(a,h)anthracene (DBA)	mg/kg	ZEK 01.2-08, GC-MS	N.D.	0.2
Benzo(g,h,i)perylene (BPE)	mg/kg	ZEK 01.2-08, GC-MS	N.D.	0.2
Sum of 16 PAHs acc. US EPA	mg/kg	-	N.D.	-

Note:

1. mg/kg = ppm
2. N.D. = Not Detected (< MDL)
3. MDL = Method Detection Limit

ZEK 01.2-08 : Restraining maximum values for products

Parameter	Category 1	Category 2	Category 3
	Material indented to be put in the mouth or material for toys with normal skin contact for children aged < 36 months	Materials those are not included in Category 1, with predictable contact with the skin longer than 30 s. (long-term skin contact).	Materials those are not included in Category 1 or 2, with predictable skin contact up to 30 s (short-term skin contact).
Benzo[a]pyrene (mg/kg)	<MDL (<0.2)***	1	20
Sum of 16 PAH (US EPA) (mg/kg)**	<MDL (<0.2)***	10	200

Remark:

**= Only PAH substances >0.2 mg/kg are taken into account while calculating the sum of PAHs

*** = In case that the maximum values exceed the limits of category 1, but are within the limits of category 2, one may confirm the suitability of the tested material which indented to be put in the mouth by additional specific migration tests of PAH components based on DIN EN 1186ff and §64 LFGB 80.30-1. The conclusion of the migration test results must be made based on food law criteria.

This document is issued by the Company subject to its General Conditions of Service printed overleaf, available on request or accessible at http://www.sgs.com/terms_and_conditions.htm and for electronic format documents, subject to Terms and Conditions for Electronic Documents at www.sgs.com/terms_e_documents.htm. Attention is drawn to the limitation of liability, responsibility and jurisdiction issues defined therein. Any holder of this document is advised that information contained herein reflects the Company's findings at the time of its report and is valid within the limits of Client's instructions, if any. The Company's sole responsibility is to its Client and this document does not constitute parties to a transaction or acknowledging all their rights and obligations under the transaction documents. This document cannot be reproduced except in full, without prior written approval of the Company. Any unauthorized alteration, forgery or falsification of the content or appearance of this document is unlawful and offenders may be prosecuted to the fullest extent of the law. Unless otherwise stated, the results shown in this test report refer only to the sample(s) tested.





Test Report

No.: GZ1011134569/CHEM

Date: NOV 29, 2010

Page 4 of 9

PFOA & PFOS (Perfluorooctanoic acid & Perfluorooctane sulfonates)

Test Item(s)	Unit	Test Method (Reference)	Result	MDL
Perfluorooctanoic acid (PFOA)	mg/kg	EPA 3550C: 2007, LC-MS	N.D.	10
Perfluorooctane sulfonates (PFOS)				
PFOS – Acid	mg/kg	EPA 3550C: 2007, LC-MS	N.D.	10
PFOS – Metal Salt				
PFOS – Amide				

Note:

1. mg/kg = ppm
2. N.D. = Not Detected (< MDL)
3. MDL = Method Detection Limit

For reference: Entry 53 of Regulation (EC) No 552/2009 amending Annex XVII of REACH Regulation (EC) No 1907/2006 (previously restricted under Directive 2006/122/EC):

- (1) May not be placed on the market or used as a substance or constituent of preparations in a concentration equal to or higher than 0,005 % by mass.
- (2) May not be placed on the market in semi-finished products or articles, or parts thereof, if the concentration of PFOS is equal to or higher than 0,1% by mass calculated with reference to the mass of structurally or microstructurally distinct parts that contain PFOS or, for textiles or other coated materials, if the amount of PFOS is equal to or higher than 1 µg /m² of the coated material.

This document is issued by the Company, subject to its General Conditions of Service printed overleaf, available on request or accessible at http://www.sgs.com/terms_and_conditions.htm and for electronic format documents subject to Terms and Conditions for Electronic Documents at www.sgs.com/terms_e-document.htm. Attention is drawn to the limitation of liability, exclusion of warranty and jurisdiction issues defined therein. Any holder of this document is advised that information contained herein reflects the Company's findings at the time of testing within the limits of Client's instructions, if any. The Company's sole responsibility is to its Client and this document does not constitute parties to a transaction nor exercising all their rights and obligations under the transaction documents. This document cannot be reproduced except in full without prior written approval of the Company. Any unauthorized alteration, forgery or falsification of the content or appearance of this document is unlawful and offenders may be prosecuted to the fullest extent of the law. Unless otherwise stated the results shown in this test report refer only to the sample(s) tested.



188 Xinyuan Road, Suzhou Park, Guangzhou Economic & Technology Development Zone, Guangzhou, China 510663 | (86-20) 82158888 | (86-20) 82075113 | www.cn.sgs.com
 中国 - 广州 - 经济技术开发区科学城珠江东路98号 | 邮编: 510663 | (86-20) 82158888 | (86-20) 82075113 | sgl.china@sgs.com

Member of the SGS Group (SGS SA)



Test Report

No.: GZ1011134569/CHEM

Date: NOV 29, 2010

Page 5 of 9

ATTACHMENT

Used For :

H05	H03	SJT	SJTW	SVT	NISPT-2	NISPT-1	STW	VCTF
VCTFK	SJTO	SUTO	SJTOOW	ST	VCT	HVFF	HHVCTF	HVCTF
HVCTFK	STP-2	SPT-1	SPT-3	SVTW	RVV	VSF	VFF	HVSF
SJTOW	NISPT-W	NISPT-2W	SPT-3W	J03	SPT-1W	SPT-2W	XTW	

This document is issued by the Company subject to its General Conditions of Service printed overleaf, available on request or accessible at http://www.sgs.com/terms_and_conditions.htm, and for electronic format documents subject to Terms and Conditions for Electronic Documents at www.sgs.com/terms_electronic.htm. Attention is drawn to the limitation of liability, disclaimer and jurisdiction issues defined therein. Any holder of this document is advised that information contained herein reflects the Company's findings at the time of testing, within the limits of Client's instructions, if any. The Company's sole responsibility is to its Client and this document does not constitute parties to a transaction. Any unauthorized alteration, forgery or falsification of the content or appearance of this document is unlawful and offenders may be prosecuted to the fullest extent of the law. Results of tests related to results shown in this test report refer only to the samples tested.



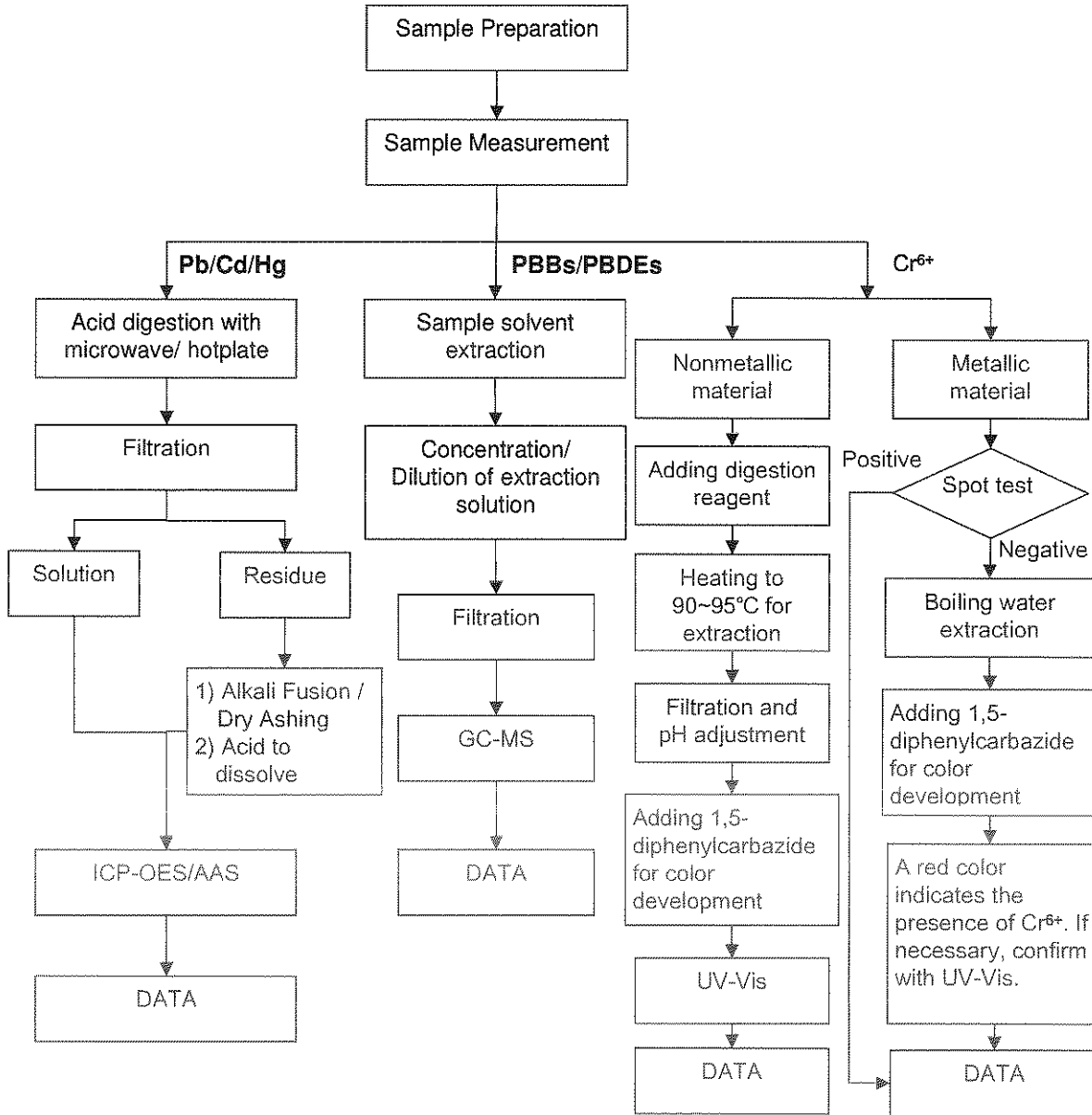
188 Xinhui Road, Shenzhen First Guangzhou Economic & Technology Development Zone, Guangzhou, China 510553 | (86-20) 82158335 | (86-20) 82075113 | www.cn.sgs.com
 中国 - 广州 - 经济技术开发区科学城科珠路188号 | 邮编: 510553 | (86-20) 82158335 | (86-20) 82075113 | sgs.china@sgs.com

Member of the SGS Group (SGS SA)

ATTACHMENTS

RoHS Testing Flow Chart

- 1) Name of the person who made testing: Bella Wang / Cutey Yu / Ross Zhan
- 2) Name of the person in charge of testing: Adams Yu / Ryan Yang
- 3) These samples were dissolved totally by pre-conditioning method according to below flow chart (Cr6+ and PBBs/PBDEs test method excluded).



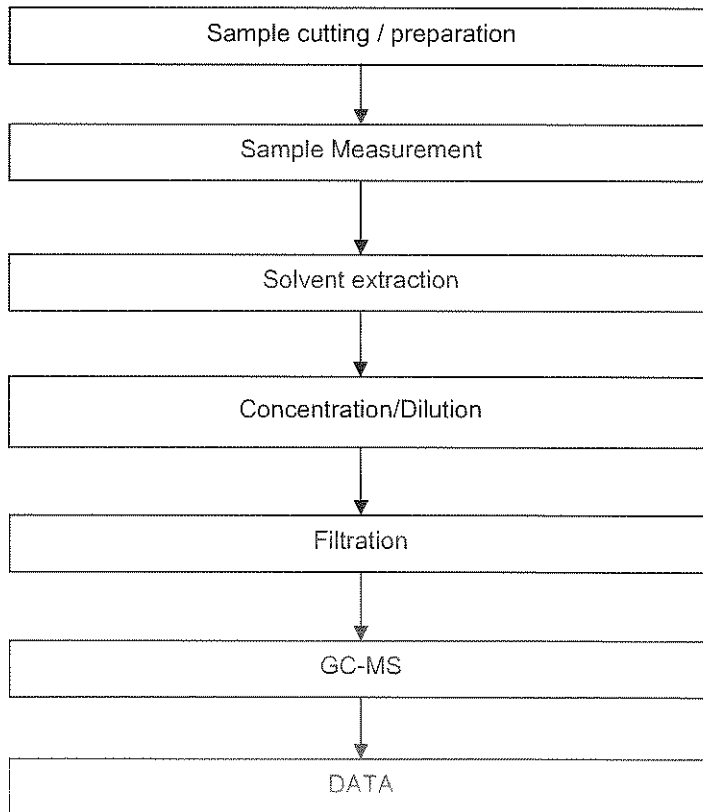
This document is issued by the Company subject to its General Conditions of Service printed overleaf, available on request or accessible on http://www.sgs.com/terms_and_conditions.htm and for electronic format documents subject to Terms and Conditions for Electronic Documents at www.sgs.com/terms_e-document.htm. Attention is drawn to the limitation of liability, jurisdiction and arbitration clause defined therein. Any holder of this document is advised that information contained herein reflects the Company's findings at the time of its execution only and within the limits of Client's instructions. It also: The Company's sole responsibility is to its Client and this document does not generate parties to a transaction or alter in any way the rights and obligations under the transaction documents. This document cannot be reproduced except in full without prior written approval of the Company. Any unauthorized alteration, forgery or falsification of the content or appearance of this document is unlawful and offenders may be prosecuted to the fullest extent of the law. All results shown in this test report refer only to the samples tested.



ATTACHMENTS

PAHs Testing Flow Chart

- 1) Name of the person who made testing: Cutey Yu
- 2) Name of the person in charge of testing: Ryan Yang



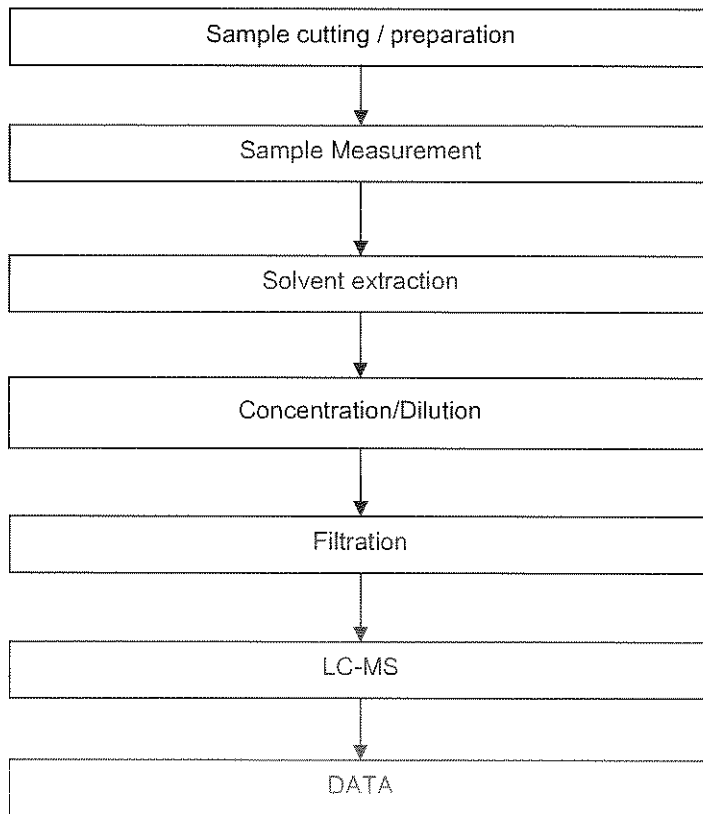
This document is issued by the Company, subject to its General Conditions of Service printed overleaf, available on request or accessible at http://www.sgs.com/terms_and_conditions.htm and/or electronic format documents, subject to Terms and Conditions for Electronic Documents at www.sgs.com/terms_e-documents.htm. Attention is drawn to the limitation of scope, jurisdiction and jurisdiction issues defined therein. Any holder of this document is advised that information contained herein reflects the Company's findings at the time of its verification only, within the limits of Client's instructions, if any. The Company's sole responsibility is to its Client and this document does not constitute a contract. Any unauthorized alteration, forgery or falsification of the content or appearance of this document is unlawful and offenders may be prosecuted to the fullest extent of the law. The results of the analysis are valid for the period stated in this test report and refer only to the sample(s) tested.



ATTACHMENTS

PFOA / PFOS Testing Flow Chart

- 1) Name of the person who made testing: Cindy Huang
- 2) Name of the person in charge of testing: Ryan Yang

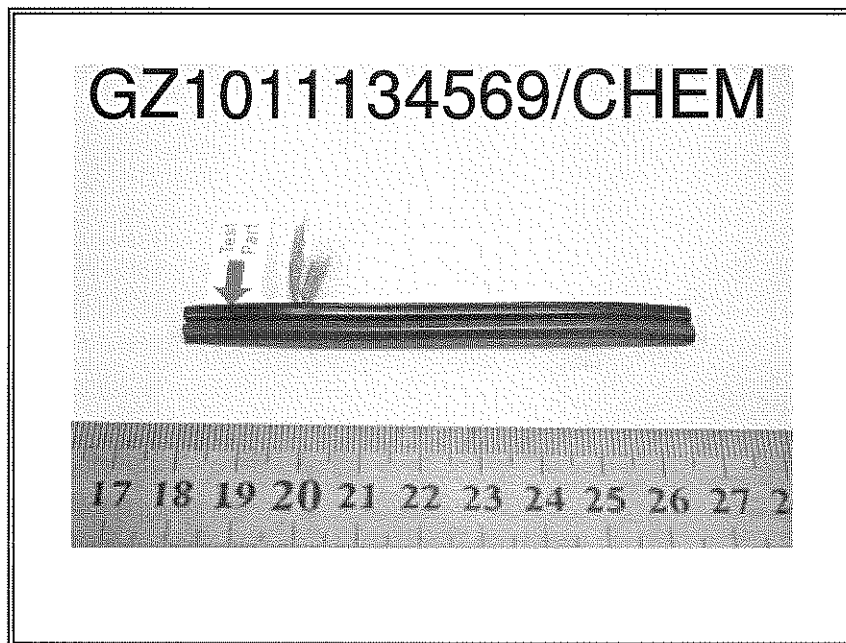


This document is issued by the Company, subject to its General Conditions of Sale in a printed version, available on request or accessible at http://www.sgs.com/terms_and_conditions.htm and for electronic format documents, subject to Terms and Conditions for Electronic Documents at www.sgs.com/terms_e-documents.htm. Attention is drawn to the limitation of liability, of design and production issues defined therein. Any holder of this document is advised that information contained herein reflects the Company's findings, at the time of its test, under the conditions within the limits of Client's instructions. If any. The Company's sole responsibility is to its Client and this document does not exonerate parties to a transaction from exercising all their rights and obligations under the transaction documents. This document cannot be reproduced except in full without prior written approval of the Company. Any unauthorized alteration, forgery or falsification of the content or appearance of this document is unlawful and offenders may be prosecuted to the fullest extent of the law.

Results stated in this test report refer only to the sample(s) tested.



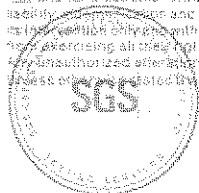
Sample photo :



SGS authenticate the photo on original report only

*** End of Report ***

This document is issued by the Company's subject to its General Conditions of Service printed overleaf, available on request or accessible at http://www.sgs.com/terms_and_conditions.htm and for electronic format documents, subject to Terms and Conditions for Electronic Documents at www.sgs.com/terms_e-documents.htm. Attention is drawn to the limitation of liability, jurisdiction and jurisdiction clause defined therein. Any holder of this document is advised that information contained herein reflects the Company's findings at the time of its verification only and within the limits of Client's instructions. If any. The Company's sole responsibility is to its Client and this document does not constitute parties to a transaction. Any unauthorized alteration, forgery or falsification of the content or appearance of this document is unlawful and offenders may be prosecuted to the fullest extent of the law. The test results are stated in the results sheet in this test report refer only to the sample(s) tested.



Test Report

Report No. RLSZD000969410001

Page 1 of 6

Applicant PURE FRIEND ENTERPRISE CO. DONG GUAN CHANGAN JIEKOU YIXIN PLASTICS FACTORY

Address JIEKOU CHANGAN INDUSTRY DISTRICT, DONG GUAN CITY, GUANDONG

Report on the submitted sample(s) said to be

Sample Name PVC GRAIN

Sample Description Black solid grains

Color BLACK

Sample Received Date Jul. 12, 2011

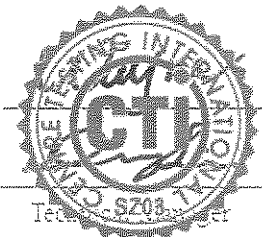
Testing Period Jul. 12, 2011 to Jul. 15, 2011

Test Requested As specified by client, to determine the Hexabromocyclododecane(HBCDD), Three Phthalates (DBP, BBP, DEHP), Lead(Pb), Cadmium(Cd), Mercury(Hg), Hexavalent Chromium(Cr(VI)), Polybrominated Biphenyls(PBBs), Polybrominated Diphenyl Ethers(PBDEs) content in the submitted sample.

Test Method Please refer to the following page(s).

Test Result(s) Please refer to the following page(s).

Tested by



Approved by

Inspected by

Vargas

Date

Jul. 15, 2011

No. 11367030

Test Report

Report No. RLSZD000969410001

Page 2 of 6

Test Method

Test Item(s)	Test Method	Measured Equipment(s)	MDL
Hexabromocyclododecane(HBCDD)	Refer to US EPA 3540C:1996	GC-MS	5 mg/kg
Lead(Pb)	IEC 62321:2008 Ed.1 Sec.8	ICP-OES	2 mg/kg
Cadmium(Cd)	IEC 62321:2008 Ed.1 Sec.8	ICP-OES	2 mg/kg
Mercury(Hg)	IEC 62321:2008 Ed.1 Sec.7	ICP-OES	2 mg/kg
Hexavalent Chromium(Cr(VI))	IEC 62321:2008 Ed.1 Annex C	UV-Vis	2 mg/kg
Three Phthalates (DBP,BBP,DEHP)	Refer to EN 14372:2004	GC-MS	50 mg/kg
Polybrominated Biphenyls(PBBs)	IEC 62321:2008 Ed.1 Annex A	GC-MS	5 mg/kg
Polybrominated Diphenyl Ethers(PBDEs)	IEC 62321:2008 Ed.1 Annex A	GC-MS	5 mg/kg

Test Result(s)

Tested Item(s)	Content
Lead(Pb)	N.D.
Hexabromocyclododecane (HBCDD)	N.D.
Cadmium (Cd)	N.D.
Mercury(Hg)	N.D.
Hexavalent Chromium(Cr(VI))	N.D.

Tested Item(s)	Content
Polybrominated Biphenyls(PBBs)	
Monobromobiphenyl	N.D.
Dibromobiphenyl	N.D.
Tribromobiphenyl	N.D.
Tetrabromobiphenyl	N.D.
Pentabromobiphenyl	N.D.
Hexabromobiphenyl	N.D.
Heptabromobiphenyl	N.D.
Octabromobiphenyl	N.D.
Nonabromobiphenyl	N.D.
Decabromobiphenyl	N.D.

Test Report

Report No. RLSZD000969410001

Page 3 of 6

Tested Item(s)	Content
Polybrominated Diphenyl Ethers(PBDEs)	
Monobromodiphenyl ether	N.D.
Dibromodiphenyl ether	N.D.
Tribromodiphenyl ether	N.D.
Tetrabromodiphenyl ether	N.D.
Pentabromodiphenyl ether	N.D.
Hexabromodiphenyl ether	N.D.
Heptabromodiphenyl ether	N.D.
Octabromodiphenyl ether	N.D.
Nonabromodiphenyl ether	N.D.
Decabromodiphenyl ether	N.D.

Tested Item(s)	CAS No.	EC No.	Content
Three Phthalates			
Dibutyl phthalate(DBP)	84-74-2	201-557-4	N.D.
Benzylbutyl phthalate(BBP)	85-68-7	201-622-7	N.D.
Di-2-ethylhexyl phthalate(DEHP)	117-81-7	204-211-0	N.D.

Note: The sample had been dissolved totally tested for Lead, Cadmium, Mercury.

- MDL = Method Detection Limit
- N.D. = Not Detected (<MDL)
- mg/kg = ppm = parts per million

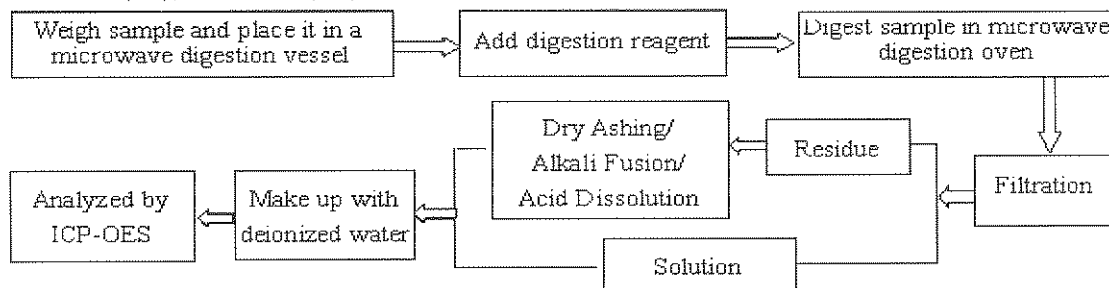
Test Report

Report No. RLSZD000969410001

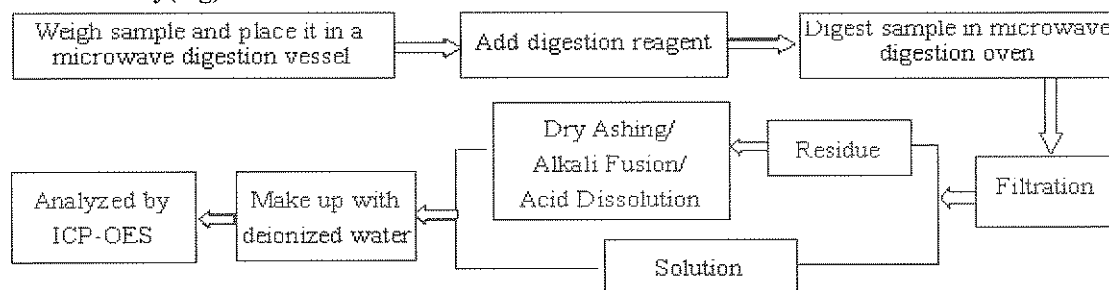
Page 4 of 6

Test Process

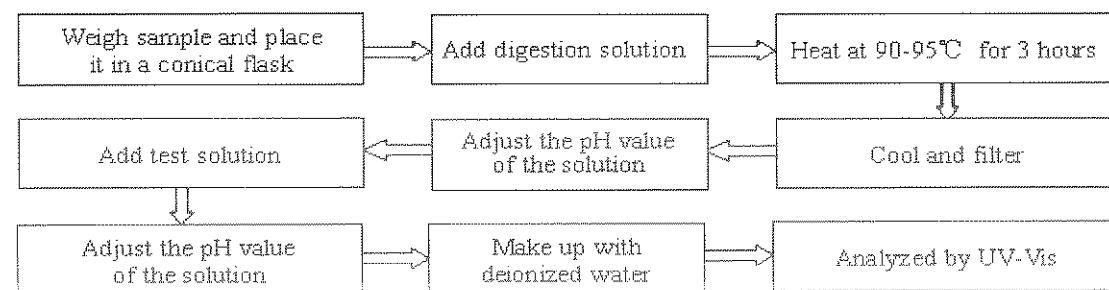
1. Lead(Pb), Cadmium(Cd)



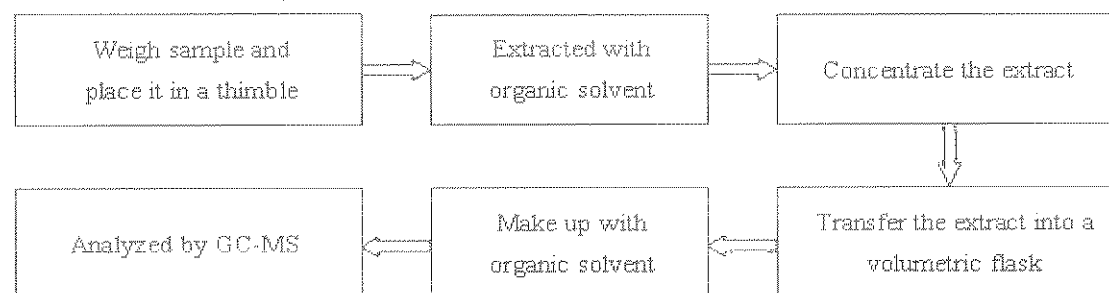
2. Mercury(Hg)



3. Hexavalent Chromium(Cr(VI))



4. Three Phthalates (DBP,BBP,DEHP)

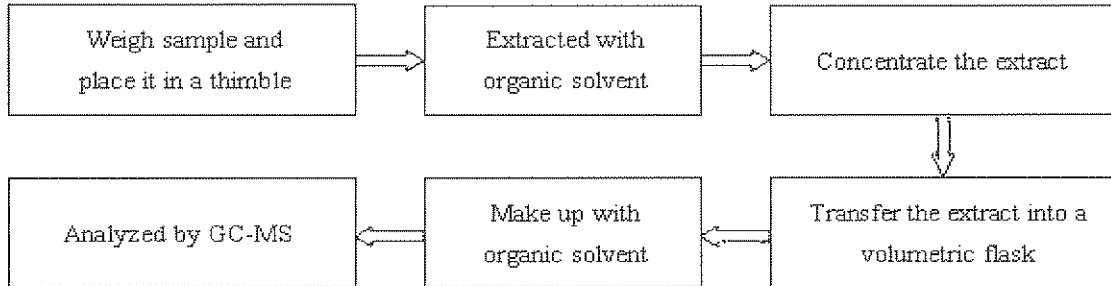


Test Report

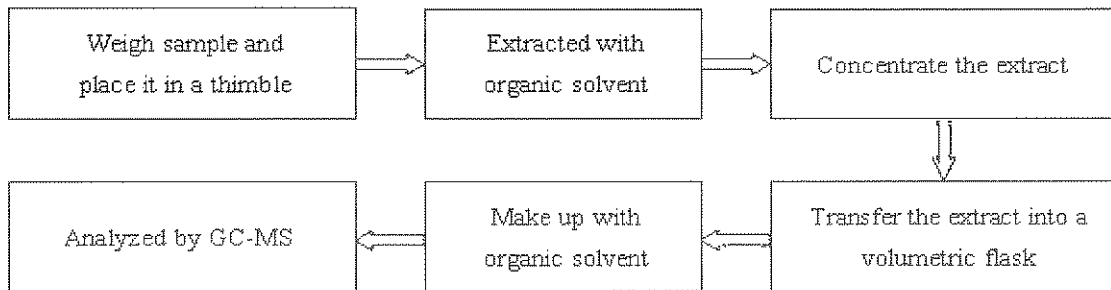
Report No. RLSZD000969410001

Page 5 of 6

5. Polybrominated Biphenyls(PBBs), Polybrominated Diphenyl Ethers(PBDEs)



6. Hexabromocyclododecane(HBCDD)



Test Report

Report No. RLSZD000969410001

Page 6 of 6

Photo(s) of the sample(s)



*** End of report ***

This report is considered invalidated without the Special Seal for Inspection of the CTI. This report shall not be altered, increased or deleted. The results shown in this test report refer only to the sample(s) tested. Without written approval of CTI, this test report shall not be copied except in full and published as advertisement.

Building C, Hongwei Industrial Zone, Baoan 70 District, Shenzhen

Test Report

No. : CE/2010/C2869 Date : 2010/12/21 Page : 1 of 19

GEM TERMINAL IND. CO., LTD.

NO. 138, LANE513, TA-TUNG ROAD, LU-CHU HSIANG KAOHSIUNG HSIEN, TAIWAN



The following sample(s) was/were submitted and identified by/on behalf of the client as:

Sample Description : PBT 4830BK
SGS Ref No. : SZ12877474-23.1
Style/Item No. : PLEASE REFER TO PAGE 8 TO 11
Sample Receiving Date : 2010/12/15
Testing Period : 2010/12/15 TO 2010/12/21

Test Result(s) : Please refer to next page(s).

Conclusion : 1. Based upon the performed tests by submitted samples, the test results of Cadmium, Lead, Mercury, Hexavalent Chromium Cr(VI), PBBs and PBDEs comply with the limits of RoHS Directive 2002/95/EC and its subsequent amendments.
2. Base upon the performed tests by submitted samples, the test results of PAHs comply with the PAHs requirement according to (Category 1) of ZEK 01.2-08 of German ZLS and its amendments.


Chenyu Kung / Operation Manager
Signed for and on behalf of
SGS TAIWAN LTD.
Chemical Laboratory – Taipei

Unless otherwise stated the results shown in this test report refer only to the sample(s) tested. This test report cannot be reproduced, except in full, without prior written permission of the Company. 除非另有說明，此報告結果僅對測試的樣品負責。本報告未經本公司書面許可，不可部份複製。
This document is issued by the Company subject to its General Conditions of Service printed overleaf, available on request or accessible at www.sgs.com/terms_and_conditions.htm and, for electronic format documents, subject to Terms and Conditions for Electronic Documents at www.sgs.com/terms_e-document.htm. Attention is drawn to the limitation of liability, indemnification and jurisdiction issues defined therein. Any holder of this document is advised that information contained hereon reflects the Company's findings at the time of its intervention only and within the limits of Client's instructions, if any. The Company's sole responsibility is to its Client and this document does not exonerate parties to a transaction from exercising all their rights and obligations under the transaction documents. This document cannot be reproduced except in full, without prior written approval of the Company. Any unauthorized alteration, forgery or falsification of the content or appearance of this document is unlawful and offenders may be prosecuted to the fullest extent of the law.

Test Report

No. : CE/2010/C2869 Date : 2010/12/21 Page : 2 of 19

GEM TERMINAL IND. CO., LTD.
NO. 138, LANE513, TA-TUNG ROAD, LU-CHU HSIANG KAOHSIUNG HSIEN, TAIWAN



Test Result(s)

PART NAME No.1 : BLACK PLASTIC PELLETS

Test Item (s):	Unit	Method	MDL	Result	Limit
				No.1	
Cadmium (Cd)	mg/kg	With reference to IEC 62321: 2008 and performed by ICP-AES.	2	n.d.	100
Lead (Pb)	mg/kg	With reference to IEC 62321: 2008 and performed by ICP-AES.	2	8	1000
Mercury (Hg)	mg/kg	With reference to IEC 62321: 2008 and performed by ICP-AES.	2	n.d.	1000
Hexavalent Chromium Cr(VI) by alkaline extraction	mg/kg	With reference to IEC 62321: 2008 and performed by UV-VIS.	2	n.d.	1000
Perfluorooctane sulfonates (PFOS) PFOS – Acid PFOS – Metal Salt PFOS – Amide	mg/kg	With reference to US EPA 3540C: 1996 method for PFOS Content. Analysis was performed by LC/MS.	10	n.d.	-
PFOA (CAS No.: 000335-67-1)	mg/kg	With reference to US EPA 3540C: 1996 method for PFOA Content. Analysis was performed by LC/MS.	10	n.d.	-
Tetrabromobisphenol A (TBBP-A) (CAS No.: 000079-94-7)	mg/kg	With reference to DIN 53313. Analysis was performed by GC/MS.	10	n.d.	-
Nonylphenol (NP) (CAS No.: 025154-52-3)	mg/kg	With reference to US EPA 3550C method. Analysis was performed by GC/MS.	10	n.d.	-
Sum of PBBs			-	n.d.	1000
Monobromobiphenyl	mg/kg	With reference to IEC 62321: 2008 and performed by GC/MS.	5	n.d.	-
Dibromobiphenyl			5	n.d.	-
Tribromobiphenyl			5	n.d.	-
Tetrabromobiphenyl			5	n.d.	-
Pentabromobiphenyl			5	n.d.	-
Hexabromobiphenyl			5	n.d.	-
Heptabromobiphenyl			5	n.d.	-
Octabromobiphenyl			5	n.d.	-
Nonabromobiphenyl			5	n.d.	-
Decabromobiphenyl			5	n.d.	-

Unless otherwise stated the results shown in this test report refer only to the sample(s) tested. This test report cannot be reproduced, except in full, without prior written permission of the Company. 除非另有說明，此報告結果僅對測試的樣品負責，本報告未經本公司書面許可，不得部份複製。
This document is issued by the Company subject to its General Conditions of Service printed overleaf, available on request or accessible at www.sgs.com/terms_and_conditions.htm and for electronic format documents, subject to Terms and Conditions for Electronic Documents at www.sgs.com/terms_e-document.htm. Attention is drawn to the limitation of liability, indemnification and jurisdiction issues defined therein. Any holder of this document is advised that information contained hereon reflects the Company's findings at the time of its intervention only and within the limits of Client's instructions, if any. The Company's sole responsibility is to its Client and this document does not exonerate parties to a transaction from exercising all their rights and obligations under the transaction documents. This document cannot be reproduced except in full, without prior written approval of the Company. Any unauthorized alteration, forgery or falsification of the content or appearance of this document is unlawful and offenders may be prosecuted to the fullest extent of the law.



Test Report

No. : CE/2010/C2869 Date : 2010/12/21 Page : 3 of 19

GEM TERMINAL IND. CO., LTD.

NO. 138, LANE513, TA-TUNG ROAD, LU-CHU HSIANG KAOHSIUNG HSIEN, TAIWAN



Test Item (s):	Unit	Method	MDL	Result	Limit		
				No.1			
Sum of PBDEs			-	n.d.	1000		
Monobromodiphenyl ether	mg/kg	With reference to IEC 62321: 2008 and performed by GC/MS.	5	n.d.	-		
Dibromodiphenyl ether			5	n.d.	-		
Tribromodiphenyl ether			5	n.d.	-		
Tetrabromodiphenyl ether			5	n.d.	-		
Pentabromodiphenyl ether			5	n.d.	-		
Hexabromodiphenyl ether			5	n.d.	-		
Heptabromodiphenyl ether			5	n.d.	-		
Octabromodiphenyl ether			5	n.d.	-		
Nonabromodiphenyl ether			5	n.d.	-		
Decabromodiphenyl ether			5	n.d.	-		
AZO							
1): 4-AMINODIPHENYL (CAS No.: 000092-67-1)			mg/kg	With reference to LFGB 82.02-2. Analysis was performed by GC/MS.	3	n.d.	-
2): BENZIDINE (CAS No.: 00092-87-5)	mg/kg	With reference to LFGB 82.02-2. Analysis was performed by GC/MS.	3	n.d.	-		
3): 4-CHLORO-O-TOLUIDINE (CAS No.: 000095-69-2)	mg/kg	With reference to LFGB 82.02-2. Analysis was performed by GC/MS.	3	n.d.	-		
4): 2-NAPHTHYLAMINE (CAS No.: 000091-59-8)	mg/kg	With reference to LFGB 82.02-2. Analysis was performed by GC/MS.	3	n.d.	-		
5): O-AMINOAZOTOLUENE (CAS No.: 000097-56-3)	mg/kg	With reference to LFGB 82.02-2. Analysis was performed by GC/MS.	3	n.d.	-		
6): 2-AMINO-4-NITROTOLUENE (CAS No.: 000099-55-8)	mg/kg	With reference to LFGB 82.02-2. Analysis was performed by GC/MS.	3	n.d.	-		
7): P-CHLOROANILINE (CAS No.: 000106-47-8)	mg/kg	With reference to LFGB 82.02-2. Analysis was performed by GC/MS.	3	n.d.	-		
8): 2,4-DIAMINOANISOLE (CAS No.: 000615-05-4)	mg/kg	With reference to LFGB 82.02-2. Analysis was performed by GC/MS.	3	n.d.	-		
9): 4,4'-DIAMINODIPHENYLMETHANE (CAS No.: 000101-77-9)	mg/kg	With reference to LFGB 82.02-2. Analysis was performed by GC/MS.	3	n.d.	-		
10): 3,3'-DICHLOROBENZIDINE (CAS No.: 000091-94-1)	mg/kg	With reference to LFGB 82.02-2. Analysis was performed by GC/MS.	3	n.d.	-		

Unless otherwise stated the results shown in this test report refer only to the sample(s) tested. This test report cannot be reproduced, except in full, without prior written permission of the Company. 除非另有說明，此報告結果僅對測試的樣品負責。本報告只與本公司有關，不可部分複製。
 This document is issued by the Company subject to its General Conditions of Service printed overleaf, available on request or accessible at www.sgs.com/terms_and_conditions.htm and, for electronic format documents, subject to Terms and Conditions for Electronic Documents at www.sgs.com/terms_e-document.htm. Attention is drawn to the limitation of liability, indemnification and jurisdiction issues defined therein. Any holder of this document is advised that information contained hereon reflects the Company's findings at the time of its intervention only and within the limits of Client's instructions, if any. The Company's sole responsibility is to its Client and this document does not exonerate parties to a transaction from exercising all their rights and obligations under the transaction documents. This document cannot be reproduced except in full, without prior written approval of the Company. Any unauthorized alteration, forgery or falsification of the content or appearance of this document is unlawful and offenders may be prosecuted to the fullest extent of the law.



Test Report

No. : CE/2010/C2869 Date : 2010/12/21 Page : 4 of 19

GEM TERMINAL IND. CO., LTD.

NO. 138, LANE513, TA-TUNG ROAD, LU-CHU HSIANG KAOHSIUNG HSIEN, TAIWAN



Test Item (s):	Unit	Method	MDL	Result	Limit
				No.1	
11): 3,3'-DIMETHOXYBENZIDINE (CAS No.: 000119-90-4)	mg/kg	With reference to LFGB 82.02-2. Analysis was performed by GC/MS.	3	n.d.	-
12): 3,3'-DIMETHYLBENZIDINE (CAS No.: 000119-93-7)	mg/kg	With reference to LFGB 82.02-2. Analysis was performed by GC/MS.	3	n.d.	-
13): 3,3'-DIMETHYL-4,4'-DIAMINODIPHENYLMETHANE (CAS No.: 000838-88-0)	mg/kg	With reference to LFGB 82.02-2. Analysis was performed by GC/MS.	3	n.d.	-
14): P-CRESIDINE (2-METHOXY-5-METHYLANILINE) (CAS No.: 000120-71-8)	mg/kg	With reference to LFGB 82.02-2. Analysis was performed by GC/MS.	3	n.d.	-
15): 4,4'-METHYLENE-BIS-(2-CHLOROANILINE) (CAS No.: 000101-14-4)	mg/kg	With reference to LFGB 82.02-2. Analysis was performed by GC/MS.	3	n.d.	-
16): 4,4'-OXYDIANILINE (CAS No.: 000101-80-4)	mg/kg	With reference to LFGB 82.02-2. Analysis was performed by GC/MS.	3	n.d.	-
17): 4,4'-THIODIANILINE (CAS No.: 000139-65-1)	mg/kg	With reference to LFGB 82.02-2. Analysis was performed by GC/MS.	3	n.d.	-
18): O-TOLUIDINE (CAS No.: 000095-53-4)	mg/kg	With reference to LFGB 82.02-2. Analysis was performed by GC/MS.	3	n.d.	-
19): 2,4-TOLUYLENEDIAMINE (CAS No.: 000095-80-7)	mg/kg	With reference to LFGB 82.02-2. Analysis was performed by GC/MS.	3	n.d.	-
20): 2,4,5-TRIMETHYLANILINE (CAS No.: 000137-17-7)	mg/kg	With reference to LFGB 82.02-2. Analysis was performed by GC/MS.	3	n.d.	-
21): O-ANISIDINE (CAS No.: 000090-04-0)	mg/kg	With reference to LFGB 82.02-2. Analysis was performed by GC/MS.	3	n.d.	-
22): P-AMINOAZOBENZENE (CAS No.: 000060-09-3)	mg/kg	With reference to LFGB 82.02-2. Analysis was performed by GC/MS.	3	n.d.	-
23): 2,4-XYLIDINE (CAS No.: 000095-68-1)	mg/kg	With reference to LFGB 82.02-2. Analysis was performed by GC/MS.	3	n.d.	-
24): 2,6-XYLIDINE (CAS No.: 000087-62-7)	mg/kg	With reference to LFGB 82.02-2. Analysis was performed by GC/MS.	3	n.d.	-

Unless otherwise stated the results shown in this test report refer only to the sample(s) tested. This test report cannot be reproduced, except in full, without prior written permission of the Company. 除非另有說明，此測試結果等測試結果僅供客戶、本報告人與本公司內部使用，不可隨意複製。

This document is issued by the Company subject to its General Conditions of Service printed overleaf, available on request or accessible at www.sgs.com/terms_and_conditions.htm and, for electronic format documents, subject to Terms and Conditions for Electronic Documents at www.sgs.com/terms_e-document.htm. Attention is drawn to the limitation of liability, indemnification and jurisdiction issues defined therein. Any holder of this document is advised that information contained hereon reflects the Company's findings at the time of its intervention only and within the limits of Client's instructions, if any. The Company's sole responsibility is to its Client and this document does not exonerate parties to a transaction from exercising all their rights and obligations under the transaction documents. This document cannot be reproduced except in full, without prior written approval of the Company. Any unauthorized alteration, forgery or falsification of the content or appearance of this document is unlawful and offenders may be prosecuted to the fullest extent of the law.



Test Report

No. : CE/2010/C2869 Date : 2010/12/21 Page : 5 of 19

GEM TERMINAL IND. CO., LTD.

NO. 138, LANE513, TA-TUNG ROAD, LU-CHU HSIANG KAOHSIUNG HSIEN, TAIWAN



Test Item (s):	Unit	Method	MDL	Result	Limit
				No.1	
Polynuclear Aromatic Hydrocarbons (PAHs)					
Acenaphthene (CAS No.: 000083-32-9)	mg/kg	With reference to ZLS standard ZEK 01.2-08 method. Analysis was performed by GC/MS.	0.2	n.d.	-
Acenaphthylene (CAS No.: 000208-96-8)			0.2	n.d.	-
Anthracene (CAS No.: 000120-12-7)			0.2	n.d.	-
Benzo[a]anthracene (CAS No.: 000056-55-3)			0.2	n.d.	-
Benzo[a]pyrene (CAS No.: 000050-32-8)			0.2	n.d.	-
Benzo[b]fluoranthene (CAS No.: 000205-99-2)			0.2	n.d.	-
Benzo[g,h,i]perylene (CAS No.: 000191-24-2)			0.2	n.d.	-
Benzo[k]fluoranthene (CAS No.: 000207-08-9)			0.2	n.d.	-
Chrysene (CAS No.: 000218-01-9)			0.2	n.d.	-
Dibenzo[a,h]anthracene (CAS No.: 000053-70-3)			0.2	n.d.	-
Fluoranthene (CAS No.: 000206-44-0)			0.2	n.d.	-
Fluorene (CAS No.: 000086-73-7)			0.2	n.d.	-
Indeno[1,2,3-c,d] pyrene (CAS No.: 000193-39-5)			0.2	n.d.	-
Naphthalene (CAS No.: 000091-20-3)			0.2	n.d.	-
Phenanthrene (CAS No.: 000085-01-8)			0.2	n.d.	-
Pyrene (CAS No.: 000129-00-0)			0.2	n.d.	-
Sum of 16 PAHs			-	n.d.	-

Unless otherwise stated the results shown in this test report refer only to the sample(s) tested. This test report cannot be reproduced, except in full, without prior written permission of the Company. 除非另有說明，此報告結果僅針對測試的樣品負責。本報告未經本公司書面許可，不可部份複製。

This document is issued by the Company subject to its General Conditions of Service printed overleaf, available on request or accessible at www.sgs.com/terms_and_conditions.htm and, for electronic format documents, subject to Terms and Conditions for Electronic Documents at www.sgs.com/terms_e-document.htm. Attention is drawn to the limitation of liability, indemnification and jurisdiction issues defined therein. Any holder of this document is advised that information contained hereon reflects the Company's findings at the time of its intervention only and within the limits of Client's instructions, if any. The Company's sole responsibility is to its Client and this document does not exonerate parties to a transaction from exercising all their rights and obligations under the transaction documents. This document cannot be reproduced except in full, without prior written approval of the Company. Any unauthorized alteration, forgery or falsification of the content or appearance of this document is unlawful and offenders may be prosecuted to the fullest extent of the law.



Test Report

No. : CE/2010/C2869 Date : 2010/12/21 Page : 6 of 19

GEM TERMINAL IND. CO., LTD.

NO. 138, LANE513, TA-TUNG ROAD, LU-CHU HSIANG KAOHSIUNG HSIEN, TAIWAN



Test Item (s):	Unit	Method	MDL	Result	Limit
				No.1	
Phthalates					
BBP (Benzyl butyl phthalate) (CAS No.: 000085-68-7)	%	With reference to EN 14372. Analysis was performed by GC/MS.	0.003	n.d.	-
DBP (Dibutyl phthalate) (CAS No.: 000084-74-2)			0.003	n.d.	-
DEHP (Di- (2-ethylhexyl) phthalate) (CAS No.: 000117-81-7)			0.003	n.d.	-
DIDP (Di-isodecyl phthalate) (CAS No.: 026761-40-0)			0.01	n.d.	-
DINP (Di-isononyl phthalate) (CAS No.: 028553-12-0)			0.01	n.d.	-
DNOP (Di-n-octyl phthalate) (CAS No.: 000117-84-0)			0.003	n.d.	-
DEHA (Di-2-ethylhexyl adipate) (DOA) (CAS No.: 000103-23-1)			0.003	n.d.	-
DIBP (Di-isobutyl phthalate) (CAS No.: 000084-69-5)			0.003	n.d.	-
DMP (Di-methyl phthalate) (CAS No.: 000131-11-3)			0.003	n.d.	-
DPrP (Di-propyl phthalate) (CAS No.: 000131-16-8)			0.003	n.d.	-
DCHP (Di-cyclohexyl phthalate) (CAS No.: 000084-61-7)			0.003	n.d.	-
DEP (Di-ethyl phthalate) (CAS No.: 000084-66-2)			0.003	n.d.	-
DIOP (Di-isooctyl phthalate) (CAS No.: 027554-26-3)			0.003	n.d.	-
DNNP (Di-n-nonyl phthalate)(DNP) (CAS No.: 000084-76-4)			0.003	n.d.	-
DPP (Di-pentyl phthalate) (CAS No.: 000131-18-0)			0.003	n.d.	-
DNHP (Di-n-hexyl phthalate) (CAS No.: 000084-75-3)			0.003	n.d.	-

Unless otherwise stated the results shown in this test report refer only to the sample(s) tested. This test report cannot be reproduced, except in full, without prior written permission of the Company. 除非另有說明，此報告結果僅對測試品具結果負責。本報告未經本公司書面同意，不得部份複製。
 This document is issued by the Company subject to its General Conditions of Service printed overleaf, available on request or accessible at www.sgs.com/terms_and_conditions.htm and for electronic format documents, subject to Terms and Conditions for Electronic Documents at www.sgs.com/terms_e-document.htm. Attention is drawn to the limitation of liability, indemnification and jurisdiction issues defined therein. Any holder of this document is advised that information contained hereon reflects the Company's findings at the time of its intervention only and within the limits of Client's instructions, if any. The Company's sole responsibility is to its Client and this document does not exonerate parties to a transaction from exercising all their rights and obligations under the transaction documents. This document cannot be reproduced except in full, without prior written approval of the Company. Any unauthorized alteration, forgery or falsification of the content or appearance of this document is unlawful and offenders may be prosecuted to the fullest extent of the law.

Test Report

No. : CE/2010/C2869 Date : 2010/12/21 Page : 7 of 19

GEM TERMINAL IND. CO., LTD.

NO. 138, LANE513, TA-TUNG ROAD, LU-CHU HSIANG KAOHSIUNG HSIEN, TAIWAN



Note :

1. mg/kg = ppm ; 0.1wt% = 1000ppm
2. n.d. = Not Detected
3. MDL = Method Detection Limit
4. " - " = Not Regulated

Reference information for PAHs:

Requirement of ZEK 01.2-08 : Restraining maximum values for products

Parameter	Category 1	Category 2	Category 3
	Materials in contact with foodstuff or materials which are meant to put in the mouth as well as toys for children <36 months.	Materials with foreseeable skin contact >30 s (prolonged skin contact) and toys not covered by category 1.	Materials with foreseeable skin contact <30 s (short time skin contact) or without skin contact.
Benzo[a]pyrene (mg/kg)	<MDL (<0.2)**	1	20
Sum of 16 EPA-PAH (mg/kg)*	<MDL (<0.2)**	10	200

Remark :

* = Only PAH substances >0.2 mg/kg are taken into account while calculating the sum of PAHs

** = In case that the maximum values exceed the limits of category 1, but are within the limits of category 2, one may confirm the suitability of the tested material for contact with foodstuff or oral mucosa by additional specific migration tests of PAH components based on DIN EN 1186ff and §64 LFGB 80.30-1. The conclusion of the migration test results must be made based on food law criteria.

PFOS Reference Information : Directive 2006/122/EC

- (1) May not be placed on the market or used as a substance or constituent of preparations in a concentration equal to or higher than 0.005 % by mass.
- (2) May not be placed on the market in semi-finished products or articles, or parts thereof, if the concentration of PFOS is equal to or higher than 0.1 % by mass calculated with reference to the mass of structurally or microstructurally distinct parts that contain PFOS or, for textiles or other coated materials, if the amount of PFOS is equal to or higher than 1µg/m² of the coated material.

Unless otherwise stated the results shown in this test report refer only to the sample(s) tested. This test report cannot be reproduced, except in full, without prior written permission of the Company. 除非另有說明，此報告所提之檢驗結果僅針對送檢樣品而言，本報告未經本公司書面許可，不得部份複製。
 This document is issued by the Company subject to its General Conditions of Service printed overleaf, available on request or accessible at www.sgs.com/terms_and_conditions.htm and for electronic format documents, subject to Terms and Conditions for Electronic Documents at www.sgs.com/terms_e-document.htm. Attention is drawn to the limitation of liability, indemnification and jurisdiction issues defined therein. Any holder of this document is advised that information contained hereon reflects the Company's findings at the time of its intervention only and within the limits of Client's instructions, if any. The Company's sole responsibility is to its Client and this document does not exonerate parties to a transaction from exercising all their rights and obligations under the transaction documents. This document cannot be reproduced except in full, without prior written approval of the Company. Any unauthorized alteration, forgery or falsification of the content or appearance of this document is unlawful and offenders may be prosecuted to the fullest extent of the law.



Test Report

No. : CE/2010/C2869 Date : 2010/12/21 Page : 8 of 19

GEM TERMINAL IND. CO., LTD.

NO. 138, LANE513, TA-TUNG ROAD, LU-CHU HSIANG KAOHSIUNG HSIEN, TAIWAN



Style/Item No. : 貨號(產品編號)

4830PBT-BLACK(黑色PBT)

7642	7650AP-4B	8741PL-2PB	M7650B-4B	M98651-B	P97016E-1B
7648	7650B-3B	8741PL-3P	M88051	M98774	P97016H-1B
8480	7650B-4B	8741PL-3PB	M88051BL-1B	P88051A-1B	P97017-1B
2059-03RF	7650BP-3B	8741PS-3P	M88051BL-1BMT	P88051A-1BMT	P97025-1B
2059-04RF	7650BP-4B	8741S-3PB	M88051BL-A1B	P88051A-IYL	P97057-1B
2059-05RF	7675A-2P	8745B	M88051FBL-1B	P88051B	P97057L-1B
2059-06RF	7675C-2PB	8745B-2P	M88051GBL-1B	P88051B-0	P97057S-1B
2067-01P	7681-2P	8745B-G	M88051KBL-1B	P88051B-B	P97058-1B
2067-02P	7683-2P	8745C	M88051KF-1B	P88051B-BA1	P97059-1B
2067-02P95	7683-3P	8746P-3P	M88051KFBL-1B	P88051B-BF	P97059L-1B
2067-03P	7742B-3P	8750A-3P	M88051L	P88051B-IS	P97060-1B
2067-03P95	7747-3P	8750B-3P	M88051LBL-0B	P88051B-ISB	P97060L-1B
2067-04P	7747A-3P	8752-2P	M88051LBL-1B	P88051B-ISB	P97063-1B
2067-04P95	8655L-3P	8752A-2P	M88051LBL-3	P88051D	P97662-2P
2067-05P	8655S-3P	8752A-3P	M88051PL-1B	P88051D-B	P97662-2PB
2067-05P95	8657-2PB	8752B-3P	M88051PL-1BMT	P88051E-MT	P97669-2PB
2067-06P	8657P-2PB	8752C-2P	M88052B-1	P88051F-GEM	P97670-2P
2067-06P95	8661H-2P	8752C-3P	M88052BL-1B	P88051F-IS	P97670-2PW
34RF190TSX RF190TSX	8661P-3P	8752L-3P	M88052BL-1BMT	P88051G-1B	P97670A-2P
34RF190VX RF190VX	8671BP	8755AP-3PB	M88052PL-1B	P88051H-B	P97675-2P
6602-4PK1	8671L-3P	8755BP-3PB	M88052PL-1BMT	P88051K-1B	P97675-2PB
6602-4PK2	8671P	8773-3PB	M88053BL-1B	P88051L-1B	P97681-2P
6602-4PK80	8671P-2P	98068P	M88054BL-1B	P88051LB	P97682-2P
6602-PK1	8671P-G	98070P	M97636BL-1	P88051L-B	P97683-12PB
6602-PK2	8671P-O	98071P	M97640BL-1B	P88051LB-B	P97683-13PB
6632A-6P	8671P-YL	98072P	M97641	P88052A-1BMT	P97683-3P
6702-4RK	8713P	98651A-UE1	M97642D-0X	P88053B	P98000-0B
6702-4RK2	8714A-B	98651A-VDE	M97681-2P	P88053B-B	P98000-1B
6702-4RK80	8714-B	98651B-VDE	M97683-2P	P95020-3P	P98000A-0B
7628B-2P	8714P	98651C-VDE	M97683-3P	P95021-3P	P98000A-1B
7636A-B	8715A	98651D-VDE	M98050-0B	P97000-1B	P98000B-0B

Unless otherwise stated the results shown in this test report refer only to the sample(s) tested. This test report cannot be reproduced, except in full, without prior written permission of the Company. 除非另有說明，此報告結果僅對測試的樣品負責，不適用於除本公司其他產品外，本公司所製之樣品。
 This document is issued by the Company subject to its General Conditions of Service printed overleaf, available on request or accessible at www.sgs.com/terms_and_conditions.htm and, for electronic format documents, subject to Terms and Conditions for Electronic Documents at www.sgs.com/terms_e-document.htm. Attention is drawn to the limitation of liability, indemnification and jurisdiction issues defined therein. Any holder of this document is advised that information contained hereon reflects the Company's findings at the time of its intervention only and within the limits of Client's instructions, if any. The Company's sole responsibility is to its Client and this document does not exonerate parties to a transaction from exercising all their rights and obligations under the transaction documents. This document cannot be reproduced except in full, without prior written approval of the Company. Any unauthorized alteration, forgery or falsification of the content or appearance of this document is unlawful and offenders may be prosecuted to the fullest extent of the law.



Test Report

No. : CE/2010/C2869 Date : 2010/12/21 Page : 9 of 19

GEM TERMINAL IND. CO., LTD.

NO. 138, LANE513, TA-TUNG ROAD, LU-CHU HSIANG KAOHSIUNG HSIEN, TAIWAN



貨號(產品編號)		4830PBT-BLACK(黑色PBT)			
7636AP-3B	8715B	98651E-VDE	M98050C-0B	P97000C-1B	P98000B-1B
7636-B	8715B-B	98651LL-0VDE	M98050C-1B	P97003P-1B	P98000C-1B
7636BP-B	8715H	98651LL-3VDE	M98051A	P97005-1B	P98000F
7636C-B	8715K	98651LL-VDE	M98051A-1	P97010-1B	P98003A
7636CP-3B	8715P	98651L-VDE	M98051A-A1	P97010A	P98003B
7636P-B	8715S	98651M-VDEB	M98051S-1B	P97010A-1B	P98003BP-2
7642A	8715S-CHB	98651S-VDE	M98052	P97010B-B	P98003P
7642B	8732B1-3P	A8675-2P	M98052A	P97010C-1B	P98003P-A
7642U-W	8732B2-3P	A8675-2PB	M98052A-1	P97011A-1B	P98003PS
7648A	8732B-3P	A8675A-2P	M98071P	P97015B-0B	P98003PS-1B
7648E	8732P-3P	A8675A-2PB	M98071P-1B	P97015B-1B	P98003P-UE
7650A1-4B	8732P-3PG	A8675B-2P	M98072-1B	P97016A-0B	P98003S
7650A1P-3B	8741P-2PB	A8675B-2PB	M98072P	P97016A-1B	P98005P
7650A1P-4B	8741PA-3P	A98068P	M98072P-1B	P97016B-0B	P98005PS-1B
7650A-4B	8741PA-3PB	A98070P	M98072P-B	P97016B-1B	P98007AP-1B
7650AP-3B	8741PH-3PB	M7650A-4B	M98079	P97016E-0B	P98007L-1B
P98007P	P98050A-B	P98061	P98093S-1B		
P98007PS-1B	P98051A	P98061-1B	P98095-1B		
P98008A-1B	P98051A-1G	P98062	P98350		
P98008P-1B	P98051B	P98062-1B	P98651		
P98009P-1B	P98051B-BA1	P98065-2PB	P98651A		
P98010-0B	P98051D	P98065-3PB	P98675-2B		
P98010-1B	P98051D-B	P98065B-2PB	P98795		
P98010A-0B	P98051D-G	P98065P-1B	P98795A		
P98010A-1B	P98051E	P98065P-2PB	P98795B		
P98010B	P98051E-JL	P98065P-3PB	S7650A-3B		
P98010B-B	P98051F-B	P98068-B	S7650A-4B		
P98010E-0B	P98051F-FX	P98068P	S7650B-3B		
P98010E-1B	P98051P	P98069P-B	S7650B-4B		
P98013-0B	P98052	P98070	S8741PL-3PB		

Unless otherwise stated the results shown in this test report refer only to the sample(s) tested. This test report cannot be reproduced, except in full, without prior written permission of the Company. 除非另有說明，此報告僅對測試的樣品負責。本報告只為本公司內部使用，不得對外複製。
 This document is issued by the Company subject to its General Conditions of Service printed overleaf, available on request or accessible at www.sgs.com/terms_and_conditions.htm and for electronic format documents, subject to Terms and Conditions for Electronic Documents at www.sgs.com/terms_e-document.htm. Attention is drawn to the limitation of liability, indemnification and jurisdiction issues defined therein. Any holder of this document is advised that information contained hereon reflects the Company's findings at the time of its intervention only and within the limits of Client's instructions, if any. The Company's sole responsibility is to its Client and this document does not exonerate parties to a transaction from exercising all their rights and obligations under the transaction documents. This document cannot be reproduced except in full, without prior written approval of the Company. Any unauthorized alteration, forgery or falsification of the content or appearance of this document is unlawful and offenders may be prosecuted to the fullest extent of the law.



Test Report

No. : CE/2010/C2869 Date : 2010/12/21 Page : 10 of 19

GEM TERMINAL IND. CO., LTD.

NO. 138, LANE513, TA-TUNG ROAD, LU-CHU HSIANG KAOHSIUNG HSIEN, TAIWAN



貨號(產品編號)		4830PBT-BLACK(黑色PBT)	
P98013-1B	P98052B	P98070-1B	S8752C-2P
P98013A	P98053A	P98070P	S88051G-1B
P98013A-1B	P98053A-1B	P98073B	S88051GE-1B
P98013B-1B	P98053A-B	P98073C	S88051GH-1B
P98015-0B	P98053B	P98073D	S88051K-1B
P98015-1B	P98053L-1B	P98073D-1B	S88051KB-1B
P98015A-0B	P98054A	P98073E-2PB	S88054B-1B
P98015A-1B	P98054A-1B	P98073F-1B	S88054E-1B
P98015A-1F	P98055	P98073P	P98050-0B
P98017P	P98055-0B	P98073PS-1B	P98039-1B
P98017PS-1B	P98056	P98075-1B	P98037-1B
P98019-1B	P98056A-B	P98077A-1B	P97668-2PB
P98020-1B	P98057	P98077P	P97014A-1B
P98020AP-0B	P98057-1	P98077S	8750C-2P
P98020AP-1B	P98057A	P98079E	8750A-2P
P98020AS-1B	P98057A-1B	P98079F	S8750-2P
P98020B-1B	P98057P	P98081-1B	S8750C-2P
P98020BP-1B	P98058	P98081P-1B	P98088-2P
P98020CP-1B	P98058-1	P98084-1B	P97692-1B
P98020P	P98058A	P98086-2PB	P97693-2P
P98022A	P98058A-1	P98086A-2PB	P88056-1B
P98022E-1B	P98058A-1B	P98086B-2PB	7648A-MT
P98023A-B	P98058B-1B	P98087-2PB	7648E-MT
P98024-1B	P98059	P98090A	M88053D-B
P98025	P98059-1	P98090B	M88053A-1B
P98030A-1	P98059A	P98090C-1B	
P98030P	P98059A-1	P98090P	
P98032	P98059A-1B	P98092-1B	
P98032A-1B	P98059L-1B	P98092A-1B	
P98032A-B	P98060	P98092A-1W	

Unless otherwise stated the results shown in this test report refer only to the sample(s) tested. This test report cannot be reproduced, except in full, without prior written permission of the Company. 除非另有說明，此報告結果僅對測試的樣品負責。本報告未經本公司書面許可，不可部分複製。

This document is issued by the Company subject to its General Conditions of Service printed overleaf, available on request or accessible at www.sgs.com/terms_and_conditions.htm and for electronic format documents, subject to Terms and Conditions for Electronic Documents at www.sgs.com/terms_e-document.htm. Attention is drawn to the limitation of liability, indemnification and jurisdiction issues defined therein. Any holder of this document is advised that information contained hereon reflects the Company's findings at the time of its intervention only and within the limits of Client's instructions, if any. The Company's sole responsibility is to its Client and this document does not exonerate parties to a transaction from exercising all their rights and obligations under the transaction documents. This document cannot be reproduced except in full, without prior written approval of the Company. Any unauthorized alteration, forgery or falsification of the content or appearance of this document is unlawful and offenders may be prosecuted to the fullest extent of the law.



Test Report

No. : CE/2010/C2869 Date : 2010/12/21 Page : 11 of 19

GEM TERMINAL IND. CO., LTD.

NO. 138, LANE513, TA-TUNG ROAD, LU-CHU HSIANG KAOHSIUNG HSIEN, TAIWAN



貨號(產品編號)		4830PBT-BLACK(黑色PBT)	
P98043-1B	P98060-1	P98092P	
P98043A-1B	P98060A-1	P98092P-1B	
P98043AP-1B	P98060A-1B	P98092S-1B	
P98043J-1B	P98060AL-1B	P98093	
P98043PM-1B	P98060L	P98093-1B	
P98043S-1B	P98060L-1B	P98093A-1B	

Unless otherwise stated the results shown in this test report refer only to the sample(s) tested. This test report cannot be reproduced, except in full, without prior written permission of the Company. 除非另有說明，此報告結果僅對測試的樣品負責。本報告未經本公司書面許可，不可部份複製。
This document is issued by the Company subject to its General Conditions of Service printed overleaf, available on request or accessible at www.sgs.com/terms_and_conditions.htm and for electronic format documents, subject to Terms and Conditions for Electronic Documents at www.sgs.com/terms_e-document.htm. Attention is drawn to the limitation of liability, indemnification and jurisdiction issues defined therein. Any holder of this document is advised that information contained hereon reflects the Company's findings at the time of its intervention only and within the limits of Client's instructions, if any. The Company's sole responsibility is to its Client and this document does not exonerate parties to a transaction from exercising all their rights and obligations under the transaction documents. This document cannot be reproduced except in full, without prior written approval of the Company. Any unauthorized alteration, forgery or falsification of the content or appearance of this document is unlawful and offenders may be prosecuted to the fullest extent of the law.

Test Report

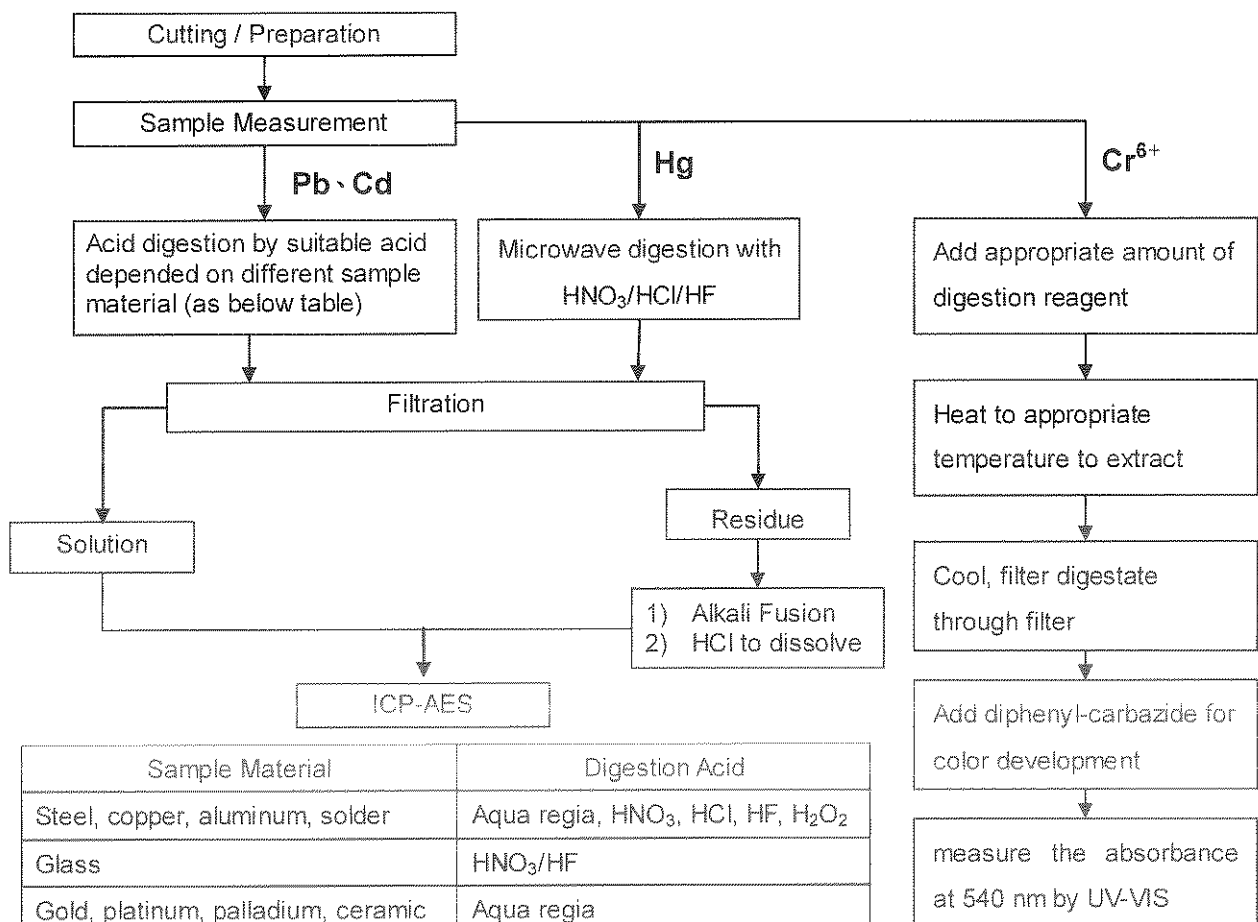
No. : CE/2010/C2869 Date : 2010/12/21 Page : 12 of 19

GEM TERMINAL IND. CO., LTD.

NO. 138, LANE513, TA-TUNG ROAD, LU-CHU HSIANG KAOHSIUNG HSIEN, TAIWAN



- 1) These samples were dissolved totally by pre-conditioning method according to below flow chart. (Cr⁶⁺ test method excluded)
- 2) Name of the person who made measurement: Climbgreat Yang
- 3) Name of the person in charge of measurement: Troy Chang



Sample Material	Digestion Acid
Steel, copper, aluminum, solder	Aqua regia, HNO ₃ , HCl, HF, H ₂ O ₂
Glass	HNO ₃ /HF
Gold, platinum, palladium, ceramic	Aqua regia
Silver	HNO ₃
Plastic	H ₂ SO ₄ , H ₂ O ₂ , HNO ₃ , HCl
Others	Any acid to total digestion

Unless otherwise stated the results shown in this test report refer only to the sample(s) tested. This test report cannot be reproduced, except in full, without prior written permission of the Company. 除非另有說明，此報告結果僅對檢驗的樣品負責。未經本公司書面許可，不得部份複製。

This document is issued by the Company subject to its General Conditions of Service printed overleaf, available on request or accessible at www.sgs.com/terms_and_conditions.htm and, for electronic format documents, subject to Terms and Conditions for Electronic Documents at www.sgs.com/terms_e-document.htm. Attention is drawn to the limitation of liability, indemnification and jurisdiction issues defined therein. Any holder of this document is advised that information contained hereon reflects the Company's findings at the time of its intervention only and within the limits of Client's instructions, if any. The Company's sole responsibility is to its Client and this document does not exonerate parties to a transaction from exercising all their rights and obligations under the transaction documents. This document cannot be reproduced except in full, without prior written approval of the Company. Any unauthorized alteration, forgery or falsification of the content or appearance of this document is unlawful and offenders may be prosecuted to the fullest extent of the law.

Test Report

No. : CE/2010/C2869 Date : 2010/12/21 Page : 13 of 19

GEM TERMINAL IND. CO., LTD.

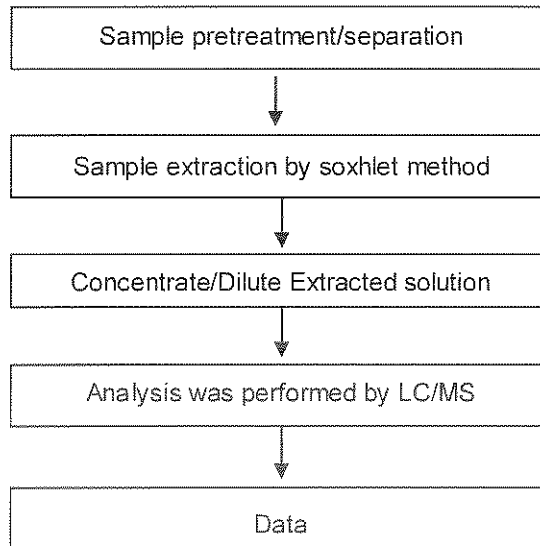
NO. 138, LANE513, TA-TUNG ROAD, LU-CHU HSIANG KAOHSIUNG HSIEN, TAIWAN



Analytical flow chart of Soxhlet extraction (LC/MS) procedure

- 1) Name of the person who made measurement: Lydia Fu
- 2) Name of the person in charge of measurement: Shinjyh Chen

■ Test Items: PFOS/PFOA、Benzotriazole



Unless otherwise stated the results shown in this test report refer only to the sample(s) tested. This test report cannot be reproduced, except in full, without prior written permission of the Company. 除非另有說明，此報告結果僅對測試的樣品負責，本報告未經本公司書面許可，不得部分複製。
This document is issued by the Company subject to its General Conditions of Service printed overleaf, available on request or accessible at www.sgs.com/terms_and_conditions.htm and, for electronic format documents, subject to Terms and Conditions for Electronic Documents at www.sgs.com/terms_e-document.htm. Attention is drawn to the limitation of liability, indemnification and jurisdiction issues defined therein. Any holder of this document is advised that information contained hereon reflects the Company's findings at the time of its intervention only and within the limits of Client's instructions, if any. The Company's sole responsibility is to its Client and this document does not exonerate parties to a transaction from exercising all their rights and obligations under the transaction documents. This document cannot be reproduced except in full, without prior written approval of the Company. Any unauthorized alteration, forgery or falsification of the content or appearance of this document is unlawful and offenders may be prosecuted to the fullest extent of the law.

Test Report

No. : CE/2010/C2869 Date : 2010/12/21 Page : 14 of 19

GEM TERMINAL IND. CO., LTD.

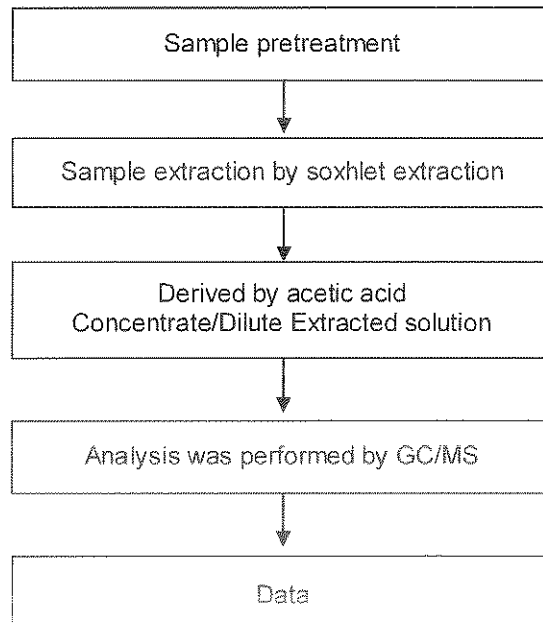
NO. 138, LANE513, TA-TUNG ROAD, LU-CHU HSIANG KAOHSIUNG HSIEN, TAIWAN



Analytical flow chart

- 1) Name of the person who made measurement: Lydia Fu
- 2) Name of the person in charge of measurement: Shinjyh Chen

■ Test Items: TBBP-A 、 Bisphenol A



Unless otherwise stated the results shown in this test report refer only to the sample(s) tested. This test report cannot be reproduced, except in full, without prior written permission of the Company. 除非另有說明，此報告結果僅對測試的樣品負責，本報告受持本公司專門許可，不得部份複製。
This document is issued by the Company subject to its General Conditions of Service printed overleaf, available on request or accessible at www.sgs.com/terms_and_conditions.htm and, for electronic format documents, subject to Terms and Conditions for Electronic Documents at www.sgs.com/terms_e-document.htm. Attention is drawn to the limitation of liability, indemnification and jurisdiction issues defined therein. Any holder of this document is advised that information contained hereon reflects the Company's findings at the time of its intervention only and within the limits of Client's instructions, if any. The Company's sole responsibility is to its Client and this document does not exonerate parties to a transaction from exercising all their rights and obligations under the transaction documents. This document cannot be reproduced except in full, without prior written approval of the Company. Any unauthorized alteration, forgery or falsification of the content or appearance of this document is unlawful and offenders may be prosecuted to the fullest extent of the law.

Test Report

No. : CE/2010/C2869 Date : 2010/12/21 Page : 15 of 19

GEM TERMINAL IND. CO., LTD.

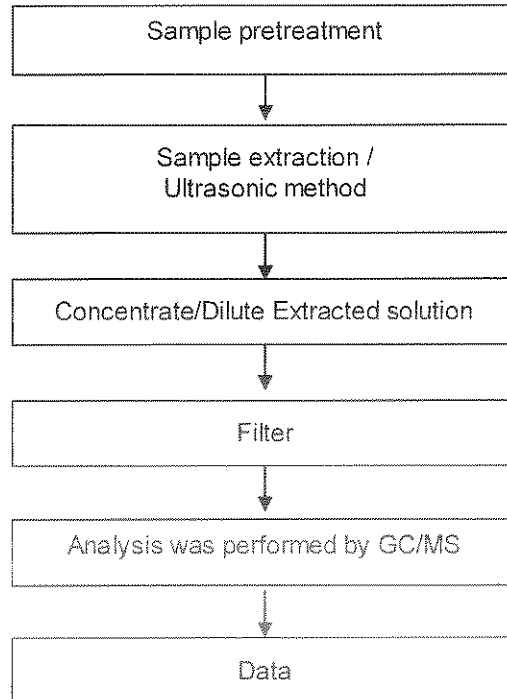
NO. 138, LANE513, TA-TUNG ROAD, LU-CHU HSIANG KAOHSIUNG HSIEN, TAIWAN



Analytical flow chart of Ultrasonic extraction (GC/MS) procedure

- 1) Name of the person who made measurement: Roman Wong
- 2) Name of the person in charge of measurement: Shinjyh Chen

■ Test Items: HBCDD、Dimethyl Fumarate、PAHs、AP、Ethylene glycol ether



Unless otherwise stated the results shown in this test report refer only to the sample(s) tested. This test report cannot be reproduced, except in full, without prior written permission of the Company. 除非另有說明，此報告結果僅針對測試的樣品有效。本報告未經本公司書面許可，不得部份複製。

This document is issued by the Company subject to its General Conditions of Service printed overleaf, available on request or accessible at www.sgs.com/terms_and_conditions.htm and, for electronic format documents, subject to Terms and Conditions for Electronic Documents at www.sgs.com/terms_e-document.htm. Attention is drawn to the limitation of liability, indemnification and jurisdiction issues defined therein. Any holder of this document is advised that information contained hereon reflects the Company's findings at the time of its intervention only and within the limits of Client's instructions, if any. The Company's sole responsibility is to its Client and this document does not exonerate parties to a transaction from exercising all their rights and obligations under the transaction documents. This document cannot be reproduced except in full, without prior written approval of the Company. Any unauthorized alteration, forgery or falsification of the content or appearance of this document is unlawful and offenders may be prosecuted to the fullest extent of the law.

Test Report

No. : CE/2010/C2869 Date : 2010/12/21 Page : 16 of 19

GEM TERMINAL IND. CO., LTD.

NO. 138, LANE513, TA-TUNG ROAD, LU-CHU HSIANG KAOHSIUNG HSIEN, TAIWAN

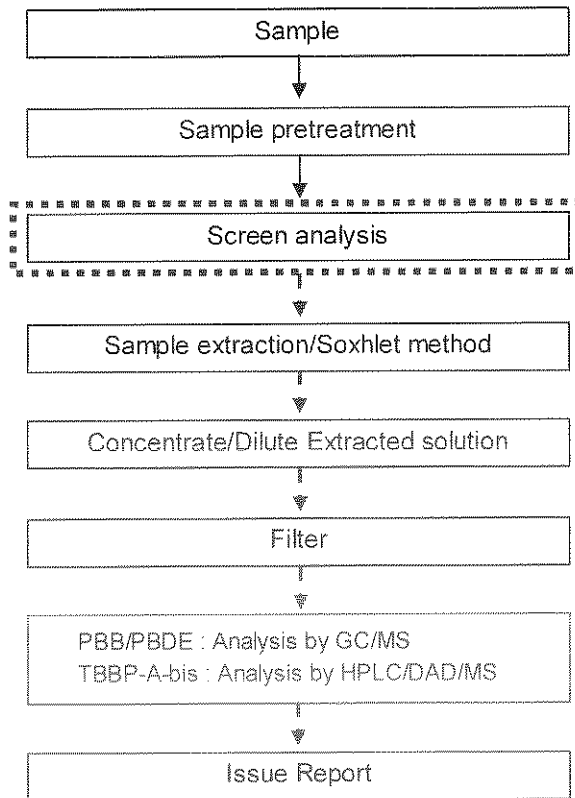


Analytical flow chart

- 1) Name of the person who made measurement: Roman Wong
- 2) Name of the person in charge of measurement: Troy Chang

■ Test Items: PBB/PBDE, TBBP-A-bis

First testing process → Optional screen process Confirmation process - ►



Unless otherwise stated the results shown in this test report refer only to the sample(s) tested. This test report cannot be reproduced, except in full, without prior written permission of the Company. 除非另有說明，此報告結果僅對測試樣品負責。本報告未經本公司書面許可，不可部份複製。

This document is issued by the Company subject to its General Conditions of Service printed overleaf, available on request or accessible at www.sgs.com/terms_and_conditions.htm and for electronic format documents, subject to Terms and Conditions for Electronic Documents at www.sgs.com/terms_e-document.htm. Attention is drawn to the limitation of liability, indemnification and jurisdiction issues defined therein. Any holder of this document is advised that information contained hereon reflects the Company's findings at the time of its intervention only and within the limits of Client's instructions, if any. The Company's sole responsibility is to its Client and this document does not exonerate parties to a transaction from exercising all their rights and obligations under the transaction documents. This document cannot be reproduced except in full, without prior written approval of the Company. Any unauthorized alteration, forgery or falsification of the content or appearance of this document is unlawful and offenders may be prosecuted to the fullest extent of the law.

Test Report

No. : CE/2010/C2869 Date : 2010/12/21 Page : 17 of 19

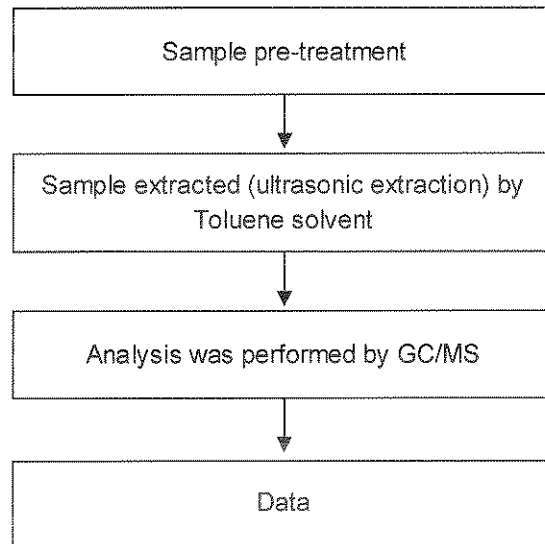
GEM TERMINAL IND. CO., LTD.

NO. 138, LANE513, TA-TUNG ROAD, LU-CHU HSIANG KAOHSIUNG HSIEN, TAIWAN



PAHs (Polynuclear Aromatic Hydrocarbons) analytical flow chart

- 1) Name of the person who made measurement: Andy Shu
- 2) Name of the person in charge of measurement: Shinjyh Chen



Unless otherwise stated the results shown in this test report refer only to the sample(s) tested. This test report cannot be reproduced, except in full, without prior written permission of the Company. 除非另有說明，此報告結果僅對測試的樣品負責，本報告未經本公司同意不得複製。
This document is issued by the Company subject to its General Conditions of Service printed overleaf, available on request or accessible at www.sgs.com/terms_and_conditions.htm and, for electronic format documents, subject to Terms and Conditions for Electronic Documents at www.sgs.com/terms_e-document.htm. Attention is drawn to the limitation of liability, indemnification and jurisdiction issues defined therein. Any holder of this document is advised that information contained hereon reflects the Company's findings at the time of its intervention only and within the limits of Client's instructions, if any. The Company's sole responsibility is to its Client and this document does not exonerate parties to a transaction from exercising all their rights and obligations under the transaction documents. This document cannot be reproduced except in full, without prior written approval of the Company. Any unauthorized alteration, forgery or falsification of the content or appearance of this document is unlawful and offenders may be prosecuted to the fullest extent of the law.

Test Report

No. : CE/2010/C2869 Date : 2010/12/21 Page : 18 of 19

GEM TERMINAL IND. CO., LTD.

NO. 138, LANE513, TA-TUNG ROAD, LU-CHU HSIANG KAOHSIUNG HSIEN, TAIWAN



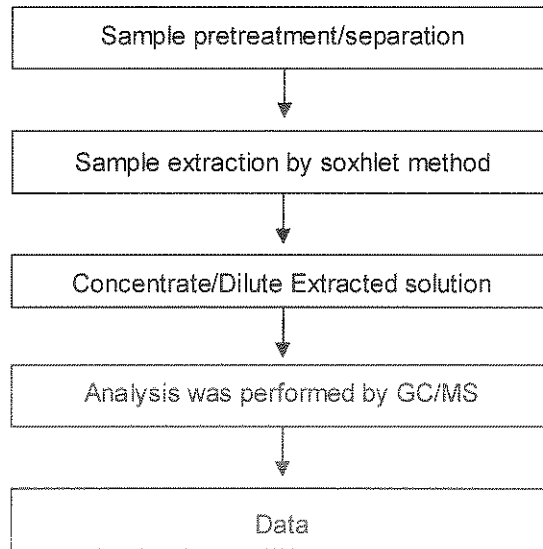
Analytical flow chart of Soxhlet extraction (GC/MS) procedure

1) Name of the person who made measurement: Lydia Fu

2) Name of the person in charge of measurement: Shinjyh Chen

■ Test Items: Phthalate、Benzotriazole、HBCDD、NP、DBBT、

Organic phosphorus compounds



Unless otherwise stated the results shown in this test report refer only to the sample(s) tested. This test report cannot be reproduced, except in full, without prior written permission of the Company. 除非另有說明，此報告結果僅對測試的樣品負責，不得作為本公司其他用途，亦不得任意複製。
This document is issued by the Company subject to its General Conditions of Service printed overleaf, available on request or accessible at www.sgs.com/terms_and_conditions.htm and, for electronic format documents, subject to Terms and Conditions for Electronic Documents at www.sgs.com/terms_e-document.htm. Attention is drawn to the limitation of liability, indemnification and jurisdiction issues defined therein. Any holder of this document is advised that information contained hereon reflects the Company's findings at the time of its intervention only and within the limits of Client's instructions, if any. The Company's sole responsibility is to its Client and this document does not exonerate parties to a transaction from exercising all their rights and obligations under the transaction documents. This document cannot be reproduced except in full, without prior written approval of the Company. Any unauthorized alteration, forgery or falsification of the content or appearance of this document is unlawful and offenders may be prosecuted to the fullest extent of the law.

Test Report

No. : CE/2010/C2869 Date : 2010/12/21 Page : 19 of 19

GEM TERMINAL IND. CO., LTD.

NO. 138, LANE513, TA-TUNG ROAD, LU-CHU HSIANG KAOHSIUNG HSIEN, TAIWAN



** End of Report **

Unless otherwise stated the results shown in this test report refer only to the sample(s) tested. This test report cannot be reproduced, except in full, without prior written permission of the Company. 除非另有說明，此報告結果僅對測試之樣品負責，本報告未經本公司同意，不得翻印或轉載。
This document is issued by the Company subject to its General Conditions of Service printed overleaf, available on request or accessible at www.sgs.com/terms_and_conditions.htm and, for electronic format documents, subject to Terms and Conditions for Electronic Documents at www.sgs.com/terms_e-document.htm. Attention is drawn to the limitation of liability, indemnification and jurisdiction issues defined therein. Any holder of this document is advised that information contained hereon reflects the Company's findings at the time of its intervention only and within the limits of Client's instructions, if any. The Company's sole responsibility is to its Client and this document does not exonerate parties to a transaction from exercising all their rights and obligations under the transaction documents. This document cannot be reproduced except in full, without prior written approval of the Company. Any unauthorized alteration, forgery or falsification of the content or appearance of this document is unlawful and offenders may be prosecuted to the fullest extent of the law.