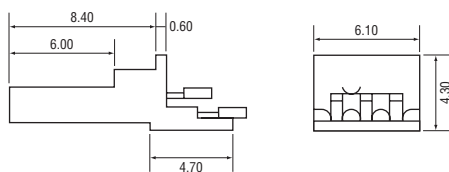
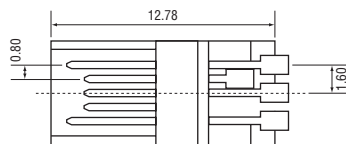
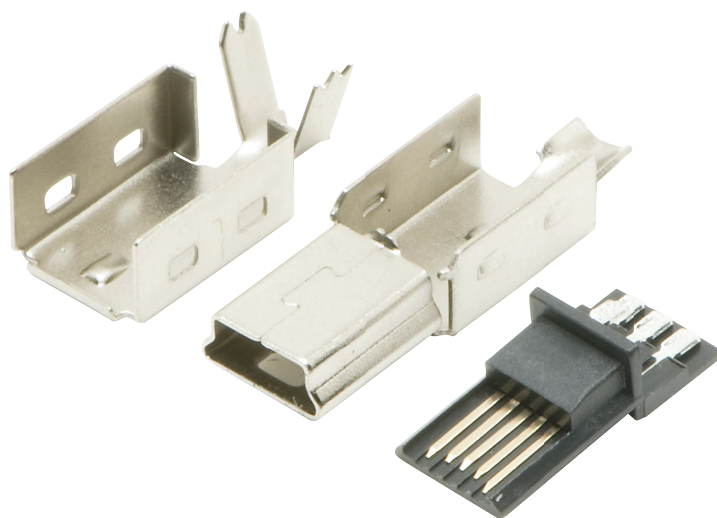
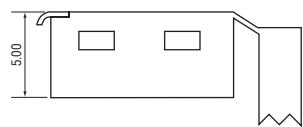
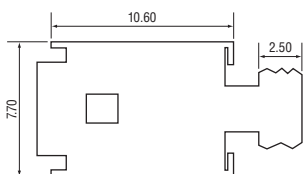


Specifications:

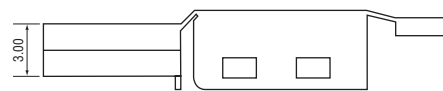
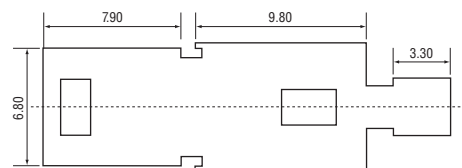
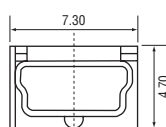
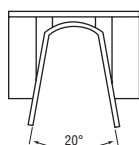
- Current rating: 0.5A/pin max.
- Voltage rating: 30V (AC)
- Dielectric withstanding voltage: 100VAC 1 minute
- Contact resistance: 30mΩmax.
- Insulation resistance: 100MΩmin.
- Temperature range: -20°C to +70°C



Housing with contact



Upper shell



Lower shell