

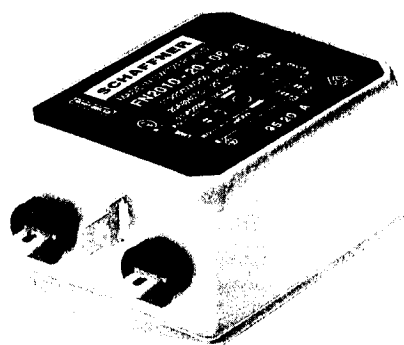
Chassis Mounting

Order code	Manufacturer code	Description
26-4560	FN2010-1/06	1A FN2010 CHASSIS MNTG FILTER
26-4565	FN2010-3/06	3A FN2010 CHASSIS MNTG FILTER
26-4570	FN2010-6/06	6A FN2010 CHASSIS MTNG FILTER
26-4575	FN2010-10/06	10A FN2010 CHASSIS MNTG FILTER
26-4580	FN2010-16/06	16A FN2010 CHASSIS MTNG FILTER

Chassis Mounting	Page 1 of 4
The enclosed information is believed to be correct, Information may change 'without notice' due to product improvement. Users should ensure that the product is suitable for their use. E. & O. E.	Revision A 04/07/2003

General-purpose filter

FN 2010



Part No.	Current Rating
FN2010-1/06	1A
FN2010-3/06	3A
FN2010-6/06	6A
FN2010-10/06	10A
FN2010-16/06	16A

Approvals



specifications

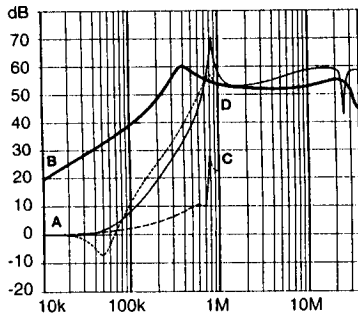
Current ratings		Inductance L mH	Capacitance		Resistance R MΩ	Housing	Weight g
A at 40°C (25°)			Cx μF	Cy nF			
1	(1.15)	12	0.1	4.7	1	F3	65
3	(3.45)	2.5	0.1	4.7	1	F3	65
6	(6.9)	1	0.1	4.7	1	F3	65
10	(11.5)	0.8	0.1	4.7	1	F2	85
16	(18.4)	0.65	0.1	4.7	1	H2	140

Maximum operating voltage VAC Hz		Operating frequency Hz	Hipot test voltage PN→E P→N VAC VDC		MTBF Per Mil-HB-217F at 40°C 230V hours	Maximum leakage mA/phase
250	50/60	DC to 400	2000	1700	800 000	0.4*

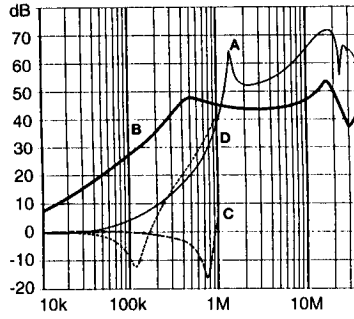
Insertion loss

Per CISPR 17; A = 50Ω/50Ω sym, B = 50Ω/50Ω asym, C = 0.1Ω/100Ω sym, D = 100Ω/0.1Ω sym

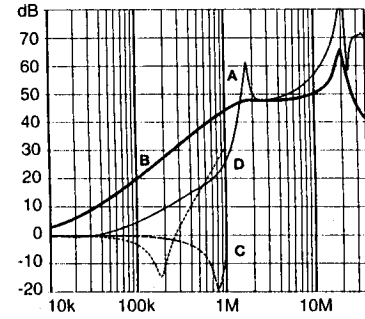
1A types



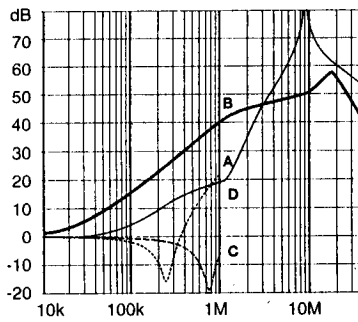
3A types



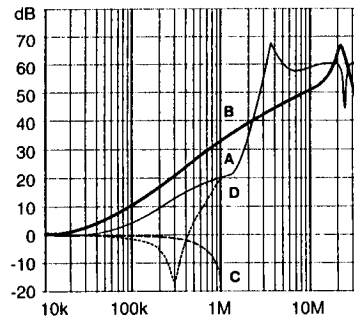
6A types



10A types

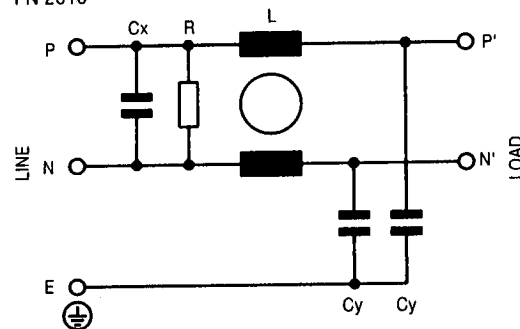


16A types



Electrical schematics

FN 2010



See tables for component values.

Mechanical Data

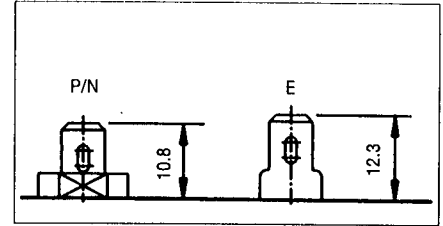
I/O connections

Housing style	F2	F3	H2	Tol.* ± mm
A	64 ± 0.3		71	± 0.5
B	35		46.6	± 0.5
C	29.3	24.3	29.3	± 0.5
D	43.5		50.5	± 0.5
F	54		61	± 0.3
J	21		21	± 0.2
K	8.3 [§] /9.3		10.8/8.3 [§]	± 0.5
L	15.3		19.3	± 0.5
M	5.3		5.3	± 0.1
N	6.3		6.3	± 0.1
P	0.7		0.7	± 0.1
S			20.1/30.5 [§]	± 0.5

All dimensions in mm; 1 inch = 25.4mm.

* Measurements share this common tolerance unless otherwise stated.

Dimensions in mm. 1 inch = 25.4mm

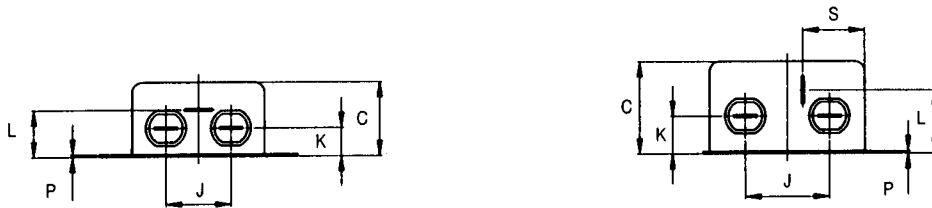


Type /06
Industry-standard size fast-on which may also be used as a solder lug, 6.3 x 0.8mm.

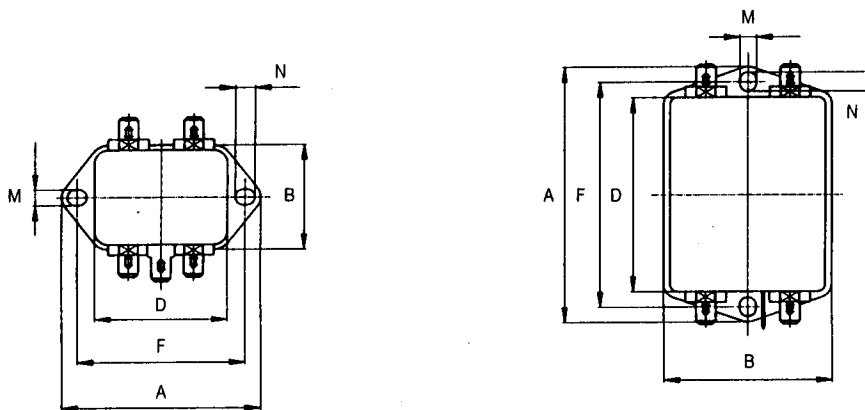
Cross reference list AWG to copper area in mm²

Current ratings	AWG number	Cu mm ² (approx)
1-3A	20	0.54
6-10A	18	0.83
12-16A	16	1.34

SIDE



TOP



Housings F2 and F3

Housings H2, K1 and K2