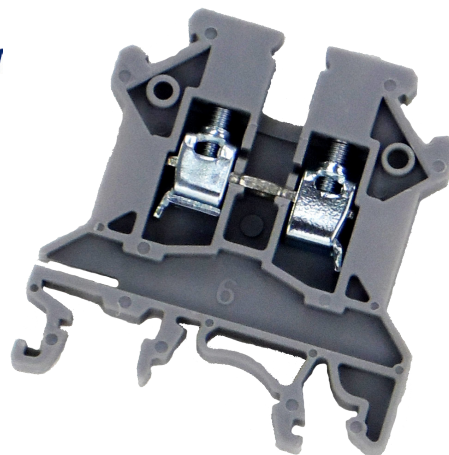


Rapid Part Number: **49-9431**
 Europa Part Number: **CTS50U**
 Specifications and dimensions



- Feed through screw clamp terminal
- Suitable for TS32 and TS35 din rail mounting

Features	
Length	75mm
Width	20.5mm
Depth	71mm
Weight	0.118Kg
Maximum cable connection	50mm ²
Rated voltage	1000V
Rated current	150A
Tightening torque	6.8Nm
Construction	6-6 polyamide
Colour	Grey
Related products	
End plate	Integral
End stop	CA702
Group marker	CA509/G1
Holding plate	CSP1
Protective cover 150mm	CTSPC
Group marker holder	GMH7

ⓘ **ALL PRODUCTS, PRODUCT SPECIFICATIONS AND DATA ARE SUBJECT TO CHANGE WITHOUT NOTICE.**

Information provided in data sheets and/or specifications may vary from actual results in different applications and performance may vary over time. **All products must be installed according to manufacturers instructions.**

Europa House, Airport Way, Luton, Beds, LU2 9NH Tel: 01582 692 440 / Fax: 01582 692 450 e-mail: sales@europacomponents.com
 website: <http://www.europacomponents.com>