

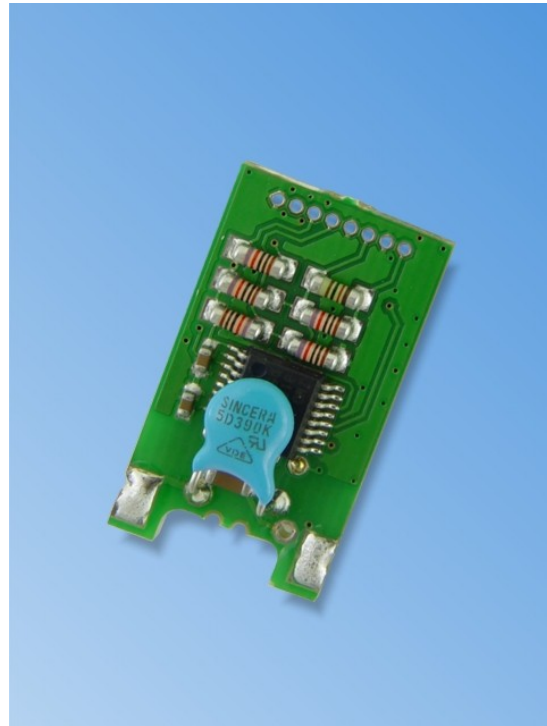


### Characteristic features

- ▶ Miniature transducer module for PT 1000
- ▶ Standard signal 0 ... 10 V or 4 ... 20 mA
- ▶ Different measuring range of -30 ... +300 °C
- ▶ Resistance characteristics as per DIN 60751
- ▶ Precisely 3 point calibrated, no further adjustment necessary
- ▶ High precision and long term stability
- ▶ Innovative, digital ASIC-Technology

### Typical areas of application

- ▶ Industrial instrumentation
- ▶ Machine manufacture
- ▶ Building automation
- ▶ Heating, ventilation and air-conditioning
- ▶ OEM products



### Features

The module is an affordable, digital transducer in miniaturised construction for PT 1000 measuring resistors. The module converts the resistance characteristics of a PT 1000 sensor into an industrial standard signal of 0 ... 10 V (3 wire connection) or 4 ... 20 mA (two wire connection). With this, the operation of sensor is possible with control systems, for example, an SPS with voltage or current input.

With the most modern digital ASIC technology, an outstanding measuring accuracy and long term stability is guaranteed in the application. The resistance curve of the sensor element is linearised over a second order polynomial in accordance with DINIEC 60751 and the measuring amplifier is temperature compensated.

The module is calibrated at three points at works as per the resistance characteristics; a further adjustment by customer is not necessary. The robust module is meant for continuous application in industrial environment and is protected against over voltage and transients with the help of a varistor.

Note: The scope of supply is without PT 1000 measuring resistor, please additionally include a suitable model with the order.

**For further information, please visit our website:**

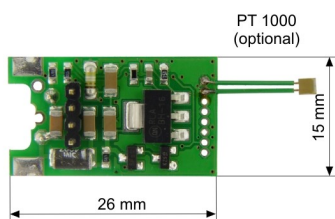
[www.hygroSENS.com](http://www.hygroSENS.com)

### Technical data

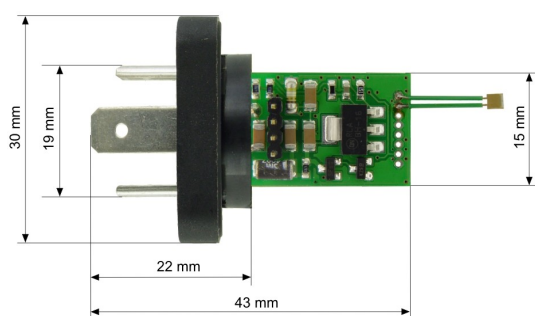
Transducer module PT1000	
Sensor element	Platinum resistance PT 1000 (not in scope of supply)
Measuring range	As per type (see table) -T1 -30 ... +70 °C -T2 0 ... 160 °C -T3 0 ... 300 °C
Resist. characteristics	DIN/IEC 60751
Accuracy of resistance characteristics	Better than $\pm 0.15\%$ FS (at 23 °C Nom. temperature)
PT1000 measuring current	< 300 $\mu$ A
Output signal	4 ... 20 mA, two wire or 0 ... 10 V, three wire
Operating voltage	10 ... 30 V DC
Temperature range for electronics	-20 ... +80 °C
Dimensions:	27 x 15 x 5 mm
CE-conformance	89/336/EEG
Over voltage protection	Varistor and RC-Filter
Permissible load (only type -20MA)	$R_a[\Omega] = (U_v[V] - 10V) \cdot 0,02 A$
Connection	Soldered connection or 4-pin industrial plug, DIN 43650 (Optional-ST)
Other scales of output signals are available on enquiry!	
Rights reserved for change in technical data!	



### Module drawing



### Drawing of module with plug



### Connection of sensors

The PT 1000 sensor element is soldered at the two upper pins as shown above. The other pins are not allowed to be connected or short circuited. The connection must be done very carefully because of the very small pin spacing. Any type of PT 1000 sensors like thin film chip resistances, wire wound sensors or even MIMS resistance thermometers can be used as long as the resistance characteristics are as per DIN/IEC 60751. The connection lead to the sensor should be as short as possible, in order to avoid measuring error due to distortion in resistance characteristics.

Note: The sensor element is not in scope of supply (please include separately with order).

### Calibration

The measuring probes are calibrated at works with reference to PT 1000 resistance characteristics (DIN/IEC 60751), hence full interchangeability of the sensor element is guaranteed corresponding to the accuracy class. Because of the high quality platinum resistance, the probes are long term stable and maintenance free. Hence, a re-calibration is not required.

### Guarantee

On our high quality measuring products, you get a guarantee of 24 months.

Mechanically damaged sensors or tampering into electronics makes the sensors devoid of guarantee claims. Calibration services are not covered in the guarantee.

### Connection

**Important hint: The four pole pin strip available on the module is for calibration of the ASIC and hence shall not be connected! Similarly, the OWI-connection of 20 mA module also should not be connected to any wire!**

The connection of the module (type –10V/20MA) can be identified as per the picture in the next page. Wrong connection can lead to failure of the module!

The connection of the module is done at the lateral soldering surfaces and pads as per the sketch. The dimensions and contact layout also enables direct soldering of industrial plugs as per DIN 43650. On demand, the module can be assembled into a housing or provided in moulded form. Suitable housings are also available on enquiry.

The model with voltage output requires operating voltage. In order to avoid measuring error in the 0...10 V model due to line resistance and current flow through the grounding wire, a separate grounding wire is to be employed for the signal voltage (four pin connection, see sketch).

The model with current output is supplied by the loop current and hence it is connected with two pin system. The pin SHIELD is optional and can be used in application with shielded connection cable for connecting to the shielding.

### Ordering number format

CON-PT- MOD	- 10V	- T1	-ST
			- ST with 4-pin industrial plug, DIN 43650
			Output scaling
			- T1 -30 ... +70 °C
			- T2 0 ... 160 °C
			- T3 0 ... 300 °C
			- T4 customised
			</

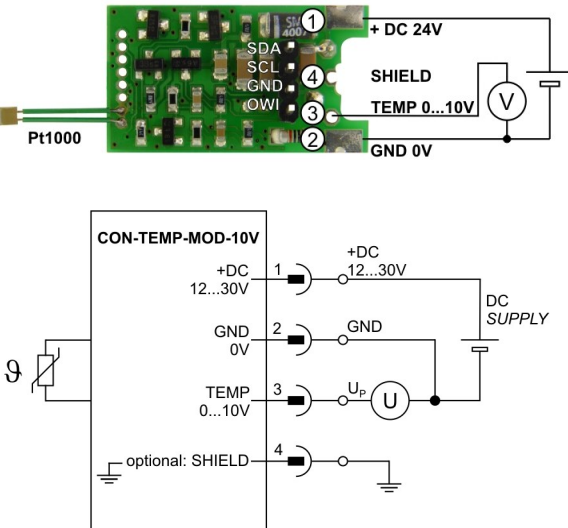


### Connection layouts

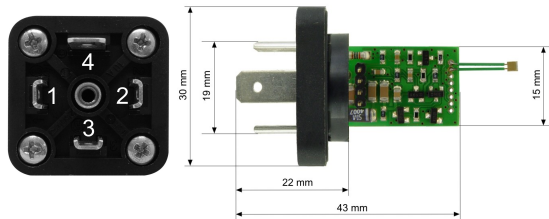
#### Voltage output

Temperature measurement 0 ... 10V, Type –10V

Identification: See picture

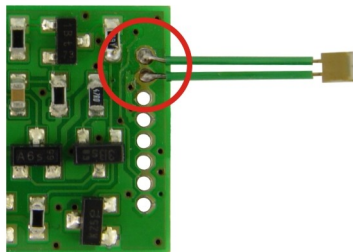


Pin	Function	Description
1	+DC 24 V	Operating voltage
2	GND 0V	Reference potential
3	TEMP 0 ... 10 V	Temperature signal 0 ... 10 V
4	SHIELD	Shielding (optionally)



The measurement of the output signal should be done with separate signal ground, in order to avoid measuring error due to voltage drop at the supply ground.

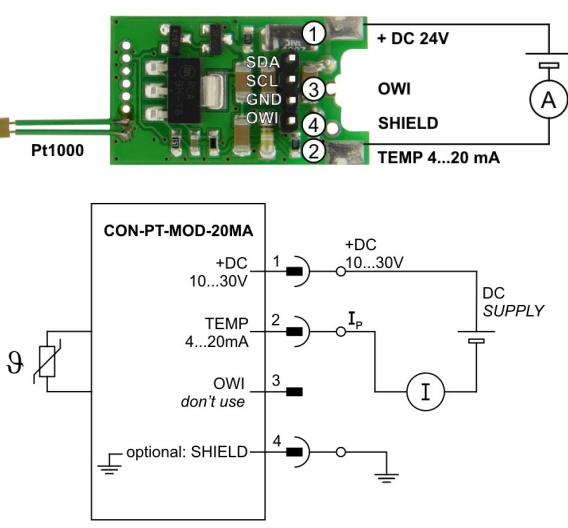
#### Sensor connection



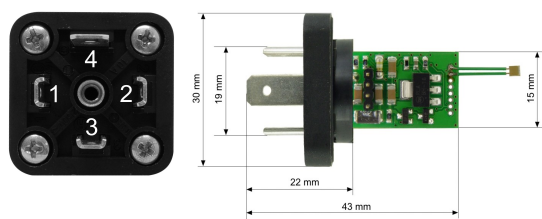
#### Current output

Temp. measurement 4..20 mA, Type –20MA

Identification: See picture



Pin	Function	Description
1	+DC 24 V	Operating voltage
2	TEMP 4 ... 20 mA	Temp. signal 4 ... 20 mA
3	OWI	don't use!
4	SHIELD	Shielding (optionally)



The shielding (SHIELD) is to be optionally covered. Connection through shielded cables is recommended.

#### Sensor connection

