

# 1-10V potentiometer / PWM Dimmable LED Driver - 700mA

## For High Power LED Lighting Source

**PowerPax UK**

### FEATURES:

- Universal Input range from 100V-240V.
- Suitable for High Power LEDs lighting application.
- Screw terminal for safe connection and IP20 for dry location
- Tc Point measured, Max case temperature: 70°C
- Protections: Short-Circuit / Over Heat and Auto-recovery Mode
- Dimming controlled at Secondary side.
- Standard dimmer 1-10V electronic potentiometer (Part No. EC011) wire up to 10pcs dimmable drivers. (EC011 charged additionally)

### Safety Approval:

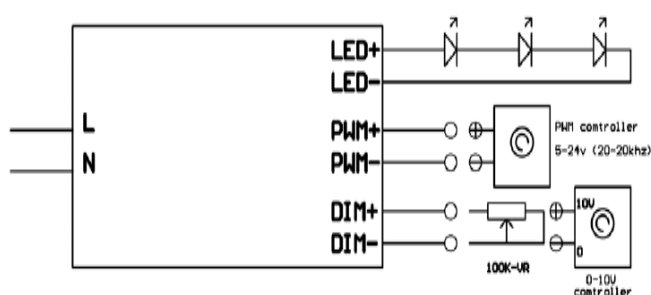


### SPECIFICATION

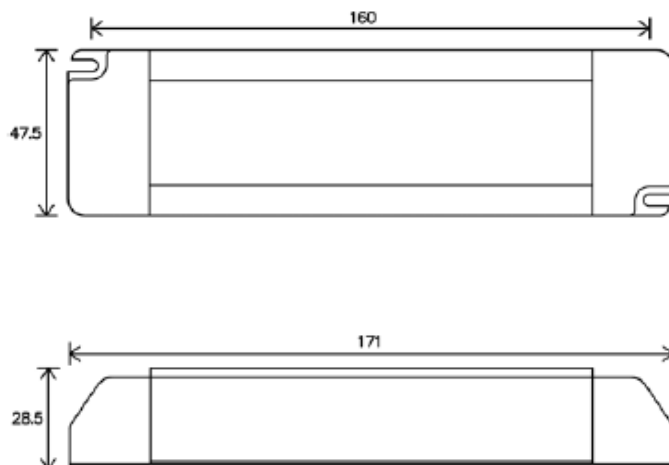
Model No.		PLC7036-18D
Primary	Voltage Range (VAC)	100V-240Vac $\pm 6\%$
	Frequency Range (Hz)	50 Hz / 60 Hz
	AC Current	0.3A@115VAC / 0.15A@230VAC
	Max. Inrush Current	12A
	Leakage Current	$y < 1\text{mA}$ / 240 Vac
Secondary	Voltage Range (VDC)	10-36Vdc
	Rated Current Range (mA)	0-700mA $\pm 6\%$
	Rated Power (W)	25W Max
	Dimming Control	(0-10V) 1-10V electronic potentiometer / PWM Controller 5-24V (20-3KHz)
Protections	Over Load	100~135% rated output power Flicker: Recovers automatically after fault condition has been removed.
	Ambient Temp.	-10°C~+50°C full load .
Environment	Operating Humidity	20% ~ 95% RH non-condensing.
	Storage Temp. / Humidity	-20 ~ +80°C / 10% ~ 95% RH
Safety Approval	Safety Standards	CE EN61347 / EN55015

### Wiring Diagram

### Mechanical Dimension: 171Lx47.5Wx28.5H mm



PLC7036-18 I: Supply up to 25W LEDs



Note 1: Lamps must be wired in series, and total value of Vf should be under rated DC Voltage.

Note 2: Disconnect the mains supply before installing, Do not turn on/off at secondary.

Note 3: Parameter measured at full load 25°C ambient temperature.

Note 4: Two years warranty