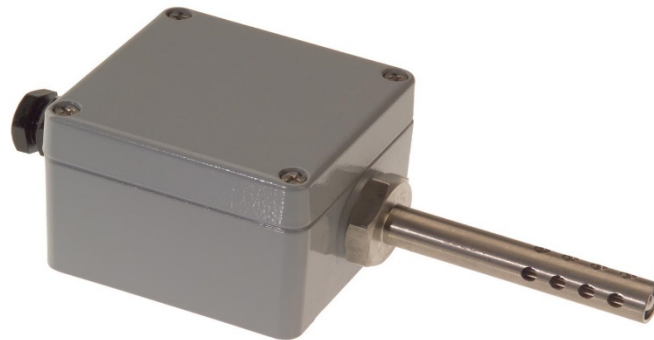


Pt100 Outdoor/Cold Store Temperature Sensors



- Weatherproof IP67 rated wall mounting Pt100 for accurate outdoor air temperature sensing
- Painted Die-Cast Aluminium Housing L80 x W74 x H54mm
- Perforated stainless steel probe, 12.7mm x 75mm
- Surface mounting
- Pt100, class B to IEC 751
- Temperature range -50 to 150°C
- M20 cable entry gland

Single 4 wire element, allowing connection to any Pt100 2, 3 or 4 wire instrument

Specifications

Sensor type:	Pt100 (100 Ohms @ 0°C) to IEC 751, Class B 4 wire single element
Construction:	Housing – Painted Die-Cast Aluminium Probe – 12.7mm diameter x 75mm long 316 stainless steel sheath.
Probe temperature range:	-50°C to +150°C
Cable entry:	M20 Nylon cable entry gland

Sensor Type	No. of Elements	Pt100 Connection	Probe diameter & length (mm)	Manufacturer's Part Number	Rapid Part Number
Pt100	Single	4 wire	12.7 x 75	XE-3673-001	61-3206