



Lens Mounts for 3mm and 5mm LEDs

Specifications:

Material:

Lense: Polycarbonate

Spacer: Nylon (U.L. Listed Materials).

Design:

Standard and low profile lenses with fresnel rings and striated lines. A 5mm Low Profile Lens is available without fresnel rings.

Mounting:

Mounts through front of panel. Mounting holes should be deburred but not chamfered.

3mm (**A, C**) mounts in a 0.171 ± 0.002 (4.34mm) hole on $\frac{1}{4}$ in centers.

Panel thickness for **A** = $\frac{1}{32}$ in to $\frac{1}{16}$ in;

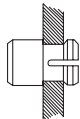
C = $\frac{1}{16}$ in to $\frac{1}{8}$ in.

5mm (**B, D**) mounts in a 0.250 ± 0.002 (6.35mm) hole on $\frac{3}{8}$ in centers.

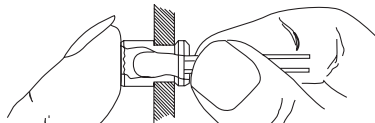
Panel thickness for **B** = $\frac{1}{16}$ in to $\frac{1}{8}$ in; **D** = $\frac{1}{32}$ in to $\frac{1}{4}$ in; for panels less than $\frac{3}{16}$ in, use **E** spacer.



Simple 2-step installation:

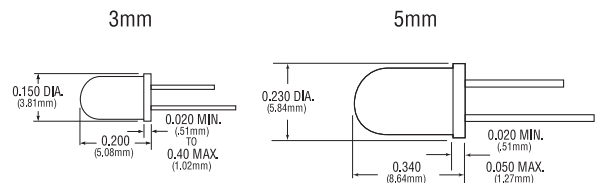


1. Snap the mounting into panel hole.



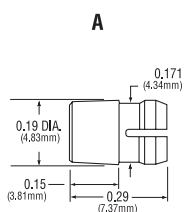
2. While holding the mounting tight to the panel with your finger, insert the LED into the mounting from the back.

Recommended LEDs

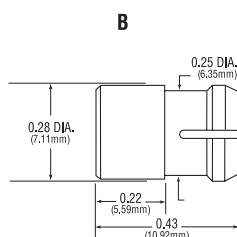


Outline drawings:

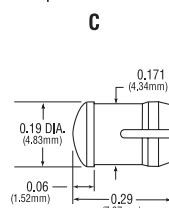
Standard lens 3mm



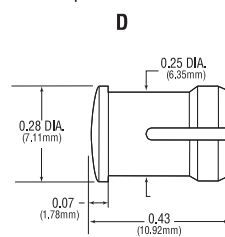
Standard lens 5mm



Low profile lens 3mm



Low profile lens 5mm



Retaining ring

