

# ALLBOT®

## EXPANDABLE ROBOT SYSTEM

### FOUR LEGGED ALLBOT

ORDER CODE: VR408

The ALLBOT is a modular robot system with Arduino compatible robot shields. Build and enhance the robot, learn how to program, use the app and have fun!

#### Features:

- all necessary plastic parts
- 8 X 9G servo motors
- a servo motor connector shield (VRSSM)
- a battery shield (VRBS1)
- includes different feet
- VR001 infrared transmitter with app for smartphone or tablet (Android® or iOS®)

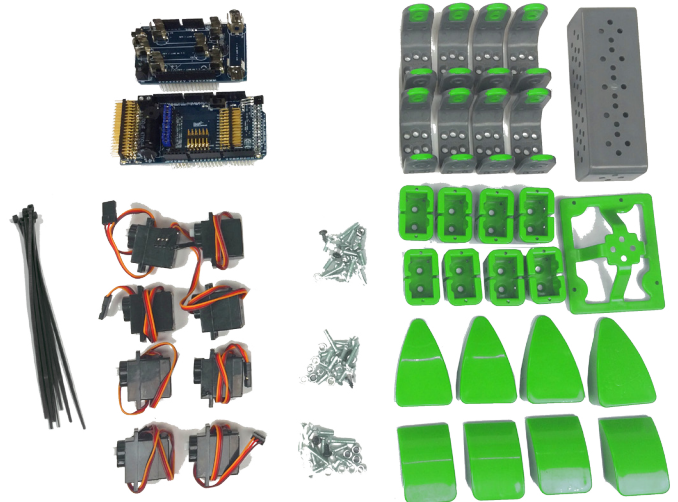
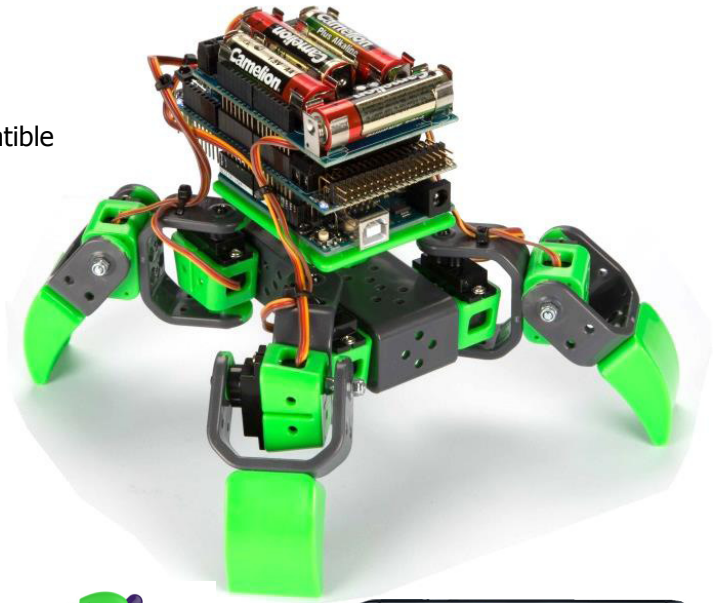
#### Specifications:

Servo motor connector shield (VRSSM):

- compatible with Arduino UNO and MEGA
- Arduino UNO can drive max. 12 servo motors
- Arduino MEGA can drive max. 36 servo motors
- IR receiver
- beeper
- power indicator LEDs

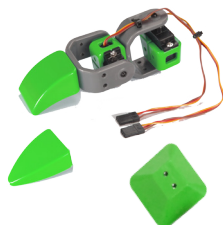
Battery shield (VRBS1):

- power supply: 12 V booster for Arduino board (4 x AA Batteries, ALKALINE or NiMH recommended but not incl.)
- ON-OFF switch



#### ALLBOT options:

**VR012: 2 servo leg**



**VR013: 3 servo leg**

