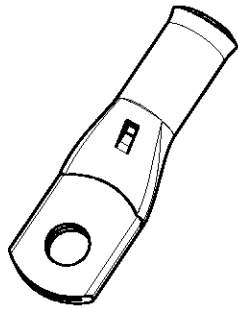
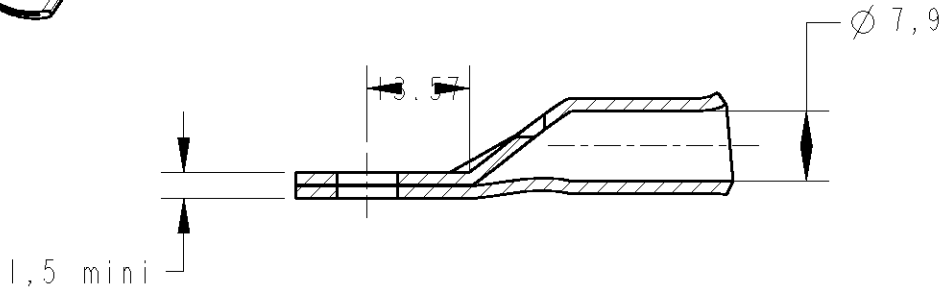


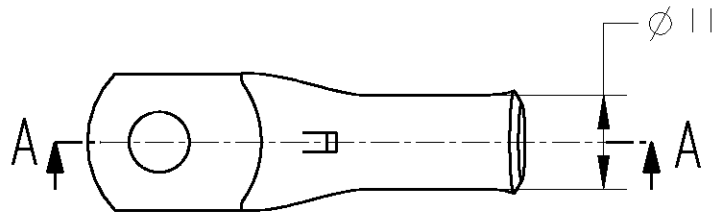
LOC	DIST	REVISIONS				
P	LTR REV	DESCRIPTION MODIFICATIONS	DATE	DWN DESS.	APVD APP.	
FH	2					
	D	PASSAGE SOUS PROE - A ET R 09PFG0180c	15DEC00	DL	JT	
	E	EQ00-0350-05	22JUL05	RB	GJ	



COUPE A-A



Inspection hole



(L)	C	B	Ø A	DESCRIPTION	PART NUMBER
39	7	15	6,4	XCT 35-6	710027-1
46	11	17	8,3	XCT 35-8	710027-2
46	11	17	10,3	XCT 35-10	710036-3
46	11	17	12,8	XCT 35-12	710036-4

- 1 - MATERIAL = TINNED COPPER
- 2 - Marking in depth: logo-section-hole-Made in France +
- 3 - CABLE SECTION = 2AWG or 35mm²
- 4 - GROOVE E35Cu OR DIE (Punch 17P50+ Die 17M35)

TOLERANCES UNLESS OTHERWISE SPECIFIED -
 TOLERANCES NON SPECIFIEES: -

DIMENSIONS: mm TOLERANCES UNLESS OTHERWISE SPECIFIED / TOLERANCES NON SPECIFIEES (SUIV. NB DE DECIMALES): 0 PLC / DEC: ±0 1 PLC / DEC: ±0 2 PLC / DEC: ±0 3 PLC / DEC: ±0 4 PLC / DEC: ±0 ANGLES ±-	DWN / DESSINE D. LEGUY 15DEC00 CHK / VERIFIE P. VINCENT - APVD / APPROUVE JC. THIAUD - PRODUCT SPEC SPEC. PRODUIT - APPLICATION SPEC SPEC. APPLICATION -	MATERIAL MATIERE CUIVRE FINISH FINITION ETAME	AMP SIMEL 21220 Gevrey-Chambertin, FRANCE
	WEIGHT MASSE APPROX.	NAME TITRE XCT 35-..	SIZE FORMAT A4 CAGE CODE 00779 DRAWING NO No PLAN C=710027
CUSTOMER DRAWING / PLAN CLIENT		UNIQUEMENT POUR REFERENCE	SCALE ECHELLE - / - SHEET FEUILLE 1 OF DE 1 REV E