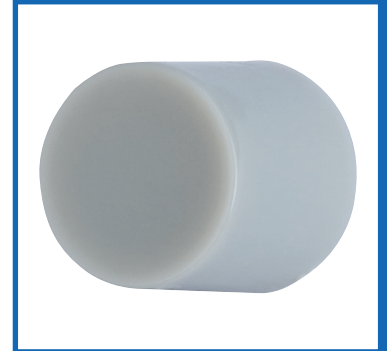


Actuator Knobs



DESCRIPTION

A grey moulded control knob with concave end.

DISTINCTIVE FEATURES

- High quality moulding
- Polyamide plastic
- Grey colour
- Concave end

APPLICATIONS

Suitable for use with R-TECH 78-0387 PCB Power Switch Locking DPST.

Grey

Concave

PA66





MATERIALS

Actuator knob	Polyamide plastic (PA66)
---------------	--------------------------



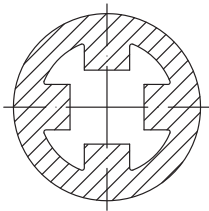
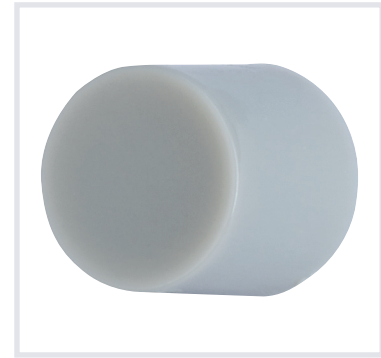
GENERAL SPECIFICATION

Type	Actuator knob
Actuator colour	Grey
RoHS Compliant	Yes
For use with	Suitable for use with R-TECH 78-0387 PCB Power Switch Locking DPST

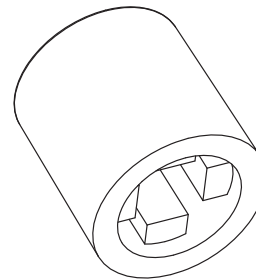
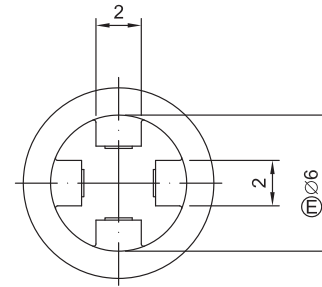
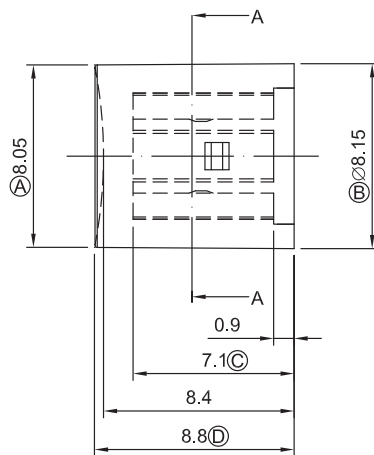


DIMENSIONS/DRAWINGS

Units	mm - unless stated otherwise
Overall dimensions (mm)	8.15 x 8.8
Weight (grams)	0.4



A-A SECTION



OPTIONS (MOQ may apply)

Colour	Can be custom made in any colour required. MOQ will apply
--------	---



PART NUMBER TABLE

Part Number	UNSPSC	EAN	Country Of Origin
78-0388	31162801	5053556003181	China

R-TECH

Tried & trusted technology

Important Notice: This data sheet and its contents (the "Information") belong to Rapid Electronics Limited or are licensed to it. No licence is granted for the use of it other than for information purposes in connection with the products to which it relates. No licence of any intellectual property rights is granted. The Information is subject to change without notice and replaces all data sheets previously supplied. The Information supplied is believed to be accurate but Rapid Electronics Limited assumes no responsibility for its accuracy or completeness, any error in or omission from it or for any use made of it. Users of this data sheet should check for themselves the Information and the suitability of the products for their purpose and not make any assumptions based on information included or omitted. Liability for loss or damage resulting from any reliance on the Information or use of it (including liability resulting from negligence or where Rapid Electronics Limited were aware of the possibility of such loss or damage arising) is excluded. This will not operate to limit or restrict Rapid Electronics Limited's liability for death or personal injury resulting from its negligence.