

Proximity Switches

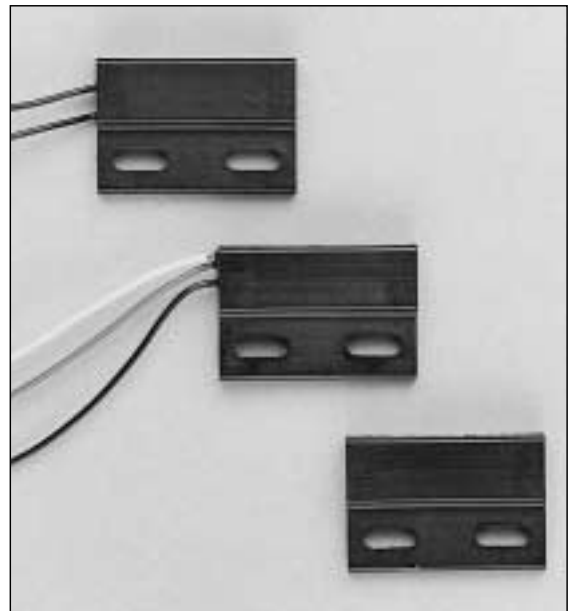
Order code	Manufacturer code	Description
78-2012	n/a	POSITION SENSOR PS1011
78-2014	n/a	MAGNET PM1

Proximity Switches	Page 1 of 3
The enclosed information is believed to be correct, Information may change 'without notice' due to product improvement. Users should ensure that the product is suitable for their use. E. & O. E.	Revision A 04/07/2003



PS1/PM1 & PS2/PM2 SERIES

POSITION SENSORS



DESIGN FEATURES

- Normally open, normally closed or changeover contact options
- UL listed models, PS2/PM2 range, file no.E153493
- Robust potted assembly in glass filled Nylon 6.6 UL 94-HB housing
- Cost effective, easy to install. Termination leads can be left or right handed to suit individual requirements
- Proven reed switch reliability, contact ratings up to 100Vdc, 15watts

TYPICAL APPLICATIONS

- Security switches
- Interlocked switches
- Pulse generation
- Position indicators
- Materials handling
- Hook switches

The Gentech PS1 and PS2 Series of magnetic reed switch position sensors provide reliability and a robust construction suitable for dirty, oily, greasy, wet and similarly harsh environments. Operated by a similarly packaged (PM Series) magnet, the combination is suitable for direct magnet or shunt operation. PS Series position sensors meet a wide variety of application needs in security and safety systems, office equipment, fluid level sensing and management, construction plant, the automotive and many other industries.

Operational Characteristics

Switch Option		01	02	03
Contact Configuration		SPST(NO)	SPST(NC)	SPDT
Contact ratings				
Maximum (resistive loads)	Volts DC	500	130	130
	Volts AC	250	100	100
	Amps	1.0	0.3	0.3
	Watts	15	3	3
Minimum breakdown voltage across contacts	Volts	800	200	200
Initial contact resistance	Ohms	0.15	0.2	0.2

The above contact ratings are for resistive loads. For inductive, capacitive and tungsten filament lamp loads refer to the circuit protection notebook.

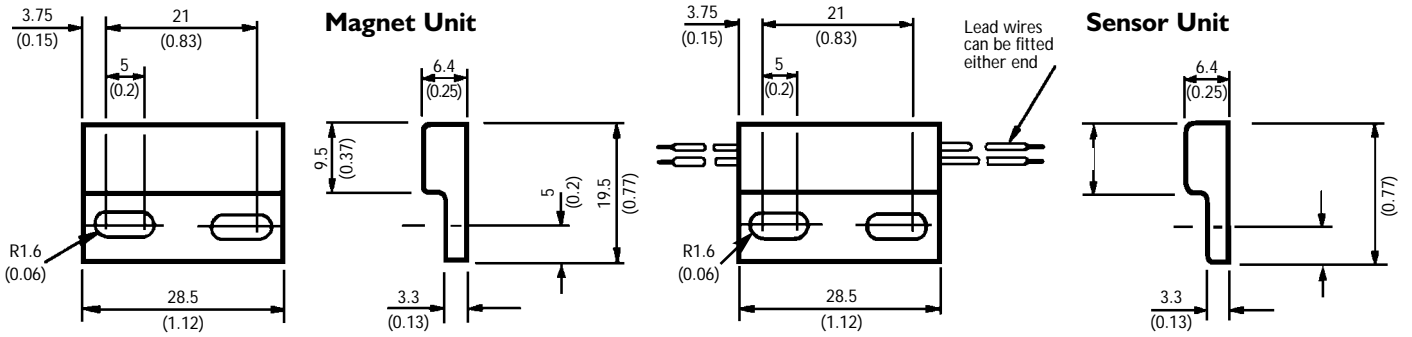
Environmental Specifications

Temperature Range	Operate and Storage
Magnet and Sensor	-30° to +105°C
Cable insulation	-30° to +70°C

Electrical Connections

PS1 Range Switch Option 01 & 02 are fitted with 2 x 0.5 metre of 24AWG, 7/0.2mm stranded, with PVC insulation.
 PS1 Range Switch Option 03 is fitted with 3 x 0.5 metre of 24AWG, 7/0.2mm stranded, with PVC insulation.
 PS2 Range Switch Option 01 & 02 are fitted with 2 x 0.5 metre of 20AWG stranded, UL1015 with orange PVC insulation.
 PS2 Range Switch Option 03 is fitted with 3 x 0.5 metre of 24AWG stranded, UL1569 with black, yellow & blue PVC insulation.

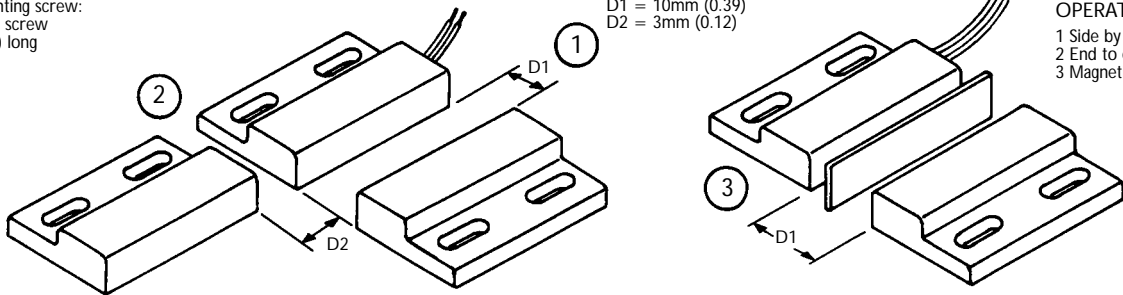
PS1/PM1 & PS2/PM2 (UL LISTING)



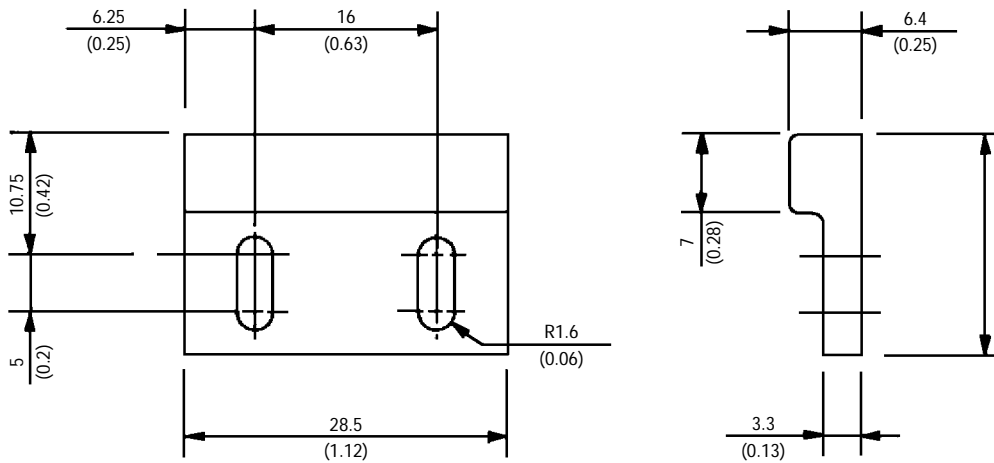
Recommended mounting screw:
Pan head self tapping screw
No.4 x 9.5mm (0.37) long

Maximum operate distance (all models)
D1 = 10mm (0.39)
D2 = 3mm (0.12)

MODES OF OPERATION
1 Side by side
2 End to end
3 Magnetic shunt



PMI02 MAGNET



Installation

Please contact Sales at Gentech for installation instructions (Ref. FI 1000-R1)

Applications

Please contact Sales at Gentech for applications relating to this product group.



GENTECH INTERNATIONAL LTD