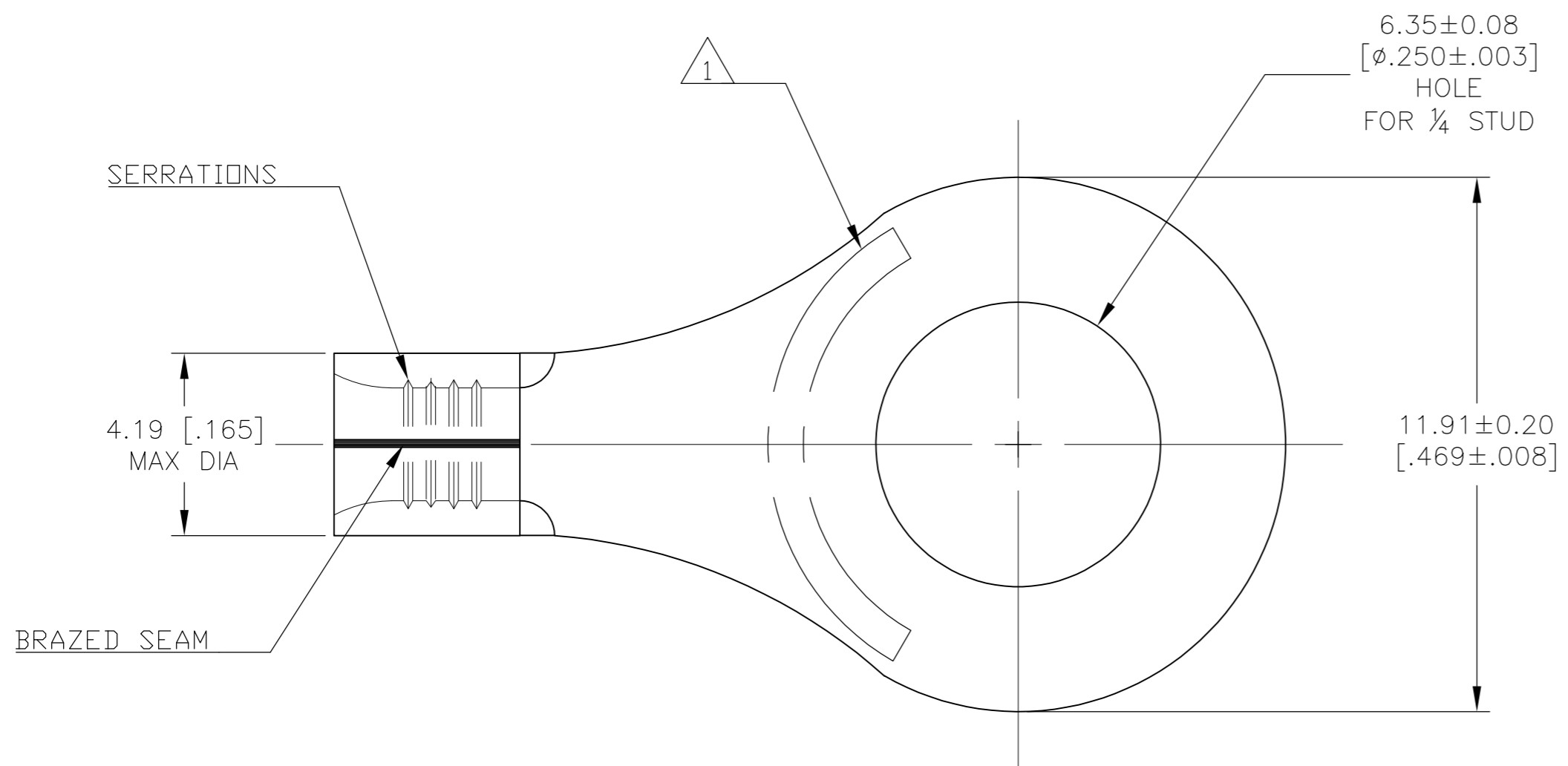


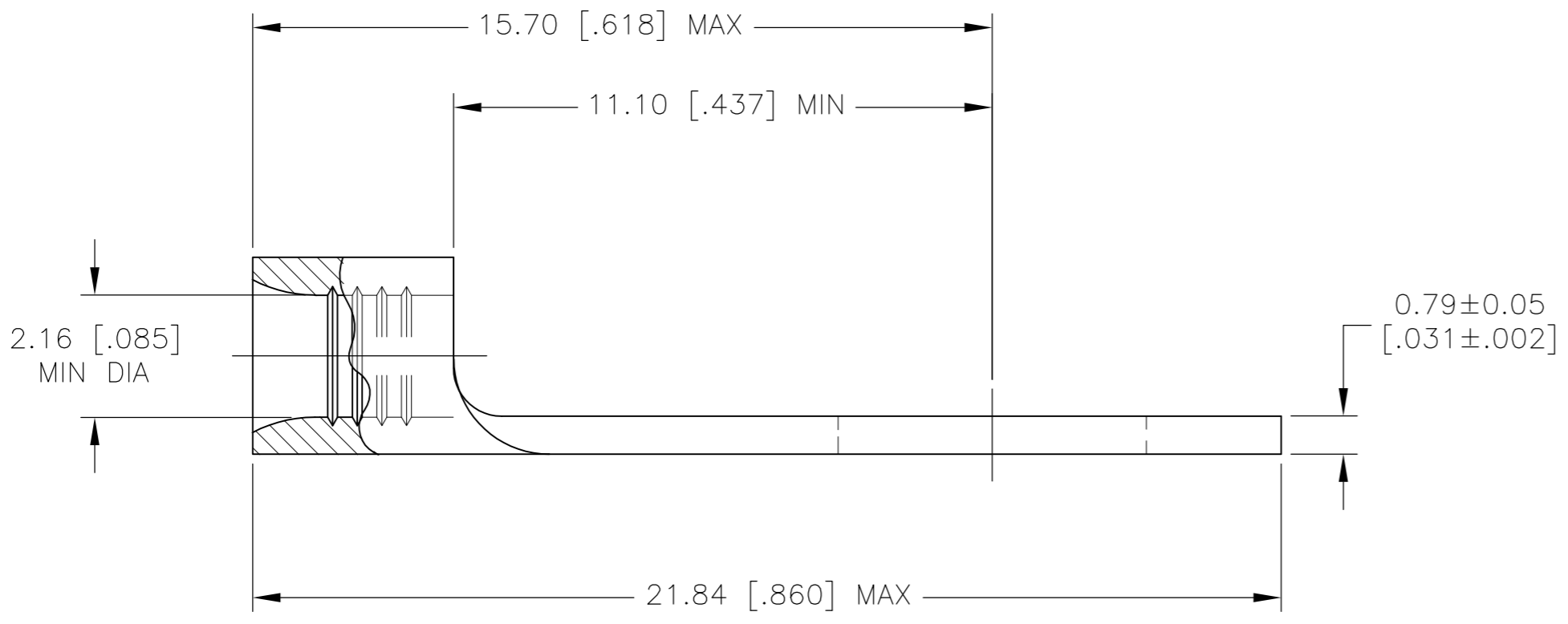
THIS DRAWING IS UNPUBLISHED. RELEASED FOR PUBLICATION
 © COPYRIGHT BY TYCO ELECTRONICS CORPORATION. ALL INTERNATIONAL RIGHTS RESERVED.

| LOC | DIST | REVISIONS | | | |
|-----|------|-------------|-------|---------|-------|
| P | LTR | DESCRIPTION | DATE | DWN | APVD |
| G | 14 | B | DRAWN | 01MAR10 | JR TM |



| | | |
|--------------------------------|--------------------------------|--------------------------------|
| AMP WIRE RANGE | Listed FILE E13288 | LR7189 Certified |
| 16-14 AWG SOLID OR STRANDED | 16-14 AWG SOLID OR STRANDED | 16-14 AWG SOLID OR STRANDED |

- 1 STAMP AMP 16-14* APPROX AS SHOWN
- 2 0.00254 [.000100] MIN TIN PER ASTM B-545.
- 3 SUPERSEDED BY 130130



| FINISH | QTY | PACKAGING TYPE | PART NO. |
|--------|------|------------------|------------|
| 2 | 100 | LOOSE PIECE, BOX | 8-130130-1 |
| 2 | 5000 | ON TAPE | 2-130130-1 |
| 2 | 1000 | LOOSE PIECE | 130130 |

| | | | | | | | | | | | |
|--|--|---|--|---|--|----------------------------------|--|---|--|--|--|
| AMP INCORPORATED CUSTOMER SERVICE SYSTEMS | | MAX RECOMMENDED OPERATING TEMPERATURE: 105°C [221° F] | | THIS DRAWING IS A CONTROLLED DOCUMENT. | | DWN JR RUTH 01MAR10 | | Tyco Electronics Corporation Harrisburg, PA 17105-3608 | | | |
| FOR ADDITIONAL PRODUCT INFORMATION OR COPIES OF DRAWINGS AND TECHNICAL DOCUMENTS 1-800-522-6752 | | VOLTAGE RATING: 600V MAX (1000V FIXTURE OR SIGN) | | DIMENSIONS: MM [INCHES] | | CHK TOM MICHELUTTI 01MAR10 | | | | | |
| FOR APPLICATION TOOLING ASSISTANCE CENTER 1-800-722-1111 | | CIRCULAR MIL AREA: 1.04-2.62mm² [2,050-5,180] SOLID OR STRANDED | | TOLERANCES UNLESS OTHERWISE SPECIFIED: 0 PLC ± - 1 PLC ± - 2 PLC ± 0.20 [.008] 3 PLC ± - 4 PLC ± - ANGLES ± - | | APVD TOM MICHELUTTI 01MAR10 | | NAME TERMINAL, RING TONGUE, SOLISTRAND | | | |
| FOR ORDER ENTRY 1-800-526-5142 | | THIS DRAWING IS A CONTROLLED DOCUMENT FOR AMP INCORPORATED. IT IS SUBJECT TO CHANGE AND THE CONTROLLING ENGINEERING ORGANIZATION SHOULD BE CONTACTED FOR THE LATEST REVISION. | | MATERIAL COPPER PER ASTM B-152 ANNEALED | | PRODUCT SPEC APPLICATION SPEC | | | | SIZE CAGE CODE DRAWING NO RESTRICTED TO A2 00779 C=130130 - | |
| | | | | | | FINISH SEE TABLE | | WEIGHT - | | SCALE 8:1 SHEET 1 of 1 REV B | |
| | | | | | | CUSTOMER DRAWING | | | | | |

130130

Ring Tongue Terminals

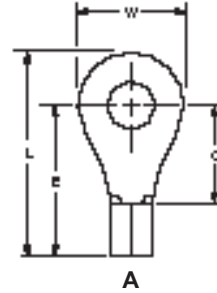
Wire Size Range

AWG 26 to 16,
CMA 202 to 3,260
[0.1 to 1.65 mm²]

Material

Terminal Body — Copper per
ASTM B-152

Plating — Tin per MIL-T-10727



| Wire Size Circular Mills [mm ²] | Stud Size | Style | Dimensions | | | | Material Thickness Max. | Wire Barrel I.D. Min. | | Part Numbers | |
|---|--------------|---------------|---------------|---------------|--------------|--------------|-------------------------------|-----------------------|----------------------|----------------------|--------------------|
| | | | L Max. | E Max. | C Min. | W | | Solistrand | Budget | Solistrand | Budget |
| 26-22 202-810 [0.1-0.41] | 0 | A | .329 8.36 | .256 6.50 | .121 3.07 | .140 3.56 | .020 0.51 | — | .035 0.89 | — | 31423 |
| | | A | .329 8.36 | .256 6.50 | .121 3.07 | .140 3.56 | .020 0.51 | — | .035 0.89 | — | 31425 2-31425-2 |
| | 2 M2 | A | .450 11.43 | .346 8.79 | .211 5.36 | .203 5.16 | .020 0.51 | — | .035 0.89 | — | 33695 |
| | | A | .419 10.64 | .346 8.79 | .211 5.36 | .140 3.56 | .020 0.51 | .031 0.79 | .035 0.89 | 50334* | 322771 |
| | 4 | A | .450 11.43 | .346 8.79 | .211 5.36 | .203 5.16 | .020 0.51 | — | .035 0.89 | — | 31428 |
| | | A | .450 11.43 | .346 8.79 | .211 5.36 | .203 5.16 | .020 0.51 | — | .035 0.89 | — | 31430 |
| | 6 M3.5 | A | .544 13.82 | .416 10.57 | .281 7.14 | .250 6.35 | .020 0.51 | .031 0.79 | .035 0.89 | 331401 1-331401-1 | 32858 |
| | | A | .544 13.82 | .416 10.57 | .281 7.14 | .250 6.35 | .020 0.51 | — | .035 0.89 | — | 32859 |
| | 8 | A | .544 13.82 | .416 10.57 | .281 7.14 | .250 6.35 | .020 0.51 | — | .035 0.89 | — | 32860 |
| | | A | .449 11.40 | .337 8.56 | .156 3.96 | .218 5.54 | .033 0.84 | — | .065 1.65 | — | 31087 |
| | 1 | A | .449 11.40 | .337 8.56 | .156 3.96 | .218 5.54 | .033 0.84 | — | .065 1.65 | — | 31088 |
| | | A | .446 11.33 | .353 8.97 | .172 4.37 | .182 4.62 | .033 0.84 | .061 1.55 | .065 1.65 | 34103 2-34103-1 | 31088 |
| 2 M2 | A | .446 11.33 | .353 8.97 | .172 4.37 | .182 4.62 | .033 0.84 | .061 1.55 | .065 1.65 | 322927 | 320677 | |
| | A | .449 11.40 | .337 8.56 | .156 3.96 | .218 5.54 | .033 0.84 | .061 1.55 | .065 1.65 | 34104* 2-34104-6 | 31089 3-31089-6 | |
| 4 | A | .446 11.33 | .353 8.97 | .172 4.37 | .182 4.62 | .033 0.84 | .061 1.55 | .065 1.65 | 36467* | 36189 2-326850-1 | |
| | A | .621 15.77 | .462 11.73 | .281 7.14 | .312 7.92 | .033 0.84 | .061 1.55 | .065 1.65 | 323096 2-323096-2 | 322418 | |
| 5 M3 | A | .449 11.40 | .337 8.56 | .156 3.96 | .218 5.54 | .033 0.84 | — | .065 1.65 | — | 31090 2-31090-1 | |
| | A | .449 11.40 | .337 8.56 | .156 3.96 | .218 5.54 | .033 0.84 | .061 1.55 | .065 1.65 | 34105* 2-34105-2 | 31091 | |
| 6 M3.5 | A | .528 13.41 | .416 10.57 | .281 7.14 | .250 6.35 | .033 0.84 | .061 1.55 | .065 1.65 | 34194 | 31101 | |
| | A | .574 14.58 | .436 11.07 | .250 6.35 | .281 7.14 | .033 0.84 | .061 1.55 | .065 1.65 | 34107* 2-34107-2 | 31264 | |
| 8 M4 | A | .621 15.77 | .462 11.73 | .281 7.14 | .312 7.92 | .033 0.84 | .061 1.55 | .065 1.65 | 34110* 2-34110-3 | 30691* 1-30691-1 | |
| | A | .653 16.59 | .478 12.14 | .297 7.54 | .344 8.74 | .033 0.84 | — | .065 1.65 | — | 32822 | |
| 8 M4 | A | .621 15.77 | .462 11.73 | .281 7.14 | .312 7.92 | .033 0.84 | .061 1.55 | .065 1.65 | 34111* 2-34111-3 | 30692 | |
| | A | .574 14.58 | .436 11.07 | .250 6.35 | .281 7.14 | .033 0.84 | .061 1.55 | .065 1.65 | 34108* 2-34108-2 | 31265* | |
| 8 M4 | A | .653 16.59 | .478 12.14 | .297 7.54 | .344 8.74 | .033 0.84 | .061 1.55 | .065 1.65 | 323086 | 32823 | |

Note: Part numbers are shown as loose piece over tape mounted product.
*Part numbers are available in small quantity packages.