

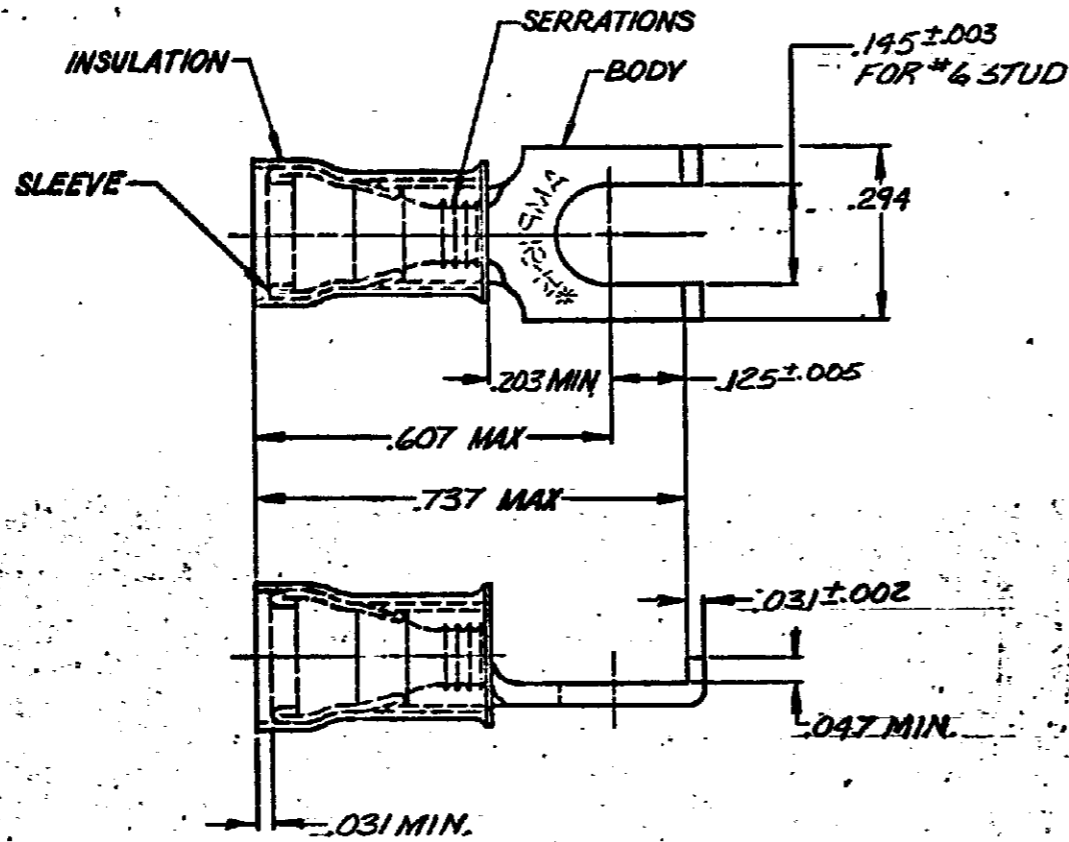
DRAWING MADE IN THIRD ANGLE PROJECTION

THIS DRAWING IS UNPUBLISHED. RELEASED FOR PUBLICATION

© COPYRIGHT

LOC 6 DIST 14

REVISIONS						
P	F	ZONE	LTR	DESCRIPTION	DATE	APPROVED
			P1	REVISED PER ECO-11-005294	11APR11	HMR



QTY	PACKAGE TYPE	PART NO.	
—	LOOSE PIECE	320861	
5,000	ON TAPE, REEL	2-	-1
—	LOOSE PIECE	2-	-2
5,000	ON TAPE, REEL	2-	-3
1,000	ON TAPE, LG. BOX	2-	5
100	LOOSE PC, BOX	8-320861-	1

OBsolete

WIRE INS. DIA.	MATERIAL AND FINISH	PART NO
.115 TO .170	BODY: COPPER QQ-C-576 TIN PL MIL-T-10727	8-320861-1
.105 TO .150	SLEEVE: COPPER QQ-C-576 TIN PL MIL-T-10727	2- -3
.115 TO .170	INSULATION: NYLON COLOR: BLUE	2- -2
.115 TO .170		2- -1
		320861

UNLESS OTHERWISE SPECIFIED DIMENSIONS ARE IN INCHES. TOLERANCES ON: DECIMALS: .008 ANGLES: 2	CONTRACT NO	TE Connectivity	
	DR: P. Fortney 7-29-85	NAME: TERMINAL, PIDG, 11YLO11 FLANGED SPADE 16-14	
MATERIAL: SEE TABLE	APPD: [Signature]	SIZE: B	FSCM NO: 00779
FINISH: SEE TABLE	APPD: [Signature]	DRAWING NO: 320861	SHEET: —
	DSGN APPD	SCALE: NTS	
	OTHER APPD		

CUSTOMER DRAWING