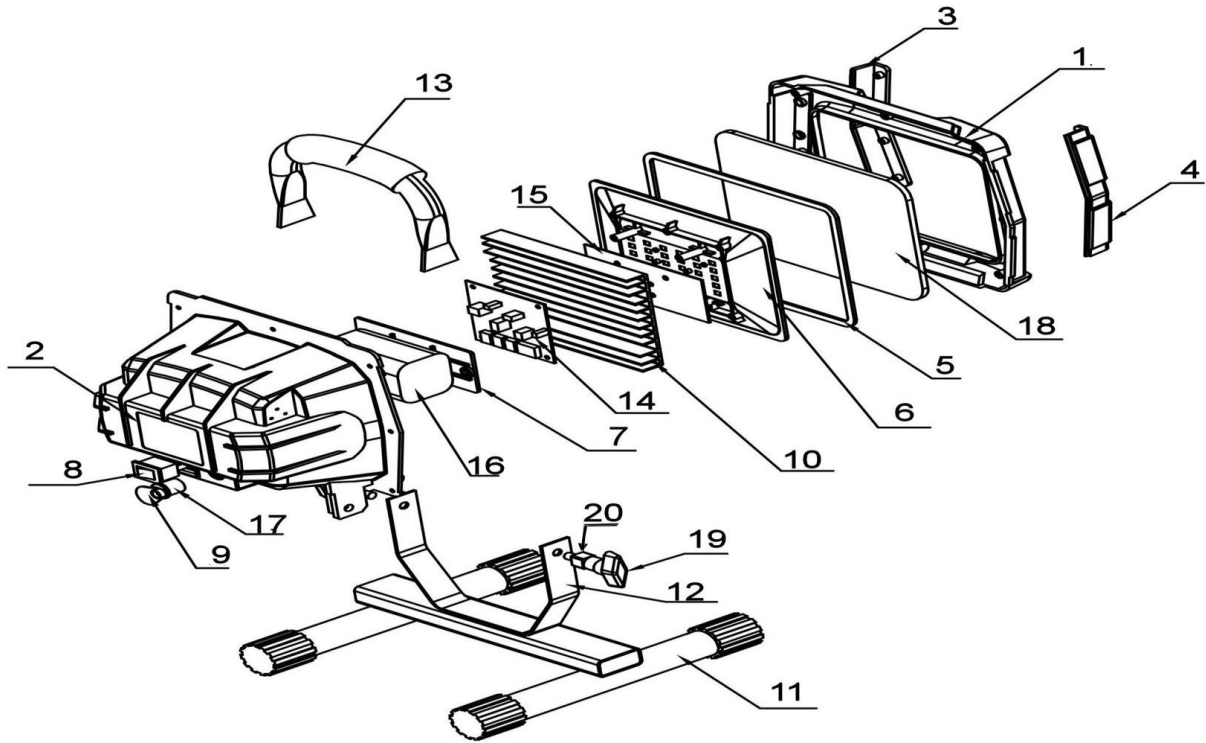




Parts Information:
**Rechargeable Portable Floodlight 30SMD
 LED Lithium-ion
 Model No: LED109C.V3**



Item	Part No.	Description
1	LED109C.V2-01	FRONT HOUSING
2	LED109C.V2-02	BACK HOUSING
3	LED109C.V3-03	SIDE STRIP, LEFT SIDE
4	LED109C.V3-04	SIDE STRIP, RIGHT SIDE
5	LED109C.V2-03	SEALING RING
6	LED109C.V3-06	LED REFLECTOR
7	LED109C.V3-07	CIRCUIT BOARD SUPPORT
8	LED109C.V3-08	SWITCH WITH COVER
9	LED109C.V3-09	CHARGING SOCKET COVER
10	LED109C.V3-10	ALUMINIUM COVER
11	LED109C.15	STEEL STAND "H"

Item	Part No.	Description
12	LED109C.14	STEEL BASE "U"
13	LED109C.17	HANDLE
14	LED109C.V3-14	CIRCUIT BOARD
15	LED109C.V3-15	LED CIRCUIT BOARD
16	LED109C.V3-16	BATTERY LI-ION 7.4V 4Ah
17	LED109C.V3-17	CHARGING SOCKET
18	LED109C.V2-04	TEMPERED GLASS
19	LED109C.V3-19	HAND BOLT
20	LED109C.V3-20	HAND NUT
--	LED108C.03A	MAIN CHARGER BS 12V 500mA (SINGLE PIN) (NOT SHOWN)
--	LED109C.V3-22	CAR CHARGER 12V (NOT SHOWN)

NOTE: It is our policy to continually improve products and as such we reserve the right to alter data, specifications and component parts without prior notice.

IMPORTANT: No liability is accepted for incorrect use of product.

WARRANTY: Guarantee is 12 months from purchase date, proof of which will be required for any claim.

Sealey Group, Kempson Way, Suffolk Business Park, Bury St Edmunds, Suffolk. IP32 7AR



01284 757500



01284 703534



sales@sealey.co.uk



www.sealey.co.uk