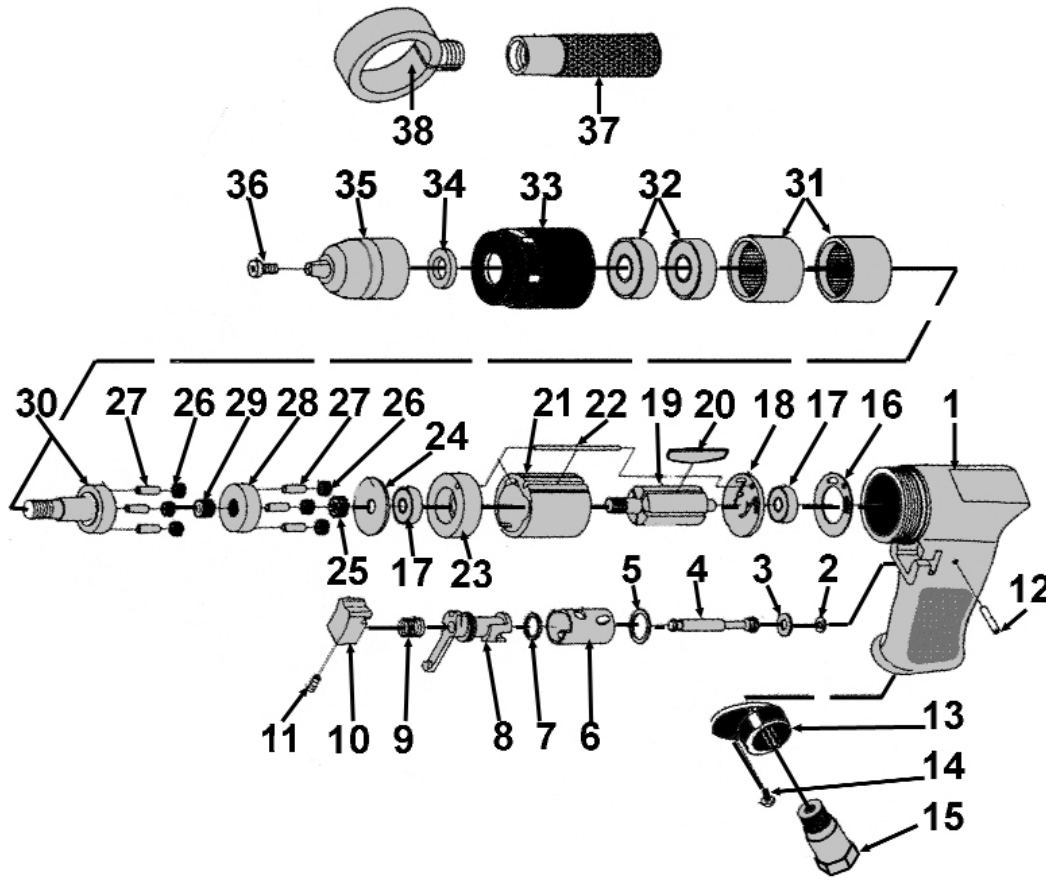


Parts Information:
**Air Drill Ø13mm 700rpm Reversible
 Keyless Chuck
 Model No: SA27.V2**



Item	Part No.	Description
1	SA241.01	HOUSING
2	SA23S.V3-02	O-RING
3	SA23S.V3-03	O-RING
4	SA23S.V3-04	VALVE STEM
5	SA23S.V3-05	O-RING
6	SA241.06	BUSHING
7	SA24.V2-07	O-RING
8	SA241.08	REVERSE LEVER
9	SA23S.V3-07	TRIGGER SPRING
10	SA23S.V3-08	TRIGGER
11	SA23S.V3-09	TRIGGER SCREW
12	SA23S.V3-10	PIN
13	SA23S.V3-11	MUFFLE COVER
14	SA23S.V3-12	SCREW (SO)
15	SA23S.V3-13	AIR INLET
16	SA241.16	REAR GASKET
17	B/626ZZ	BEARING 626ZZ
18	SA241.18	END PLATE
19	SA23S.V3-16	ROTOR
20	SA23S.V3-17	ROTOR BLADE (SINGLE)

Item	Part No.	Description
21	SA241.21	CYLINDER
22	SA241.22	PIN
23	SA241.23	FRONT END PLATE
24	SA23S.V3-21	SEAL RING
25	SA27V2-25	GEAR
26	SA27V2-26	GEAR (SET OF 6)
27	GSA53.21	PIN
28- Jan	SA27V2-28	GEAR PLATE
29	SA27V2-29	GEAR
30	SA27V2-30	WORK SPINDLE
31	SA23S.V3-25	THREAD RING GEAR
32	B/6201ZZ	BEARING 6201ZZ
33	SA27V2-33	CLAMP NUT
34	SA23S.V3-28	CHUCK SPACER
35	GSA27.37	KEYLESS CHUCK 1.5-13mm 3/8-24
36	SA27V2-36	CHUCK SCREW
37	SA27V2-37	HANDLE
38	SA27V2-38	COPPER RING
--	GSA27.37	KEYLESS CHUCK 1.5-13mm 3/8-24

NOTE: It is our policy to continually improve products and as such we reserve the right to alter data, specifications and component parts without prior notice.

IMPORTANT: No liability is accepted for incorrect use of product.

WARRANTY: Guarantee is 12 months from purchase date, proof of which will be required for any claim.