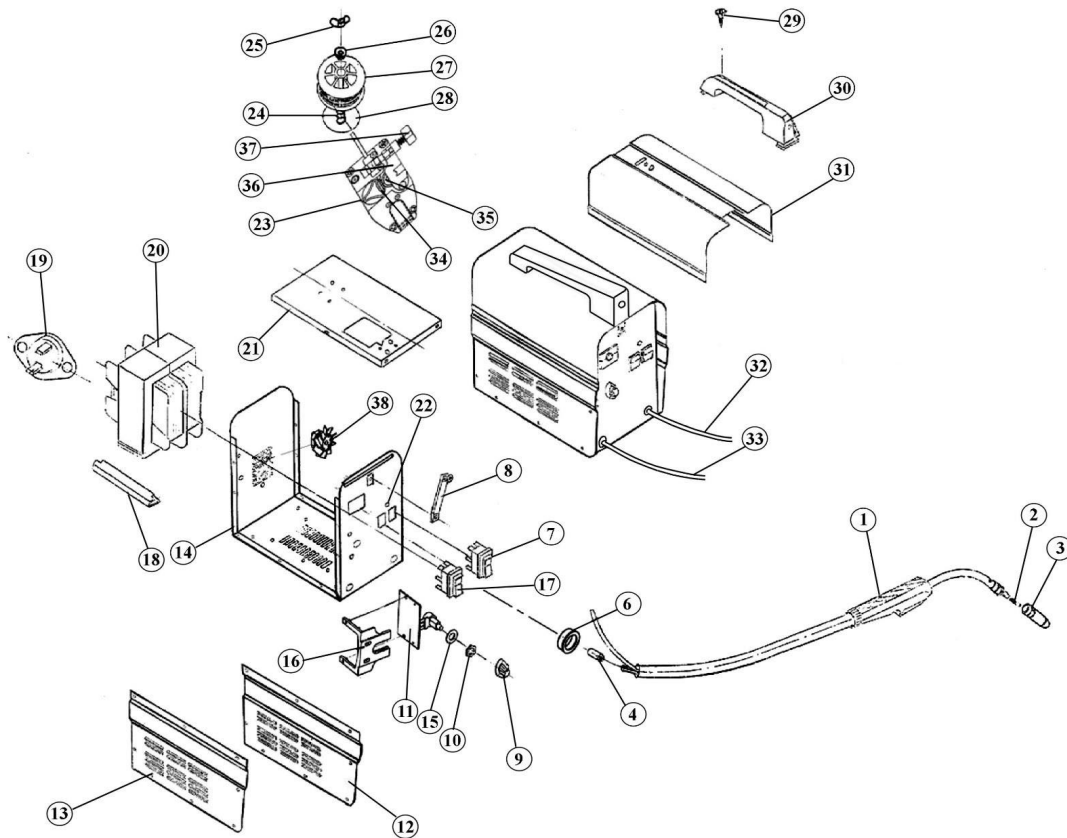


Parts Information:
**Professional No-Gas MIG Welder 100Amp
 230V**
Model No: MIGHTYMIG100.V2



Item	Part No.	Description
1	M/MIG100.01	MIG TORCH GASLESS
2	TG100/2	CONTACT TIP 1mm Pack of 5
3	MIG955	CONICAL NOZZLE TB15 Pack of 3
4	M/MIG100.04	LINER
--	M/MIG170.63	CABLE TIP (NOT SHOWN)
6	M/MIG100.06	COVER
7	M/MIG100.07	ON/OFF SWITCH
8	M/MIG100.08	COVER LOCKING SPRING
9	M/MIG250.20	SPEED CONTROL KNOB
10	M/MIG100.10	NUT
11	M/MIG100.11	SPEED CONTROL CIRCUIT BOARD
12	M/MIG100.12	RIGHT SIDE PANEL
13	M/MIG100.13	LEFT SIDE PANEL
14	M/MIG100.14	BASE FRAME
15	M/MIG100.15	WASHER
16	M/MIG100.16	SUPPORT SHELF OF CIRCUIT BOARD
17	M/MIG150.18	SWITCH
18	M/MIG150.24	TRANSFORMER BRACKET
19	M/MIG100.19	THERMOSTAT 250V 20A
20	M/MIG100.20	TRANSFORMER

Item	Part No.	Description
21	M/MIG100.21	MIDDLE BOARD
22	M/MIG100.22	OVERLOAD INDICATOR LAMP
23	M/MIG150.10	WIRE FEED UNIT
24	M/MIG100.24	REEL SPRING
25	SN6.SW	WING NUT M6 (SINGLE)
26	M/MIG100.26	REEL LOCKING KNOB
27	M/MIG100.27	WIRE REEL(TG100/1)
28	M/MIG150.09	REEL HOLDER
29	M/MIG100.29	RD HEAD S/T SCREW M4.1 X 25
30	M/MIG100.30	HANDLE
31	M/MIG100.31	COVER
32	MC3CX1.5	MAINS CABLE BLK, 3 CORE, 1.5MM2
33	M/MIG100.33	EARTH CABLE
34	M/MIG150.11	WIRE FEED ROLLER
35	B/609-2RS	BEARING 609-2RS
36	M/MIG100.36	WIRE FEED SWING ARM
37	M/MIG100.37	TENSION ADJUSTMENT KNOB
38	M/MIG150.05	FAN
--	TG100/1	FLUX CORED MIG WIRE 0.9kg 0.9mm A5.20 E7 (NOT SHOWN)

NOTE: It is our policy to continually improve products and as such we reserve the right to alter data, specifications and component parts without prior notice.

IMPORTANT: No liability is accepted for incorrect use of product.

WARRANTY: Guarantee is 12 months from purchase date, proof of which will be required for any claim.