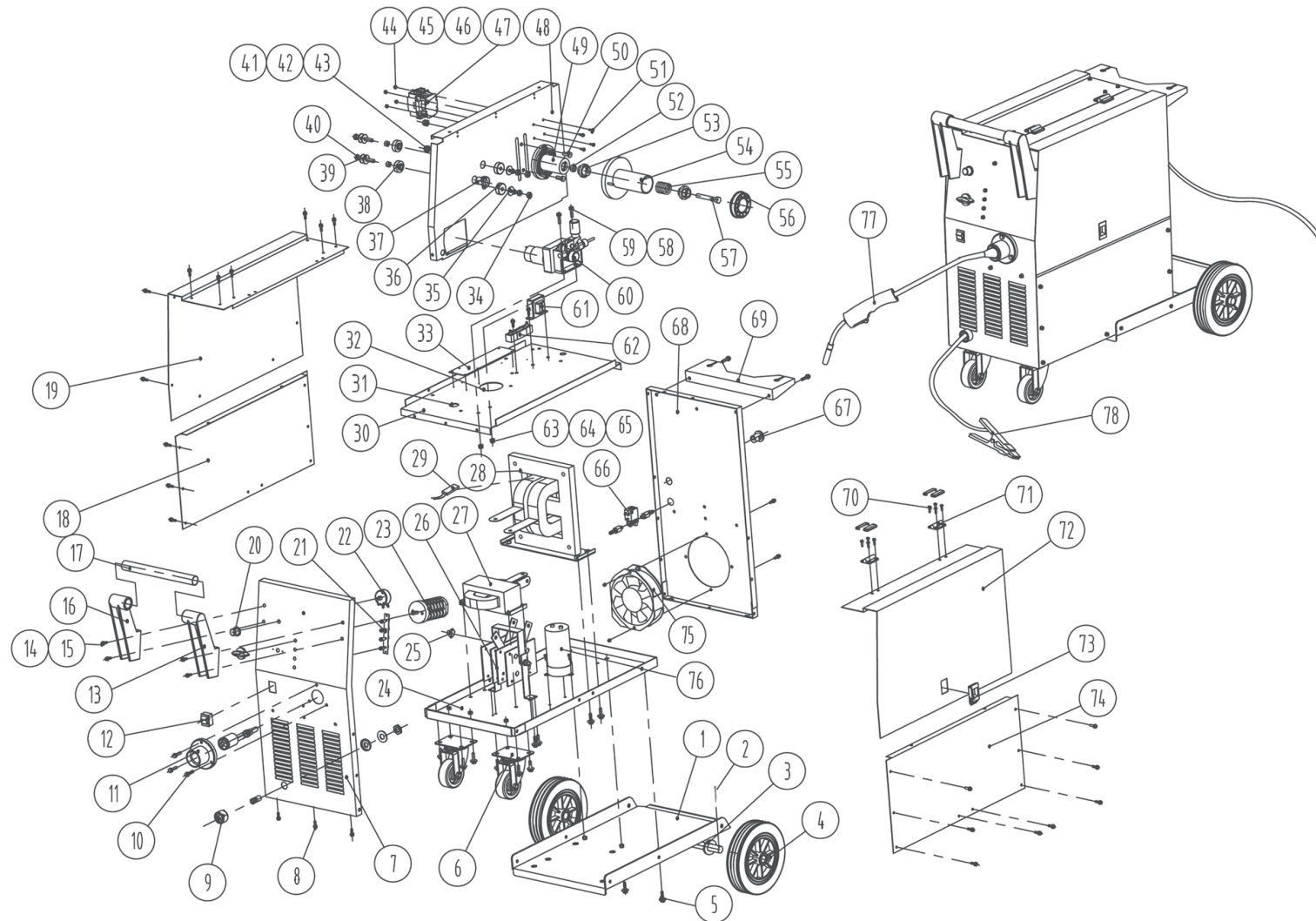




Parts Information:
Professional Gas/No-Gas MIG Welder 250Amp with Euro Torch
Model No: MIGHTYMIG250



NOTE: It is our policy to continually improve products and as such we reserve the right to alter data, specifications and component parts without prior notice.

IMPORTANT: No liability is accepted for incorrect use of product.

WARRANTY: Guarantee is 12 months from purchase date, proof of which will be required for any claim.

Sealey Group, Kempson Way, Suffolk Business Park, Bury St Edmunds, Suffolk. IP32 7AR



01284 757500



01284 703534



sales@sealey.co.uk



www.sealey.co.uk



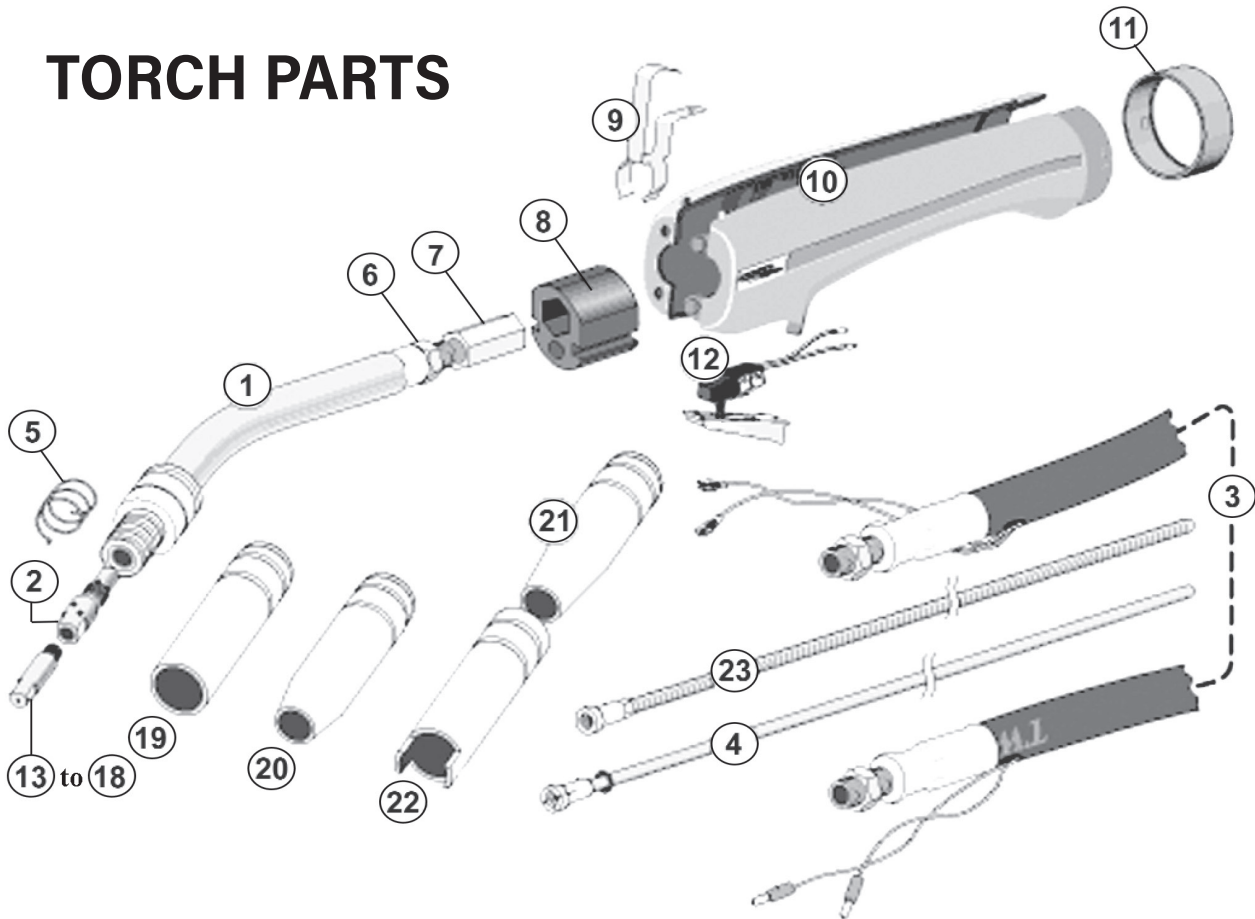
Parts Information:
Professional Gas/No-Gas MIG Welder
250Amp with Euro Torch
Model No: MIGHTYMIG250

Item	Part No.	Description
1	M/MIG250.01	BOTTOM PANEL
2	M/MIG250.02	COTTER PIN
3	FWM20.S	FLAT WASHER M20 SINGLE
4	M/MIG250.04	WHEEL_FIXED (200x19x42)
5	M/MIG250.05	BOLT (M8x16)
6	M/MIG250.06	WHEEL_CASTOR (75x10x32x116)
--	MMIG.CFS	FLANGE HEAD SET SCREW M6x12 SC (CASTOR FIXINGS) (not shown)
7	M/MIG250.07	FRONT PANEL
8	M/MIG250.08	BOLT (M5x12)
9	M/MIG250.09	DINSE SOCKET
10	M/MIG250.10	BOLT (M6x25)
11	M/MIG250.11	TORCH HOLDER ASSEMBLY
--	PMIG3530.29	TORCH HOLDER
12	M/MIG250.12	ON/OFF SWITCH
13	M/MIG250.13	HANDLE SUPPORT (RIGHT)
14	M/MIG250.14	SCREW (M5x25)
15	M/MIG250.15	WASHER
16	M/MIG250.16	HANDLE SUPPORT (LEFT)
17	M/MIG250.17	HANDLE
18	M/MIG250.18	LOWER PANEL, LEFT SIDE
19	M/MIG250.19	UPPER PANEL, LEFT SIDE
20	M/MIG250.20	SPEED CONTROL KNOB
21	M/MIG250.21	INDICATOR
22	M/MIG250.22	WIRE FEED POTENTIOMETER
23	M/MIG250.23	VOLTAGE CONTROL SWITCH
24	M/MIG250.24	BASE FRAME
25	M/MIG250.25	THERMOSTAT 120°C
26	M/MIG250.26	RECTIFIER
27	M/MIG250.27	REACTOR
28	M/MIG250.28	MAIN TRANSFORMER
29	M/MIG250.29	THERMOSTAT
30	M/MIG250.30	MIDDLE PANEL
31	M/MIG250.31	RUBBER RING
32	M/MIG250.32	RUBBER RING
33	M/MIG250.33	CIRCUIT BOARD
34	FN8.S	FLANGE NUT SERRATED M8 ZINC (SINGLE)
35	M/MIG250.35	WASHER
36	M/MIG250.36	INSULATING WASHER
37	M/MIG250.37	CABLE TIP
38	M/MIG250.38	INSULATING WASHER
39	RW825.S	REPAIR WASHER M8x25 (SINGLE)
40	M/MIG190.33	BOLT M8X55
41	M/MIG250.41	SPRING WASHER
42	M/MIG250.42	WASHER
43	SN8.S	STEEL NUT M8 ZINC DIN934 (SINGLE)

Item	Part No.	Description
44	M/MIG250.44	SPRING WASHER
45	M/MIG250.45	WASHER
46	SN4.S	STEEL NUT M4 ZINC DIN934 (SINGLE)
47	M/MIG250.47	CONTACTOR
48	M/MIG250.48	MIDDLE PARTITION PANEL
49	M/MIG250.49	AXLE
50	M/MIG250.50	BOLT (M8x25)
51	M/MIG250.51	SCREW M4x16
52	SN10.S	STEEL NUT M10 ZINC DIN934(SINGLE)
53	M/MIG250.53	PLASTIC KNOB
54	M/MIG250.54	SPOOL HOLDER
55	M/MIG250.55	SPRING
56	M/MIG250.56	RETAINER
57	HHB1080.S	HEX HEAD BOLT M10x80mm SINGLE
58	M/MIG250.58	BOLT M6x25
59	M/MIG250.59	INSULATION WASHER
60	M/MIG250.60	WIRE FEED MOTOR
--	SMIG275.52	WIRE FEEDER ROLLER 0.6-0.8mm (not shown)
--	M/MIG210.24A	WIRE FEED ROLLER (0.9-1.0mm) (not shown)
61	M/MIG250.61	CONTROL TRANSFORMER
62	M/MIG250.62	RESISTANCE
63	M/MIG250.63	SPRING WASHER
64	M/MIG250.64	WASHER
65	SN6.S	STEEL NUT M6 ZINC DIN934 (SINGLE)
66	M/MIG250.66	VALVE ASSEMBLY
67	M/MIG250.67	CABLE GRIP
68	M/MIG250.68	BACK PANEL
69	M/MIG250.69	GAS BOTTLE SUPPORT
70	M/MIG250.70	SCREW M4x8
71	M/MIG250.71	HINGE
72	M/MIG250.72	UPPER PANEL, RIGHT SIDE
73	M/MIG250.73	LATCH
74	M/MIG250.74	LOWER PANEL, RIGHT SIDE
75	M/MIG250.75	FAN
76	M/MIG250.76	CAPACITOR
77	MIG/T25	MIG TORCH 3mtr EURO CONNECTOR TB25
78	M/MIG250.78	CLAMP WITH CABLE
--	REG/MT	MIG GAS REGULATOR 2 GAUGE INDUSTRIAL (not shown)
--	REG/MT.V2-G	GAUGE 4500psi, 50mm OD, BTM FITTING (not shown)
--	REG/MT.V2-G1	GAUGE 16l/min 50mm OD, BTM FITTING (not shown)
--	120/432102	BULL NOSE ADAPTOR (not shown)
--	MIG/GH	HOSE, GAS PER METRE (5mm ID BLACK NYLON HOSE) (not shown)



TORCH PARTS



Item	Part No.	Description
1	120/300060	SWANNECK
2	120/722688	TIP ADAPTOR TR-25 M6 150102 (DIFFUSER)
3	120/258253	CABLE ASSEMBLY 250AMP 3MTR
4	120/302538	RED TEFLON LINER 3MTR (2.0/4.0MM)
5	120/722690	R-25 NOZZLE SPRING 305620
6	120/305401	M10 HALF HEX NUT (BRASS)
7	120/305400	HEXAGONAL FITTING M10X1X26MM
8	120/305500	PLASTIC BODY
9	120/306270	SUSPENSION HOOK
10	120/306000	DWM-HANDLE (3 PARTS) WITHOUT SWITCH
11	120/306120	LOCKING NUT
12	120/306130	BLADE SWITCH

Item	Part No.	Description
13	120/722415	CONTACT TIP TR-15 M6-06-0.6mm
14	120/722552	CONTACT TIP TR-25 M6-08-1.0A 100221
15	120/722553	CONTACT TIP TR-25 M6-08-1.2A 100223
16	120/722680	CONTACT TIP TR-25 M6-08-0.8 100202
17	120/722681	CONTACT TIP TR-25 M6-08-1.0 100206
18	120/722682	CONTACT TIP TR-25 M6-08-1.2 100208
19	120/722684	CYLINDRICAL NOZZLE TB25/TB36 Single
20	120/722685	CONICAL NOZZLE TB25/36 Single
21	120/722686	THIN HEADED NOZZLE TB25/36 Single
22	120/722687	SPOT WELDING NOZZLE TB25/36 Single 20047
23	120/722689	LINER,T, 1.0-1.2mm 3mt STEEL

NOTE: It is our policy to continually improve products and as such we reserve the right to alter data, specifications and component parts without prior notice.

IMPORTANT: No liability is accepted for incorrect use of product.

WARRANTY: Guarantee is 12 months from purchase date, proof of which will be required for any claim.