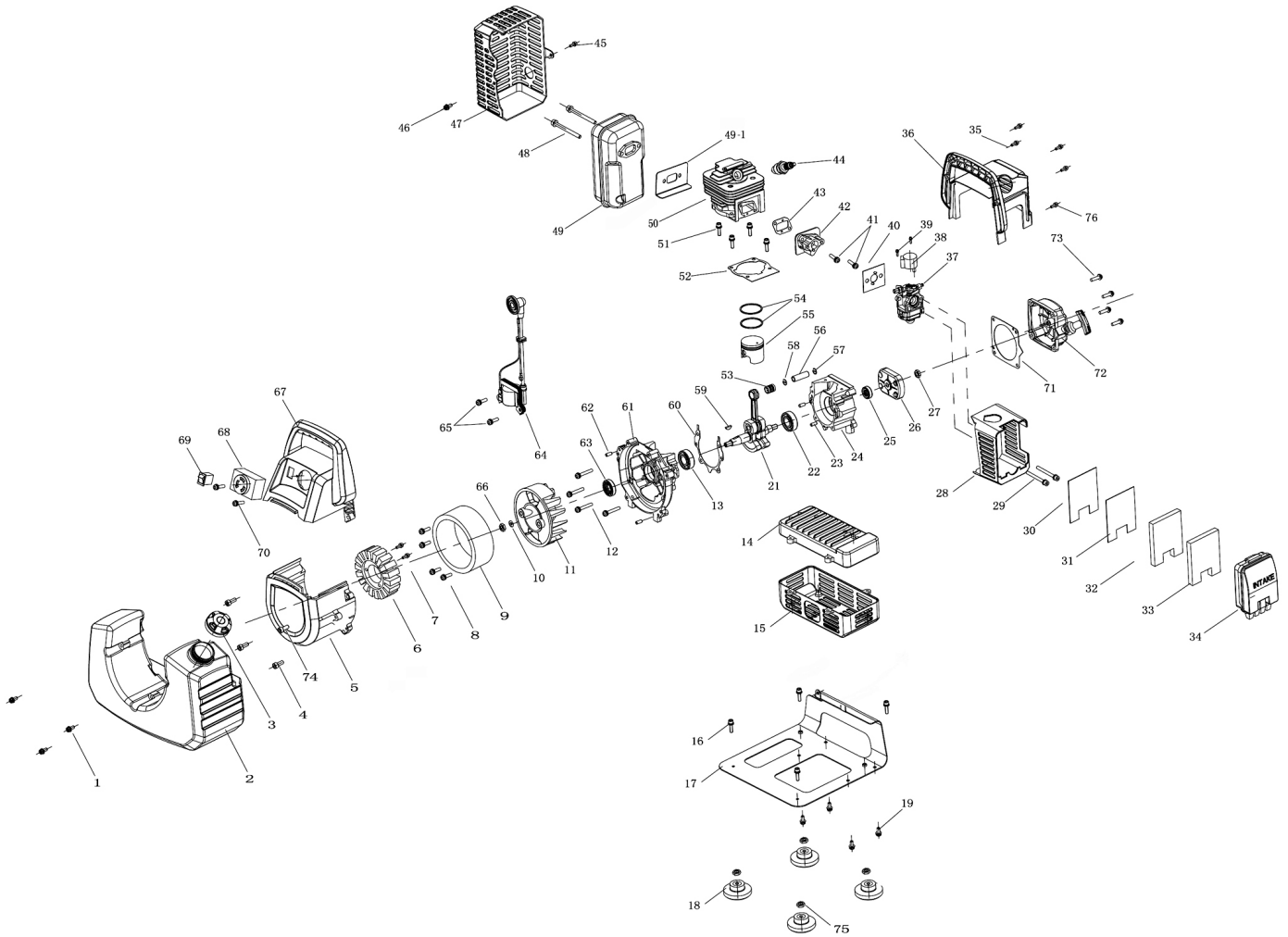




Parts Information:
Generator Inverter 1000W 230V
Model No: G1000I



NOTE: It is our policy to continually improve products and as such we reserve the right to alter data, specifications and component parts without prior notice.

IMPORTANT: No liability is accepted for incorrect use of product.

WARRANTY: Guarantee is 12 months from purchase date, proof of which will be required for any claim.

Sealey Group, Kempson Way, Suffolk Business Park, Bury St Edmunds, Suffolk. IP32 7AR



01284 757500



01284 703534



sales@sealey.co.uk



www.sealey.co.uk



Parts Information:
Generator Inverter 1000W 230V
Model No: G1000I

Item	Part No.	Description
1	G1000I.01	SOCKET CAP SCREW (M5x20)
2	G1000I.02	OIL TANK
3	G1000I.03	TANK CAP
4	G1000I.04	SOCKET CAP SCREW (M5x25)
5	G1000I.05	MOTOR CASE
6	G1000I.06	STATOR ASS'Y
7	G1000I.07	PHILLIPS SCREW (5x30)
8	BHSS815.S	BUTTON HEAD SOCKET SCREW M8x15 ZINC
9	G1000I.09	ROTOR ASS'Y
10	G1000I.10	O-RING
11	G1000I.11	FAN
12	G1000I.12	SOCKET CAP SCREW (M5x30)
13	G1000I.13	BEARING
14	G1000I.14	INVERTER UNIT
15	G1000I.15	COVER
16	G1000I.16	PHILLIPS SCREW (M4x15)
17	G1000I.17	BOTTOM SUPPORT
18	G1000I.18	RUBBER FOOT
19	G1000I.19	FLANGE SCREW (M6x10) c/w NUT
20	G1000I.20	SUPPORT BAR
21	G1000I.21	CRANKSHAFT CONNECTING ROD
22	G1000I.22	BEARING
23	G1000I.23	PIN
24	G1000I.24	CRANKCASE, RIGHT
25	G1000I.25	OIL SEAL
26	G1000I.26	DRIVE PLATE
27	G1000I.27	NUT
28	G1000I.28	CARBURETTOR COVER
29	G1000I.29	SCREW
30	G1000I.30	PLATE
31	G1000I.31	NET
32	G1000I.32	FILTER ELEMENT
33	G1000I.32	FILTER ELEMENT
34	G1000I.34	FILTER COVER
35	G1000I.35	SELF-TAPPING SCREW (4x20)
36	G1000I.36	HOUSING (RIGHT)
37	G1000I.37	CARBURETTOR
38	G1000I.38	STOP MOTOR
39	MSP45.S	MACHINE SCREW PAN HEAD PHILLIPS M4x5mm (SINGLE)

Item	Part No.	Description
40	G1000I.40	HEAT PROTECTION PLATE
41	G1000I.41	SCREW
42	G1000I.42	HEAT PROTECTION SEAT
43	G1000I.43	GASKET
44	G1000I.44	SPARK PLUG
45	G1000I.45	SCREW
46	G1000I.46	SCREW
47	G1000I.47	PROTECTION COVER
48	SFS680.S	HEX HEAD FLANGE BOLT M6x80 SINGLE
49	G1000I.49	MUFFLER, EXHAUST
49-1	G1000I.49-1	GASKET
50	G1000I.50	CYLINDER
51	G1000I.51	SOCKET CAP SCREW (M5x20)
52	G1000I.52	GASKET
53	G1000I.53	BEARING
54	G1000I.54	RING
55	G1000I.55	PISTON
56	G1000I.56	PISTON PIN
57	G1000I.58	PISTON PIN RING
58	G1000I.58	PISTON PIN RING
59	G1000I.59	KEY
60	G1000I.60	GASKET
61	G1000I.61	CRANKCASE, LEFT
62	G1000I.62	PIN
63	G1000I.63	OIL SEAL
64	G1000I.64	IGNITION ASS'Y
65	G1000I.65	SOCKET CAP SCREW (M5x20)
66	FN8.S	FLANGE NUT SERRATED M8 ZINC (SINGLE)
67	G1000I.67	HOUSING (LEFT)
68	G1000I.68	SOCKET
69	G1000I.69	SWITCH
70	G1000I.70	PHILLIPS SCREW (M4x16)
71	G1000I.71	GASKET
72	G1000I.72	RECOIL STARTER ASS'Y
73	G1000I.73	SOCKET CAP SCREW (M5x20)
74	G1000I.74	SOCKET CAP SCREW (M5x35)
75	SN6.S	STEEL NUT M6 ZINC DIN934 (SINGLE)
76	G1000I.76	SELF-TAPPING SCREW (4x25)

NOTE: It is our policy to continually improve products and as such we reserve the right to alter data, specifications and component parts without prior notice.

IMPORTANT: No liability is accepted for incorrect use of product.

WARRANTY: Guarantee is 12 months from purchase date, proof of which will be required for any claim.

Sealey Group, Kempson Way, Suffolk Business Park, Bury St Edmunds, Suffolk. IP32 7AR



01284 757500



01284 703534



sales@sealey.co.uk



www.sealey.co.uk