



# General Laboratory Equipment

Bottles	238	Gas Washing Bottles	246	Rubber Tubing, Clamps & Connectors	232
Burettes	235	Glass Tubing	246	Spatulas, Spoons & Scoops	237
Burners & Stands	232	Health & Safety	227	Spotting Tiles	236
Calorimeters	245	Heating Mantles	245	Stirring Rods	238
Chromatography Paper	236	Hot Stirrer	245	Stoppers & Bungs	243
Coplin Jars	240	Indicator Test Paper	236	Test Tube Brushes	243
Cork Borders	243	Measuring	230	Test Tubes	242
Cotton Wool	236	Measuring Beakers	241	Timers	231
Crucibles	237	Measuring Cylinders	240	Tongs & Holders	237
Evaporating Dishes	236	Pestle & Mortars	237	Trolleys	246
Filter Paper	236	Petri Dishes & Racks	240	Tweezers	238
Flasks	242	Pipette Fillers	235	Watch Glass	245
Fume Extraction	228	Pipettes	235		
Funnels & Holders	244	Retort Stands & Clamps	233		

Full range of General Laboratory Equipment available at:

**[www.rapidonline.com](http://www.rapidonline.com)**

# NEW from



## MAKERSPACE TROLLEY

If you run, or are involved with a MakerSpace, you will quickly appreciate how useful this trolley set from Gratnells can be. For those who don't know, a MakerSpace is a location where people gather to co-create, share resources and knowledge, network and work on projects.

They help intermediate and advanced users develop their skills and creativity, particularly inspiring younger generations to engage with the STEM agenda. Their activity promotes development of high-end technology skills needed for prosperity and social mobility.

This specially-designed MakerSpace trolley holds Gratnells trays safely and securely while allowing easy access to components. Fitted with StopSafe runners, the trolley is supplied with 3 deep trays, 12 shallow trays, 12 green minibins, a roll holder, 5 single hooks and 5 double hooks.

The trolley can then be easily customised by using different tray combinations and additional hooks and bins.

- Robust steel frame and heavy duty lockable castors for reliable service
- Side and back panels with industry standard holes and slots for wide range of accessories
- Tool hangers can be moved and changed to suit a wide range of objects
- Suitable for loads up to 85kg
- Manufacturer's part **MST0144**

PLEASE NOTE THE TROLLEY IS SUPPLIED EMPTY

Contact us for a fully loaded trolley equipped to your specification - [education@rapidonline.com](mailto:education@rapidonline.com).



Only  
**£445.00**  
Order code 14-0481



## Health & Safety



### Clear Vented Safety Glasses

These safety glasses can be worn alone, or are perfect for fitting over most prescription spectacles.

- Vented to prevent fogging
- UV protected
- Lightweight polycarbonate
- Impact resistant lens
- CE marked
- Conform to ANSI Z87.1 2010 side-shield protection
- Eisco type **CH0619A**



Type	Order code	1+
Safety glasses	<b>52-3596</b>	1.52

565639



### Stealth 7000™ Safety Spectacles



Sports style safety spectacles offering excellent protection combined with a modern design.

- Ultra lightweight
- Contour design fits well onto smaller faces, suitable for children
- Clear polycarbonate frame and scratch-resistant lens
- Conforms to **EN166.1.F**
- Available in clear and smoke versions

Type	Order code	1+	5+	10+
Stealth 7000 clear	<b>87-3114</b>	3.20	3.07	2.70
Stealth 7000 smoke	<b>87-3122</b>	3.20	3.07	2.76

066179



### Stealth 7000™ Safety Specs Class Pack 20 + Gratnell Tray

A classpack of 20 Junior Stealth Safety Spectacles in a deep Gratnell's Tray with lid.

See order code **87-3114** for full details of the JSP Stealth 7000 Safety Spectacles.

- Perfect storage solution for safety spectacles



Type	Order code	1+
Safety Specs Pack 20	<b>87-3113</b>	52.32

525065



### Junior Stealth 7000™ Clear HC Lens

High quality lightweight junior spectacles with smaller frame, ideal for children and people with small facial features.

- Scratch resistant lens
- Can be worn over most glasses
- Conforms to **EN166**



Type	Order code	1+	10+
Junior spectacles	<b>87-0914</b>	2.62	2.47

072695



### Stealth 7000™ Safety Specs Junior Class Pack 20 + Gratnell Tray

A classpack of 20 Junior Stealth Safety Spectacles in a deep Gratnell's Tray with lid.

See order code **87-0914** for full details of the JSP Junior Stealth Safety Spectacles.

- Perfect storage solution for safety spectacles



Type	Order code	1+
Junior Specs Pack 20	<b>87-0913</b>	52.23

525066



### Martcare Indirectly Ventilated Safety Goggles

These Martcare indirectly-ventilated goggles from JSP are ideally suited for general-purpose eye protection due to their economical pricing and simplicity of use. The indirect ventilation system of the JSP Martcare goggles means that dust or liquid cannot directly fall into the goggles and gives additional protection over goggles which simply have perforated frames to allow air flow.

- Clear PVC lens
- Comfortable soft body
- Adjustable elasticated head-strap
- Conforms to **EN 166-1.B.3.4**



Type	Order code	1+	5+
Martcare goggles	<b>87-3104</b>	1.40	1.24

061349



### Martcare Indirect Vent Safety Goggles Class Pack of 20

A classpack of 20 JSP Indirect Vent Martcare Goggles in a deep Gratnell's Tray with lid.

See order code **87-3104** for full details of the JSP Martcare goggles.

- Perfect storage solution for laboratory goggles



Type	Order code	1+
Goggles Classpack 20	<b>87-3103</b>	25.84

525067



### Economy Junior Goggles

Economy junior goggles especially designed for younger people and people with small facial features.

- General purpose protection against splashes, dust, fumes etc
- Frame made from soft PVC for a comfortable fit and adjustment to individual's faces
- Conforms to **EN166**



Type	Order code	1+	10+
Economy junior goggles	<b>87-1016</b>	1.55	1.45

061742



### Emergency Eye Wash

Sterile sodium chloride 0.9% w/v sterile water for ocular and topical irrigation and wound cleansing.

- Available in **packs of 25 single-use 20ml pods** and in **500ml bottles**



Type	Order code	1+
Pack of 25x 20ml	<b>87-4221</b>	6.27
500ml bottle	<b>87-4225</b>	1.44

300550



### Polycotton Lab Coats

Poly/cotton-mix lab coats for safety and protection of clothing.

- 1x breast pocket
- 2x side pocket
- Available in white or navy blue



Chest size	Colour	Order code	1+
86cm (34in)	White	<b>52-1194</b>	13.23
86cm (34in)	Navy blue	<b>52-1195</b>	16.53
106cm (42in)	White	<b>52-1196</b>	13.23
106cm (42in)	Navy blue	<b>52-1197</b>	15.72
122cm (48in)	White	<b>52-1198</b>	13.23
122cm (48in)	Navy blue	<b>52-1199</b>	15.72

061174



### Black Rubber Bib Aprons

Basic black rubber aprons, perfect for the chemistry laboratory.

The aprons are comfortable and flexible, waterproof and resistant to most chemicals likely to be used by students.

- Available in medium or large sizes
- Medium: width 685mm (27in.), length 915mm (36in.)
- Large: width 685mm (27in.), length 1065mm (42in.)
- Eisco **RBAP series**



Size	Order code	1+
Medium	<b>52-3595</b>	6.12
Large	<b>52-3594</b>	6.12

565638



### Blue Detectable Plasters

Bright blue sterile catering plasters.

- Blue colour stands out if accidentally lost in foodstuffs
- Occlusive material provides integral barrier to bacteria
- Metal detectable for food production facilities
- Supplied in an **assorted pack of 100**



Type	Order code	1+
Blue plasters	<b>87-4195</b>	3.79

300544



## sempercare®

## Powder-free Latex Gloves

Powder-free latex gloves providing higher protection than vinyl, and maintaining integrity under prolonged use. Ideal for protecting the hands against degreasing and cleansing solvents, ferric chloride etchant, caustic soda based products and most other chemicals associated with the electronics industry.



- Powder-free
- Non-sterile
- Beaded cuff
- High tensile strength
- May be used for either left or right hand
- Recommended for use with blood, blood stained fluids and harsh chemicals
- Supplied in **dispenser boxes of 100**

These gloves will not provide 100% protection under all working conditions and the user should establish suitability prior to use.

Type	Order code	1+	5+	10+
Small	<b>87-0947</b>	5.77	5.66	5.43
Medium	<b>87-0949</b>	5.77	5.66	5.43
Large	<b>87-0951</b>	5.77	5.66	5.43

300538

## Fume Extraction



## Glue Spray Air Filtration Units

These air filtration units are designed to be occasional 'spray traps' for studio/workshop cleanliness and operator protection from concentrations of airborne contaminants. The spray booths have two filters - a particulate (intake) filter and a carbon impregnated fibre filter. The particulate filter is a 3-stage graduated fibre filter with a high 'dust' holding capacity. The carbon filter assists in the reduction of solvent odours.



The units can be placed in two positions, either an upright position which is best for models and other three dimensional objects or a reclining position which is best for two dimensional artwork to be placed upon the filter. The small size of these units mean that they can be placed upon a desk, bench or carried on a trolley and the spray booths are ideal for use within art, graphics, hobby, modelling and craft environments for the filtration of aerosol adhesives, aerosol lacquers and fixatives and airbrush sprays applied to artwork of up to A2 size, solders, light grinding particles and dusts, cleaning solvents, etc.

- Quiet in operation
- Steel construction
- Dove grey finish
- Replaceable plastic spray/fume shield
- Back stand/carry handle
- Axial fans
- Sealed electrical wiring and switch, downstream of filters
- Brushless motor with external rotor
- UL, VDE and CSA approved

## Technical specification

Model no.	BV300S	BV200S
Fan motor	230V 50Hz 40W	230V 50Hz 80W
Air volume	325m³/hr	650m³/hr
Air velocity filter face	0.5m/sec	0.5m/sec
Air velocity shield face	0.32m/sec	0.35m/sec
Noise level	59dB(A)	61dB(A)
Dimensions W x H x D	510 x 385 x 350mm (525mm reclining depth)	720 x 515 x 430mm (600mm reclining depth)
Weight	11kg	19kg
Order code	<b>87-5500</b>	<b>87-5501</b>

Model	Size	Order code	1+
BV300S	A3	<b>87-5500</b>	272.83
BV200S	A2	<b>87-5501</b>	332.10

516889



## Air Filtration Hoods and Spray Booths

These units have been designed to be used as spray booths in the studio/classroom/workshop to protect operators and maintain environmental cleanliness and are ideal for art, graphics, design technology, crafts, modelling, etc. The spray booths use two filters for effective air filtration. The particulate (intake) filter is a 3-stage graduated fibre filter that has a high particle holding capacity. The second filter is a carbon type filter that assists in the reduction of solvent odours.



The design of these spray booths enable them to be used in one of two ways. 3D items such as models, PCBs, etc. may be placed onto the hood base for spraying, cleaning, sanding, etc. For artwork applications the hood enclosure will accept standard drawing boards (A2 **87-5502**, A1 **87-5503**) which may be placed at an angle for efficient overspray capture.

- Quiet in operation
- Steel construction
- Dove grey finish
- Fan/filter unit mounted onto hood enclosure
- Axial fans
- Sealed electrical wiring and switch, downstream of filters
- Brushless motor with external rotor
- UL, VDE and CSA approved

## Technical specification

Model no.	BV200H	BV100H
Fan motor	230V 50Hz 40W	230V 50Hz 80W
Air volume	325m³/hr	650m³/hr
Air velocity filter face	0.5m/sec	0.5m/sec
Air velocity shield face	0.25m/sec	0.25m/sec
Noise level	59dB(A)	61dB(A)
Dimensions W x H x D	680 x 600 x 530mm	960 x 740 x 720mm
Weight	20kg	35kg
Order code	<b>87-5502</b>	<b>87-5503</b>

Model	Air volume cap.	Order code	1+
BV200H	325m³/hr	<b>87-5502</b>	595.35
BV100H	650m³/hr	<b>87-5503</b>	809.19

516890



## Air Extraction Unit

This air extraction unit uses a flexi-duct to carry away extracted air, either via a standard domestic vent or simply placed through a partially opened window, making the unit very portable and convenient. The unit can be used in one of two positions, either upright for 3D items such as models, PCBs, etc. where they can be rested on the surface and where solder fumes and general solvent and gas extraction is performed. The second position the unit can be employed in is a reclining position which is designed for accommodating artwork up to A3 size for spray mounting, aerosol lacquers and fixatives, etc.



Filtration is performed by a particulate (intake) filter that is a 3-stage graduated fibre filter that has a high particle holding capacity, giving the filter a long operational life. Extraction is then performed via the 2m x ø100mm flexi-duct. This filtration/extraction process vastly reduces and/or eliminates operator exposure to potentially hazardous substances.

- Steel construction
- Dove grey finish
- Replaceable plastic spray/fume shield
- Particulate filter
- Carry handle
- Can be assembled in seconds
- Centrifugal blower

- Sealed electrical wiring and switch, downstream of filters
- Brushless motor with external rotor
- UL, VDE and CSA approved

## Technical specification

Model no.	BV300S-D
Fan motor	230V 50Hz 105W
Air volume	355m³/hr
Air velocity filter face	0.6m/sec
Air velocity shield face	0.5m/sec
Noise level	58dB(A)
Flexi-duct	2m x ø100mm
Dimensions W x H x D	565 x 390 x 430mm
Weight	10kg
Order code	<b>87-5504</b>

Model	Air volume cap.	Order code	1+
BV300S-D	355m³/hr	<b>87-5504</b>	253.11

516891



## Air Extraction Spray Booths

These air extraction units are ideally suited to use as spray booths for a wide variety of applications in the studio, classroom or workshop. There is a choice of air volume capacities to cater for application and useage and all odours and gases extracted are vented to atmosphere via flexi-duct so that the working environment can be kept free of contaminants. The design of the units mean that they are suitable for use with objects such as: prototypes, models, ceramic parts, PCBs, etc. Drawing boards, either A2 (**87-5505**) or A2 and A1 (**87-5506**), can be accommodated, being put in at an angle for efficient overspray capture.



Air extraction is carried out by centrifugal blowers via a three stage graduated fibre particulate filter that has a high particle holding capacity, ensuring long filter life. The filtered air is exhausted via flexi-ducts (1x for **87-5505** and 2x for **87-5506**) which may be either fixed to a standard domestic vent or placed through any convenient window. This dual process of extraction and filtration greatly reduces or eliminates operator exposure to contaminants and harmful airborne substances.

- Steel construction
- Dove grey finish
- Particulate filter
- Carry handle
- Can be assembled in seconds
- Centrifugal blower (2x for **87-5506**)
- Sealed electrical wiring and switch, downstream of filters
- Brushless motor with external rotor
- UL, VDE and CSA approved

## Technical specification

Model no.	BV200H-D	BV100H-D
Fan motor	230V 50Hz 105W	230V 50Hz 210W
Air volume	355m³/hr	710m³/hr
Air velocity filter face	0.6m/sec	0.6m/sec
Air velocity hood face	0.25m/sec	0.27m/sec
Noise level	58dB(A)	60dB(A)
Flexi-duct	2m x ø100mm	2x 2m x ø100mm
Dimensions W x H x D	680 x 600 x 450mm	960 x 740 x 620
Weight	21kg	37kg
Order code	<b>87-5505</b>	<b>87-5506</b>

Model	Air volume cap.	Order code	1+
BV200H-D	355m³/hr	<b>87-5505</b>	676.14
BV100H-D	710m³/hr	<b>87-5506</b>	1033.35

516892

## How do I ...

Email baskets?  
Register Online?  
Find invoices?

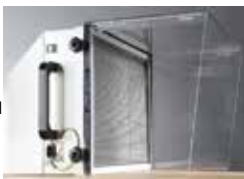
[www.rapidonline.com/schools-faq](http://www.rapidonline.com/schools-faq)





## Desk/Bench Top Fume Cabinets

These fume cabinets are for use in situations where external venting is impractical but where there is a need for contaminant capture and air filtration. Especially suitable for use in dental labs, for electronic design and rework, pharmaceutical labs, design technology, science and other industrial and educational uses. Applications for which the fume cabinets are ideal include: filtration of fumes and capture of contaminant particles from monomers, adhesives, hazardous powders/particulates, conformal coatings, resins, sealants, solders, light grinding particles and dust, organic solvents, etc.



In operation the fume cabinet has two stages of filtration. The particulate (intake) filter is a 3-stage graduated fibre filter that has a high dust holding capacity, prolonging its life. The second stage of filtration is by a high grade bonded carbon filter (3.5kg **87-5513**, 7kg **87-5514**). The high performance of the fume cabinet is aided by a folding clear plastic fume shield that can be removed and stored if not required, reducing the footprint of the unit.

- Steel fan/filter casing
- Dove grey finish
- Folding clear PETG plastic fume shield
- Particulate filter
- **87-5514** has dual airspeed function to facilitate higher vapour absorption
- Carry handle
- Can be assembled in seconds
- Centrifugal blower
- Sealed electrical wiring and switch, downstream of filters
- Brushless motor with external rotor
- **UL, VDE and CSA approved**

Technical specification				
Model no.	BV500S-C	BV700S-C		
Fan motor	230V 50Hz 105W	230V 50Hz 210W		
Air volume	325m³/hr	650m³/hr		
Air velocity filter face	0.50m/sec	0.55m/sec		
Air velocity shield face	0.38m/sec	0.50m/sec		
Noise level	60dB(A)	62dB(A)		
Dimensions W x H x D	575 x 385 x 530mm	785 x 515 x 610mm		
Weight	25kg	37kg		
Order code	<b>87-5513</b>	<b>87-5514</b>		
Model	Air volume cap.	Order code	1+	
BV500S-C	325m³/hr	<b>87-5513</b>	1056.32	
BV700S-C	650m³/hr	<b>87-5514</b>	1563.30	

510893



## Fume Filtration Hoods and Cabinets

A range of circulatory fume filtration hoods and cabinets that are ideal for use where contaminant capture and filtration are required but where external venting is impractical. Two stages of filtration, hood lighting and a clear polycarbonate panel that helps protect the operator go towards making these fume cabinets suitable for the filtration of fumes, vapour and particulates emanating from: spray mount adhesives, conformal coatings and paints, monomers, hazardous powders and particulates, resins, sealants, solders, light grinding particles, organic solvents and cleaners, etc.



In addition to being ideal for 3D models, standard drawing boards may also be placed within the hood enclosure, A2 (**87-5515**) or A1 (**87-5516**). The large capacity of these units make them at home in dental/medical labs, pharmaceutical labs, design technology workshops, science in education, etc.

- Steel construction with dove grey finish
- Clear polycarbonate panel for protection
- Hood lighting
- Particulate filter

- Two-stage filtration process
- Sealed electrical wiring and switch, downstream of filters
- **UL, VDE and CSA approved**

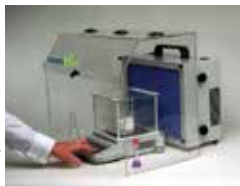
Technical specification				
Model no.	BV660H-C	BV930H-C		
Fan motor	230V 50Hz 105W	230V 50Hz 210W		
Air volume	355m³/hr	710m³/hr		
Air velocity filter face	0.50m/sec	0.57m/sec		
Air velocity shield face	0.50m/sec	0.55m/sec		
Noise level	60dB(A)	62dB(A)		
Overall dimensions W x H x D	680 x 660 x 610mm	960 x 800 x 800mm		
Weight	38kg	60kg		
Order code	<b>87-5515</b>	<b>87-5516</b>		
Model	Air volume cap.	Order code	1+	
BV660H-C	355m³/hr	<b>87-5515</b>	1141.29	
BV930H-C	710m³/hr	<b>87-5516</b>	1701.00	

510894



## Small Desktop Fume Cabinet

This fume cabinet is a small desktop unit that is ideal for use within dental labs/design technology workshops, pharmaceutical labs and other areas of the classroom and workshop. Filtration is carried out by a 15 to 20 micron pre-filter followed by a 3.5kg high grade bonded carbon filter for hydrocarbon (organic solvent, gas) adsorption. It is this process of filtration, absorption and dilution that vastly reduces or eliminates operator exposure to potentially hazardous substances.



Additional features of this fume cabinet include a clear PETG plastic fume hood and a powerful radial blower. A Hinged lid, in the hood, assists in safely and easily positioning items such as weighing scales and the like. Activities such as the weighing and handling of potentially harmful powders/particulates, applying adhesives, cleaning solvents, soldering and using small grinding tools, etc. is carried out safely within the hood and the cleaned air is vented to atmosphere at the rear right of the cabinet.

- Small desktop fume cabinet for laboratory/workshop benchtop use
- Capacity 202m³/hr
- Particulate pre-filter followed by high grade bonded carbon filter for absorption
- Clear PETG plastic fume hood
- Hinged lid to assist in positioning products
- Dove grey finished steel construction
- Radial blower
- Sealed electrical wiring and switch, downstream of filters
- **UL, VDE and CSA approved**

Technical specification				
Model no.	BV570H-C			
Fan motor	230V 50Hz 60W			
Air volume	202m³/hr			
Air velocity filter face	0.5m/sec			
Air velocity hood face	0.32m/sec			
Noise level	58dB(A)			
Dimensions W x H x D	570 x 465 x 335mm			
Weight	13kg			
Order code	<b>87-5517</b>			
Model	Air volume cap.	Order code	1+	
BV570H-C	202m³/hr	<b>87-5517</b>	805.95	

510895



## Fume Extraction Hoods and Cabinets

These fume filtration hoods are intended for use where external venting is required. The attached flexi-duct vents to atmosphere, either through a standard domestic vent or a convenient window. Filtration is carried out by a 3-stage graduated fibre filter with a high dust holding capacity that ensures a long filter



life. This dual process of filtration and extraction means that operators and environments are protected from exposure to potentially hazardous substances.

The units may be used both for 3D items such as PCBs, models, etc. and 2D artwork, the units accepting standard drawing boards (A2 **87-5519**, A1 **87-5520**). A clear polycarbonate panel is mounted on the hood and hood lighting is also included. The whole unit can be assembled in seconds and may be placed on a desk, bench or trolley. Ideal for use in the workshop, dental/medical labs, design technology classroom, pharmaceutical lab, etc.

- **TechFlo** fume cabinets of 355 or 710m³/hr capacity
- Capture, contain, filter and expel for a cleaner, safer working environment
- Extraction cabinets vent to atmosphere via flexi-duct of 2m x ø100mm
- **87-5520** has two flexi-duct vents
- Three-stage particulate filter
- Can accommodate standard drawing boards
- Clear polycarbonate panel for protection
- Hood lighting
- Steel construction with dove grey finish
- Sealed electrical wiring and switch, downstream of filters
- **UL, VDE and CSA approved**

Technical specification				
Model no.	BV660H-D	BV930H-D		
Fan motor	230V 50Hz 105W	230V 50Hz 210W		
Air volume	355m³/hr	710m³/hr		
Air velocity filter face	0.60m/sec	0.60m/sec		
Air velocity shield face	0.55m/sec	0.60m/sec		
Noise level	58dB(A)	60dB(A)		
Flexi-duct	2m x ø100mm	2x 2m x ø100mm		
Dimensions W x H x D	680 x 600 x 530mm	960 x 740 x 720mm		
Weight	26kg	44kg		
Order code	<b>87-5519</b>	<b>87-5520</b>		
Model	Air volume cap.	Order code	1+	
BV660H-D	355m³/hr	<b>87-5519</b>	854.55	
BV930H-D	710m³/hr	<b>87-5520</b>	1308.15	

510896



## Fume and Vapour Extraction Unit

A fume and vapour extraction unit that uses a 2m x ø100mm flexi-duct to vent harmful and unwanted vapours to either a standard domestic vent or a convenient window. Suitable for use within laboratory, workshop, classroom and anywhere where there is a need for the extraction of fumes and fine particles whilst handling: monomers, adhesives, hazardous powders, conformal coatings, resins, sealants, solders, light grinding particles and dusts, organic solvents, etc.



Filtration is carried out by a 3-stage graduated fibre filter that has a high dust holding capacity that prolongs the life of the filter. Performance of this fume cabinet is enhanced by the provision of a clear PETG plastic fume shield which is also removable, reducing the footprint of the cabinet. The dual process of filtration and extraction together with the design and overall performance of the fume cabinet greatly reduces or eliminates operator exposure to potentially hazardous substances.

- Venting via 2m flexi-duct to atmosphere
- Clear folding plastic fume shield
- Carrying handle
- Use on desk, bench or trolley
- Simple assembly and use
- Particulate filter
- Steel fan/filter casing with dove grey finish
- Sealed electrical wiring and switch, downstream of filters
- **UL, VDE and CSA approved**

Technical specification				
Model no.	BV550S-D			
Fan motor	230V 50Hz 40W			
Air volume	355m³/hr			
Air velocity filter face	0.5m/sec			
Air velocity hood face	0.32m/sec			
Noise level	58dB(A)			
Dimensions W x H x D	510 x 360 x 500mm			
Weight	11kg			
Order code	<b>87-5521</b>			
Model	Air volume cap.	Order code	1+	
BV550S-D	355m³/hr	<b>87-5521</b>	628.22	

510897



## Spare/Replacement Filters

A range of spare/ replacement filters for use with BenchVent extraction and filtration systems.

- Please see Technical Specification for Model/Filter cross-reference chart



### Technical specification

Extractor Model	10µ PST Pads	Standard 5 micron	HEPA 99.95% to 0.3µ	Low Level Charcoal	Standard Activated Carbon	Low Level Fume	Spray Tanning
BV300S	PRE495	IFA3	HE495	CHA3	-	FKA3	-
BV200S	PRE705	IFA2	HE705	CHA2	-	FKA2	-
BV200H	PRE495	IFA3	HE495	CHA3	-	FKA3	-
BV100H	PRE705	IFA2	HE705	CHA2	-	FKA2	-
BV200H-D	-	IFA3	-	-	-	-	-
BV100H-D	-	IFA2	-	-	-	-	-
BV300S-D	-	IFA3	-	-	-	-	-
BV500S-D	-	IFA3	-	-	-	-	-
BV500S-C	PRE495	IFA3	HE495	-	AC200	-	-
BV570H-H	PRE405	-	HE495	-	-	-	-
BV570H-C	PRE405	-	-	-	AC200	-	-
BV700S-C	PRE705	IFA2	HE705	-	AC100	-	-
BV600H-C	PRE495	IFA3	HE495	-	AC200	-	-
BV930H-C	PRE705	IFA2	HE705	-	AC100	-	-
BV660H-D	-	IFA3	-	-	-	-	-
BV930H-D	-	IFA2	-	-	-	-	-
BV500	-	IFA3	-	-	-	-	IFA3PT

### Price each

Size (mm)	Type	Order code	1+
495 x 372 x 23	IFA3	87-5535	75.69
495 x 495 x 23	IFA3	87-5536	78.30
705 x 502 x 47	IFA2	87-5537	101.79
495 x 372 x 12	CHA3	87-5538	17.40
495 x 495 x 12	CHA3	87-5539	23.92
705 x 502 x 12	CHA2	87-5540	33.93
495 x 372 x 23	FKA3	87-5541	51.76
705 x 502 x 47	FKA2	87-5542	73.95
495 x 495 x 23	FKA3	87-5543	54.81
495 x 372 x 23	IFA3	87-5544	40.02
705 x 502 x 47	IFA2	87-5545	54.81

### MOQ 6 - In Multiples of 6

Size (mm)	Type	Order code	6+
495 x 372 x 23	PRE495	87-5546	3.48

### Price each

Size (mm)	Type	Order code	1+
705 x 502	PRE705	87-5547	6.96
495 x 372 x 23	HEA3	87-5548	34.80
705 x 502 x 47	HEA2	87-5549	54.81
405 x 320 x 47	HE405	87-5550	79.17
495 x 372 x 23	HE495	87-5551	100.92
705 x 502 x 47	HE705	87-5552	138.33
405 x 320 x 73	HE/CA/405	87-5553	173.13
405 x 320 x 50	AC200	87-5554	94.83
585 x 450 x 50	AC100	87-5555	138.33

519008

## Order online

Save time, and place your order at:  
[www.rapidonline.com](http://www.rapidonline.com)

24 hours a day

## Measuring



### Leicester Height Measure

An accurate portable free standing height measure, complete with case.

- Quickly assembled
- Measuring range 210cm dual reading both metric and imperial
- Graduation 1mm and 1/8in
- Fun and easy to use



073930

Type	Order code	1+
Leicester height measure	52-0579	64.06



### Clinometer Mk1

A traditional lightweight angle-measuring instrument to calculate heights.

- Complete with product guide
- Wheel size: 130mm diameter



081638

Type	Order code	1+
Clinometer Mk1	52-9856	9.77



### Clinometer Mk2

A compact Clinometer with no external moving parts and a combined sighting angle-reading eyepiece

- A window on the side allows a second person to check a reading
- All angles in degrees followed by a plus or minus to indicate an upward or downward slope
- Complete with product guide
- Size: 140mm diameter



081639

Type	Order code	1+
Clinometer Mk2	52-9858	12.15



### Plastic Ruler Metre - (cm)



A metre stick with rounded edges for safety.

- Clearly marked with 1, 5 and 10cm graduations

Type	Order code	1+
Metre stick	34-2648	6.40

010532



### Wooden Metre Stick Rulers



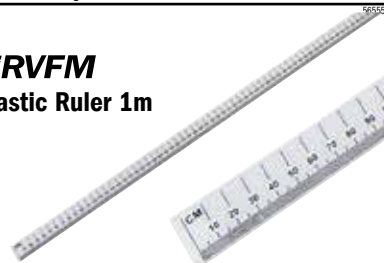
Metre and half-metre stick rulers made from premium grade hardwood.

- Graduated on both edges in centimetres and millimetres
- Horizontal reading
- Available in metre and half-metre lengths
- Eisco PH0064-PR series

Length	Pack size	Order code	1+
Half metre	Single	52-3377	2.65
One metre	Single	52-3376	3.20



### Plastic Ruler 1m



A moulded plastic 1m ruler with cm and mm graduations.

- Horizontal reading
- Graduated on both edges
- 25mm width

Type	Order code	1+
Plastic 1m ruler	52-9912	4.63



### Aluminium Ruler (30cm/12in)



A high quality 30cm ruler clearly graduated in both millimetres and 1/16in. Graduations start from the very end of the ruler permitting measurement from an edge.

- Anodised aluminium construction
- Non-slip rubber insert on rear
- Bevelled edges
- Convenient hanging hole
- Width 35mm

Type	Order code	1+	5+
30cm Aluminium ruler	34-2662	1.37	1.28

070842



### Stainless Steel Rulers



Stainless steel rulers with both metric and imperial scales.

- Available in 150mm and 300mm lengths
- Easy to read black figures and graduations
- Subdivided down to 0.5mm and 1/64 inch
- Conversion table on the reverse side (inches to mm)
- Spring tempered stainless steel
- Hanging hole

Type	Order code	1+	5+	20+
150mm Ruler	86-1644	0.739	0.635	0.416
300mm Ruler	86-1646	0.864	0.801	0.739

071287



## 300mm (12in.) Shatter-Resistant Plastic Ruler



Standard, transparent shatter-resistant 30cm (12 in) rulers.

- Graduated in both inches and millimetres
- 30cm length
- **Helix type L16**

MOQ 2			
Type	Order code	2+	
300mm Ruler	<b>34-2660</b>	0.73	061901



## Plastic Shatter Resistant Rulers



Shatter resistant clear ruler with metric rulings one side and imperial the other.

- Bevelled edges
- **Available in 15 or 30cm**
- Supplied in **packs of 100**

Type	Order code	1+	
30cm clear ruler	<b>34-9882</b>	17.43	122406
15cm clear ruler	<b>34-9884</b>	9.19	



## Metric Calliper

Measures most shapes from 1mm to 30cm by simply reading measurements through a single viewing window.



- Designed for calculating areas and volumes
- Able to measure depth, width and diameter
- Size: 420 x 195mm

Type	Order code	1+	
Metric calliper	<b>52-9854</b>	6.05	081637



## Trundle Wheel

Measure intermediate distances with this robust and durable Trundle wheel.

- Clicker can be adjusted to one of three positions: off, click every 10cm or click every metre
- Splits into two parts for easy storage
- Length 83cm
- Supplied with carry bag and product guide
- Ideal primary school resource
- Suitable for **Key Stages 1 & 2** (ages 5 to 11)



Type	Order code	1+	
Trundle wheel	<b>52-0656</b>	8.99	070780



## Trundle Wheel Counter

This robust counter extends the number of activities that can be performed by the Trundle Wheel, **52-0656**.

- Accurately counts metres up to 9999
- Can also be set to register every 10cm giving a maximum of 999.9 metres
- Fits in place of the standard clicker

Trundle wheel not included.



Type	Order code	1+	
Trundle wheel counter	<b>52-9848</b>	9.78	081634



## Trundle Wheel and Counter

This trundle wheel makes measuring long distances easy.

- Non-slip rubber tyre
- Multiple adjustment length handle
- Optional counter
- Counts up to 10,000 metres



Type	Order code	1+	
Trundle wheel	<b>52-0849</b>	17.82	547670

## Timers



## Sandtimers Set

A set of two sandtimers that have a variety of uses.

- Set includes 1x one minute and 1x two minute timer
- Supplied as a **set of 2**



Type	Order code	1+	
Sandtimers set	<b>06-5880</b>	2.39	078655



## Digital Stopclock with External Trigger

The TM-20A is a high accuracy, easy to use unit that can be used either as a standard timer or may be automatically started and stopped by an externally connected device.

- Uses a 30ppm quartz crystal and 27pF fixed calibrated capacitor for high accuracy
- External start/stop control connection via 4mm jack sockets
- Stop/Start and reset buttons on top of unit for easy activation
- Elapsed time function
- 15mm LCD display
- Housed in an impact resistant ABS case

Requires 1x AAA 1.5 volt battery (supplied).



### Technical specification

Range	99mins., 59s, 99/100th with auto roll-over
Resolution	1/100th
Accuracy	±1s per 24hr.
Dimensions	100 x 105 x 80mm
Weight	151g

Type	Order code	1+	
Digital stopclock	<b>85-1451</b>	9.71	078075



## Dual Power Timers



These handy-sized **timers** from **TickiT** can time up or down to 99 mins and 59 seconds at which point a bleeping alarm is sounded to say the time has been reached. Having dual power functionality means they are always charged and ready to go. These timers can be used in numerous situations where a hands free time period needs to be set or measured such as in scientific experiments, games or for the timing of tests.

- Push buttons designed for ease of use
- Colour coded for easy identification.
- Overall size: 65 x 65 x 13mm
- Display area: 53 x 25mm
- Supplied in packs of 5 or as a classpack of 30

Type	Order code	1+	
Pack of 5	<b>06-9930</b>	19.38	563468
Class set of 30	<b>06-9931</b>	125.55	



## Electronic Clock/Timer

A simple to operate count down/count up bench timer with 11mm hi-contrast LCD display.

- High-grade ABS plastic case incorporates soft touch rubber buttons
- High-frequency sonic alarm sounds on expiry of a count-down time
- Countdown time can be memorised for repeats of the same time
- Supplied with instructions for use

Requires 1x AA battery (included).



### Technical specification

Count up capacity	23 hours, 59 mins, 59 seconds
Count down capacity	23 hours, 59 mins, 59 seconds with alarm
Resolution	1 second

Type	Order code	1+	5+	10+	
Bench timer	<b>85-1465</b>	11.37	10.34	9.85	031037



## Tally Counter

A hand-held 4-digit tally counter in an attractive chrome-finished case. Each press of the top button increases the count by 1.

- Positive click action
- Reset to zero via thumb wheel on side
- Reset wheel can be removed to prevent unauthorised resetting
- **Eisco type B10346**



Type	Order code	1+	
Tally counter	<b>52-3494</b>	3.57	565613



## Burners & Stands



### Tall Triangular Tripod 130 x 200mm

A laboratory tripod with a triangular zinc-plated, cast-iron top and mild steel legs.

- Zinc-plated cast-iron top
- Mild steel legs
- Length of side 120mm
- Height 210mm
- Eisco type CH0645A



Type	Order code	1+
Triangular tripod	52-3387	3.18

565561



### Pipe Clay Triangles

A range of pipe clay triangles for supporting laboratory items being heated by a Bunsen burner or other heat source.



The triangles are made of wires strung in an equilateral triangle with three hollow ceramic tubes threaded onto it. The triangle is usually supported on a tripod or iron ring and, in turn, supports a crucible, etc., allowing it to be directly heated by the flame.

- Pipe clay triangles
- Available in a range of sizes

Type	Order code	1+
50mm	52-3380	0.398
60mm	52-3537	0.46
75mm	52-3538	0.501

565555



### Wire Gauze Squares

A range of iron wire gauze squares available with or without a ceramic centre, ideal for supporting flasks, etc, while being heated on a tripod stand.



- Wire gauze with or without ceramic centre
- High quality, extra strong

Size	Ceramic centre	Order code	1+
<b>Packs of 10</b>			
125 x 125mm	Yes	52-3327	5.00
150 x 150mm	Yes	52-3328	7.10
125 x 125mm	No	52-3567	5.40
150 x 150mm	No	52-3568	6.32
<b>Single</b>			
150 x 150mm	Yes	52-3323	0.705

565518



### Laboratory Alcohol/Spirit Lamps

Spirit / alcohol burning lamps ideal for smaller heating tasks in the laboratory.

- Glass or stainless steel construction
- Supplied complete with cap



Construction	Capacity	Order code	1+
Glass	120ml	52-3518	2.14

565626



### Tripod Stand and Stainless Steel Alcohol Burner

A laboratory alcohol burner and a suitable tripod stand.

- Lamp is made from stainless steel and has a fuel capacity of 80ml
- Stand is 110mm high with an inner top diameter of 95mm
- Sold separately



Type	Order code	1+
Alcohol burner	52-3325	4.79
Tripod	52-3326	1.83

565520



### Autoclave

This high dome pressure cooker with safety valve and 3 pressure settings is ideal for use as an autoclave in the laboratory, classroom or even in the home.

- Three settings - 5lb, 10lb or 15lb
- Generous 6 litre capacity
- Operates at 121°C and 15psi



Capacity	Order code	1+
6 litres	52-2598	69.90

550537



### Laboratory Bunsen Burners 13mm

A range of Bunsen burners consisting of a nickel-plated burner tube mounted on a die-cast base.

- Rotating air regulator
- Base diameter 80mm
- Tube diameter 13mm
- Height 142mm
- Weight 280g
- Eisco CH0088 series

See order code 52-3590 for suitable rubber tubing.



Fuel	Order code	1+
Natural gas	52-3365	6.49
LPG	52-3366	6.49

565547



### Bunsen Burners - Natural Gas and LPG

A range of Laboratory Bunsen Burners with models suitable for use with natural gas and LPG. The burners have nickel-plated burner tubes with a rotatable air regulator and an enamelled cast base for good



stability. Natural gas models are available with 11mm barrel diameter. The LPG model has a barrel diameter of 13mm.

- Height: 125mm (11mm model); 140mm (13mm models)
- Base diameter 80mm
- Nickel-plated burner tube
- Rotatable air regulator
- Enamelled cast base
- Cylindrical rifled connector
- 8mm gas inlet

Type	Jet size	Order code	1+
11mm Natural Gas	0.65mm	52-0153	4.75
13mm LPG	0.45mm	52-0157	5.58

501648



### Heat-Resistant Asbestos-Free Bunsen Burner Mats

Asbestos-free, heat-resistant bench mats, ideal for use under bunsen burners. The mats are manufactured from calcium silicate and are in the form of rigid sheets.

- Size 300 x 300mm
- Thickness approx. 3.5mm
- Available singly and in packs of 10



Type	Order code	1+
Single	52-0127	2.12
Pack of 10	52-0125	12.99

081315



### Waxed Solid Fuel Tablets



These solid fuel tablets are suitable for use in wax burners in the science laboratory or in the workplace.

- Supplied in packs of 20

Type	Order code	1+
Packs of 20	52-2699	7.64

550623

## Rubber Tubing, Clamps & Connectors



### Rubber Tubing for Bunsen Burners

Rubber tubing for connecting Bunsen burners to the gas supply.

- Reinforced ends provide added strength and resist leaks
- Length approx. 1m



Type	Order code	1+
Bunsen tubing	06-7032	2.71

079639

**RVFM**

**Thin Wall Rubber Tubing**

Rubber tubing for general laboratory use. The reduced wall thickness of this tubing makes it more flexible and economical in use.

- Rubber tubing for general laboratory use
- Suitable for use at lower pressures
- Flexible
- Economical
- Supplied in **10m lengths**



Bore diameter	Wall thickness	Order code	1+
6mm	1.5mm	<b>52-0129</b>	6.91
8mm	1.5mm	<b>52-0133</b>	10.70
10mm	2.0mm	<b>52-0137</b>	15.37
12mm	2.5mm	<b>52-0139</b>	16.44

500178

**RVFM**

**Rubber Tubing with Thick Wall**

Rubber tubing for general laboratory use. The greater wall thickness of this tubing makes it suitable for use at higher pressures.

- Rubber tubing for general laboratory use
- Suitable for use at higher pressures
- Supplied in **1m lengths**



Bore diameter	Wall thickness	Order code	1+
6mm	3mm	<b>52-0141</b>	1.28
10mm	3.5mm	<b>52-0149</b>	2.41

500179

**RVFM**

**Rubber Tubing**

This flexible rubber tubing is ideal for use in the science laboratory.

- Colour red
- Bore 5mm
- Wall thickness 1.5mm
- Size N5
- Length 10m



Bore	Length	Order code	1+
5mm	10m	<b>52-2754</b>	7.50

550639



**Bunsen Burner Tube 900mm (Pack of 10)**



Neoprene rubber tubing with reinforced ends, ideal for use with Bunsen burners.

- Length 900mm
- Internal diameter 5mm
- Supplied in **packs of 10**

Type	Order code	1+
Neoprene rubber tubing	<b>52-3312</b>	55.77

565512



**Extra Soft Red Rubber Tubing**

Extra soft red rubber tubing, ideal for gas, water and connections to apparatus in the laboratory.

- Range of bore diameters
- Can be used at high pressure
- Supplied in **1m lengths**



Bore diameter	Order code	1+
3mm	<b>52-3587</b>	1.32
4.5mm	<b>52-3588</b>	1.73
6mm	<b>52-3589</b>	2.14
8mm	<b>52-3590</b>	2.39
9mm	<b>52-3591</b>	2.48
12.5mm	<b>52-3592</b>	3.73

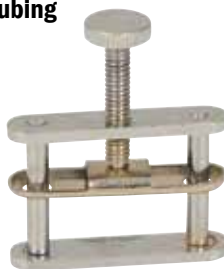
565617



**Hoffmann Type Tubing Clamp 15mm**

A Hoffman tubing clamp, ideal for compressing flexible tubing to allow variable flow regulation, particularly during chemistry experiments.

- Maximum opening 15mm
- Nickel-plated brass construction
- Eisco type **CH0298B**



Type	Order code	1+
15mm tube clamp	<b>52-3322</b>	1.80

565517

**RVFM**

**Flexible PVC Tubing**

This range of flexible PVC tubing is ideal for buggy and vehicle building.

- 3.5mm (internal) tubing is ideal for use with syringes in your pneumatics projects
- 4mm (internal) tubing makes great end stops, ensuring wheels remain in place on axles
- 5mm (internal) tubing is perfect for spacers, between wheels and chassis
- 6mm (internal) tubing, is essential when your vehicle has bigger axle requirements
- Low toxicity PVC
- Also useful for general purpose tubing and sleeving
- Supplied in **lengths of 25m**

Diameter tolerance  $\pm 0.5$ mm.

Type	Order code	1+
3.5mm clear	<b>37-1289</b>	6.94
4mm green	<b>37-1291</b>	8.13
5mm yellow	<b>37-1293</b>	9.95
6mm red	<b>37-1295</b>	14.66

300344



We bring STEM to life

**RVFM**

**Tubing Connectors**



Tubing connectors in a wide range of styles and sizes.

- Ribbed ends for leakproof grip
- Corrosion free polypropylene construction

Technical specification

Order code	Mftrs Part No.	Style	Size
<b>52-1470</b>	CH13080/2	X	6mm
<b>52-1472</b>	CH13080/4	X	8mm
<b>52-1476</b>	CH13085/2	L	6mm
<b>52-1478</b>	CH13085/3	L	8mm
<b>52-1534</b>	CH13075/1	T	6mm
<b>52-1536</b>	CH13075/3	T	8mm
<b>52-1538</b>	CH13075/5	T	10mm
<b>52-1540</b>	CH13075/7	Y	6mm
<b>52-1542</b>	CH13075/8	Y	8mm

Style	Size	Order code	3+
X	6mm	<b>52-1470</b>	0.418

Style	Size	Order code	2+
X	8mm	<b>52-1472</b>	0.482

Style	Size	Order code	6+
L	6mm	<b>52-1476</b>	0.171

Style	Size	Order code	5+
L	8mm	<b>52-1478</b>	0.204

Style	Size	Order code	4+
T	6mm	<b>52-1534</b>	0.268
T	8mm	<b>52-1536</b>	0.29

Style	Size	Order code	3+
T	10mm	<b>52-1538</b>	0.311
Y	6mm	<b>52-1540</b>	0.354

Style	Size	Order code	2+
Y	8mm	<b>52-1542</b>	0.514

122484

**Retort Stands & Clamps**

**RVFM**

**Economy Retort Stands**

These economical retort stands have bases made from enamel-finished steel. The 12mm plated-steel rod screws into the base and can therefore be removed for easier storage.

- Rubber feet for stability
- Small: base 200 x 125mm, height 600mm
- Large: base 225 x 150mm, height 750mm



Type	Order code	1+
200 x 125 x 600mm	<b>52-1305</b>	5.99
225 x 150 x 750mm	<b>52-1307</b>	7.27

300184

## RVFM

## Steel Retort Stand Bases

A range of retort stand bases for use with retort stand rods, etc.

- Heavy steel construction
- Threaded M10 x 1.5 metric thread in centre of short side
- Stove enamelled
- Rubberised anti-slip strips
- Range of sizes

Retort stand rods not included.

Type	Order code	1+
160 x 100mm	06-2122	7.31
200 x 125mm	06-2123	10.20
250 x 160mm	06-2124	10.91
315 x 200mm	06-2125	10.97

533992

## RVFM

## Retort Stand Clamp 4 Prong



This universal retort stand clamp is made from aluminium and has 4 jaws.

- The jaws allow objects from 2 - 90mm in diameter to be clamped securely
- The design of the jaws ensures a firm grip at all angles of opening
- The four interlocking jaws are cork lined
- Overall length is 24cm

Type	Order code	1+
Retort stand clamp	52-0518	4.48

017216

## RVFM

## 3-Prong Clamps

A range of 3-prong clamps with rods that can be attached to a retort stand by means of a boss-head clamp.

- Retort stands and boss-head clamps available separately

Type	Order code	1+
Zinc alloy	06-2126	7.09
Aluminium casting	06-2127	5.67
Die-cast aluminium	06-2128	5.67

534071

## RVFM

## Burette Clamps

These burette clamps attach to retort stands and have rounded steel jaws that open from 10 to 35mm diameter.

- Jaws can be rotated through 360° and locked in any position
- Fits support rods up to 15mm diameter
- Available with or without plastic coated jaws

Type	Order code	1+
Metal jaws	06-2129	4.80
Plastic coated jaws	06-2130	5.45

534072

## RVFM

## Vertical Burette Rack

A polished hardwood rack for storing burettes vertically.

- Upper tier has recesses to locate burettes
- Can take up to 12 burettes
- Size (H x W x D): 455 x 400 x 77mm
- Wall mountable



Type	Order code	1+
Burette rack	06-6914	13.91

019609

## EISCO

## Funnel Stands

Polished wooden funnel stands with clamping screws.

- Rod is approx. 460mm tall x 16mm diameter
- Eisco CH0689 series



Funnels not included.

Type	Order code	1+
Single	52-3600	7.55
Double	52-3601	11.53

565642

## EISCO

## Funnel and Burette Stand

A polished wooden funnel and burette stand with clamping screws for adjusting the height and securing the burette.

- Rod approx. 460mm tall x 16mm diameter
- Base size 290 x 110mm
- Eisco225 type CH0690



Funnel and burette not included.

Type	Order code	1+
Funnel+burette stand	52-3599	10.92

565641

## Test Tubes

See page 242



## EISCO

## Wooden Burette Stands

Stands, designed to support up to two burettes.

The stands are made from polished seasoned hardwood, and have a separate clamping screw for each burette.

- For one or two burettes
- Polished, seasoned hardwood
- Individual clamping screws
- Rod is approx. 460 x 16mm
- Eisco CH0264 series

Burettes not included.

Type	Order code	1+
Single	52-3430	7.55
Double	52-3598	11.13

565580

## EISCO

## Wooden Test Tube Racks

Wooden test tube stands with 22mm diameter holes.

- Width 65mm
- Height 115mm
- Eisco CH0704 series



Test tubes not included.

Number of holes	Order code	1+
6	52-3449	4.04
12	52-3448	6.36

565595

## EISCO

## Disposable Syringe 1ml

An individually packed and sterilised, plastic disposable 1ml syringe.

- Plastic
- Sterilised and individually packed
- Graduated
- Luer fitting
- Capacity 1ml
- Supplied in packs of 100
- Eisco type BI0356A

Type	Order code	1+
1ml syringe (Pack 100)	52-3369	8.67

565548

## ELECTROLUBE

THE SOLUTIONS PEOPLE

## Reusable Syringes

Re-usable syringes.

- Ideal for precise application of glues, greases, pastes and two-part compounds, where a precise amount of each is to be mixed
- Supplied in packs of 10

Type	Order code	1+	5+	10+
20ml	87-0346	12.27	12.09	11.78

035703



**RVFM**

**Re-Usable Syringes**

A range of re-usable syringes, ideal for precise application of glues, greases, pastes and two-part compounds, where a precise amount of each is to be mixed.

- The 12ml syringe has a fine, curved tip, ideal for reaching awkward places



MOQ 2				
Type	Order code	2+	10+	50+
1ml	87-0338	0.535	0.452	0.414
5ml	87-0343	0.607	0.529	0.477
Price each				
Type	Order code	1+	10+	
12ml curved	87-0345	3.17	2.98	

061886

**RVFM**

**Syringe 100ml Glass**

This glass syringe has a Luer fitting, interchangeable pistons and barrels.

- Capacity 100ml
- Supplied with metal tip



Capacity	Order code	1+
100ml	52-2669	19.95

550596

**Pipettes**

**RVFM**

**Dropping Pipettes**

These dropping pipettes are useful for dispensing liquid from test tubes.

- Both pipettes have soft rubber teats
- Large pipette has a glass body of 125mm length
- Supplied in packs of 10



Type	Quantity	Order code	1+
Large pipette	10	52-1266	6.00

081793

**RVFM**

**Plastic Pipettes Graduated to 3ml**

A small plastic pipette, ideal for dispensing small amounts of liquid.

- Soft bulb is squeezed to suck up and dispense liquid
- Graduated up to 3ml



MOQ 16			
Type	Order code	16+	
Pipette	06-6066	0.064	

080613

**medline**

**Graduated Disposable Pasteur-type Pipettes**

Disposable, graduated Pasteur-type pipettes from Medline, made from transparent, inert, low-intensity polythene.

- Volumetric tolerance  $\pm 10\%$
- Not sterile



- Supplied in packs of 500
- Medline types 200003 (1ml) and 200006 (3ml)

Technical specification					
Nominal capacity	Length	Stem diameter	Total capacity	Bulb draw	Graduations
1ml	154mm	5mm	5ml	3.1ml	0.25ml
3ml	154mm	7.8mm	7ml	3.2ml	0.5ml
Type	Order code	1+			
1ml (Pack 500)	06-7019	7.39			
3ml (Pack 500)	06-7021	7.82			

500327

**isco**

**Pipette Pumps**

A range of fast-release pipette pumps for precise and quick dispensing.

A knurled thumb wheel can be rotated to draw up or dispense liquids, or the release lever can be pushed in for quick emptying. The moulded chuck has a silicon rubber collet inside to hold various standard sized pipettes. The pump resists acids and alkalis and can be easily disassembled for thorough cleaning.

- Knurled thumb wheel
- Quick release lever
- Holds various standard sized pipettes
- Resistant to acids & alkalis
- Can be disassembled for cleaning
- Isco CH0581 series



Capacity	Order code	1+
2ml	52-3426	5.06
10ml	52-3427	5.40
25ml	52-3428	5.61

565579

**Pipette Fillers**

**RVFM**

**Suction Pipette Filler**

A suction type filler for measuring and volumetric pipettes.

- Rubber squeeze bulb with valves
- 50cc capacity
- Withstands acids and other hazardous chemicals
- Features 3 flow control valves, that are opened by squeezing

Colour supplied will vary.

Type	Order code	1+
Pipette filler	52-8058	4.43

075361

**RVFM**

**Rubber Bulbs for Pipettes**



Rubber bulbs for filling pipettes.

- Ideal for filling pipettes, etc., especially with corrosive or harmful chemicals
- Pear-shaped bulbs available in 5, 15 and 50ml capacities
- Dropper test available in large size

**Burettes**

**RVFM**

**Stopcock Burette with Rotaflow 50ml Capacity**

A large borosilicate glass burette with a Rotaflow stopcock to accurately control the efflux of liquids.

- Liquid capacity 50ml
- Length 750mm
- Diameter of measurement tube 14mm
- Outlet diameter 7mm tapering to 2mm
- Graduated 0 to 50 with subdivisions
- Features a Rotaflow type stopcock
- Manufactured from borosilicate glass

Type	Order code	1+
Burette with Rotaflow	52-1260	6.95

081791

**RVFM**

**Straight Bore Burettes with PTFE Stopcocks - Class B**



Graduated straight bore burettes.

- PTFE stopcocks for smooth turning
- Accuracy class B
- Supplied singly

Capacity	Tolerance	Order code	1+
25ml	0.06ml	52-1030	12.08
50ml	0.10ml	52-1032	12.15

073144

**RVFM**

**Acrylic Burettes**

Burettes with acrylic bodies and leakproof stopcocks fitted with self-lubricating PTFE plugs.

- Individually calibrated for maximum accuracy
- Acrylic body is unaffected by dilute acids and bases except hydrofluoric acid and ammonium hydroxide
- pH range 1 to 14
- Can be used up to 5% wt/wt of acids or 30% base
- Material: polymethyl methacrylate/TPX
- Available in 50 and 100ml capacities

Technical specification			
Capacity	50ml	100ml	
External diameter	15mm	18mm	
Internal diameter	13mm	14mm	
Overall length	745mm	825mm	

Type	Order code	1+
50ml	52-1454	6.20
100ml	52-1456	10.23

122489

## Filter Paper

**RVFM**

### Filter Paper



High quality filter paper available in 110 and 125mm diameters.

- Available in 110mm and 125mm diameters
- Supplied in **boxes of 100**

Type	Order code	1+
110mm	<b>52-0148</b>	2.56
125mm	<b>52-0150</b>	3.18

066650

**eisco**  
Trust • Deliver • Learn

### Premium Filter Paper - Packs of 100

Qualitative filter paper for use in the chemistry laboratory.

- Range of diameters
- Supplied in **packs of 100**
- Eisco CH0390 series



Diameter	Order code	1+
90mm	<b>52-3549</b>	1.12
110mm	<b>52-3550</b>	1.32
125mm	<b>52-3551</b>	1.78
150mm	<b>52-3552</b>	2.91

565630

**RVFM**

### Qualitative Filter Papers

This high-quality **filter paper** is ideal for use particularly in schools and colleges for **qualitative analysis** in chemistry experiments.

- Available in a range of sizes
- Supplied in **packs of 100**



Diameter	Order code	1+
90mm	<b>52-2179</b>	1.77
110mm	<b>52-2180</b>	2.26
125mm	<b>52-2181</b>	2.85
150mm	<b>52-2182</b>	3.74

549138

## Chromatography Paper

**RVFM**

### Chromatography Paper

This **chromatography paper** is supplied on reels of 100m.

- Width 40mm
- Whatman Grade 1

Width	Length	Order code	1+
40mm	100m	<b>52-2759</b>	45.99

550644



## Cotton Wool

**RVFM**

### Absorbent Cotton Wool

This absorbent white **cotton wool** is suitable for use in the laboratory, classroom, workplace and the home.

- Hospital quality
- Supplied in **packs of 500g**



Pack size	Order code	1+
500g	<b>52-2756</b>	5.75

550041

## Indicator Test Paper

*Johnson*  
TEST PAPERS

### Indicator Papers



Indicator papers available in a range of types and pack sizes.

- Supplied in convenient plastic dispensers
- Universal pack includes pH indicator scale
- **Pack of 200** contains 10 books of 20 strips 10mm wide
- **Pack of 100** contains 100 loose strips 10mm wide
- **5m pack** contains a single continuous strip 7mm wide

#### Technical specification

Order code	Mfrs Part No.	
<b>52-8000</b>	TES001X	Blue litmus 200
<b>52-8002</b>	TES1001L	Blue litmus 100
<b>52-8004</b>	TES001	Blue litmus 5m
<b>52-8006</b>	TES003X	Red litmus 200
<b>52-8008</b>	TES1003L	Red litmus 100
<b>52-8010</b>	TES003	Red litmus 5m
<b>52-8012</b>	TES002X	Ph 1-11 univ. 200
<b>52-8014</b>	TES1002L	Ph 1-11 univ. 100
<b>52-8016</b>	TES002	Ph 1-11 univ. 5m
<b>52-8018</b>	TES020X	Ph 1-14 univ. 200
<b>52-8020</b>	TES1202L	Ph 1-14 univ. 100
<b>52-8022</b>	TES004	Ph 1-14 univ. 5m

#### Price each

Type	Qty/length	Order code	1+
Blue litmus	200	<b>52-8000</b>	2.93
Blue litmus	100	<b>52-8002</b>	1.25
Blue litmus	5m	<b>52-8004</b>	2.16
Red litmus	200	<b>52-8006</b>	2.93

#### MOQ 10 - In Multiples of 10

Type	Order code	10+
Red litmus	<b>52-8008</b>	1.25

#### Price each

Type	Order code	1+
Red litmus	<b>52-8010</b>	2.16
Ph 1-11 universal	<b>52-8012</b>	3.18
Ph 1-11 universal	<b>52-8014</b>	1.65
Ph 1-11 universal	<b>52-8016</b>	2.27
Ph 1-14 universal	<b>52-8018</b>	3.41
Ph 1-14 universal	<b>52-8020</b>	1.87
Ph 1-14 universal	<b>52-8022</b>	2.27

075339

**RVFM**

### Clinical Test Strips



These **clinical test strips** are suitable for use in testing for glucose or protein.

- Supplied in packs of 50

Type	Pack size	Order code	1+
Diastix	50	<b>52-2611</b>	6.75
Albustix	50	<b>52-2612</b>	9.46

550549

## Spotting Tiles

**eisco**  
Trust • Deliver • Learn

### Porcelain 12 Cavity Spotting Tiles

These laboratory spotting plates have 12 cavities and are glazed on their tops and sides.

- 12 cavities
- Material: porcelain
- Supplied in **packs of 10**
- Eisco type CH0542B



Type	Order code	1+
Spotting tiles (10)	<b>52-3401</b>	12.70

565559

## Evaporating Dishes

**eisco**  
Trust • Deliver • Learn

### Porcelain Evaporating Dishes

Superior quality porcelain round-form evaporating dishes with pouring spout. The dishes are fully glazed except for the outside base.

- Eisco CH0071 series



Capacity	Order code	1+
80ml	<b>52-3378</b>	0.868
100ml	<b>52-3379</b>	0.919

565554

**eisco**  
Trust • Deliver • Learn

### Evaporating Basins - Porcelain Flat Form with Spout

A range of porcelain flat-form evaporating basins.

- Glazed inside and outside except for rim
- Spout for easy pouring
- Eisco CH0070 series



Capacity	Order code	1+
35ml	<b>52-3519</b>	0.807
50ml	<b>52-3520</b>	0.889
100ml	<b>52-3521</b>	1.01
200ml	<b>52-3522</b>	1.15
300ml	<b>52-3523</b>	2.34

565527

## Pestle & Mortars

**eisco**  
Trust & Deliver Education

### Porcelain Mortars & Pestles

A range of porcelain mortars and pestles with unglazed grinding surfaces.

- Supplied as a set containing one mortar and one pestle



Mortar capacity	Order code	1+
60ml	<b>52-3571</b>	1.22
275ml	<b>52-3572</b>	2.52
550ml	<b>52-3573</b>	4.04
900ml	<b>52-3574</b>	4.38
1500ml	<b>52-3575</b>	7.55
2000ml	<b>52-3576</b>	10.21

565633

## Crucibles

**eisco**  
Trust & Deliver Education

### Crucibles - Tall

A range of tall-form porcelain crucibles and lids with ring handle.

- Glazed inside and outside except base
- Eisco CH0074 series



Capacity	Order code	1+
10ml	<b>52-3542</b>	0.501
25ml	<b>52-3543</b>	0.633
40ml	<b>52-3544</b>	0.766
50ml	<b>52-3545</b>	0.909
100ml	<b>52-3546</b>	1.21

565629

## Tongs & Holders

**eisco**  
Trust & Deliver Education

### Wooden Test Tubes Holders with Spring (Pack of 10)

A 180mm long clothes peg-style, wooden test tube holder.

- Accepts 11 to 19mm diameter test tubes
- Jaws open to 32mm
- Made from wood with a metal spring
- Supplied in **packs of 10**
- Eisco type CH0726A

Test tube not included.



Type	Order code	1+
Test tube holders	<b>52-3386</b>	4.69

565660

**RVFM**

### Metal Test Tube Holder



A Stoddard's pattern test tube holder ideal for students.

- Spring action clamps tubes in place
- Finger grips for safe holding
- Holds tubes up to 25mm diameter
- Nickel plated steel construction
- Overall length 130mm

Type	Order code	MOQ 2
Test tube holder	<b>52-8040</b>	0.593

075355

**RVFM**

### 200mm Crucible Tongs



200mm crucible tongs available in economy and stainless steel models. These tongs are essential for the safe handling of hot crucibles.

- Length 200mm
- Economy or Stainless Steel models

Type	Order code	1+
Economy	<b>52-0515</b>	1.02
Stainless Steel	<b>52-0517</b>	1.91

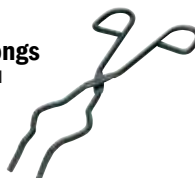
300783

**RVFM**

### Bowed Laboratory Tongs

High quality polished mild steel crucible tongs.

- Length 200mm
- Bowed jaws
- Supplied in **packs of 5**



Type	Order code	1+
Bowed tongs	<b>52-0158</b>	7.20

070950

**RVFM**

### Economy Beaker Tongs with Plastic Jaws



Nickel-plated steel tongs with non-slip plastic-coated jaws, ideal for handling laboratory utensils like beakers, large crucibles, evaporating dishes and other round labware.

- Plastic covered jaws for good grip
- Jaws open to 115mm (4.5in.)
- Holds 50 to 2000ml beakers
- Length 240mm (9.5in.)

Type	Order code	1+
Tong (plastic jaws)	<b>52-0461</b>	2.13

501655

**Rapid**  
education

We bring  
STEM to life

**RVFM**

### Radioactive Source Handling Tongs



These custom designed stainless steel tongs are ideal for handling **radioactive** sources.

- Dimensions (W x L): 12 x 165mm

Size	Order code	1+
12 x 165mm	<b>52-2698</b>	10.73

565622

## Spatulas, Spoons & Scoops

**eisco**  
Trust & Deliver Education

### Laboratory Spatulas, Spoons and Pick Scoops

A range of general purpose laboratory spatulas, spoons and scoops, ideal for use in the chemistry laboratory.



Type	Length	Order code	1+
Spatula/spoon	150mm	<b>52-3429</b>	0.478
Spatula/spoon	200mm	<b>52-3372</b>	3.39
Chattaway	150mm	<b>52-3528</b>	0.603
Chattaway	200mm	<b>52-3529</b>	0.705
Pick scoop	160mm	<b>52-3570</b>	3.01
Polypropylene	150mm	<b>52-3583</b>	0.266
Polypropylene	200mm	<b>52-3584</b>	0.337

565651

**RVFM**

### Spatulas with Spoons

Stainless steel laboratory spatulas with a spoon bowl at one end and a rectangular flat at the other.



- Available in 120 and 150mm lengths

Type	Order code	MOQ 2
120mm	<b>52-1275</b>	0.74

Type	Order code	Price each
150mm	<b>52-1277</b>	0.47

502653

More products online – visit [www.rapidonline.com](http://www.rapidonline.com)





### Deflagrating Spoon and Cap

A deflagrating spoon consisting of a steel cup and rod held by a cork in the aluminium cap.

- Steel cup and rod
- Aluminium cap
- Length 350mm
- Diameter of cap 90mm
- Diameter of cup 18mm
- Eisco type CH0520



Type	Order code	1+
Deflagrating spoon	52-3418	1.42

565676



### Nuffield Spatulas

These Laboratory spatulas, made of high quality mild polished steel offer good value for money.

- Length 140mm
- Supplied in **packs of 5**



Type	Order code	1+
Nuffield spatula	52-0164	2.13

082559



### Chattaway Stainless Steel Spatulas



Double-ended stainless steel spatulas, ideal for loading small amounts of powdered or granular chemicals into test tubes, flasks, etc. One end is flat with a square end, the other end is rounded with an angled tip.

- Stainless steel
- Available in 100, 130, 150 and 200mm lengths

#### MOQ 2

Type	Order code	2+
100mm	52-9033	0.804

#### Price each

Type	Order code	1+
130mm	52-9031	0.954
150mm	52-9035	0.50
200mm	52-9037	1.61

502651

## Free Delivery\*

on all orders over £30 (excl. VAT)  
(UK mainland only)

\* See Terms & Conditions for full details - [www.rapidonline.com/terms](http://www.rapidonline.com/terms)

## Stirring Rods



### Laboratory Stirring Rods

A range of general-purpose stirring rods, ideal for many jobs in the chemistry laboratory.

#### Technical specification

Order code	Type	Length	Diameter	Material
52-3580	Policeman rod	245mm	6mm	Polypropylene
52-3581	Glass stirring rod	200mm	7mm	Glass
52-3582	Button end glass rod	300mm	7mm	Glass

Type	Order code	1+
Policeman rod	52-3580	0.439
Glass stirring rod	52-3581	1.42
Button end glass rod	52-3582	2.75

565636



### Glass Stirring Rods



6mm diameter glass stirring rods.

- Simax Borosilicate glass
- Supplied in **packs of 10**

Type	Order code	1+
125mm	52-1006	5.21
150mm	52-1008	6.00
200mm	52-1010	6.32
300mm	52-1012	6.79

073141

## Tweezers



### Disposable Plastic Tweezers

Disposable plastic forceps/tweezers for general purpose use in the laboratory.

- Length 110mm
- Serrated jaw tips
- Supplied in **packs of 12**
- Eisco type B10177



Type	Order code	1+
Disposable tweezers	52-3703	8.67

565676



### Plastic Tweezers

Economical, plastic tweezers, ideal for science and as an assembly aid for small components.

- Serrated tips
- Locating lugs hold tips straight when closed
- Made from recyclable ABS plastic
- Length approx. 110mm



Type	Order code	1+	7+
Plastic tweezers	06-6064	0.15	0.18

080612

## Bottles



### Clear Dropping Bottles 50ml

These 50ml clear soda-lime glass dropping bottles have a stopper size of 14.5/23.

- Supplied **singly**



Type	Order code	1+
50ml single	52-0837	2.34

066661



### Reagent Bottles

Plain clear glass reagent bottles, with narrow neck and dustproof plastic stopper.

- Supplied in **packs of 10**



Type	Order code	1+
50ml	52-0226	17.85
250ml	52-0230	30.00

066662



### Clear Graduated Laboratory Bottles

Clear, graduated laboratory bottles with screw caps.

- Borosilicate glass
- Complete with blue screw cap and pouring ring
- Conform to **ISO 4796** and **ISO -GL 45**
- Supplied in **packs of 10**



Type	Order code	1+
100ml	52-0986	20.05
250ml	52-0988	22.42
500ml	52-0990	27.16
1000ml	52-0992	45.79

073137



### Polystyrene Containers

Medline polystyrene containers with polyethylene lids, ideal for the collection of biological samples or the storage of small amounts of chemicals.

- Ideal for samples
- Polystyrene containers
- Polyethylene screw-on lids
- Non-sterile
- Supplied **singly**



Technical specification					
Capacity	Bottom diameter	Top diameter	Height	Medline type	Order code
30ml	25.1mm	30.8mm	92.5mm	309202	56-1517
60ml	39.3mm	44.2mm	66mm	309502	56-1519
200ml	58mm	62mm	95mm	309903	56-1521

MOQ 6		
Type	Order code	6+
30ml	<b>56-1517</b>	0.14
60ml	<b>56-1519</b>	0.162
MOQ 2		
Type	Order code	2+
200ml	<b>56-1521</b>	0.545

500329

## medline

### Polypropylene Containers

Medline polypropylene containers with polyethylene lids, ideal for the collection of biological samples or the storage of small amounts of chemicals.

- Ideal for samples
- Polyethylene screw-on lids
- Non-sterile
- Supplied **singly**



Technical specification					
Capacity	Bottom diameter	Top diameter	Height	Medline type	Order code
60ml	38.8mm	44.2mm	66.1mm	409502	<b>56-1523</b>
125ml	56.3mm	62.1mm	74.3mm	409702	<b>56-1525</b>
200ml	56.5mm	62.2mm	115.5mm	409902	<b>56-1527</b>

MOQ 6		
Type	Order code	6+
60ml	<b>56-1523</b>	0.162
125ml	<b>56-1525</b>	0.227
MOQ 4		
Type	Order code	4+
200ml	<b>56-1527</b>	0.311

500330

## Rapid

### Measuring Bottle Set



Set of five **graduated bottles** with lids, suitable for **measuring** and holding a wide range of liquids.

- Bottles in 5 sizes ranging from 200ml to 3000ml
- Capacities marked in metric and imperial scales on opposite sides of bottle
- Bottles nest for easy storage

Type	Order code	1+
Set of 5	<b>06-9937</b>	13.18

563474



### Round Narrow Mouth Bottles

A range of lightweight general-purpose polythene storage bottles.

- 5 litre bottle has carrying handle
- Supplied **singly**



Technical specification						
Nom Capacity	Actual Capacity	Height	Body	Neck	Material	Order Code
ml	mm	mm	mm	mm		
125	138	112	48	15	LD Polythene	<b>14-2000</b>
250	280	139	60	15	LD Polythene	<b>14-2002</b>
1000	1080	197	94	21	HD Polythene	<b>14-2006</b>
5000	5300	295	176	36	HD Polythene	<b>14-2010</b>

MOQ 4		
Capacity	Order code	4+
125ml	<b>14-2000</b>	0.311
MOQ 3		
Capacity	Order code	3+
250ml	<b>14-2002</b>	0.419
MOQ 2		
Capacity	Order code	2+
1000ml	<b>14-2006</b>	0.59
Price each		
Capacity	Order code	1+
5000ml	<b>14-2010</b>	13.29
MOQ 9		
Capacity	Order code	9+
Dispenser cap	<b>14-2036</b>	0.124

034396



### Round Wide Mouth Bottles

Wide mouthed bottles for general-purpose storage.

- Made from high density polythene



Technical specification						
Nom Capacity	Actual Capacity	Height	Body	Neck	Material	Order Code
ml	mm	mm	mm	mm		
100	123	91	47	35	HD Polythene	<b>14-2012</b>
250	254	114	59	40	HD Polythene	<b>14-2014</b>
500	518	147	74	40	HD Polythene	<b>14-2016</b>
1000	1100	195	93	49	HD Polythene	<b>14-2018</b>
2500	2800	218	140	70	HD Polythene	<b>14-2020</b>

MOQ 3		
Type	Order code	3+
Rd wide mouth 100ml	<b>14-2012</b>	0.376
Rd wide mouth 250ml	<b>14-2014</b>	0.376
MOQ 2		
Type	Order code	2+
Rd wide mouth 500ml	<b>14-2016</b>	0.526
Rd wide mouth 1000ml	<b>14-2018</b>	0.697
Price each		
Type	Order code	1+
Rd wide mouth 2500ml	<b>14-2020</b>	2.10

034398



### Wide Mouth Bottles with Sealing Cap

Strong, light, general-purpose wide-mouth bottles with sealing caps.

- Made from HD polythene
- Supplied **singly**



Technical specification						
Nom capacity	Actual capacity	Height	Body	Neck	Material	Order code
ml	mm	mm	mm	mm		
300	344	113	70	48	HD Polythene	<b>14-2038</b>
700	775	169	86	48	HD Polythene	<b>14-2008</b>
1250	1348	213	102	48	HD Polythene	<b>14-2040</b>

MOQ 2		
Type	Order code	2+
Rd wide seal, bottle 300ml	<b>14-2038</b>	0.601
Rd wide seal, bottle 700ml	<b>14-2008</b>	0.761
Price each		
Type	Order code	1+
Rd wide seal, bottle 1250ml	<b>14-2040</b>	0.997

034399



### Wash Bottles

A high quality wash bottle with washing tube.

- Simply squeeze to provide jet of liquid
- Available in **250ml** and **500ml** capacities
- Supplied **singly**



Type	Order code	1+
Round wash bottle 250ml	<b>14-2022</b>	1.38
Round wash bottle 500ml	<b>14-2024</b>	1.81

034400

## RVFM

### Wash Bottles

Translucent, unbreakable wash bottles with built-in delivery tubes.

- Graduations on outer surface
- Low density polyethylene (LDPE) construction
- Available in **125, 250** and **500ml** capacities



Type	Order code	1+
125ml	<b>52-1462</b>	1.28
250ml	<b>52-1458</b>	1.45
500ml	<b>52-1460</b>	1.79

122480

## RVFM

### Polypropylene Storage Vials

Storage vials for biological material, human and animal cells, etc.

- Leak-proof built-in seal
- Corrosion free polypropylene construction
- Available in 2ml and 5ml capacities



MOQ 6		
Type	Order code	6+
2ml	<b>52-1520</b>	0.171
MOQ 4		
Type	Order code	4+
5ml	<b>52-1522</b>	0.247

122504

## Quick & Easy Online Ordering

Save time, and place your order at:  
**www.rapidonline.com**

24 hours a day

## Coplin Jars

**RVFM**

### Coplin Jar

A Coplin jar that can hold ten 1 x 3 inch slides back-to-back.

- Interior is grooved to hold slides upright
- Microwaveable
- Domed, shallow threaded screw cap protects slides
- Corrosion free polypropylene construction



Type	Order code	1+
Coplin jar	52-1512	1.28

122501

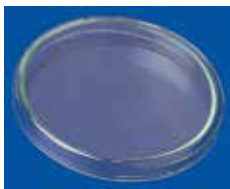
## Petri Dishes & Racks

**RVFM**

### Autoclaveable Glass Petri Dishes

Clear glass petri dishes with lids. Can be autoclaved at a temperature of 120°C.

- Supplied in packs of 18



Type	Order code	1+
60 x 12mm	52-0240	15.92
100 x 15mm	52-0242	19.04

066661

**medline**

### 55mm 4-Vent Petri Dishes

These Aseptic 55mm Petri Dishes from Medline are made from polystyrene and have 4 vents. They are supplied in packs of 10 and are suitable for use with automatic filling machines.



- Diameter 55mm
- Height 14mm
- Supplied in packs of 10
- Medline type 200201

Type	Order code	1+
Petri Dishes (10)	52-0179	1.06

500335

**medline**

### 90mm Triple Vent Petri Dishes

These Aseptic Petri Dishes from Medline are made from polystyrene and have 3 vents. They are supplied in packs of 20 and are suitable for use in automatic filling machines.



- Diameter 90mm
- Height 14mm
- Side mark for orientation
- Writing area on bottom
- Supplied in packs of 20
- Medline type 200200.5

Type	Order code	1+
90mm triple (20)	52-0173	1.81

500404

**RVFM**

### Petri Dishes

Clear, economical unbreakable petri dishes.

- Corrosion free polypropylene construction
- Autoclavable
- Available in 50, 125 and 150mm diameters



MQQ 4

Type	Order code	4+
50mm	52-1528	0.236

Price each

Type	Order code	1+
125mm	52-1530	1.06
150mm	52-1532	1.45

122506

**eISCO**

### Clear Acrylic Petri Dish Racks



Clear acrylic racks with white polycarbonate posts for holding and transporting petri dishes.

The racks can be very useful during inoculation, incubation and storage as the excellent visibility from all sides enables the culture to be seen and checked during incubation.

- Available in sizes to suit 60mm and 90mm dishes
- Eisco CH0376 series

Dish size	Order code	1+
60mm	52-3578	33.70
90mm	52-3577	27.53

565634

**medline**

### Triple Compartment Petri Dishes 90mm

Aseptic polystyrene Petri Dishes with 3 compartments and 3 vents from Medline. The dishes are supplied in packs of 20, packed in heat-sealed bags. They are suitable for use in automatic filling machines.

- 90mm diameter x 14mm high
- Aseptic polystyrene
- 3 compartments
- 3 vents
- Suitable for use in automatic filling machines
- Supplied in packs of 20 in heat-sealed bags
- Medline type 200203



Type	Order code	1+
90mm Petri dishes	52-0169	3.53

500334

**Rapid**  
education

We bring  
STEM to life

## Measuring Cylinders

**SIMAX**

### ISO 4788 Class B

### Measuring Cylinders

This range of glass measuring cylinders have a hexagonal base and white graduation marks.

- ISO 4788 approved



Type	Order code	1+
10ml	52-0192	3.37
50ml	52-0196	3.95
100ml	52-0198	4.32
250ml	52-0200	6.26

066661

**ACADEMY**

### ISO 4788 Class B

### Borosilicate Glass

### Measuring Cylinders

Measuring Cylinders from the Academy range of Borosilicate Glass laboratory volumetrics equipment.

- Borosilicate glass
- Round base
- Pouring spout
- Bronze graduations
- ISO 4788 class B



Type	Order code	1+
10ml	52-1431	1.54
25ml	52-1433	1.49
50ml	52-1435	1.66
100ml	52-1437	2.29
250ml	52-1439	2.99

516961

**RVFM**

### Plastic Measuring Cylinders

High quality, laboratory grade measuring cylinders made from polypropylene.

- Clear graduation markings on the side
- 25ml and 50ml sizes supplied in packs of 12
- 10ml, 100ml and 250ml sizes supplied singly





MOQ 3			
Type	Quantity	Order code	3+
10ml (single)	1	<b>52-0177</b>	0.418
Price each			
Type	Quantity	Order code	1+
25ml	12	<b>52-0172</b>	6.42
50ml	12	<b>52-0174</b>	7.49
MOQ 2			
Type	Quantity	Order code	2+
100ml	1	<b>14-2030</b>	0.74
Price each			
Type	Quantity	Order code	1+
250ml	1	<b>14-2032</b>	1.45

**Rapid**

## Graduated Cylinders Set



These **cylinders** are made from clear polystyrene with easy to read **graduations**.

- Convenient for all experiments
- Supplied in set of 7

Sizes: 10, 25, 50, 100, 250, 500 and 1000ml.

Type	Order code	1+
Pack of 7	<b>06-9934</b>	17.05

## Measuring Beakers

**eisco**  
 Trust & Safety - Quality

### Polypropylene Measuring Jugs

A range of clear polypropylene measuring jugs with good chemical resistance.

- Graduations every 10ml
- Can be autoclaved
- Eisco CH0356 series



Capacity	Order code	1+
250ml	<b>52-3373</b>	1.03
500ml	<b>52-3374</b>	1.38
1000ml	<b>52-3375</b>	1.59

**RVFM**

### Plastic Laboratory Measuring Beakers

Polypropylene measuring beakers with moulded graduations for ease of use.

- 50ml, 100ml, 250ml and 500ml supplied in **packs of 12**
- 1 litre beakers supplied in **packs of 6**



Type	Order code	1+
50ml pack 12	<b>52-0176</b>	3.42
100ml pack 12	<b>52-0178</b>	3.52
250ml pack 12	<b>52-0180</b>	5.66
500ml pack 12	<b>52-0182</b>	8.56
1 Litre pack 6	<b>52-0184</b>	7.37

**Rapid**

## Measuring Jugs



These graduated **jugs** can be used to **measure** and hold a wide range of liquids and quantities of dry goods.

Technical specification

Order code	Mitrs Part No.	Sizes
<b>06-9936</b>	37025	250, 500, 1000ml
<b>06-9938</b>	52084	1000ml

Sizes	Order code	1+
250, 500, 1000ml	<b>06-9936</b>	4.46
1000ml	<b>06-9938</b>	1.75

**Rapid**

## Measuring Beakers



These **graduated beakers** can tolerate temperatures up to 120°C and are ideal for use in the classroom, laboratory or even the kitchen.

- Made from polypropylene
- Supplied in a set of 5

Set includes sizes: 50ml, 100ml, 250ml, 500ml, 1000ml.

Type	Order code	1+
Set of 5	<b>06-9935</b>	5.23

**Rapid**

## Measuring and Pouring Set



These **containers** are ideal for **measuring** and pouring liquids, sand and a variety of other materials in the classroom, laboratory or kitchen.

Set includes: 3 measuring jugs (250ml, 500ml and 1000ml); measuring spoons and a dry measure cups set.

Type	Order code	1+
Set of 3	<b>06-9939</b>	8.15

**ACADEMY**  
 Science Products

## Low Form Beakers

Low Form Borosilicate Glass Beakers from the Academy laboratory glassware range.

- Borosilicate Glass
- Supplied in **packs** - see below for pack sizes



Capacity	Pack Size	Order code	1+
50ml	12	<b>52-0949</b>	7.77
100ml	12	<b>52-0951</b>	8.34
250ml	12	<b>52-0953</b>	8.79
400ml	12	<b>52-0961</b>	12.69
600ml	6	<b>52-0955</b>	7.67
1000ml	6	<b>52-0959</b>	17.53

**SIMAX**

## Beakers

A range of low form glass beakers with white graduations.

- High quality borosilicate glass
- 50ml: graduations at 10 and 25ml
- 100ml: graduations at 25, 50 and 75ml
- 250ml: graduations at 50, 100, 150 and 200ml
- 400ml: graduations at 100, 200 and 300ml
- 600ml: graduations at 100, 200, 300, 400 and 500ml
- 1000ml: graduations at 200, 400, 600 and 800ml
- ISO 3819 approved
- Supplied in **packs of 10**



Type	Order code	1+
50ml	<b>52-0202</b>	14.53
100ml	<b>52-0204</b>	12.79
250ml	<b>52-0206</b>	14.84
400ml	<b>52-0208</b>	16.74
600ml	<b>52-0210</b>	21.00
1 litre	<b>52-0212</b>	33.00

**RVFM**

## 1000ml Squat Form Polypropylene Beakers

Squat form beakers with moulded graduations and spout.

- Capacity 1000ml
- Made from polypropylene plastic
- Supplied in **packs of 5**



Capacity	Order code	1+
1000ml	<b>52-0983</b>	4.68

## How do I ...

Email baskets?  
 Register Online?  
 Find invoices?

[www.rapidonline.com/schools-faq](http://www.rapidonline.com/schools-faq)

## Flasks

### RVFM

#### Economy Conical Flasks

Economical Conical or Erlenmeyer Flasks made from borosilicate glass.

- Borosilicate glass
- Graduated

Type	Order code	1+
100ml	52-0975	0.90
250ml	52-0977	1.73
500ml	52-0979	2.75



502648

### ACADEMY

#### Conical Flasks

Narrow Neck Conical, or Erlenmeyer Flasks in Borosilicate Glass from the Academy laboratory glassware range.

- Borosilicate Glass
- Narrow necks
- Supplied in packs - see below for pack sizes



516963

Capacity	Pack size	Order code	1+
100ml	24	52-0969	24.63
250ml	6	52-0971	8.15
500ml	6	52-0973	13.64

### SIMAX

#### Conical Flasks

Narrow neck glass conical flasks with white graduations.

- ISO 1773 approved
- Supplied in packs of 10



066659

Type	Order code	1+
100ml	52-0214	15.63
250ml	52-0216	17.21

### RVFM

#### Round Bottom Flasks

These round bottomed flasks are made from borosilicate glass and are ideal for use in the biology or chemistry laboratory.

- Available in 250ml and 500ml sizes



550636

Capacity	Order code	1+
250ml	52-2749	6.10
500ml	52-2750	6.66

### RVFM

#### Class B Volumetric Flasks

Volumetric flasks made from Borosilicate glass with polythene stoppers. The flasks have a single mark at their stated capacity, with an accuracy in compliance with class 'B' of ISO 1042.

- Made from Borosilicate glass
- Polythene stoppers
- Single mark at stated capacity
- Accuracy in compliance with class 'B' of ISO 1042



#### Technical specification

Capacity (ml)	Accuracy (ml)	Stopper size	Order code
50	±0.12	12/21	52-9141
100	±0.2	14/23	52-9143
250	±0.3	14/23	52-9147
1000	±0.8	24/29	52-9151

Type	Order code	1+
50ml	52-9141	3.49
100ml	52-9143	3.93
250ml	52-9147	8.66
1000ml	52-9151	11.83

502645

### SIMAX

#### Volumetric Flasks with Plastic Stoppers

Volumetric flasks with plastic stoppers.

- Class B
- Simax Borosilicate glass
- Conform to ISO 1042
- Supplied in packs of 10



Type	Order code	1+
100ml	52-0998	32.53
250ml	52-0999	47.84

073138

## Test Tubes

### RVFM

#### Test Tubes with Side Arms

These test tubes are made from Borosilicate glass and feature a side arm.

- Available in various sizes



Length/dia.	Order code	1+
125 x 17mm	52-1282	0.847
150 x 19mm	52-1284	1.06
150 x 24mm	52-1286	1.49

081798

### KIMBLE CHASE

#### Test Tubes and Boiling Tubes with Rims

These Kimble Chase test tubes are manufactured from borosilicate glass tubing and can be used for a wide range of applications. They are designed for maximum heat transfer and chemical resistance.

- Wall thickness between 0.8 to 1.0mm
- 10 x 75mm, 16 x 125mm and 16 x 150mm tubes are supplied in packs of 100
- 24 x 150mm tubes are supplied in packs of 50

Type	Quantity	Order code	1+
10 x 75mm	Pack 100	52-1895	22.11
16 x 125mm	Pack 100	52-1900	33.16
16 x 150mm	Pack 100	52-1897	44.21
24 x 150mm	Pack 50	52-1902	26.84

123522



### eisco

#### Absorption Tubes 150 x 20mm

A borosilicate glass U-form absorption tube, with strong walls and side tubes. Absorption tubes are commonly used with calcium chloride or other desiccants to remove moisture from gases passed through them.

- Length 150mm
- Diameter 20mm
- Supplied in packs of 2
- Elisco type CH0042C

Type	Order code	1+
Absorption tube	52-3432	3.01

565582



### eisco

#### Distilling Apparatus



A set of high quality borosilicate glassware ideal for distillation experiments.

- All joint sizes are 19/26
- Set includes the following glass components:
- Round-bottom boiling flask 500ml
- Still head
- Liebig condenser
- Receiver adapter
- Separating funnel with stopper
- Supplied as a set
- Elisco type CH0890

Please note that no tubing, heat source or stands are included.

Type	Order code	1+
Distilling glassware	52-3438	51.07

565581



## Interchangeable Glassware Organic Chemistry Kit

A 9-piece set of borosilicate 3.3 glassware for organic chemistry experiments. All items use an ISO 383 standard taper 14/23 joint size for maximum versatility. The set is housed in a die-cut foam-lined storage box.



- **Kit contains:**
  - 1x flask, pear shaped, 50ml
  - 1x still head
  - 1x Liebig condenser
  - 1x screw-cap adapter
  - 1x receiver adaptor
  - 1x air leak / steam inlet tube
  - 1x dropping funnel 50ml with GP rota-flow tap
  - 1x stopper
  - 1x -10 to +110°C thermometer
- **Supplied as a set**
  - Borosilicate 3.3 glass
  - ISO 383 standard taper 14/23 joint size
- **Eisco type CH0876**

Type	Order code	1+
Glassware kit	<b>52-3439</b>	38.77

565385



## Ultra-clear Polypropylene Tubes



These ultra-clear polypropylene tubes from Medline are ideal for use in rough environments where the use of glass tubes is not crucial. The tubes have greater crush resistance and are shatterproof.

- Autoclavable up to 121°C
- Matching natural coloured polyethylene caps available separately
- Supplied in **packs of 100**

Medline type	Internal diameter (mm)	External diameter (mm)	Total length (mm)	Maximum volume (ml)	Order code
400800	10.3	11.7	73.9	5.3	<b>52-1901</b>
400700	10.9	12.7	73.7	6.4	<b>52-1903</b>
400705	13.7	15.8	98.6	12.7	<b>52-1905</b>

Type	Order code	1+
12 x 75mm (100)	<b>52-1901</b>	3.22
13 x 75mm (100)	<b>52-1903</b>	3.59
16 x 100mm (100)	<b>52-1905</b>	4.01
Cap for 52-1901 (100)	<b>52-1909</b>	3.50
Cap for 52-1905 (100)	<b>52-1913</b>	2.23

500336

**No minimum order value  
UK mainland only**

## Test Tube Brushes



### Test Tube Brushes



Brushes for cleaning test tubes and other tubular equipment.

- High quality bristles mounted in heavy gauge twisted galvanised wire
- Wire handles can be bent to clean awkward shapes
- Available in a range of sizes
- Supplied **singly**

Technical specification

Size	Brush area size	Overall length
Small	50 x 17mm dia.	150mm
Medium	75 x 25mm dia.	200mm
Large	75 x 35mm dia.	240mm

Type	Order code	MOQ 4
Small	<b>52-8048</b>	0.256

Type	Order code	MOQ 3
Medium	<b>52-8050</b>	0.363

Type	Order code	MOQ 2
Large	<b>52-8052</b>	0.525

073338



### Cleaning Brushes for Laboratory Glassware and Plasticware



Cleaning brushes for beakers, burettes, test tubes, measuring cylinders and many other items of other laboratory glassware and plasticware. The hard nylon bristles are mounted in twisted galvanised iron wire.

- Suitable for beakers, burettes, test tubes, measuring cylinders and many other items of other laboratory glassware and plasticware
- Hard nylon bristles, mounted in twisted galvanised iron wire

Type	Order code	MOQ 2
Beaker Brush	<b>52-8053</b>	0.697

Type	Order code	Price each
Burette Brush	<b>52-8055</b>	0.954

Type	Order code	MOQ 2
Test Tube Brush	<b>52-8057</b>	0.632

501639



### Flask, Bottle, Burette and Beaker Brushes

A range of brushes for cleaning laboratory equipment.



Type	Order code	1+
Flask / bottle brush	<b>52-3451</b>	0.766
Burette brush	<b>52-3452</b>	1.01
Economy beaker brush	<b>52-3524</b>	0.909
Nylon beaker brush	<b>52-3525</b>	2.75

565597

## Stoppers & Bungs



### Rubber Stoppers

A wide range of rubber stoppers with or without holes.

- Wide range of sizes
- Available with or without holes



Top diameter	Bottom diameter	Holes	Pack size	Order code	1+
Assorted		None	50	<b>52-3356</b>	6.63
16mm	13mm	None	10	<b>52-3420</b>	0.909
16mm	13mm	Yes	10	<b>52-3421</b>	1.01
22mm	19mm	None	10	<b>52-3422</b>	1.22
28mm	25mm	None	10	<b>52-3423</b>	2.75
28mm	25mm	Yes	10	<b>52-3424</b>	2.79
33mm	29mm	Yes	10	<b>52-3440</b>	3.57

565541



### Assorted Cork Tops

Cork stoppers and bungs in a variety of sizes.

- General purpose natural modelling material
- Ideal for adding buoyancy to models
- Supplied in **packs of 100g**



Type	Order code	1+
Cork tops 100g	<b>06-1310</b>	2.03

073058

## Cork Borers



### Cork Borers - Sets of 6 and 12

These sets of cutters are for boring holes into cork stoppers and bungs to allow the insertion of glass or plastic tubes, etc.

A single cutter of the desired diameter is simply twisted round using the handles while applying pressure on to the stopper. A push rod is also included for removing the waste material from within the cutter.



- Sets of cutters for boring holes into cork stoppers
- Allows the insertion of glass or plastic tubes, etc.
- Simply twist round using the handles while applying pressure
- A push rod is included for removing the waste material
- Available in **sets of 6 or 12**

Technical specification

Set	Sizes
6-piece	4, 4.7, 5.4, 6.5, 8.3 and 9.3mm
12-piece	3, 4, 5, 6, 8, 9, 11, 13, 14, 15, 17 and 19mm

Type	Order code	1+
Set of 6	<b>06-6601</b>	23.66
Set of 12	<b>06-6605</b>	53.50

501651



## RVFM

## Cork Borer Sharpener

This useful accessory does exactly what its name suggests - it sharpens tools used for **boring holes** in corks. Ideal for use in the laboratory or at home.



Type	Order code	1+
Cork borer sharpener	52-2746	10.46

550633

## Funnels &amp; Holders



## 100mm Polythene Funnel

This unbreakable polythene laboratory funnel is unaffected by acids and alkalis, etc.

- Diameter 100mm
- Stem length 80mm
- Eisco type CH0454D



Type	Order code	1+
100mm plastic funnel	52-3419	0.501

565517

## RVFM

## Economy Plastic Funnels

A range of economical funnels suitable for a wide range of applications in the laboratory. The funnels are made from unbreakable plastic, making them ideal for younger scientists.

- Economical
- Unbreakable plastic
- Wide range of uses



MQQ 4

Type	Order code	4+
50mm	52-0925	0.268

MQQ 3

Type	Order code	3+
62mm	52-0927	0.311
75mm	52-0929	0.311
100mm	52-0933	0.461

502649

## RVFM

## Long Stem Borosilicate Glass Filter Funnels

Borosilicate glass laboratory funnels with long stems. The longer, non-tapering stems of these funnels are useful when using funnels with tubing and when mounting them in bungs for use with flasks, bottles and retorts, etc.



- Can be used with folded circular filter paper
- Available in a range of diameters

## Technical specification

Diameter (mm)	Stem Diameter (mm)	Order code
50	7	52-0909
75	8	52-0911
100	9	52-0913
125	16	52-0915
150	16	52-0917

Type	Order code	1+
50mm single	52-0909	1.20
75mm single	52-0911	1.92
100mm single	52-0913	2.99
125mm single	52-0915	3.52
150mm single	52-0917	5.30

500177



## Borosilicate Glass Filter Funnels

Borosilicate glass, plain filter funnels with 60° angled sides.

The shape of the funnels makes them ideal for use with a folded circular filter paper.

- Borosilicate 3.3 glass
- Eisco CH0456 series



Diameter	Order code	1+
55mm	52-3465	0.909
75mm	52-3466	1.05

565602



## Porcelain Hirsch Separating Funnels

Hirsch funnels are used for straining and filtering liquids or for separating solids and liquids.

This range is made from porcelain for minimum contamination and ease of cleaning. They can be used in conjunction with filter paper for superior separation.

- Angled sides
- Glazed
- Perforated plate



Diameter	Order code	1+
30mm	52-3562	0.909
40mm	52-3563	1.01
50mm	52-3564	1.38
75mm	52-3565	2.03
100mm	52-3566	2.24

565631

## RVFM

## Porcelain Buchner Funnels

Buchner Funnels are used for straining and filtering liquids or for separating solids and liquids. This range is made from porcelain for minimum contamination and ease of cleaning. They can be used in conjunction with filter paper for superior separation.

- Straight sides
- Perforated plate
- Used for straining and filtering liquids or separating solids and liquids
- Made from porcelain for minimum contamination and easy cleaning
- Can be used in conjunction with filter paper for superior separation
- Available in a range of diameters



Type	Order code	1+
50mm	52-1937	2.42
125mm	52-1945	7.23

501654

## RVFM

## Polypropylene Buchner Funnels

These 2-piece plastic funnels are lightweight, easy to clean and autoclavable. They are much less prone to breakage than the traditional porcelain types.

- Rugged construction
- Top part has perforated filter plate
- Parts snap together to give vacuum seal
- Corrosion free polypropylene construction
- Available in 70 and 130mm diameters



Type	Order code	1+
70mm	52-1498	2.35
130mm	52-1500	4.99

122486

## RVFM

## Powder Funnels

These polythene funnels have wide, parallel stems and are ideal for transferring powders.

- Corrosion free polypropylene construction
- Available in 80, 100 and 150mm diameters



Type	Order code	2+
80mm	52-1502	0.685

Price each

Type	Order code	1+
100mm	52-1504	0.985
150mm	52-1506	1.92

122489

## RVFM

## Funnel Holder

Holders for suspending funnels on retort stands.

- Holds funnels 76 to 152mm
- Supplied with adaptor for 25 to 76mm funnels



- Corrosion free polypropylene construction
- Includes tapered wedges to ensure firm grip on both 9.5mm (3/8in.) and 12.7mm (1/2in.) retort stand rods

Type	Order code	1+
Funnel holder	52-1464	1.97

122481

## RVFM

## Separator Funnel Holder

Holders for suspending separatory funnels on retort stands.

- Front opening gives clear view of solution
- Allows unobstructed placement of funnel
- Corrosion free polypropylene construction
- Includes tapered wedges to ensure firm grip on both 9.5mm (3/8in.) and 12.7mm (1/2in.) retort stand rods



Type	Order code	1+
Separator funnel holder	52-1466	2.55

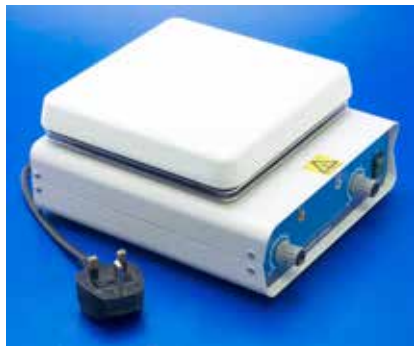
122482

No minimum order value  
UK mainland only

## Hot Stirrers

**medline**  
SCIENTIFIC INSTRUMENTS

### MS-300 Hot Plate Stirrers



The Medline MS-300 Hot Plate Stirrer offers a large heating area of 180 x 180mm and is ideal for use with flat-bottomed vessels. With safe, controlled heating up to 400°C, the Medline MS300 provides a safer, more accurate heat source than the conventional Bunsen burner arrangement. The speed of the built-in magnetic stirrer of the Medline MS-300 Hot Plate Stirrer can be controlled between 100 and 1500rpm.

Also available are two sizes of octahedral stirring bars 15 x 8mm or 25 x 8mm. Both types feature pivot rings.

- Heating area 180 x 180mm
- Temperature up to 400°C
- Stirrer speed 100 to 1500rpm
- Operating voltage 220V AC
- **Medline type MS-300**

Type	Order code	1+
Hot plate stirrer	<b>52-0449</b>	187.46
16mm Stirring bar	<b>52-1029</b>	2.90
25mm Stirring bar	<b>52-1031</b>	3.40

500331

### RVFM Mini Hot Plate



This thermostatically-controlled hotplate can be programmed to maintain a steady temperature anywhere between room temperature and 80 °C. It has a variety of applications, including the investigation of the effect of different materials on the rate of energy transfer.

- Thermochromic film (included) on the top plate changes colour as the top plate heats up
- Area of the plate is 5cm square

Requires a regulated 12V power supply with a current rating of at least 2A.

Type	Order code	1+
Mini hot plate	<b>06-1589</b>	32.08

553712

## Heating Mantles

**medline**  
SCIENTIFIC INSTRUMENTS

### E Series Temperature Controlled Heating Mantles



Medline E Series Temperature Controlled Heating Mantles have Nichrome wire heating elements and woven glass fibre mat mantles. An important addition to any science laboratory, the Medline E Series mantles benefit from rugged steel construction and can heat up to 450°C.

- Nichrome wire heating element
- Mantle made from woven glass fibre mat
- Steel case construction with chemical-resistant coating
- Moulded silica powder thermal insulation
- Temperature range up to 450°C (Max.)
- Power Supply: 220V AC

Capacity	Order code	1+
50ml	<b>52-0451</b>	102.95
100ml	<b>52-0835</b>	124.21
250ml	<b>52-0453</b>	139.21
500ml	<b>52-0455</b>	154.95
1 litre	<b>52-0457</b>	149.95

500332

## Calorimeters

**eisco**  
Trust • Deliver • Learn

### Aluminium and Copper Calorimeters

A range of calorimeters with parallel sides and a rolled rim.

- Available in aluminium or copper
- **Eisco PH0438 & PH0440 series**

Stirrer not included.

Metal	Size	Order code	1+
Aluminium	75 x 50mm	<b>52-3645</b>	1.52
Aluminium	100 x 75mm	<b>52-3644</b>	2.34
Copper	75 x 50mm	<b>52-3647</b>	2.75
Copper	100 x 75mm	<b>52-3646</b>	4.79

563635

**eisco**  
Trust • Deliver • Learn

### Metal Block Calorimeters

A range of metal block calorimeters that can be used for the experimental determination of the specific heat capacity of various metals.

Each cylindrical block has a mass of 1kg adjusted to an accuracy of 2%. The blocks are drilled with two holes: a larger 12.5mm central hole for a special immersion heater and a smaller hole 7.5mm diameter for a thermometer or temperature sensor.

- **Eisco PH0435 series**



Material	Order code	1+
Aluminium	<b>52-3651</b>	14.80
Brass	<b>52-3652</b>	25.49
Copper	<b>52-3653</b>	27.53
Steel	<b>52-3654</b>	10.21

565659

### RVFM

#### Joule's Calorimeter

A Joule's Calorimeter for experimenting with the conversion of electrical energy into heat energy. The calorimeter consists of a nickel-plated copper outer vessel with a lagged copper inner vessel. The cover has terminals for the 3 to 6V heating coil, a built-in stirrer and a hole for a thermometer to record the temperature changes.



- Apparatus for experimenting with the conversion of electrical energy into heat energy
- Nickel-plated copper outer vessel
- Copper inner vessel
- Felted wool cloth lagging
- Outer vessel is 100mm tall and 75mm in diameter
- Inner vessel is 75mm tall and 50mm in diameter
- 3 to 6V heating coil, Max. current 1A
- Built-in stirrer
- Hole for a thermometer (not included)

Type	Order code	1+
Joule's Calorimeter	<b>52-9535</b>	10.50

501638

## Watch Glass

**eisco**  
Trust • Deliver • Learn

### Watch Glasses

Watch glasses are highly functional items of glassware that have a variety of uses in the classroom or laboratory.

They work well as lids for flasks and beakers, or for holding small samples for observation under a low-power microscope. They are also ideal for evaporating liquids from samples, such as when growing seed crystals, and can be used for making lenses from ice or other liquids.

Eisco watch glasses are manufactured with sturdiness in mind. Their 2mm thick construction resists shattering and as they have ground edges, as well as a polished surface, so you can be sure that they are a safe product to handle in the classroom or the laboratory.

- Available in a range of diameters
- **Eisco CH0554 series**

Diameter	Order code	1+
50mm	<b>52-3467</b>	1.73
60mm	<b>52-3559</b>	2.03
75mm	<b>52-3468</b>	3.36
90mm	<b>52-3469</b>	3.93
100mm	<b>52-3470</b>	4.28
125mm	<b>52-3560</b>	7.45
150mm	<b>52-3561</b>	9.18

565603

## Order online

Save time, and place your order at:  
**www.rapidonline.com**  
24 hours a day

## Glass Tubing

**elisco**  
TECHNICAL EQUIPMENT

## Glass Tubing Cutter

This rugged laboratory glass tube cutter is made from nickel-plated, die-cast metal.

It is fitted with a spring-loaded steel wheel and can cut glass tubes up to 40mm in diameter.

- Nickel-plated, die-cast metal
- Spring-loaded steel wheel
- Cuts glass tubes up to 40mm dia.
- Elisco type CH0759SUP

Type	Order code	1+
Glass tubing cutter	52-3569	11.70

565637

**RVFM**

## Soda Glass Tubing

This soda glass tubing is ideal for use in the science laboratory.

- Available in 5mm and 6mm diameter
- Length 0.5m
- Supplied in packs of 30

Diameter	Order code	1+
5mm	52-2751	11.90
6mm	52-2752	12.55

550637

## Gas Washing Bottles

**SIMAX**

## Gas Washing Bottles

Simax gas washing bottles manufactured from borosilicate glass.

- Capacity 100ml
- Overall height 250mm
- Height of bottle 200mm
- Inlet/outlet pipe diameter 8mm
- Supplied singly



Type	Order code	1+
100ml	52-0982	17.58

073136

## Need a product urgently?

We can offer a next day, before noon,  
delivery service  
**01206 751166**

## Trolleys

**SEALEY POWER PRODUCTS**

## 3-Level Workshop Trolley



Composite garage or workshop trolley with each shelf having a capacity of 30kg. Walls on only three sides of shelf allow easy access when adding or removing items to and from trolley. Four large castors, two locking.

- Composite garage or workshop trolley with each shelf having a capacity of 30kg.
- Walls on only three sides of shelf allow easy access when adding or removing items to and from trolley.
- Four large castors, two locking.
- Can also be used as a janitorial trolley.

## Technical specification

Model No: **CX308**  
 Overall Size (W x D x H): 800 x 410 x 930mm  
 Shelf Size (W x D x H): 620 x 410 x 60mm  
 Capacity: 30kg/Level

Type	Order code	1+
3-level trolley	89-7622	69.38

526725

## Digital Stopclock

High accuracy, easy to use unit that can be used either as a standard timer or may be automatically started and stopped by an externally connected device.

- Start, stop and reset via buttons or 4mm terminals
- Make your own timing gates or other triggers

Order code **85-1451**
**£9.71**
