



Biology

Dissection	281	Recycling, Energy & Weather	284
Human Anatomy	280	The Environment	282

Full range of Biology products available at:

www.rapidonline.com

Human Anatomy

eisco
Teach • Deliver • Learn

Human Skeletons

A range of human skeleton models permitting detailed observation of the structure of the human body.

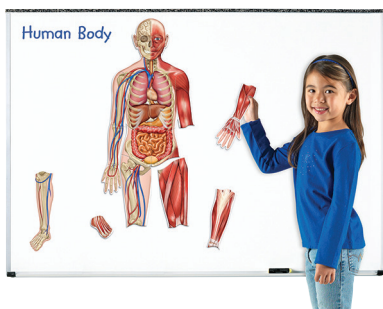


Size	Order code	1+
450mm	52-3516	23.74
510mm	52-3517	64.75
Life size	52-3515	99.00

565625

Learning Resources

Double Sided Magnetic Human Body



This double-sided Magnetic Human Body, from Learning Resources, gives you twice the learning potential with an illustration of the human skeleton on one side and the organs and muscle groups on the other. The 17 pieces combine to create a body more than 90cm tall.

Ideal for use either for a whole class demonstration or with small groups.

- Set of 17 magnetic pieces
- Activity guide included
- Suitable for ages 5+
- Manufacturer's part **LER 6044**

Type	Order code	1+
Magnetic Human Body	06-8962	16.99

517674

eisco
Teach • Deliver • Learn

Enlarged Dental Care Models

These enlarged teeth models are ideal for demonstrating dental care.

- 52-3504 is approximately 330 x 150 x 150mm
- 52-3503 is approximately 530 x 170 x 170mm
- Supplied with large sized brush
- **Eisco AM0050 series**



Size	Order code	1+
330 x 150 x 50mm	52-3504	14.50
530 x 170 x 70mm	52-3503	18.65

565615

eisco
Teach • Deliver • Learn

Human Brain Model - 4 Parts



A high quality, four-piece, hand-painted model, showing fine details of human brain anatomy.

- 4 hand-painted parts
- Supplied with numbered key card
- Approximate size: 190 x 150 x 150mm
- Approximate weight 850g
- **Eisco type AM0020**

Type	Order code	1+
Brain model	52-3506	38.86

565617

eisco
Teach • Deliver • Learn

300x Life-Size Human Skin Model

This 300 times life-size model represents a comprehensive cross-section through human skin. It shows details of the three layers, sebaceous and sweat glands, hair follicles, erector muscles, arteries, nerves, veins and more.

- 300 times life-size
- Mounted on a base
- Many structures are numbered
- Supplied with numbered key card
- Hand painted
- **Eisco type AM0318**



Type	Order code	1+
Human skin model	52-3509	21.48

565619

eisco
Teach • Deliver • Learn

Human Eye Model 3D

This high quality seven-piece, hand-painted model shows fine details of the human eye.

The upper half of the sclera with cornea and eye muscle attachments, both halves of choroids with iris and retina, lens, and vitreous humour are all removable.

- 3x life size
- Approximate size 120 x 120 x 170mm
- Major parts are numbered
- Supplied with numbered key card
- **Eisco type AM0026**



Type	Order code	1+
Human eye model	52-3381	15.07

565656

eisco
Teach • Deliver • Learn

Five-Part Human Ear Model



This four-times life-size, hand painted human ear model has five removable parts: the petrous portion of the temporal bone section of the auditory canal, labyrinth, tympanic membrane with malleus and incus.

- 4x life-size
- Hand painted
- 5 parts
- Major parts are numbered
- Supplied with key card
- **Eisco type AM0042**

Type	Order code	1+
Human ear model	52-3511	37.87

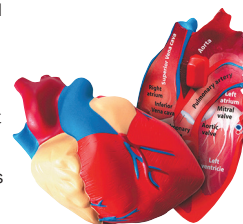
565621

Learning Resources

Cross Section Foam Human Heart Model

This human heart model separates to create a cross-section view for hands-on classroom demonstrations.

- The areas of the heart are labelled on the inside
- Activity guide provides detailed information on the heart and how it functions
- Model measures 130mm in diameter
- Suitable for **Key Stages 1, 2, 3 & 4** (ages 5 to 16)



Type	Order code	1+
Human heart model	52-6014	10.75

014795

eisco
Teach • Deliver • Learn

Human Heart Model - 7 Parts

This hand-painted heart model is mounted on a supporting base and separates into seven parts.

It is sectioned such that both ventricles and atria open to expose the heart valves. Large blood vessels near the heart and musculature of the heart are also shown. Major parts of the model are numbered and listed on the accompanying key card.

- Hand-painted
- Separates into 7 parts
- Includes key card
- **Eisco type AM0073**



Type	Order code	1+
7-piece heart model	52-3507	34.37

565635

Order online

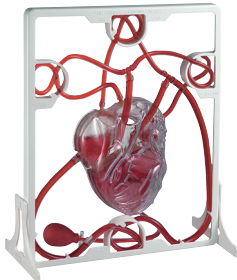
Save time, and place your order at:
www.rapidonline.com
 24 hours a day



Pumping Heart Model

This model clearly demonstrates how the heart pumps blood around the human body.

- Assembly required - full instructions supplied
- Size: 300 x 220mm



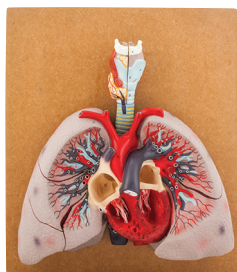
Size	Order code	1+
300 x 220mm	06-9946	15.44



Human Lungs Model with Heart and Larynx

An anatomical model showing lungs and heart in cross-section. The 2-piece larynx divides in half and can be removed for separate study.

- Mounted on base
- Major parts numbered
- Supplied with key card
- Approximate size 460 x 400 x 130mm
- Approximate weight 2.84kg
- **Eisco type AM00710**



Type	Order code	1+
Lungs, heart & larynx	52-3431	59.64



Digestive System

This hand-painted anatomical model of the human digestive system shows the nose, mouth cavity, pharynx, oesophagus, the gastrointestinal tract, liver with gall bladder, pancreas, spleen, duodenum, and opened caecum and rectum.

- Transverse colon is removable
- Model is mounted on a base
- Structures numbered, supplied with key card
- **Eisco type AM0094**



Type	Order code	1+
Digestive system	52-3389	28.17



Urinary Organs Kidney with Bladder Model

This life-size hand-painted model shows the kidneys, ureters, adrenal glands, bladder, and prostate.

One kidney is sectioned to show the internal details.

- Life-size
- Mounted on a base
- Parts are numbered
- Supplied with corresponding key card
- **Eisco type AM0112**



Type	Order code	1+
Urinary organs model	52-3513	25.49



Kidney and Adrenal Gland Model

This high quality, two-part human kidney and adrenal gland model shows fine details of the human kidney.

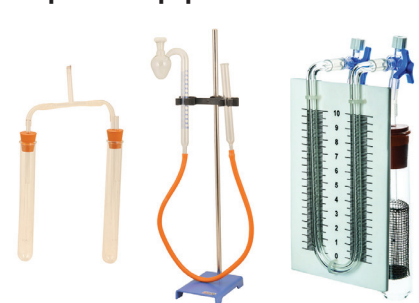
- Two hand-painted parts
- Approximate size: 120 x 120 x 280mm
- Approximate weight 400g
- Major structures are numbered
- Supplied with key card
- **Eisco type AM0110**



Type	Order code	1+
Kidney/adrenal model	52-3390	17.86



Respiration Equipment



These kits from **Eisco** can be used as part of a biology syllabus to look at the **respiratory system**.

Type	Order code	1+
Respiration apparatus	52-4210	6.15
Respirometer kit with stand and clamps	52-4211	59.79
Respirometer simple kit	52-4212	19.50



We bring STEAM to life

Dissection



20-piece Dissecting Set



A 20-piece set of commonly used dissection instruments.

- Stainless steel
- Velvet-lined rexine pouch bag

Technical specification

Quantity	Instrument	Quantity	Instrument
2	Scissors	1	Glass slide
2	Forceps	1	Cover slip
4	Needles	1	Chain and hook
1	Scalpel	1	Blow pipe
1	BP handle with blade	1	Plastic handled needle
1	Razor	1	Dropper glass
1	Watch glass	1	Brush
1	Magnifying glass		

Type	Order code	1+
20-piece set	06-7036	12.64



Stainless Steel Dissecting Needles - Pack of 5

A pack of five stainless steel dissecting needles.

- Straight style
- Length 95mm
- Supplied in packs of 5
- **Eisco type BI0166A**



Type	Order code	1+
Dissecting needles	52-3450	2.06



Dissecting Scissors

A range of stainless steel dissecting scissors available with various blade styles.

- Stainless steel construction



Style	Order code	1+
Straight	52-3357	1.38
Blunt	52-3358	1.48
Curved	52-3359	1.48



Large Aluminium Dissecting Dish

A large aluminium dissecting dish.

- Rectangular with rounded corners and flanged edges
- Dimensions: 355 x 255 x 60mm



Type	Order code	1+
Large dissecting dish	06-9082	10.11

Rapid

Plastic Tweezers

Economical, plastic tweezers, ideal for science and as an assembly aid for small components.

- Serrated tips
- Locating lugs hold tips straight when closed
- Made from recyclable ABS plastic
- Length approx. 110mm



Type	Order code	1+
Plastic tweezers	06-6064	0.202

080612

Swann-Morton®

0933 No.3 Scalpel Handle

A Swann-Morton 3G S/S stainless steel surgical scalpel handle for Swann-Morton fitment No. 3 blades.

- Suitable for fine, detailed work
- Graduated measure
- Supplied **singly**
- **Swann-Morton type 3G S/S, 0933**

This product is covered by the Offensive Weapons Act 1996. To purchase and accept delivery of this product, you must be over the age of 18.

Type	Order code	1+	10+	25+
Scalpel handle	86-1260	2.93	2.62	2.51

030493

Swann-Morton®

Scalpel Blades

Carbon-steel blades suitable for a wide range of Swann-Morton scalpel handles.

- Suitable for Swann-Morton 3, 3L, 3 Graduated, 5B, 7, 9, B3 and B3L handles
- Supplied in **packs of 5**



This product is covered by the Offensive Weapons Act 1996. To purchase and accept delivery of this product, you must be over the age of 18.

Type	Order code	1+	20+	40+
No.10 blade	86-1265	0.754	0.645	0.536
No.10A blade	86-1270	0.725	0.62	0.515
No.11 blade	86-1275	0.747	0.639	0.531

030494

Swann-Morton®

1801 Disposable Scalpel

A low-cost, disposable scalpel.

- Complete with surgical quality No. 25A universal blade
- Supplied with blade protection cover

This product is covered by the Offensive Weapons Act 1996. To purchase and accept delivery of this product, you must be over the age of 18.

Type	Order code	1+	10+	25+
Disposable scalpel	86-1285	0.707	0.635	0.563

030495

Free Delivery*

on all orders over £30 (excl. VAT)
(UK mainland only)

* See Terms & Conditions for full details - www.rapidonline.com/terms

The Environmentcicada
Love Learning**Science Habitat Centre**

This **science habitat centre** from Cicada is a fantastic addition to any classroom, presenting an ideal introduction into the world of nature and insects.

The centre creates a variety of exciting environments within the classroom, from an all herb garden, butterfly/insect house or even a mini pond. The versatile design provides open and easy access, while the bottom tub comes with two different plugs, one with ventilation holes and one for use with water.

- Great for the classroom!
- Open and easy access
- Versatile - herbs, insects or pond!
- 70 x 52.5 x 52.5cm
- Manufacturer's part **C1147**

Suitable age: 3+ years

Type	Order code	1+
Habitat Centre	52-2315	230.69

548361

INVICTA
EDUCATION
Established for over 45 years**Bug Collection Tongs**

Invicta's Bug Tongs are ideal for pupils to collect specimens on field trips. Children can capture insects, bugs and other small organisms from within their natural habitat without touching or hurting them. The scissor-action bug tongs are fun, easy and safe to use for capturing flying, swimming and crawling insects. Once captured, children can transfer the insect into a larger bug pot for further examination prior to release. Invicta Bug Tongs are 215mm in length and come complete with a product guide.

- Ideal for field trips
- Capture insects, bugs and other small organisms without touching them
- Scissor-action
- Fun, easy and safe to use for flying, swimming or crawling insects
- Specimens can be transferred into a larger bug pot for detailed examination
- Total Length 215mm
- Supplied complete with product guide
- Available **singly** and in economical **packs of 5**

Type	Order code	1+
Bug Tongs - Single	52-3099	2.14
Bug Tongs - Pack of 5	52-3100	10.39

517019

Rapid

Bug Viewers

This plastic bug pot is essential equipment for children studying nature. The transparent pot has a magnifying lid (2x and 4x) and can be used to study their findings.

- Size: 70mm
- 2x and 4x magnification
- 5mm squares on base for sizing bugs
- Supplied **singly**



Type	Order code	1+
Bug viewer	52-0851	1.92

547671

INVICTA
EDUCATION
Established for over 45 years**Bug Pots with Magnifying Lids
- Pack of 10**

Children will find the Bug Pots a useful addition to their study of nature. The individual transparent pots with magnifying lids can be used to observe their findings.

- Size 44 x 50mm dia.
- 2.5x magnification
- 5mm squares on base for sizing bugs
- Supplied in **packs of 10**

Type	Order code	1+
Bug pots pk of 10	52-1618	8.36

122182

INVICTA
EDUCATION
Established for over 45 years**Insect Pooter**

The Invicta Insect Pooter can be used by children to help them collect insects and small organisms and deposit them safely and without harm into the viewing chamber. The viewing chamber has been specially designed not to be perfectly round. Bugs will keep on walking until they find a corner or crevice to hide in and once they are still, children will find it much easier to observe them.



The design of the Pooter consists of a small, reusable jar with a green lid containing two holes; one of which has a fine mesh covering. Two lengths of tubing are supplied; one short green and the other longer clear. The short green length of tubing is inserted into the meshed hole and is sucked by the user; the end of the clear tube is placed carefully over the specimen to be collected which then gets drawn into the chamber. The mesh covering stops the specimen from being accidentally drawn into the child's mouth. The tubing can be easily washed between uses.

- Collects insects and small organisms and deposits them into the viewing chamber
- The Pooter consists of a small, reusable jar with a green lid containing two holes; one of which has a fine mesh covering

- The tubing is inserted into the meshed hole and is sucked by the user
- The end of the clear tube is placed carefully over the specimen which gets drawn into the chamber
- The mesh covering stops the specimen from being accidentally drawn into the child's mouth
- Tubing can be easily washed between uses
- Chamber 70mm high x 54mm diameter
- Available **singly** or in economical **packs of 5**

Type	Order code	1+
Pooter - Single	52-3097	1.78
Pooter - Pack of 5	52-3098	8.63

517018

Rapid

Bug Viewers

You can get up close and personal with all sorts of insects and arachnids with these colourful ventilated **bug viewers**.

- Available in a range of sizes with magnification from 2x to 6x



Type	Order code	1+
Supreme	06-9953	1.80
Standard	06-9954	1.29

563487

Rapid

Nature Exploration Kit

This kit includes a portable **bug container** with net, magnifier and tweezers - in fact everything you need to observe **minibeasts** at close quarters.

- Instruction manual included
- Container height 300mm



Height	Order code	1+
300mm	06-9956	17.16

563488

Rapid

White Pond Trays

These **pond trays** are ideal for observing minibeasts caught when pond dipping thanks to their sturdy structure and **white** colour.

- Available in two sizes



Type	Order code	1+
Large	06-9923	2.93
Small	06-9924	1.93

563464

TickiT

Bargain Buckets



These **buckets** with carrying handles from **TickiT** are ideal for mould making and for small world play. Being clear, sand and water can easily be seen to show both proportion and volume.

- Supplied in set of 8
- Diameter 175mm
- Height 160mm

Type	Order code	1+
Set of 8	06-9925	9.44

563465

Rapid

Small Pond Nets

Robust **net** with close weave mesh netting, ideal for **pond-dipping** activities.

- Handle length: 330mm
- Net size: 150 x 120mm
- Supplied in **pack of 5**



Type	Order code	1+
Pack of 5	06-9950	4.30

563465

eisco

Potometer

A potometer is an apparatus used to measure the rate of water loss, or transpiration, from a plant. The rate of transpiration is determined by measuring the drop in water level in a graduated tube over a period of time. The drop in water level is caused by the plant absorbing water to replace an equal volume of water lost by transpiration.

The apparatus is mounted on a strong backing plate and consists of a capillary tube with a millimetre scale, connected via a three-way tap to a syringe. A cut shoot is connected to third outlet.

- Ideal for laboratory and field use - only one glass component, the capillary tube
- Overall dimensions 195 x 150x 75mm
- Capillary tube 100x 1mm
- Supplied with instruction manual
- **Eisco type BI0192**

Type	Order code	1+
Potometer	52-3492	13.11

565611

eisco

Ganongs Potometer



A potometer is an apparatus used to measure the rate of water loss, or transpiration, from a plant. In the Ganong's potometer, the rate of transpiration is determined by measuring the position of an air bubble in a graduated tube over a period of time. The change in position is caused by the plant absorbing water to replace an equal volume of water lost by transpiration.

A plant shoot is sealed into a stopper which fits the end tube and the whole apparatus is filled with water, the open end of the capillary tube, which is graduated in millimetres, dipping into a beaker of water. The position of the air bubble may easily be adjusted by opening the glass stopcock to admit water from the reservoir.

The apparatus is mounted on a wooden base with the tubes held by clips.

- Height to top of reservoir 170mm
- Diameter of reservoir 20mm
- Length, overall 320mm
- Base 80 x 20mm
- Capillary bore 1 mm
- **Eisco type BI0193A**

Type	Order code	1+
Ganong's potometer	52-3493	22.87

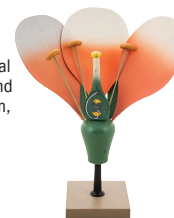
565612

eisco

Typical Flower Model

A large-sized model of a typical, idealised flower. The model is ideal for the detailed study of plants and as an introduction to reproduction, including angiosperm pollination and fertilization.

- Break resistant plastic
- Detachable parts and ovary containing a single ovule
- Mounted on stable base
- Numbered structures with key card
- Dimensions: 370 x 310 x 250mm
- **Eisco type BM0001**



Type	Order code	1+
Flower model	52-3388	25.13

565562

Tuff Trays and Stands

Available in Black, Blue and Green

£52.47

Order code 52-2403
www.rapidonline.com



eisco
 Your 1 Billion Years

Plant Cell and Animal Cell Models Set

These typical plant and animal cell models are ideal for comparison and contrasting between the two. They can be used to show the similarities and differences, and to point out the structures and organelle of each type.

- Plant cell is 152mm high and 125mm wide
- Animal cell is 152mm in diameter
- Supplied as a pair
- Eisco type BM0050



Type	Order code	1+
Plant/animal models	52-3392	39.89

Recycling, Energy & Weather

INVICTA
 EDUCATION
 Established for over 65 years

Biodegradability Kit



A new and innovative environmental science kit for teachers and pupils to conduct experiments.

- Demonstrates materials bio-degrading in compounds and liquids
- Observe the amount and rate of degrading over time, in differing materials and liquids
- Pupils should be encouraged to bring their own materials to conduct experiments
- Kit comes with 6 specially designed containers and a number of clips and cages to hold the materials in place
- Complete with a quantity of metal, card and bio-degradable plastic samples
- Designed to support the teaching of Geography and Science within the National Curriculum framework and to encourage discussion on sustainability and environmental issues
- Includes project work book
- Size: single container 145mm high (incl' lid) x 120mm across corners

Type	Order code	1+
Biodegradability kit	06-8252	52.00

**More products
 online**

www.rapidonline.com/education

INVICTA
 EDUCATION
 Established for over 65 years

Renewable Energy Kit



Enable Teachers to demonstrate the generation of electricity using Wind, Solar and Water power.

- This portable unit comes in an easy to assemble kit format and includes four interchangeable dials to demonstrate the power being generated – meter, moving cogs, flashing lights and a siren
- The unit can be used indoors and outdoors
- Applicable to both Science and Geography studies
- This teaching resource is relevant to the National Curriculum and helps pupils understand the process of renewable and sustainable energy, and the environmental issues surrounding these forms of energy generation
- Suitable for **Key Stages 2, 3 & 4** (ages 7 to 16)
- Supplied as a kit

Type	Order code	1+
Renewable energy kit	52-0376	73.34

INVICTA
 EDUCATION
 Established for over 65 years

Upright Weather Station



Inexpensive, yet complete weather station, with all components attached to a central pole.

- Wind speed
- Wind direction
- Rainfall
- Temperature
- Sun dial
- 116cm high

Type	Order code	1+
Weather station	52-0368	29.15

Brannan

Rain Gauge

200mm rainfall measure graduated in both mm and inches.



Type	Order code	1+
Rain gauge	52-0038	4.07

INVICTA
 EDUCATION
 Established for over 65 years

Rain Gauge

An inexpensive and accurate rain gauge, graduated in millimetres. The gauge can be used free-standing or with the provided detachable spike. A lid prevents spillage for when the gauge is carried.

- Complete with product guide
- Size 16 x 8cm



Type	Order code	1+
Rain gauge	52-1604	5.84

techno
 LINE®

EA 3010 Digital Hand-Held Anemometer

A hand-held anemometer with a digital display that can measure wind speeds from light air to violent storm. The meter can also measure wind chill factor and temperature.

- Simple and straightforward operation
- Measures wind speed in km/h, mph, m/s or knots
- Wind display to Beaufort on bar graph wind scale
- Temperature display in °C or °F
- LCD backlighting
- Auto power off
- Splashproof
- Neck strap
- Battery included



Technical specification

Wind speed range	0.2 to 30m/s
Accuracy	5% or least significant digit
Recommended operating temperature	-29.9°C to +59°C
Temperature checking interval	10s
Power	1x 3V lithium cell (CR2032)
Battery life	12 months approx.
Dimensions L x W x H	39 x 17 x 98mm

Type	Order code	1+
Wind Gauge	60-7418	34.10

INVICTA
 EDUCATION
 Established for over 65 years

Anemometer



This unique design gives a direct reading of wind speed, without the need to count revolutions. The low and high calibrations register ms-1 and the Beaufort scale.

- Clever indication on handle
- May be hand-held or permanently fixed
- Complete with product guide.
- Size 28 x 19cm

Type	Order code	1+
Anemometer	52-1580	15.94

Pricing

Pricing correct at time of going to press.

For up-to-date pricing visit

www.rapidonline.com