

# Science – Biology



Biogradability	220
Dissection	220
Human Biology	220

**eisco**  
Trust | Deliver | Learn

Human  
Digestive  
System  
Model of 2  
Parts

**£31.06**

Order code 52-3389

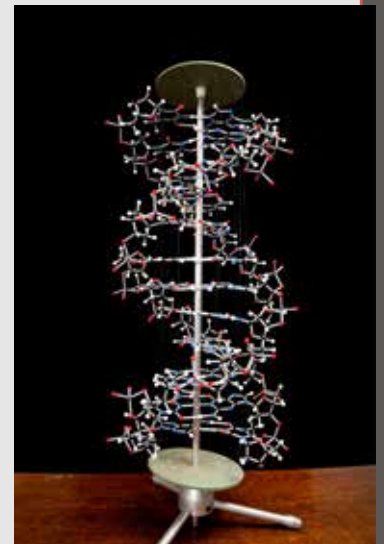


Orbit  
Proview  
DNA Model  
750 Atoms  
Assembled  
Height  
850mm

**£111.14**

Order code 52-9009

  
Cochranes of Oxford



Full range of Biology products available at:

**[www.rapidonline.com](http://www.rapidonline.com)**

## Biogradability



### Biodegradability Kit



A new and innovative environmental science kit for teachers and pupils to conduct experiments.

- Demonstrates materials bio-degrading in compounds and liquids
- Observe the amount and rate of degrading over time, in differing materials and liquids
- Pupils should be encouraged to bring their own materials to conduct experiments
- Kit comes with 6 specially designed containers and a number of clips and cages to hold the materials in place
- Complete with a quantity of metal, card and bio-degradable plastic samples
- Designed to support the teaching of Geography and Science within the National Curriculum framework and to encourage discussion on sustainability and environmental issues
- Includes project work book
- Size: single container 145mm high (incl' lid) x 120mm across corners

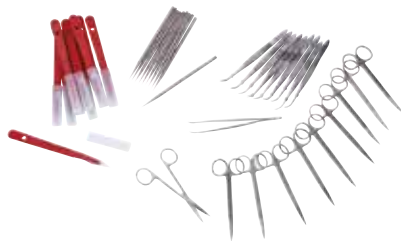
Type	Order code	1+
Biodegradability kit	<b>06-8252</b>	53.80

82354

## Dissection



### Dissection Value Bundle



This money-saving dissection value bundle provides a convenient way to buy 4 pieces of popular dissection equipment for your biology lab.

- **Bundle contains:** 10x 78-7210 S&#246;hngen 2002023 curved fine forceps - 110mm - stainless steel
- 10x 86-1285 Swann-Morton 1801 trimaway knife disposable scalpel with 25A blade
- 10x 52-3359 Eisco dissecting scissors - curved points - 110mm - stainless steel
- 2x 52-3450 Eisco dissecting needle - straight style - 95mm - stainless steel - pack of 5

Type	Order code	1+
Dissection bundle	<b>78-7206</b>	43.50

568197



### 20-piece Dissecting Set

A 20-piece set of commonly used dissection instruments.

- Stainless steel
- Velvet-lined rexine pouch bag



Type	Order code	1+
20-piece set	<b>06-7036</b>	14.57

79861



### Stainless Steel Dissecting Needles - Pack of 5

A pack of five stainless steel dissecting needles.

- Straight style
- Length 95mm
- Supplied in packs of 5
- Eisco type BI0166A



Type	Order code	1+
Dissecting needles	<b>52-3450</b>	3.10

565596



### Large Aluminium Dissecting Dish

A large aluminium dissecting dish.

- Rectangular with rounded corners and flanged edges
- Dimensions: 355 x 255 x 60mm



Type	Order code	1+
Large dissecting dish	<b>06-9082</b>	12.33

82860



### Forceps

These surgical forceps from S&#246;hngen are manufactured with stainless steel and feature flat tips. They can be used for various tasks, including both first aid and emergency medicine.

- Various tips available: flat, sickle-shaped, flat and pointed.



Tips	Length	Order code	1+
Flat	14cm	<b>64-1984</b>	3.83
Sickle-shaped	11cm	<b>64-1985</b>	3.33
Flat, round	11cm	<b>64-1986</b>	3.98
Pointed	11cm	<b>64-1987</b>	3.61

563764



### Dissecting Scissors

A range of stainless steel dissecting scissors available with various blade styles.

- Stainless steel construction



Style	Order code	1+
Straight	<b>52-3357</b>	1.53
Blunt	<b>52-3358</b>	1.64
Curved	<b>52-3359</b>	1.35

565542

## Human Biology



Cochranes of Oxford

### Orbit Proview DNA Model

See the structure of DNA clearly and understand the chemistry that controls life with the Orbit Proview DNA Model from Cochranes of Oxford.

Building the model engages and educates your students at the same time. When built, the model makes an impressive display and teaching resource, being 85cm high and 40cm wide.

The model kit includes a set of wooden plates for suspending the model. The top plate needs to be set on a suitable stand (e.g. a 90cm laboratory stand, not included) or hung from a suitable hook.

Pupils can make up the sub-assemblies: Thymine-Adenine; Cytosine-Guanine, sugar rings and phosphate groups, which are then brought together to make the finished model.

- See the structure of DNA
- Understand the chemistry that controls life
- Building the model engages and educates your students at the same time
- Impressive display and teaching resource
- 85cm high and 40cm wide
- Includes set of wooden plates for suspending the model
- Set on a suitable stand or hang from a suitable hook
- Pupils can make up the sub-assemblies which are then brought together to make the finished model
- **Self-assembly required**

Please note that the Display Stand is sold separately and is not included with the models.

Technical Specification:

Type	Order code	1+
DNA model unassembled	<b>52-9009</b>	111.14
Display stand only	<b>52-8091</b>	35.78

502601



### MiniDNA Advanced Molecular Model Kit

Self-assembly abstract model kit of DNA (DeoxyriboNucleic Acid).

This advanced miniDNA&#8482; model comprises colour-coded, abstract-shaped parts, designed to represent the nitrogenous bases, pentagonal sugar and pyramidal phosphate components needed to make a double-helix model of DNA. The 3 hydrogen bonds that connect Cytosine to Guanine and the 2 that connect Thymine to Adenine are represented by the appropriate number of pegs.

The kit makes a 22-layer (2 turns) DNA model. Each DNA kit is supplied with assembly instructions and stand.

These Dynamic models can be displayed on their stands or untwisted into a ladder form which can be 'unzipped' to demonstrate the process of replication.

Scale: 1cm = 2 Angstroms.

- Self-assembly abstract model kits of DNA
- Comprised of colour-coded, abstract-shaped parts
- Each kit is supplied complete with assembly instructions and stand
- Models can be removed from stand and 'unzipped' to demonstrate the process of replication



- Approximate diameter 11cm
- Approximate height 44cm

For technical specialisation visit [www.rapidonline.com](http://www.rapidonline.com)

Type	Order code	1+
22-layer / 2 turns	52-0471	34.23

525537



## Enlarged Dental Care Models

These enlarged teeth models are ideal for demonstrating dental care.

- 52-3504 is approximately 330 x 150 x 150mm
- 52-3503 is approximately 530 x 170 x 170mm
- Supplied with large sized brush
- **Eisco AM0050 series**



For technical specialisation visit [www.rapidonline.com](http://www.rapidonline.com)

Size	Order code	1+
330 x 150 x 50mm	52-3504	9.86
530 x 170 x 70mm	52-3503	20.57

565615



## Human Eye Model 3D

This high quality seven-piece, hand-painted model shows fine details of the human eye.

The upper half of the sclera with cornea and eye muscle attachments, both halves of choroids with iris and retina, lens, and vitreous humour are all removable.

- 3x life size
- Approximate size 120 x 120 x 170mm
- Major parts are numbered
- Supplied with numbered key card
- **Eisco type AM0026**



Type	Order code	1+
Human eye model	52-3381	16.63

565556



## Functional Eye Model

This innovative working **model of the eye** offers high visibility and does not involve the injection of liquid. This model is composed of a flexible lens with an adjustable focus, which constitutes the crystalline lens. The adjustment of the crystalline lens is made by mechanical stress on the flexible lens, which is similar to the action of the ciliary muscles. The screen represents the retina which can slide along the optical axis to simulate common vision problems such as myopia and hyperopia.

- Lens holder in front of the eye allows corrective lens to be put in place

**Set includes:** eye model and kit of corrective lenses.

Type	Order code	1+
Non-liquid	52-2690	191.66

550614



## Human Skeletons

A range of human skeleton models permitting detailed observation of the structure of the human body.



Size	Order code	1+
450mm	52-3516	26.18
510mm	52-3517	71.39

565625



## Five-Part Human Ear Model



This four-times life-size, hand painted human ear model has five removable parts: the petrous portion of the temporal bone section of the auditory canal, labyrinth, tympanic membrane with malleus and incus.

- 4x life-size
- Hand painted
- 5 parts
- Major parts are numbered
- Supplied with key card
- **Eisco type AM0042**

Type	Order code	1+
Human ear model	52-3511	41.76

565621



## Digestive System

This hand-painted anatomical model of the human digestive system shows the nose, mouth cavity, pharynx, oesophagus, the gastro-intestinal tract, liver with gall bladder, pancreas, spleen, duodenum, and opened caecum and rectum.

- Transverse colon is removable
- Model is mounted on a base
- Structures numbered, supplied with key card
- **Eisco type AM0094**



Type	Order code	1+
Digestive system	52-3389	31.06

565563



## Human Pregnancy Pelvis Model With Removeable Fetus

A hand-painted model of the pelvic region of a pregnant human female. The model shows the 9th month of pregnancy and is an excellent model for the study of the normal position of a child before birth.



- Fetus is removable
- Key card for numbered structures
- Approximate size: 420 x 230 x 420mm
- Approximate weight 3.7kg
- **Eisco type AM0120**

Type	Order code	1+
Pregnancy model	52-3508	30.94

565618



## 300x Life-Size Human Skin Model

This 300 times life-size model represents a comprehensive cross-section through human skin. It shows details of the three layers, sebaceous and sweat glands, hair follicles, erector muscles, arteries, nerves, veins and more.

- 300 times life-size
- Mounted on a base
- Many structures are numbered
- Supplied with numbered key card
- Hand painted
- **Eisco type AM0318**



Type	Order code	1+
Human skin model	52-3509	23.69

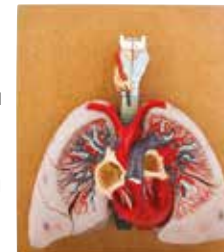
565619



## Human Lungs Model with Heart and Larynx

An anatomical model showing lungs and heart in cross-section. The 2-piece larynx divides in half and can be removed for separate study.

- Mounted on base
- Major parts numbered
- Supplied with key card
- Approximate size 460 x 400 x 130mm
- Approximate weight 2.84kg
- **Eisco type AM00710**



Type	Order code	1+
Lungs, heart & larynx	52-3431	65.77

565581

## Order online

Save time, and place your order at:  
[www.rapidonline.com](http://www.rapidonline.com)  
 24 hours a day



## Rapid

### Stethoscope

A real working, traditional style stethoscope of conventional design allowing students to learn about the function of the lungs, heart, monitor heart rates and measure the effects of exercise.

- Working stethoscope
- Conventional design
- Listen to lung and heart functions
- Monitor heart rates
- Measure the effects of exercise



Type	Order code	1+
Stethoscope	52-0539	4.53

516981

## eisco

### Respiration Equipment

These kits from Eisco can be used as part of a biology syllabus to look at the respiratory system.



Type	Order code	1+
Respiration Apparatus	52-4210	6.79
Respirometer Kit with Stand and Clamps	52-4211	22.19
Respirometer Simple Kit	52-4212	21.51

568099

## eisco

### Respirometer Simple Kit



Only

# £21.51

Order code 52-4212

[www.rapidonline.com](http://www.rapidonline.com)


## Rapid

### Dissection Value Bundle

Order code 78-7206

# £43.50

- 10x Söhngen 2002023 curved fine forceps - 110mm - stainless steel
- 10x Swann-Morton 1801 trimaway knife disposable scalpel with 25A blade
- 10x Eisco dissecting scissors - curved points - 110mm - stainless steel
- 2x Eisco dissecting needle - straight style - 95mm - stainless steel - pack of 5

## Biology Organs Model Bundle

### Lungs, Heart & Kidney

- Lungs model, 460 x 400 x 130mm
- Heart model: Separates into 7 parts
- Kidney and adrenal gland model: 120 x 120 x 280mm

Order code 78-7213

# £95.59



Image: Freepik.com