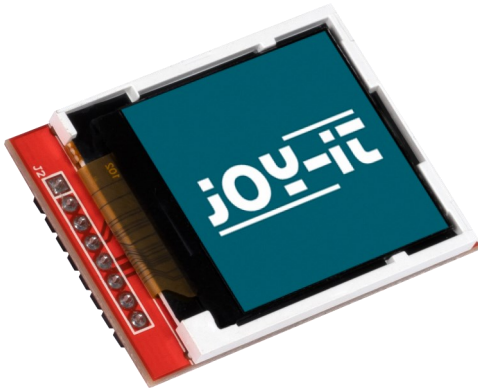


1.44-Inch HD IPS TFT LCD

SBC-LCD02



This IPS TFT display is controlled via SPI. Therefore, it is suitable for the use as an output device for microcontrollers (e.g. NodeMCU, ESP8266) and single-board computers (e.g. Raspberry Pi). By using a high-resolution IPS panel with a pixel density of 125 ppi, content can be displayed in high-resolution on the compact display.

MAIN FEATURES

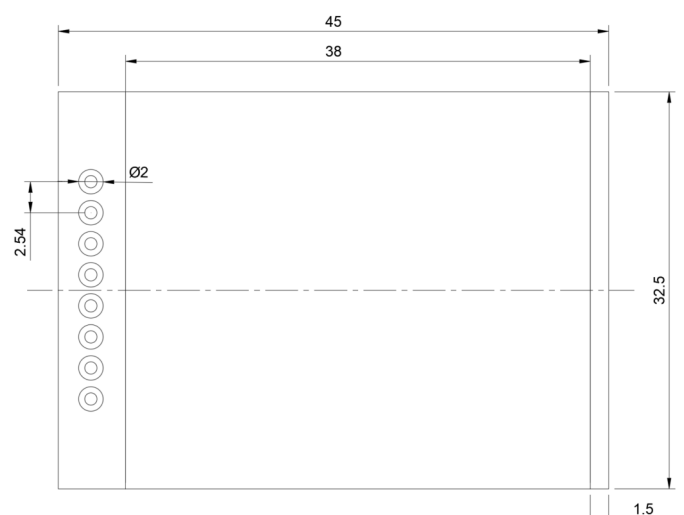
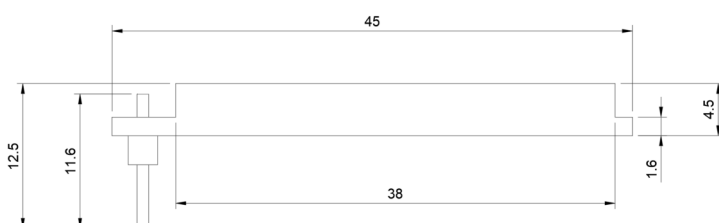
Type	Full color IPS TFT LCD with white LED backlight
Resolution	128 x 128 Pixel
Colors	18-bit color depth (262.144 colors)
Control chip	ILI9163 Drive IC
Digital Interface	SPI
Special feature	Via pin controllable backlight
Dimensions	30 x 43 x 10 mm
Items delivered	SBC-LCD02 with pins

FURTHER SPECIFICATIONS

Voltage supply	3.3V
Logic level	3.3 V
Pixel density	125 ppi
Operation temperature	-40 °C - 85 °C

FURTHER DETAILS

Article No.	SBC-LCD02
EAN:	4250236821986
Customs Tariff No.	8473302000



Published: 04.08.2021

www.joy-it.net

SIMAC Electronics GmbH,
Pascalstr. 8, 47506 Neukirchen-Vluyn