

Artikel-Nr. 072500/O

Bez.: **Platinen-Steckverbinder, hochw. Ausf., gerade Ausf., Kabel/Länge AWG 24-25 cm, Oberteil**  
**Buchsenleiste mit Kabel, 2-polig, mit Verriegelung**

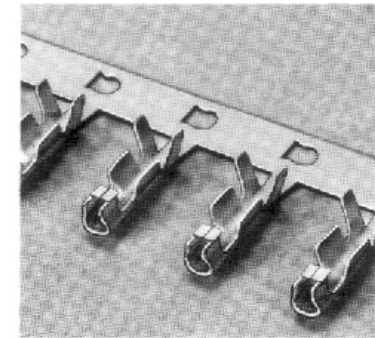
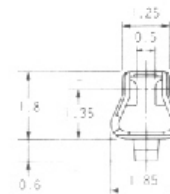
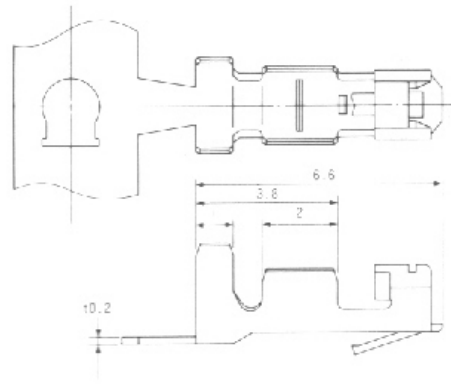
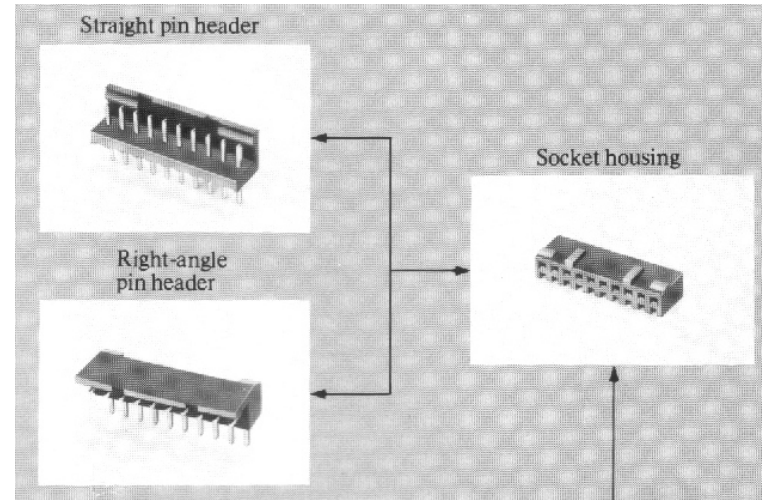
- Very low profile — total mated height: 10mm
- Newly designed, highly reliable socket contact
- 14 sizes, from 2 to 15 contact layouts
- Straight/Right angle pin headers & sockets

• **MATERIALS & FINISHES**

Insulator: 66 Nylon,  
UL94V-0 light brown  
Pin contact: Brass,  
Tin over nickel plated

• **STANDARD DATA**

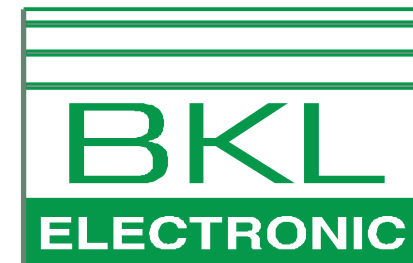
Current rating: 3 Amp.  
Dielectric withstanding voltage: 1500 VAC r.m.s.  
Insulation resistance: 100 M $\Omega$  min.  
Contact resistance: 20 m $\Omega$  max.  
Contact retention: 1 kg min.  
Total mating force:  $(350 \times n + 1500)$  g max.  
Total unmating force:  $(200 \times n + 1500)$  g min.  
Operating temperature:  $-40^{\circ}\text{C}$  thru  $+85^{\circ}\text{C}$   
Applicable PCB: 1.6 thru 2.6 mm thick  
Applicable wire size: AWG #22 thru #28  
(n=Number of contacts)



**www.bkl-electronic.de**

Technische Änderungen vorbehalten. Ausführungen können variieren. Sollten Sie ein Muster benötigen kontaktieren Sie uns bitte.

BKL-ELECTRONIC Kreimendahl GmbH • Märkenstück 14 • 58509 Lüdenscheid  
Tel: +49 (0)2351-3621-0 • Fax: +49 (0)2351-3621-29 • info@bkl-electronic.de

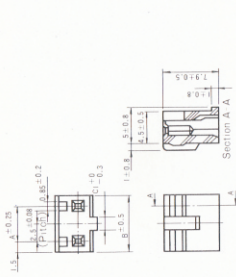


Artikel-Nr. 072500/O

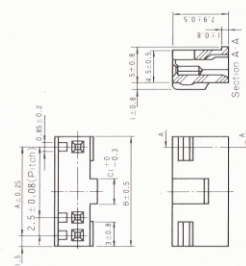
Bez.: Platinen-Steckverbinder, hochw. Ausf., gerade Ausf., Kabel/Länge AWG 24-25 cm, Oberteil  
Buchsenleiste mit Kabel, 2-polig, mit Verriegelung

# SOCKET HOUSING

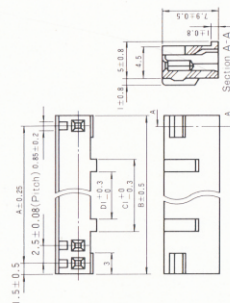
• 2, 3 contact



• 4~6 contact

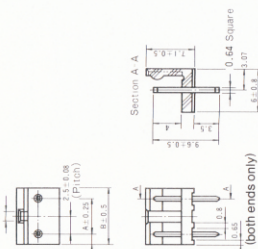


• 7~15 contact

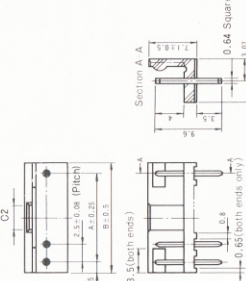


# STRAIGHT PIN HEADER

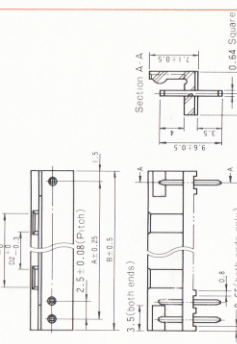
• 2, 3 contact



• 4~6 contact

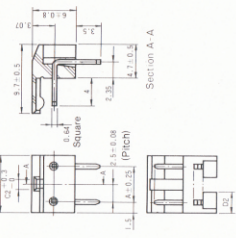


• 7~15 contact

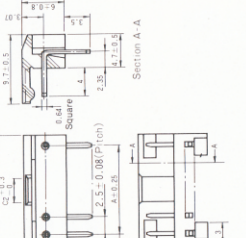


# ANGLE PIN HEADER

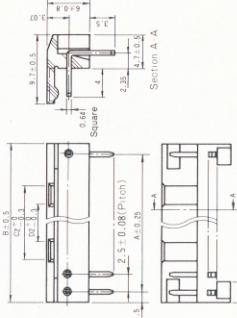
• 2, 3 contact



• 4~6 contact



• 7~15 contact



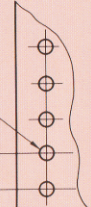
(Conguration of 13, 14 & 15-contact layouts are slightly different)

No. of contacts	A ± 0.25	B ± 0.5	C1 ± 0.3	C2 ± 0.3	D1 ± 0.3	D2 ± 0.3	Terminal No. on housing
2	2.5	5.5	1.4	1.5	—	1.7	1
3	5	8	1.9	2	—	3	1
4	7.5	10.5	2.4	2.5	—	—	1
5	10	13	2.9	3	—	—	1, 5
6	12.5	15.5	3.4	3.5	—	—	1, 5, 6
7	15	18	3.9	4	2.5	2.4	1, 5, 6
8	17.5	20.5	4.4	4.5	5	4.9	1, 5, 6, 8
9	20	23	4.9	5	7.5	7.4	1, 5, 6, 8
10	22.5	25.5	5.4	5.5	10	9.9	1, 5, 6, 8, 10
11	25	28	5.9	6	12.5	12.4	1, 5, 6, 8, 10
12	27.5	30.5	6.4	6.5	15	14.9	1, 5, 6, 8, 10, 12
13	30	33	6.9	7	17.5	17.4	1, 5, 6, 8, 10, 12
14	32.5	35.5	7.4	7.5	20	19.9	1, 5, 6, 8, 10, 12
15	35	38	7.9	8	22.5	22.4	1, 5, 6, 8, 10, 12, 15

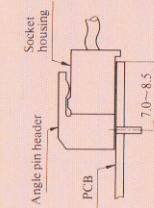
\* Terminal No. on housing (viewed from contact insertion side)



\* PCB Mounting hole (PCB thickness: 1.6~2.6mm)  
2.5 ± 0.1 (pitch)  
1.1 ± 0.1 dia.



INSTALLATION  
Right-angle pin header must be installed on an edge of the board as shown below:



www.bkl-electronic.de

Technische Änderungen vorbehalten. Ausführungen können variieren. Sollten Sie ein Muster benötigen kontaktieren Sie uns bitte.

BKL-ELECTRONIC Kreimendahl GmbH • Märkenstück 14 • 58509 Lüdenscheid  
Tel: +49 (0)2351-3621-0 • Fax: +49 (0)2351-3621-29 • info@bkl-electronic.de

