

Features

- Gallium Nitride (GaN FET) Based Design
- High Power Density (+ 202 %)*
- 200 kHz Switching Frequency
- Efficiency up to 94 %
- No Load Power Consumption < 0.15 W
- Regulated Output with Low Ripple Noise
- 1 Year Warranty



Marks / Approvals



Product similar to photo, variations possible. Photo shows variant type P with C14 AC inlet.
Refer to technical drawing for detailed specifications

Specifications

	MODEL	Voltage	Min. Load	Max. Load	Max. Power
	ATS 120TS-P120	12 V	0.00 A	9.00 A	108 W
	ATS 120TS-P190	19 V	0.00 A	6.30 A	120 W
	ATS 120TS-P200	20 V	0.00 A	6.00 A	120 W
	ATS 120TS-P240	24 V	0.00 A	5.00 A	120 W
	ATS 120TS-P480	48 V	0.00 A	2.50 A	120 W
	ATS 120TS-P560	56 V	0.00 A	2.14 A	120 W
	P: IEC 60320 C14 or C6 Inlet				
INPUT	Voltage	AC 100 V – 240 V			
	Frequency	50 Hz - 60 Hz			
	Current	1.6 A max.			
	Protection	Internal Primary Current Fuse, Inrush Limiting			
OUTPUT	Load Regulation	± 5 % (typical)			
	Ripple & Noise	1 % – 2 % V p-p max. for output voltage at full load			
	Transient Response	0.5 ms for 50 % load change typical			
	Leakage Current	3.5 mA			
	Protection	Short Circuit Protection • Over Voltage Protection Over Current Protection • Over Temperature Protection			
OTHERS	Cooling	Convection			
	Efficiency	DoE Level VI • Energy Star • ErP Stage 2 • NRCAN & GEMS Level VI Certified			
	Holdup Time	10 ms at full load			
	Dielectric Withstand	AC 3000 V Primary – Secondary			
	MTBF	300,000 calculated hours at 25 °C by Telcordia SR-332			
ENVIRONMENT	Temperature	Operating: 0 °C – 40 °C / Storage: -20 °C – 80 °C			
	Humidity	Operating: 20 % RH – 80 % RH / Storage: 10 % RH – 90 % RH			
CONNECTION	Input	IEC 60320 C14 or C6 input connector (Protection Class I)			
	Output	Standard DC Cable Type: Black UL2095 16 AWG * 4C; Other configurations available upon request			
EMI Conduction & Radiation	Compliance to EN 55032, EN 55024				
Harmonic Current	Compliance to EN 61000-3-2, -3				
EMS Immunity	Compliance to IEC 61000-1-2, -3, -4, -5, -6, -8, -11				
Safety	IEC / EN / UL 62368-1 • IEC 60950-1 • CE • PSE • BSMI				
Case Dimensions	C6/C14: 132 mm x 51 mm x 32 mm				
Weight	350 g (typ.)				

* Power Density 202 % higher than traditional adapter (9.1 W/in³ compared to 4.5 W/in³)

Specifications subject to change without notice

Cable type : Black UL11352 16AWG

(Wire + Plug)

Plug : $\phi 5.5 * \phi 2.1 * 11 \text{ mm}$
(cannelure)

Cable length : 1500mm

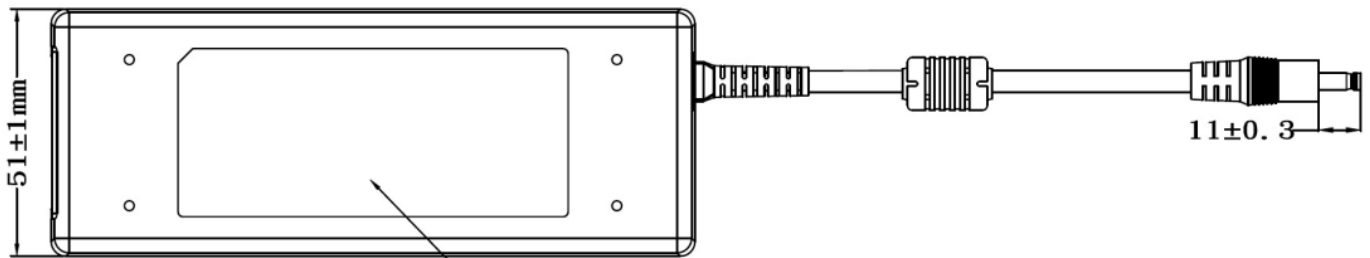
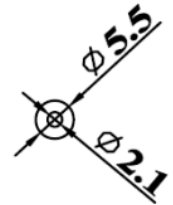
Case dimension : 132mm(L) * 51mm(W) * 32mm(H) $\pm 1 \text{ mm}$

Material flammability : UL 94V-0

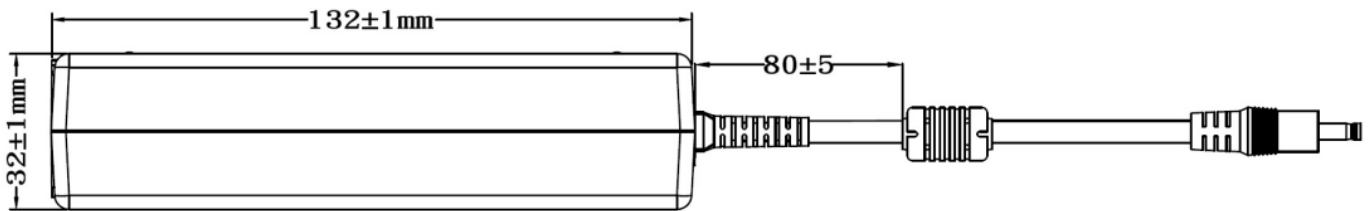
External appearance : As drawing below (Scale \rightarrow mm)



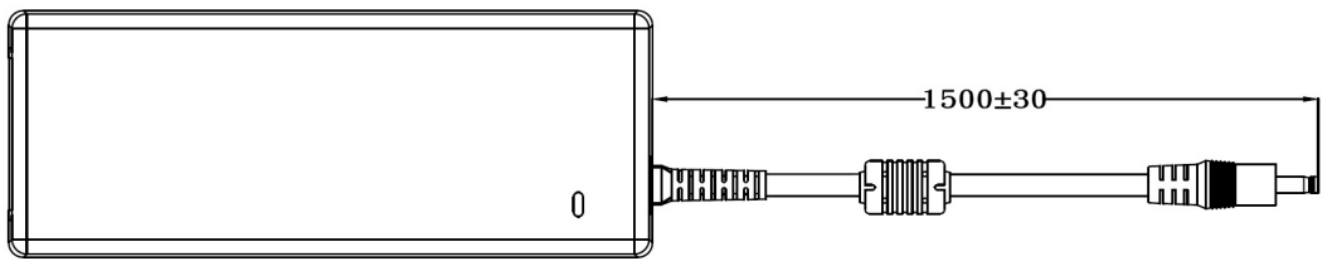
Output Cable Plug Pin Assignment



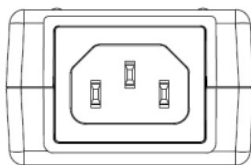
TOP-VIEW



SIDE-VIEW



BOTTOM-VIEW



FRONT-VIEW