

Board-to-Wire Connectors Pitch 2.54 mm Series CG

Housings CG series double row



SPECIFICATION:

Operating Voltage (Max.):	250 V
Operating Current (Nom.):	3 A
Operating Temperature:	-25°C to 85°C
Insulation Resistance (Min.):	1000 MΩ
Contact Resistance (Max.):	20 mΩ
Dielectric Strength:	800 Vac

MATERIAL:

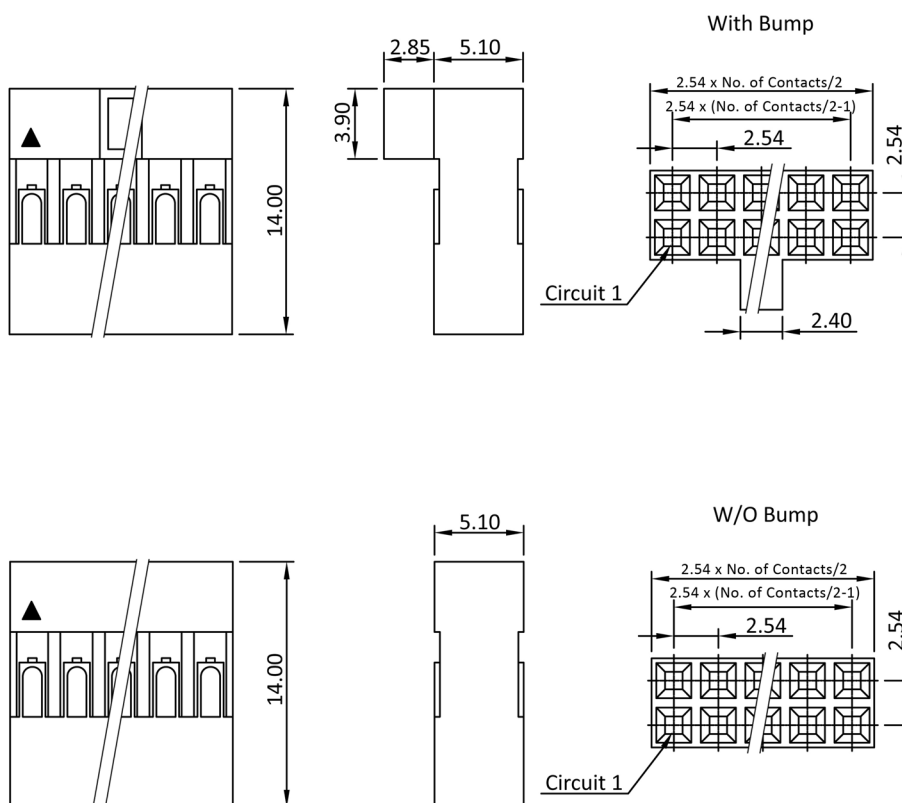
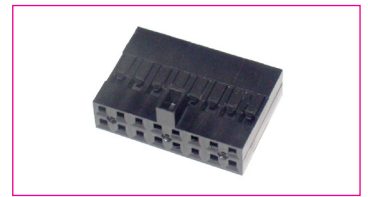
Material (Housing):	Noryl
Flammability Class:	UL 94 V-1

HANDLING:

Packaging:	bulk
------------	------

TOLERANCE:

.X:	± 0.35
.XX:	± 0.25



Order Information

Identifier:	No. of Contacts:	Version:
CGD	#	#
Housing series CG pitch 2.54 mm double row	4: 2 x 2	empty: with bump *
	6: 2 x 3	A: without bump
	8: 2 x 4	
	:	
	40: 2 x 20	

* = Standard