

DC Sockets, angled

PCB mounting



RoHS
COMPLIANT

SPECIFICATION:

Current rating: 2 A
 Voltage rating: 20 V DC
 Insulation resistance: 100 MΩ min. at 500 V DC
 Contact resistance: 50 mΩ max.
 Dielectric voltage: 500 V AC
 Insertion / Extraction Force: 0.3~3.0 kg
 Operating life: 5000 Mating cycles

MATERIAL:

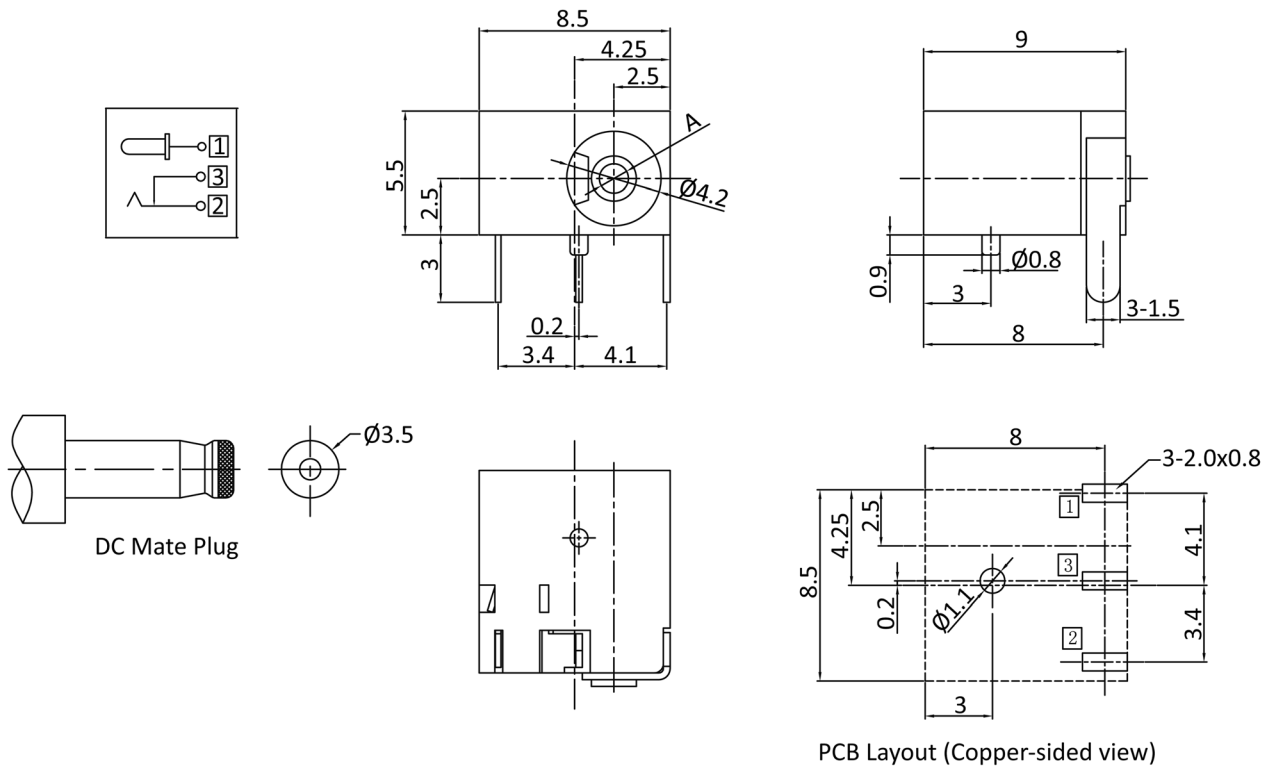
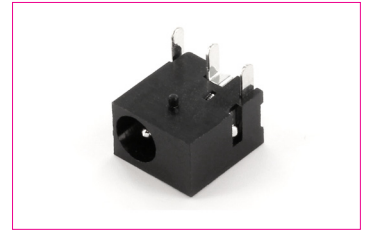
Housing: PA66/PBT
 Barrel: Brass
 Terminal: Copper alloy

FINISH:

Barrel: Nickel plated
 Terminal: Silver plated

TOLERANCE:

.X ±0.35
 .XX ±0.25



Order-Information

Identifier:	Diameter pin (A):
DC8J	#
DC Socket angled PCB mount	10: Diameter 1.0 mm
	13: Diameter: 1.3 mm