

SPECIFICATION:

Current rating: 5 A DC
 Voltage rating: 12 V DC
 Insulation resistance: 1000 MΩ min.
 Contact resistance: 50 mΩ max.
 Dielectric voltage: 500 V AC
 Insertion Force: 1.2 kg max.
 Extraction Force: 0.3 kg min.
 Operating life: 10000 Mating cycles

**RoHS
COMPLIANT**

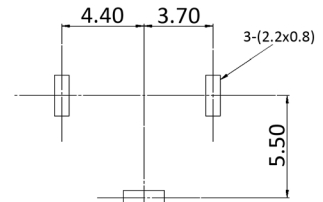
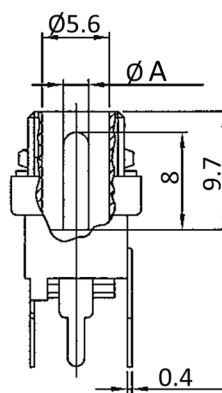
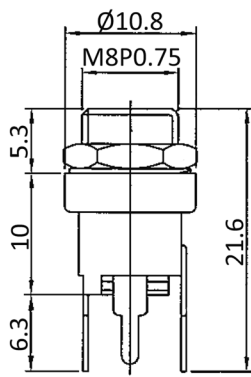


MATERIAL:

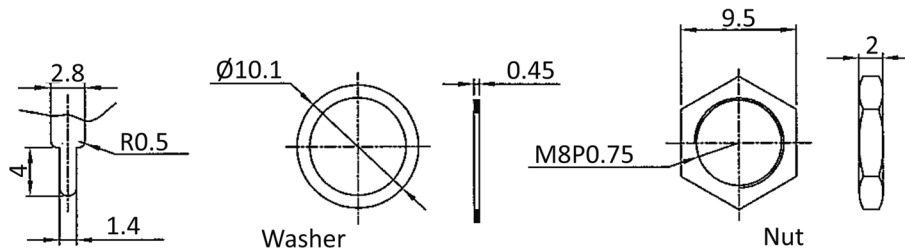
Housing: Nylon 66
 Barrel: Brass
 Terminal: Phosphorbronze

FINISH:

Barrel: Silver plated
 Terminal: Silver plated



PCB Layout



Order-Information

Identifier:

DCE5

Diameter Pin (A):

#

DC Socket vertical PCB mount

AP: Diameter 2.1 mm

BP: Diameter 2.5 mm