

Tous droits strictement réservés. Toute réimpression ou utilisation non autorisée sans la permission écrite du propriétaire. Property of FCI. Copyright FCI.

REFERENCE SPECIFICATIONS

- DIN 41652
- MIL-DTL-24308

PHYSICAL CHARACTERISTICS

- INSULATOR MATERIAL :
- PBT COLOR BLACK-RAL 7001/STANDARD MATERIAL
- CONTACT MATERIAL: - PHOSPHOR BRONZE FOR STRAIGHT CONTACT AND RA SOCKET
 - BRASS FOR RA PIN
- GROUNDING DEVICE MATERIAL : - BRASS FOR RIGHT ANGLE CONTACT

ELECTRICAL CHARACTERISTICS

- MAXIMUM RATING CURRENT: 5A AT 70°C
- NOMINAL CURRENT: 5A (STANDARD CONDITIONS)
- CONTACT RESISTANCE : straight terminations: <10mW
- Right angled termination: <25mΩ
 - : <35mΩ for 50 way
- VOLTAGE PROOF : >1000 V.r.m.s.
- RATED VOLTAGE : 300 V.r.m.s.
- insulation resistance: >5000mΩ
- creepage and clearance distance: >1mm
- average wiping length: 2mm

MECHANICAL CHARACTERISTICS

- RETENTION AGAINST TORQUE: - Threaded insert: 0.7 N.m minimum
 - Female screw lock: 0.5 N.m minimum
- INSERTION AND WITH DRAWAL FORCE: <n x 3.40 N (n number of cts)
- GAUGE RETENTION FORCE : >0.20 N (gauge PM)
- THICKNESS GAUGE = $\varnothing 0.99 \pm 0.005$ / SURFACE ROUGHNESS:
 - Ra=0.10μ mini- 0.25μ maxi
- CONTACT RETENTION IN INSULATOR : mini 16N for straight contact
 - mini 20N for right angled contact
- VIBRATIONS: 10-2000Hz / 1.5 mm - 20g / 3 x 2 HRS
- INTERRUPTION <1μs (NOT APPLICABLE FOR PL3)
- SHOCK: ACC. HALF SINE 50g- 11m.s-6x3 SHOCKS
- INTERRUPTION <1μs
- HARPOON INSERTION FORCE: <60N

PERFORMANCE LEVELS

MECHANICAL ENDURANCE ONLY		
P/N: DXXXXXX	PERFORMANCE LEVELS	
4 200 OPERATIONS	PL3	
6 400 OPERATIONS	PL1	

MECHANICAL ENDURANCE AND INDUSTRIAL ATMOSPHERE TEST(1)		
P/N: DXXXXXX	PERFORMANCE LEVELS	
4 salt spray: 24 hours	PL3	
6 250 op + test (1 or 2)-10 days + 250 op	PL1	

1) INDUSTRIAL ATMOSPHERE TEST: 3 GASES available for contacts and grounding device

IN ACCORDANCE WITH IEC-68-2-60-TTD - TEST ke - MTH C OR IEC 512-6 TEST IIg

MIXED GASES: H2S=10 PPB±5.10-9vol/vol +N2O=200±50.10-9 vol/vol + CL2=10±5.10-9vol/vol

TEMPERATURE = 30±1°C / RELATIVE HUMIDITY= 70±3°C

(2) INDUSTRIAL ATMOSPHERE TEST: 4 GASES available for contacts active area only

BELCORE TEST : MIXED GASES: H2S=10 PPB±5 vol/vol +N2O=200ppb±50 vol/vol + CL2

=10ppb±3vol/vol + S2O=100ppb±30vol/vol

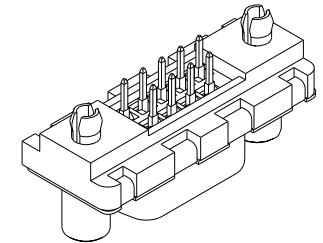
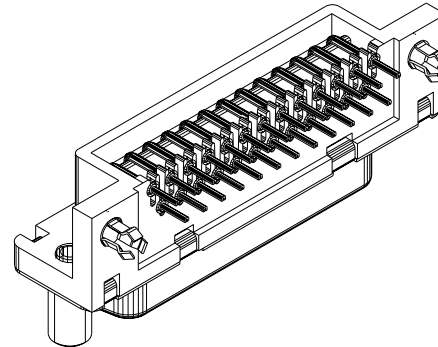
TEMPERATURE = 30±1°C / RELATIVE HUMIDITY= 70±2°C

ENVIRONMENTAL CHARACTERISTICS

- CLIMATIC CATEGORY: 55/125/56
- TEMPERATURE RANGE -55°C TO +125°C
- DAMP HEAT STEADY STATE 56 DAYS

RIGHT ANGLED

STRAIGHT



PLATING TIN LEAD VERSION

- CONTACT:
 - GOLD OVER NICKEL ON MATING SURFACES
 - TIN LEAD OVER NICKEL ON TERMINATION PARTS
- SHELL AND ACCESSORIES TIN LEAD OVER COPPER

PLATING TIN VERSION

NOTE RoHS INFORMATIONS

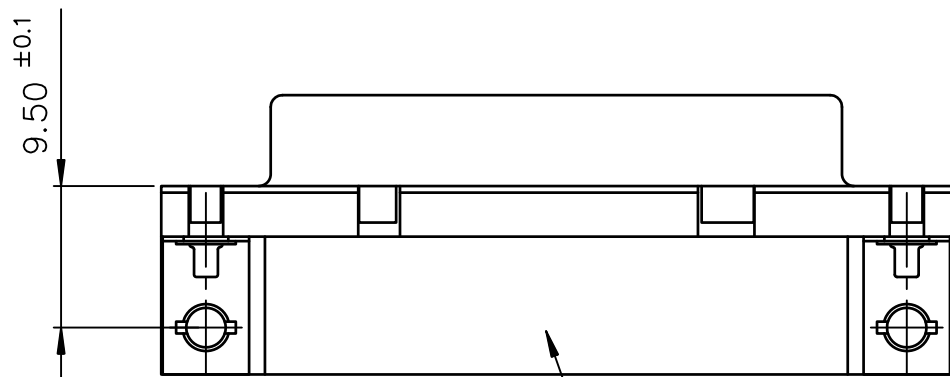
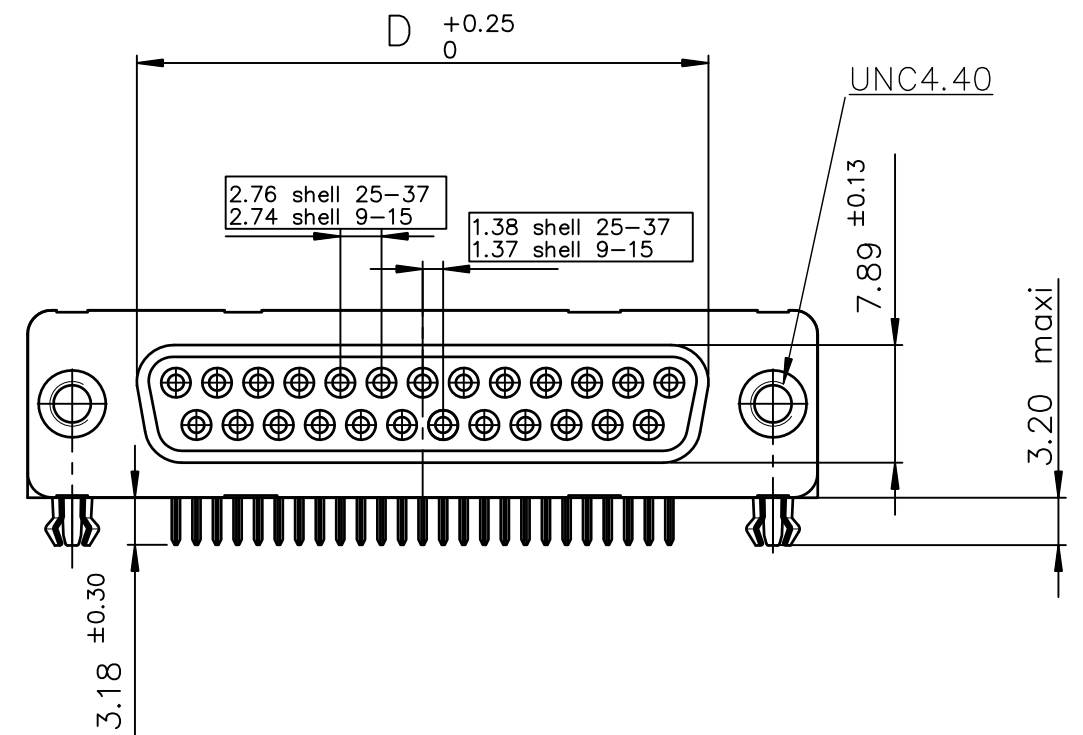
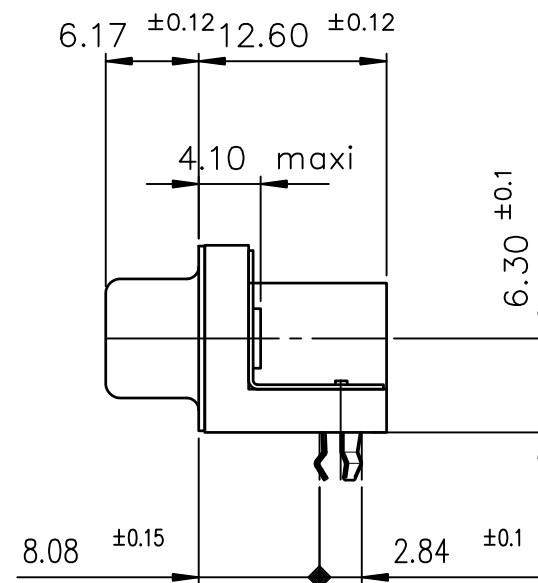
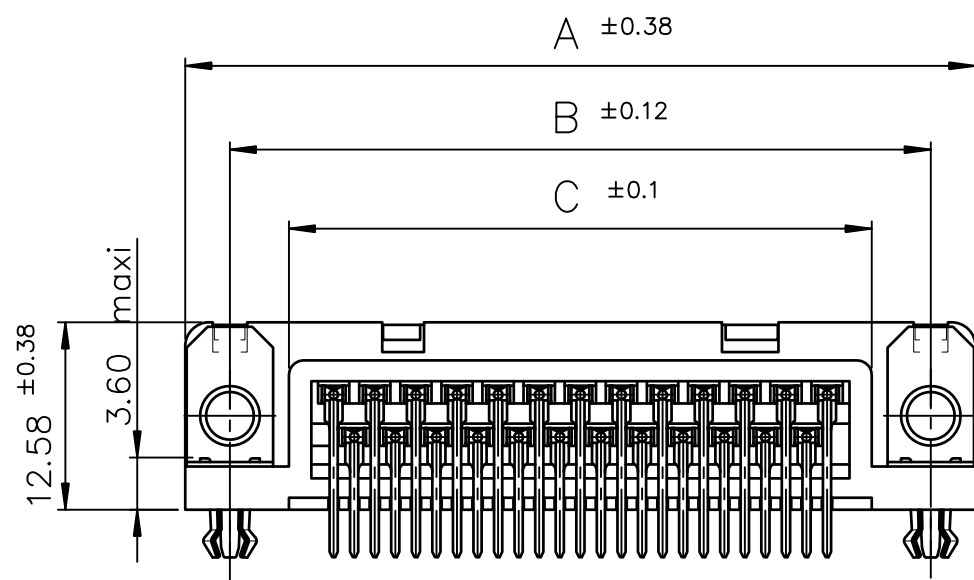
- The "LF" products meet European union Directives and other country regulations as described in GS-22-008
- The housing will withstand exposure to 260°C peak temperature for 3.5 seconds in a wave solder application with a 1.6 mm minimum thickcircuit board. See application notes/procedures if they are available.
- Termination plating spec: 1.27μm Nickel mini, 2.5 to 7.5 μm Sn (pure matte)
- Shell plating: 2 to 4 μm Cu + 3 to 10 μm Sn (pure bright)
- Accessories: Sn pure bright
- Packaging spec: see GS-14-920

FCI www.fciconnect.com		surface <input checked="" type="checkbox"/>	tolerance	projection	
Dr JOUBERT	30/11/00	Product family		size A3	Scale 1:1
Eng		Spec ref			
Chr		Material		SEE NOTES	ECN LS05-0039
Appr LEGARE	30/11/00				
DELTA D SOLDER CTS CONNECTORS		dwg no C01-8646-0000		Rev. C	
GENERAL CHARACTERISTICS					
catalog no		CUSTOMER COPY		sheet 1 of 1	



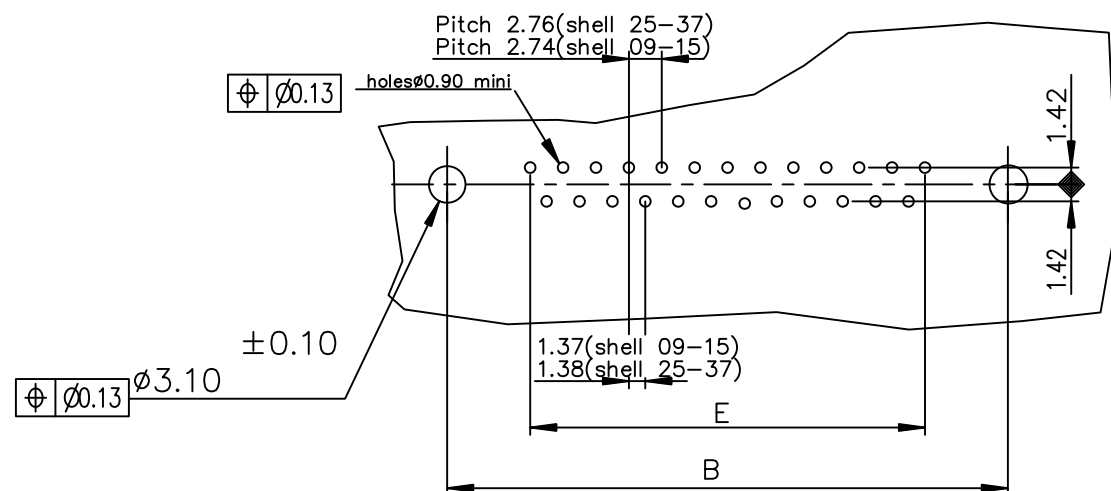
FCIconnect.com

Copyright FCI



Part Number & Date Code Printing

PC card drilling dimensions(after plating)
(thickness 1.60±0.20mm)

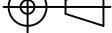




PART NUMBER

SHELL	A±0.38	B±0.12	C±0.10	D±0.25	E±0.07	200 Mating cycles	500 Mating cycles
09	30.81	24.99	16.96	16.21	10.96	D09S33E4GX00**	D09S33E6GX00**
15	39.14	33.32	25.18	24.54	19.18	D15S33E4GX00**	D15S33E6GX00**
25	53.03	47.04	39.12	38.25	33.12	D25S33E4GX00**	D25S33E6GX00**
37	69.32	63.50	55.68	54.71	49.68	D37S33E4GX00**	D37S33E6GX00**

LF FOR LEAD FREE

GENERAL CHARACTERISTICS : SEE DRAWING C01-8646-0000

mat'l. code —				surface ISO 1302 ✓			tolerance ISO 406 ISO 1101			projection 			product family D—SUB												
ltr	ecn no		dr	date		tolerances unless otherwise specified										title SOCKET CONNECT. DELTA-D R/A WITH NUT, HARPOON & METAL PLATE									
D	ELX-I-19243		AB	2014-10-29		angles		linear		.0±.0.1															
										.00±.0.1															
						0°±2°				.000±.0.1				scale 2:1											
					dr	JOHN SLEEBA		1994-10-14				dwg no						sheet 1 of 1		size					
					engr	ALIAS BABU		2014-10-29				C01—8646—0823						A3							
					chr	MITHUN PAUL		2014-10-29																	
					appd	BIJU K PAUL		2014-10-29																	
sheet index		revision		D																					
		sheet		1																					