

Tous droits strictement réservés. Reproduction ou communication a des tiers interdite sous quelque forme que ce soit sans autorisation écrite du propriétaire. Propriété de c FCI. Droits de reproduction FCI.

FCI

C

ALL rights strictly reserved. Reproduction or issue to third parties in any form whatever is not permitted without written authority from the proprietor. Property of FCI. Copyright FCI.

A

U

D

REFERENCE SPECIFICATIONS

-NFC 93425 (in compliance with HE 507)

PHYSICAL CHARACTERISTICS

- INSULATOR MATERIAL: THERMOPLASTIC / STANDARD MATERIAL
- CONTACT MATERIAL: PHOSPHOR BRONZE (FEMALE SIGNAL CONTACT)
BRASS (PIN SIGNAL CONTACT)
BRASS (POWERS CONTACT)
- ACCESSORIES: BRASS TIN LEAD OVER NICKEL
- SHELLS: STEEL BRIGHT TIN LEAD

ELECTRICAL CHARACTERISTICS

- NOMINAL CURRENT: 7.5A (STANDARD CONDITIONS)
- CONTACT RESISTANCE: ≤7.3mΩ
- CONTACT/CONTACT : ≥1000 V
- CONTACT/GROUND : ≥1200 V
- INSULATION RESISTANCE: ≥5000 MΩ

ENVIRONMENTAL CHARACTERISTICS

- CLIMATIC CATEGORY: 55/125/21
TEMPERATURE RANGE -55°C TO +125°C
DAMP HEAT STEADY STATE 21 DAYS
SALT SPRAY 24 HOURS

MECHANICAL CHARACTERISTICS

- RETENTION AGAINST TORQUE: - Threaded insert: 0.7 N.m minimum
- Female screw lock: 0.5 N.m minimum

CONTACT PLATING FOR TIN LEAD VERSION

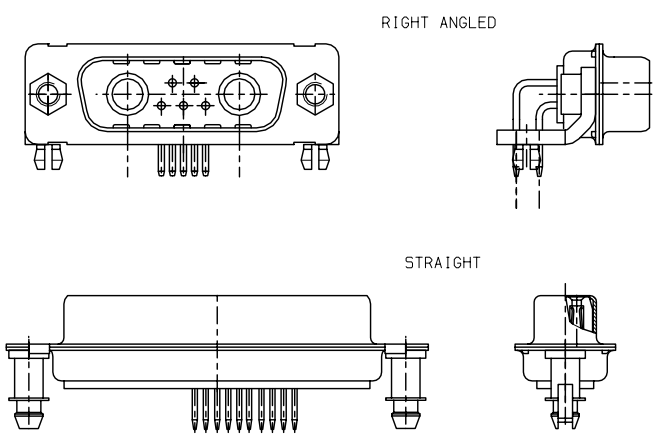
- SIGNAL CONTACT:
 - GOLD OVER NICKEL ON MATING AREA
 - TIN LEAD OVER NICKEL ON TERMINATION PARTS

CONTACT PLATING FOR LEAD FREE VERSION

NOTE RoHS INFORMATION

- The "LF" products meet european union Directives and other country regulations as described in 65-22-008.
- The housing will withstand exposure to 260°C peak temperature for 3.5 seconds in a wave solder application with a 1.6mm minimum thick circuit board. See application notes/procedures if they are available.
- Termination plating spec:
 - Signal contacts: Ni + Gold
 - Shell plating :2 to 4μCu + 3 to 10μmm Sn (pure bright)
 - Accessories: Sn pure bright
- Packaging spec: See 65-14-920

		ACCESSORIES
500 Mating/unmating - gold contact area	D*****43***	ø3.10
200 Mating/unmating - gold contact area	D*****00***	
500 Mating/unmating - gold contact area	D*****43***	
200 Mating/unmating - gold contact area	D*****00***	
PROTECTION	PART NUMBER	PCB HOLE tin lead



ltr	ecn no	dr	date
A	L505-0039	LG0	02/05/05
-	-	-	-
-	-	-	-
-	-	-	-
-	-	-	-
-	-	-	-
-	-	-	-

FCI www.fciconnect.com			tolerance ISO 406 ISO 1101		projection 	mm
Dr	GOISNARD	02/05/05	Product family		D-SUB	size
Eng	PESSON	02/05/05	Spec ref		-	A3
Chr	LEGARE	02/05/05	Material		-	ECN
Appr	LEGARE	02/05/05				L505-0039
title			SUB RA & STRAIGHT			Rev.
			GENERAL CHARACTERISTICS			A
catalog no			- CUSTOMER COPY			sheet 1 of 1

European view

REFERENCE SPECIFICATIONS

-NFC 93425 (in compliance with HE 507)

PHYSICAL CHARACTERISTICS

-INSULATOR MATERIAL: THERMOPLASTIC UL94V0

-CONTACT MATERIAL: BRASS

-ACCESSORIES: BRASS

-SHELLS: STEEL

ELECTRICAL CHARACTERISTICS

-NOMINAL CURRENT: 7.5A

-CONTACT RESISTANCE: <= 7.3 m ohms

-CONTACT/CONTACT : >=1000 V

-CONTACT/GROUND : >=1200 V

-INSULATION RESISTANCE: >=5000 MOhms

ENVIRONMENTAL CHARACTERISTICS

- CLIMATIC CATEGORY: 55/125/21

TEMPERATURE RANGE -55°C TO +125°C

DAMP HEAT STEADY STATE 21 DAYS

SALT SPRAY 48 HOURS

MECHANICAL CHARACTERISTICS

RETENTION AGAINST TORQUE: - Threaded insert: 0.7 N.m minimum

- Female screw : 0.5 N.m minimum

NOTE RoHS INFORMATION

- The "LF" products meet european union Directives and other country regulations as described in GS-22-008.

- Termination plating spec:

Ni + Gold

- Active area plating spec:

Ni + Gold

- Shell plating :2 to 4µm Cu + Ni + 3 to 10µmm Sn,pure bright

- Accessories: Sn pure bright + nickel

- Packaging spec: See GS-14-920

Series

DBL13W3P043A00LF

Shell size: **E A B C D**
see sheet 3

Front accessory definition
see sheet 2

Blank :without accessory

L :threaded insert M3

O :threaded insert UNC 4-40

Layout of contacts (see sheet 3)

Contacts

P :Pin

Plating

Blank signal solder bucket 200 matings/unmatings

043 signal solder bucket 500 matings/unmatings

PCB accessory definition

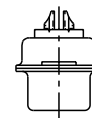
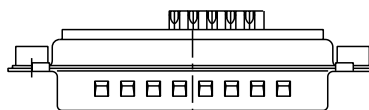
A without accessory on PCB

Power contacts

00 without power contact

See note RoHS

13W3 FOR EXAMPLE



rev	ccn no	dr	date
A	LS05-0101	MPE	2005-10-11
B	LS06-0208	LGO	2006-12-13
C	LS07-0173	MPE	2007-06-18
D	LS07-0273	MPE	2007-10-31
-	-	-	-
-	-	-	-
-	-	-	-

www.fciconnect.com			surface	ISO 1302	tolerance std	ISO 406	ISO 1101	projection	mm
			ANGULAR	LINEAR	0.X	±0.3	size	A2	Scale
			0° ±2°	0.xxx	±0.05	ECN	LS07-0273		
			Product family		- Spec ref				
FCI			SUB MALE DW		deg no		C01-8639-2307		Rev.
			mixed power+solder bucket				CUSTOMER		D
			catalog no				sheet 1 of 7		




FRONT ACCESSORY	Blank without	L insert M3
		O insert UNC 4.40
PCB ACCESSORIES	A without	A without

PART NUMBER	MATINGS/ UNMATINGS	FRONT ACCESSORY	PCB ACCESSORIES
D*xWxPA00LF	200	without	without
D*LxWxPA00LF	200	insert M3	without
D*OxWxPA00LF	200	insert UNC 4.40	without
D*xWxP043A00LF	500	without	without
D*LxWxP043A00LF	500	insert M3	without
D*OxWxP043A00LF	500	insert UNC 4.40	without

shell size # xWx

E 5W1
A 11W1
A 7W2
B 21W1
B 17W2
B 13W3
B 9W4
C 25W3
C 21WA4
C 27W2
D 47W1
D 24W7
D 36W4

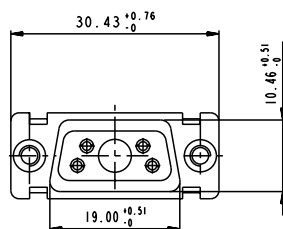
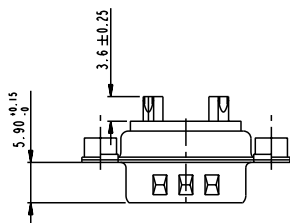
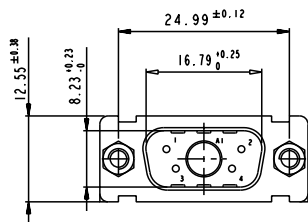
SCALE: 4

www.fciconnect.com			surface - <input checked="" type="checkbox"/> tolerance std ISO 1302 ISO 406 ISO 1101		projection 	mm 
TOLERANCES UNLESS OTHERWISE SPECIFIED						
Dr	M PESSON	2005-10-11	ANGULAR	0.X ±0.3	size A2	Scale 2:1
Eng	P LEGARE	2005-10-11	LINEAR	0.XX ±0.1		
Chr			0° ±2°	0.XXX ±0.05		
Appr			Product family		ECN	LS07-0273
					- Spec ref	
			SUB MALE DW		deg no	Rev.
			mixed power+solder bucket		C01-8639-2307	D
			catalog no	-	CUSTOMER	sheet 2 of 7

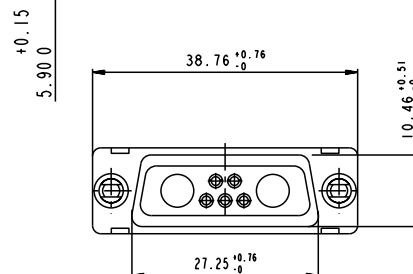
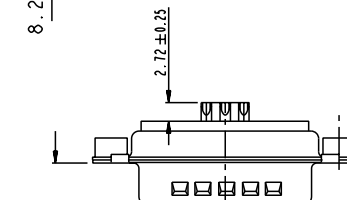
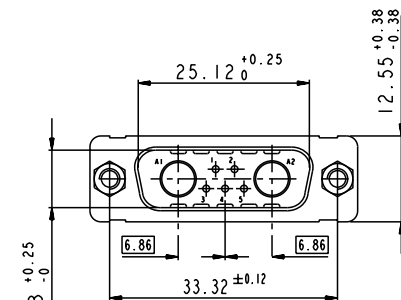
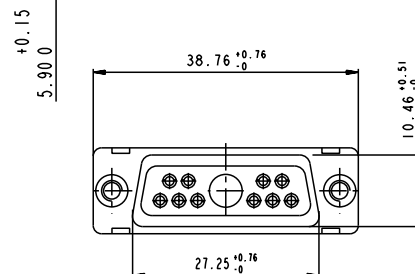
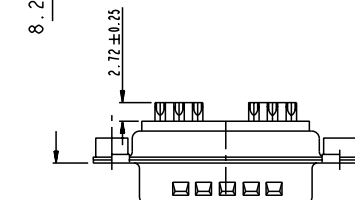
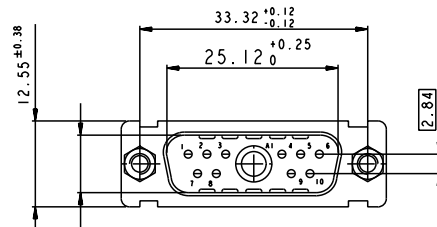
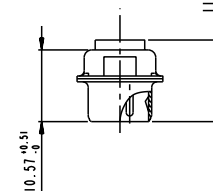
5W1

11W1

7W2

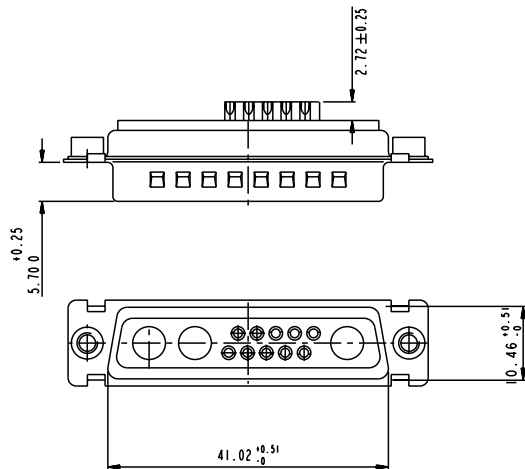
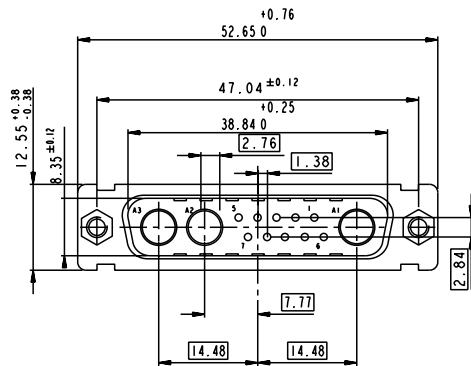


Floating signal contacts

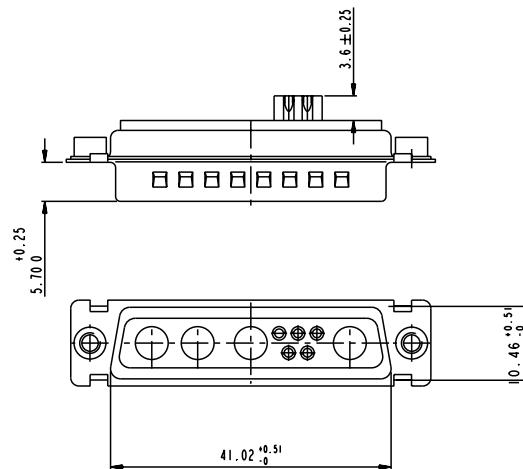
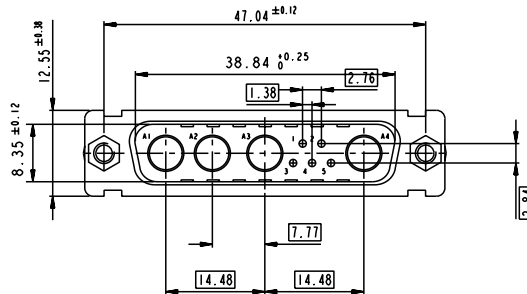
SIDE VIEW FOR
LAYOUTS: E A B C

www.fciconnect.com		surface - ✓	tolerance std	projection	mm
		ISO 1302	ISO 406 ISO 1101	ISO 1101	
		TOLERANCES UNLESS OTHERWISE SPECIFIED			
Dr	M PESSON	2005-10-11	ANGULAR	0.X ±0.3	size A2 Scale 2:1
Eng	P LEGARE	2005-10-11	LINEAR	0.XX ±0.1	ECN LS07-0273
Chr			0° ±2°	0.XXX ±0.05	
Appr			Product family	-	Spec ref
FCI		SUB MALE DW		dwg no	Rev.
		mixed power+solder bucket		C01-8639-2307	D
catalog no				CUSTOMER	sheet 3 of 7

13W3

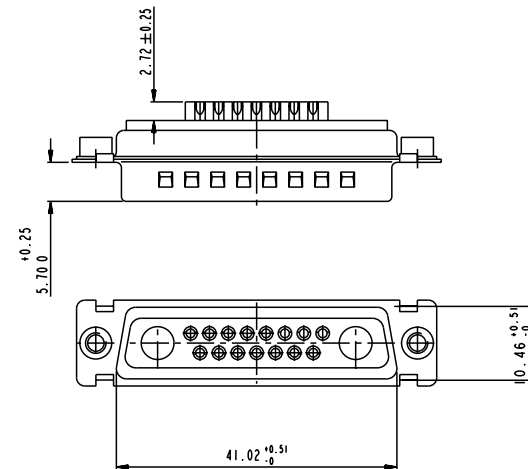
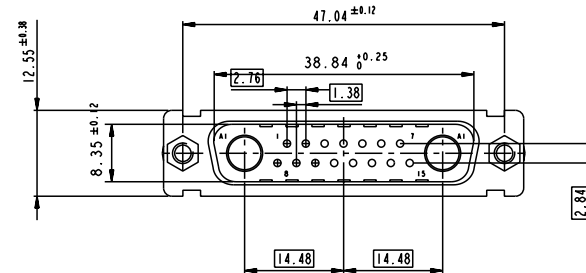


9W4



Floating signal contacts

17W2

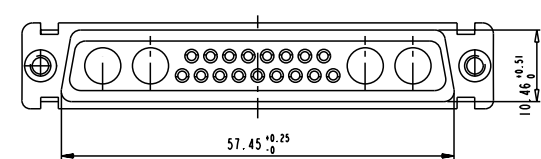
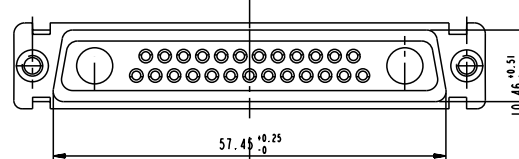
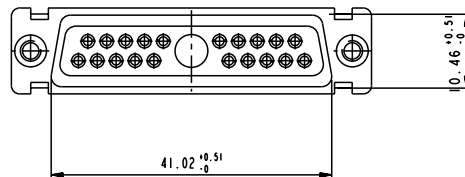
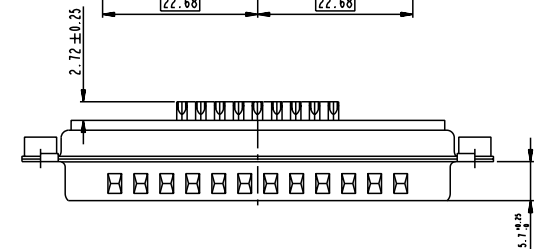
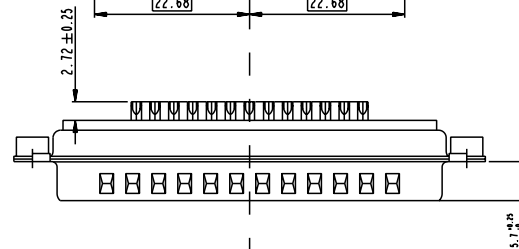
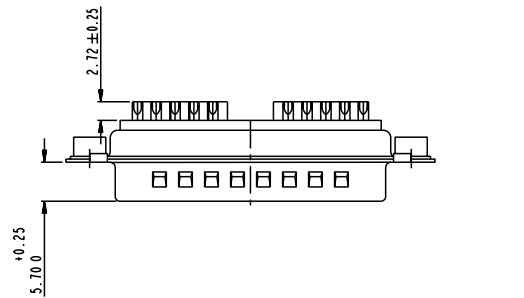
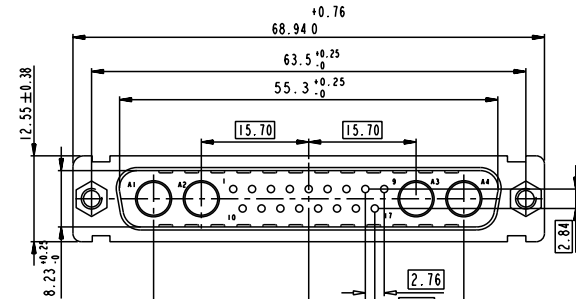
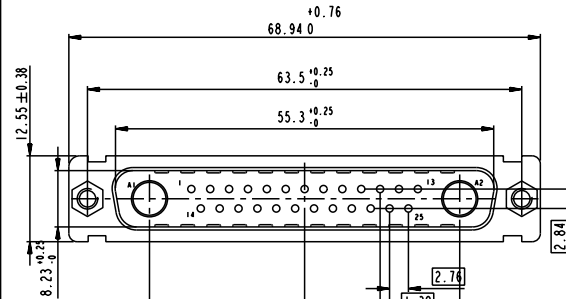
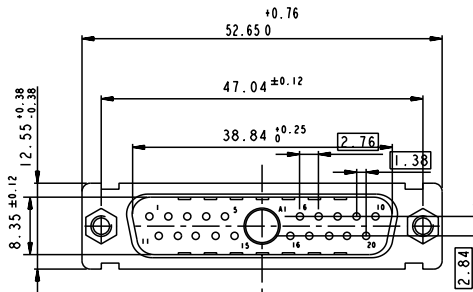


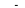



www.fciconnect.com		surface - ✓	tolerance std ISO 1302	projection	mm
		TOLERANCES UNLESS OTHERWISE SPECIFIED		⌀	mm
Dr	M PESSON	2005-10-11	ANGULAR	0.X	±0.3
Eng	P LEGARE	2005-10-11	LINEAR	0.XX	±0.1
Chr			0° ±2°	0.XXX	±0.05
Appr			Product family	-	Spec ref
FCI		SUB MALE DW		cat no	C01-8639-2307
		mixed power+solder bucket		Rev.	D
		CUSTOMER		sheet 4 of 7	

21WI

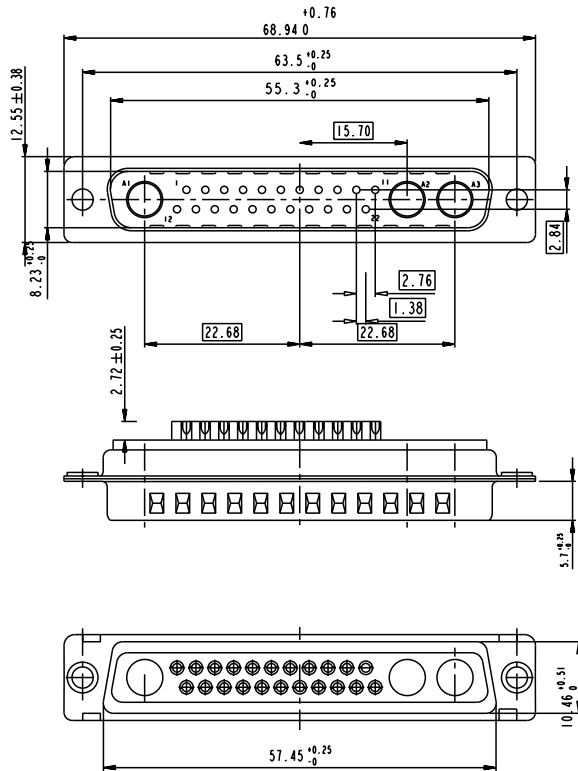
27W2

21WA4

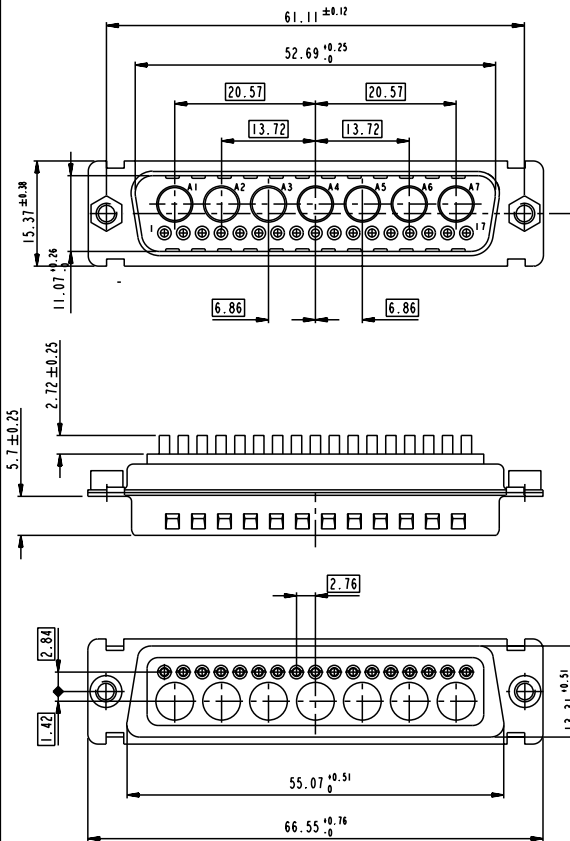
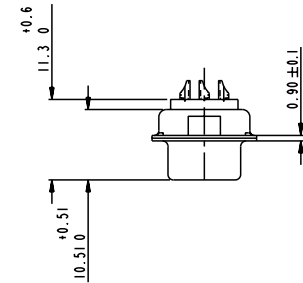





www.fciconnect.com			surface - 		tolerance std		projection		mm	
			ISO 1302		ISO 406 ISO 1101					
TOLERANCES UNLESS OTHERWISE SPECIFIED										
Dr	M PESSON	2005-10-11	ANGULAR	LINEAR	0.X ±0.3		size	A2	Scale 2:1	
Eng	P LEGARE	2005-10-11			0.XX ±0.1					
Chr			0° ±2°		0.XXX ±0.05		ECN	LS07-0273		
Appr			Product family				Spec ref			
			SUB MALE DW		dwg no		C01-8639-2307		Rev. D	
			mixed power+solder bucket							
catalog no							CUSTOMER		sheet 5 of 7	

25W3



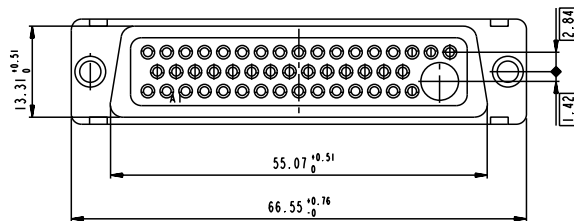
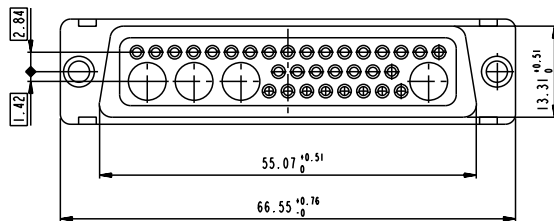
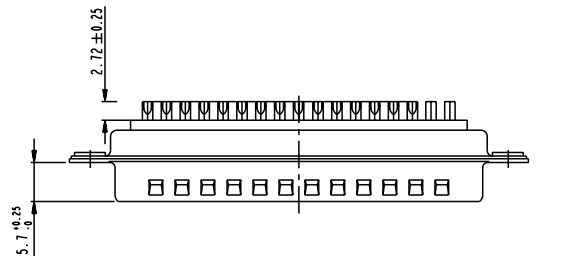
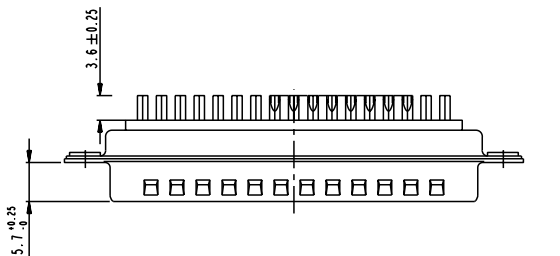
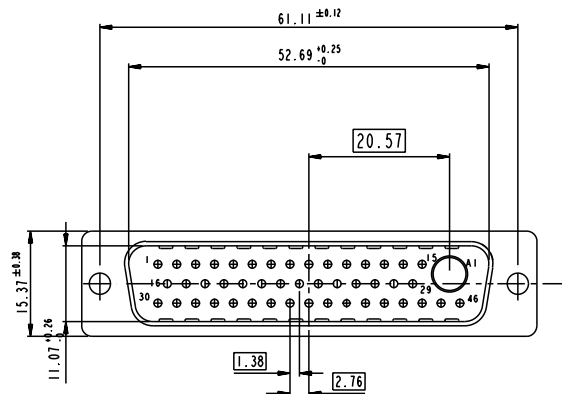
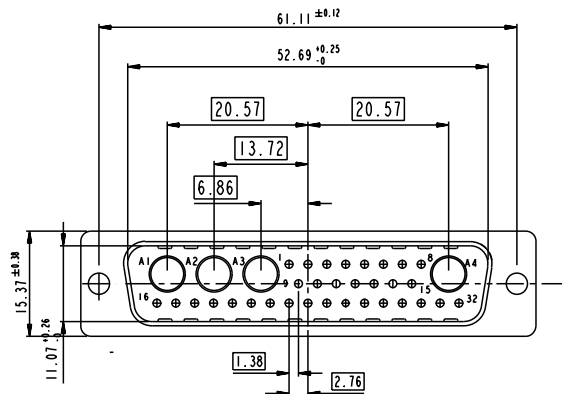
24W7

SIDE VIEW FOR
LAYOUT: D

www.fciconnect.com			surface - <input checked="" type="checkbox"/> ISO 1302		tolerance std ISO 406 ISO 1101		projection 		mm 	
TOLERANCES UNLESS OTHERWISE SPECIFIED										
Dr	M PESSON	2005-10-11	ANGULAR		0.X ± 0.3		size A2	Scale 2:1		
Eng	P LEGARE	2005-10-11	LINEAR		0.XX ± 0.1					
Chr			0° $\pm 2^\circ$		0.XXX ± 0.05					
Appr			Product family					- Spec ref		
			SUB MALE DW			dwg no C01-8639-2307			Rev. D	
			mixed power+solder bucket			catalog no			CUSTOMER	
						sheet 6 of 7				

36W4

47W1



Floating signal contacts

www.fciconnect.com			surface - ✓	tolerance std ISO 1302	ISO 406	ISO 1101	projection	mm
			TOLERANCES UNLESS OTHERWISE SPECIFIED				⌀	↗
Dr	M PESSON	2005-10-11	ANGULAR	0.X	±0.3	size	A2	Scale 2:1
Eng	P LEGARE	2005-10-11	LINEAR	0.XX	±0.1	ECN	LS07-0273	
Chr			0° ±2°	0.XXX	±0.05	Product family	-	Spec ref
Appr								
FCI			SUB MALE DW			dwg no	C01-8639-2307	
			mixed power+solder bucket			Rev.	D	
			catalog no	-	CUSTOMER	sheet	7 of 7	