

Help with choosing the right products

Every area a cable management product is used requires an element of health and safety consideration to protect against loss, damage or increased risk of fatalities. To help you make the right choices depending on the installation, HellermannTyton has developed a simple graphical key. Look out for these icons throughout this section.



Construction



Water



Railway



Electricity



Aerospace



Telecommunications



Automotive



Gas



Defence



Utilities



High Chemical Resistance



Tamper Proof



LFH



Low Smoke/fumes



High Oxygen Index



High Temperature Resistance



High Abrasion Resistance



High Strength



VO



Resistance to Moisture



Zero Conductivity



Metal Detectable



Halogen Free



High Resistance to UV Light

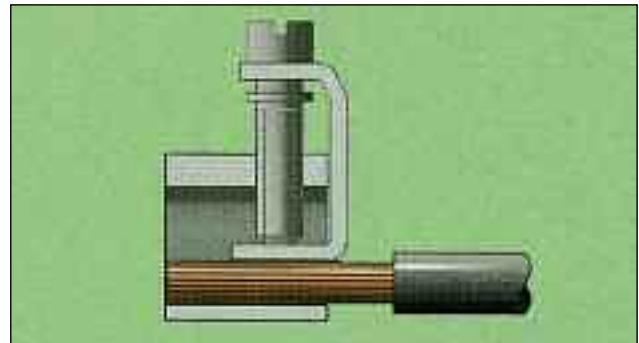
HellermannTyton market a wide range of specialised and commonly used wiring accessories. Through our global manufacturing sites and global supplier network we are to bring to you the highest quality, value for money wiring accessories on the market along with the latest product innovations.

Page

7.1	Terminals & Connectors	180-185
7.2	Din Rail	186-187
7.3	Brass Cable Glands	188-190
7.4	Nylon Cable Glands	191
7.5	Cable Fixings	192
7.6	Fixings	193
7.7	Cable Connection	194
7.8	Terminal & Line Taps	195
7.9	Circuit Protection & Control	196
7.10	Miniature Circuit Breakers	197
7.11	Terminals	198-200

Feed Through Rail Mount Terminal Blocks

- Conforms to all major international standards including UL, cUL, CSA, KEMA and LR
- Ex-e Certified
- Self extinguishing UL94V-0 material
- Polyamide material for use between -30°C to +110°C
- Full range of accessories available
- Current ratings up to 192 Amps (to IEC standards)
- Top Hat / G Rail
- Blue EXI version available on request



Feed Through Rail Mount Terminal Blocks

Reference	Rated Wire (flexible)	Current Rating	Terminal Width	Pack Qty	Price
CBD.2	0.5-4mm ²	24A	5.5	10	£4.86
CBD.4	0.5-6mm ²	32A	6.5	10	£5.37
CBD.6	0.5-10mm ²	41A	8	10	£7.20
CBD.10	0.5-16mm ²	57A	10	10	£8.83
CBD.16	0.5-25mm ²	76A	12	5	£6.19
CBD.35	0.5-35mm ²	101A	16	5	£10.60
CBD.50	1.5-50mm ²	125A	18	5	£13.62
CBD.70	1.5-95mm ²	192A	20.5	5	£31.07



CBD2



CBD4



CBD6



CBD10



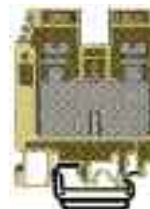
CBD16



CBD35



CBD50



CBD70

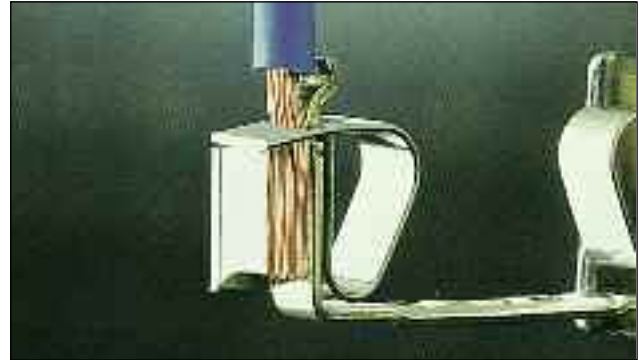
End Sections for Above Terminals

Reference	Description	Pack Qty	Price
CB.2/PT	End Section For CBD.2	10	£1.77
CB.4/6/PT	End Section For CBD.4 & CBD.6	10	£2.27
CB.10/PT	End Section For CBD.10	10	£2.47
CB.16/PT	End Section For CBD.16	5	£1.32
CB.35/PT	End Section For CBD.35	5	£1.46
CB.50/PT	End Section For CBD.50	5	£1.46
CB.70/PT	End Section For CBD.70	5	£2.47



Spring Clamp Terminal Blocks

- Reduces wiring time
- Spring clamp connection offers excellent resistance to vibration
- 35mm, 15mm Top Hat rail and panel mount types
- Wide range including standard wire-through, multi-input, multi-output, blade and fuse disconnect, earth terminals and double decker types
- UL, cUL, KEMA, LR and RINA approvals



Spring Clamp Terminal Blocks					
Reference	Rated Wire	Current Rating Amps	Terminal Width	Pack Qty	Price
HMM.2	2.5mm ²	24A	2.5mm ²	10	£5.80
HMM.4	4mm ²	32A	4mm ²	10	£6.31
HMM.6	6mm ²	41A	4mm ²	10	£7.94

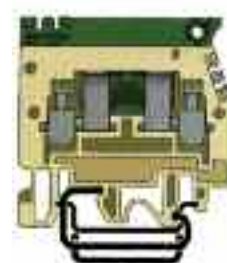


End Sections for Above Terminals			
Reference	Description	Pack Qty	Price
HMT.2/PT	End Section For HMM.2	10	£1.89
HMT.4/PT	End Section For HMM.4	10	£2.40
HMT.6/PT	End Section For HMM.6	10	£2.40



Fused Terminals

- A range of 4mm², 10mm², and 16mm² fuse terminals
- Suitable for current ratings up to 25A
- Designed for use with fuse sizes 5x20mm, 6.3x32mm and 14x51mm
- 10mm² and 16mm² fuse terminals available on request



Fused Terminals					
Reference	Description	Current Rating Amps	Terminal Width	Pack Qty	Price
SFR.4/6	Linking Blade Disconnect With 5x20mm Fuse Holder	6.3A	70	10	£30.29

End Sections for Above Terminals			
Reference	Description	Pack Qty	Price
SFR/PT	End Section For SFR.4	10	£3.67

Earth Terminals

- Polyamide insulator
- Available as 35mm Top Hat and 32mm G Rail types in screw clamp fixing form
- TEO.2 earth terminal, suitable for 35mm Top Hat rail mounting through blade connect system to rail
- Copper/zinc alloy, high percentage of copper conductor



Reference	Rated Wire	Description	Pack Qty	Price
TEO.2	Earth Terminal 2.5mm ²	35mm Rail	1	£1.56
TEO.4	Earth Terminal 4mm ²	35mm Rail	1	£1.83
TE.6/0	Earth Terminal 6mm ²	35mm Rail	1	£2.21
TE.10/0	Earth Terminal 10mm ²	35mm Rail	1	£3.99
TE.16/0	Earth Terminal 16mm ²	35mm Rail	1	£2.90
TE.4/D	Earth Terminal 4mm ²	G Rail	1	£2.09
TE.6/D	Earth Terminal 6mm ²	G Rail	1	£2.40
TE.10/D	Earth Terminal 10mm ²	G Rail	1	£4.10
TE.16/D	Earth Terminal 16mm ²	G Rail	1	£3.28
TE.50/D	Earth Terminal 50mm ²	G Rail	1	£6.31
CBC2/4PT	End section for TEO.4 terminal		50	£12.74

Cross Connections

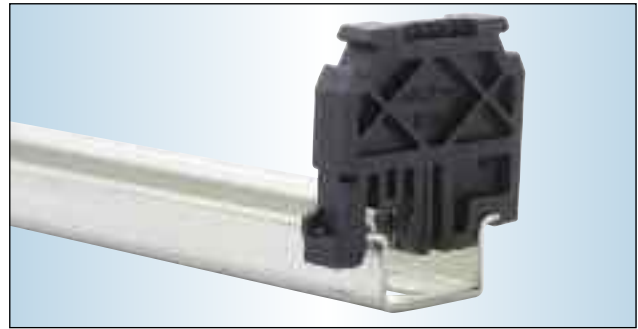
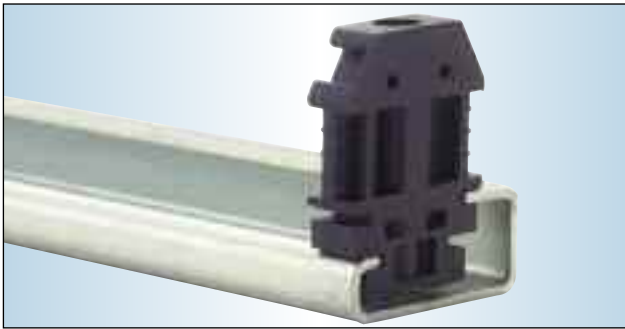
For connecting 2 or more terminals via link.
Screw and distance sleeve included with 2 way kit, to be ordered separately for multipole commoning bar.



Reference	Description	For Terminal Type	Pack Qty	Price
PMP/01	45 Way Multiple Connecting Bar	CBD.2	2M (8x250mm)	£9.98
PMP/42	38 Way Multiple Connecting Bar	CBD.4	2M (8x250mm)	£11.99
PMP/13	31 Way Multiple Connecting Bar	CBD.6	2M (8x250mm)	£13.37
PMP/04	25 Way Multiple Connecting Bar	CBD.10	2M (8x250mm)	£16.43
PMP/05	21 Way Multiple Connecting Bar	CBD.16	2M (8x250mm)	£17.86
PMP/06	16 Way Multiple Connecting Bar	CBD.35	2M (8x250mm)	£18.73
PMP/07	14 Way Multiple Connecting Bar	CBD.50	2M (8x250mm)	£19.66
PMP/08	12 Way Multiple Connecting Bar	CBD.70	2M (8x250mm)	£19.66
CPM/21	Screw And Distance Sleeve For PMP/01	CBD.2	25	£6.70
CPM/12	Screw And Distance Sleeve For PMP/42	CBD.4	25	£6.70
CPM/83	Screw And Distance Sleeve For PMP/13	CBD.6	25	£7.82
CPM/03	Screw And Distance Sleeve For PMP/04	CBD.10	25	£7.82
CPM/44	Screw And Distance Sleeve For PMP/05	CBD.16	25	£8.39
CPM/06	Screw And Distance Sleeve For PMP/06	CBD.35	10	£5.37
CPM/07	Screw And Distance Sleeve For PMP/07	CBD.50	10	£6.69
CPM/08	Screw And Distance Sleeve For PMP/08	CBD.70	15	£6.19
POF/44	2 Way Link Including Distance Sleeve/Screws	CBD.16	25	£20.81
POF/06	2 Way Link Including Distance Sleeve/Screws	CBD.35	15	£13.06
POF/07	2 Way Link Including Distance Sleeve/Screws	CBD.50	15	£14.74
POF/08	2 Way Link Including Distance Sleeve/Screws	CBD.70	15	£15.74

End Brackets

- Top hat or G Rail end brackets



End Brackets			
Reference	Description	Pack Quantity	Price
BT/3	End Bracket For 35mm Top Hat Rail	25	£10.10
BT/DIN/PO	End Bracket For 32mm G Type Rail	25	£10.10
BT/U	Universal End Bracket 32/35mm Top Hat/G-Type Rail	25	£10.10

Coloured Cross Connection Barriers

Red coloured in polyamide when it is necessary to guarantee the insulation distance between permanent or switchable cross connections, inserted between adjacent pairs of terminal blocks.



Coloured Cross Connection Barrier			
Reference	Description	Pack Qty	Price
DFM/600	CBD.2, CBD.4, CBD.6	50	£10.06
DFM/700	CBD.10, CBD.16, CBD.25, CBD.35, CBD.70	50	£12.29

Coloured Partitions For Rail Mount Terminals

In polyamide available in green, red and white colour for the separation of elements on the terminal board, in order to make certain circuits easy to locate or to increase the insulation distances between terminal blocks.



Coloured Partitions		Pack Qty	Price
Reference	To Fit Screw Clamp Terminal		
DFU/1	CBD.2,	25	£10.10
DFU/4	CBD.4, CBD.6, CBD.10, CBD.16	25	£12.62
DFU/5	CBD.25, CBD.35	25	£13.88
DFU/6	CBD.70	25	£15.78

Available in green, red or white.

Quick Attaching Clip-on Marker

Quick attaching clip-on marker tags allowing the composition of identification markings, also alphanumerical for circuits.



Type CSC/			
Reference	Composition	Minimum Order	Price Per Card Of 500 Tags
CSC/09	0 to 9	500 Tags	£13.13
CSC/00	0	500 Tags	£13.13
CSC/11	1	500 Tags	£13.13
CSC/AA	A	500 Tags	£13.13

For other identical numbers/letters the reference is CSC/(state number or letter required)

Marking Systems

Marking tags ideal for marking all terminals, the black on white marker is attached directly into position either before or after composition of the terminal board.



Type CNU/8/				
Reference	Description	Marking	Minimum Order Qty	Price Per Card Of 500 Tags
CNU/8/001		1 to 50	500	£12.50
CNU/8/051		51 to 100	500	£12.50
CNU/8/301		301 to 350	500	£12.50

For other progressive series of 50 digits the reference is CNU/8/state the initial number

CNU/8/510		1 to 10	500	£12.50
CNU/8/600		91 to 100	500	£12.50
CNU/8/030	Blank Marker Card	Blank	500	£12.50
CB/CTL/BLACK	Black Marker Pen			£3.88

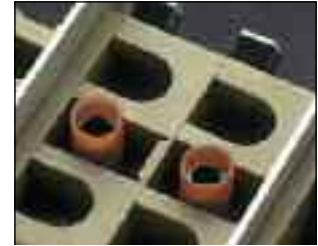
SDD Test Plugs and PSD Sockets

For measuring and testing circuits which are linked up to terminal boards, special accessories are provided, such as;

- Insulated PSD sockets which can be screwed onto the conducting body of the terminal blocks
- Bundle-type SDD, plugs in silvered brass



SDD



PSD

SDD Test Plugs and PSD Sockets					
Terminal Block	Socket Type	PSD Price	Plug Type	SDD Price	Pack Qty
CBD.2	PSD/D	£13.10	SDD/1	£61.74	25
CBD.4	PSD/A	£13.10	SDD/1	£61.74	25
CBD.6	PSD/N	£16.13	SDD/1	£61.74	25
CBD.10	PSD/B	£23.62	SDD/2	£68.27	25
CBD.16	PSD/B	£21.26	SDD/2	£68.27	25
CBD.35	PSD/B	£21.26	SDD/2	£68.27	25
CBD.50	PSD/C	£21.48	SDD/2	£68.27	25
CBD.70	PSD/C	£21.48	SDD/2	£68.27	25

Distribution Terminal Boards

- With UL94V-0 polyamide 6.6 insulated body
- Din rail mounted
- 100 to 160 amps
- Cross section from 6 to 50mm
- Rated to 500V
- Plexiglass cover



Distribution Terminal Boards					
Reference	No of Bars	No of Holes Per Bar	Cross Section	Voltage	Price Each
POLM 4/100	4	7	6-16mm ²	500	£16.40
POLM 4/125	4	11	6-35mm ²	500	£31.54
POLM 4/126	4	15	6-35mm ²	500	£32.81
POLM 4/160	4	8	6-50mm ²	500	£44.17
POLM 4/161	4	13	6-50mm ²	500	£53.00

DIN Rail

A range of Top Hat and G-Type rail, zinc coated, plain or slotted.

Available in 1 or 2 metre length.



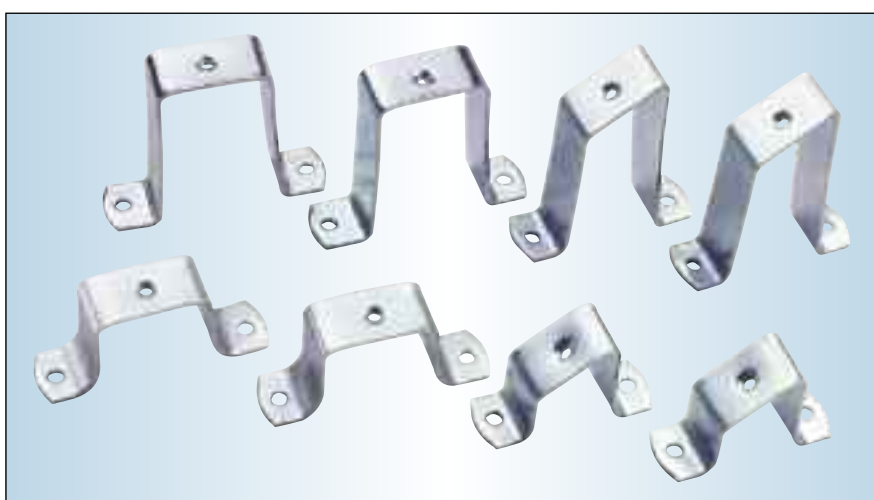
DIN Rail

Reference	Description	Type	Rail Depth	Rail Width	Rail Length	Pack Quantity	Price
TS15	Mini Top Hat	Standard	5.5 x 10.5	15mm	2m	20 x 2	£24.80
TS15/F		Slotted		15mm	2m	20 x 2	£38.68
TS32	G Type	Standard		32mm	2m	20 x 2	£49.73
TS32/F		Slotted		32mm	2m	20 x 2	£52.59
TS35	Top Hat	Standard	7.5 x 27	35mm	2m	20 x 2	£33.35
TS35/F		Slotted		35mm	2m	20 x 2	£35.01
TS35/S		Standard	10 x 27	35mm	2m	20 x 2	£40.35
TS35/C	Deep Top Hat	Standard	15 x 27	35mm	2m	20 x 2	£48.67
TS35/CF		Slotted		35mm	2m	20 x 2	£53.08
TS35/C1	Deep Top Hat	Standard	15 x 24	35mm	2m	20 x 2	£80.71
TS15/F.10	Top Hat	Slotted	5.5 x 10.5	15mm	1m	10 x 1	£37.21
TS32.10	G Type	Standard		32mm	1m	10 x 1	£17.35
TS32/F.10		Standard		32mm	1m	10 x 1	£18.95
TS35.10	Top Hat	Standard	7.5 x 27	35mm	1m	10 x 1	£12.75
TS35/FP.10	Top Hat		Slotted		7.5 x 27	1m	10 x 1

Galvanised and aluminum available on request.

Mounting Brackets

Reference	Type	Height	Fixing	Pack Quantity	Price
BK0425	Angled	42mm	M6	2	£0.84
TS-SM6	Angled	48mm	M6	1	£0.39
BK0805	Angled	82mm	M6	2	£0.84
BK0201	Straight	20mm	M6	2	£0.97
BK0441	Straight	41mm	M6	2	£1.09
BK0706	Straight	70mm	M6	2	£1.34
BK0904	Straight	90mm	M6	2	£2.61
CSK6.3	Screws to Suit		M6	10	£0.98



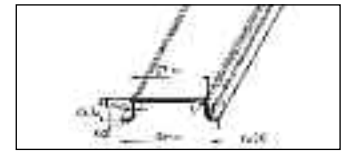
TS 35

Symmetrical 'Top Hat' style steel rail.

Standards: DIN 46277 CENELEC EN 50.022

Pack quantity: 40m (or 10 x 1m)

Weight: 0.35 kg/m Also available in galvanised ref TS 35 G

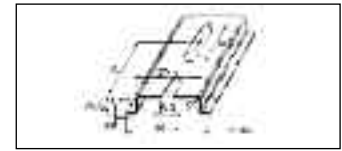
**TS 35 F**

Slotted version of TS 35.

Standards: DIN 46277 CENELEC EN 50.022

Pack quantity: 40m (or 10 x 1m)

Weight: 0.30 kg/m

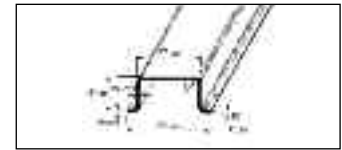
**TS 35 C**

15mm deep version of TS 35.

Standards: CENELEC EN 50.022

Pack quantity: 40m

Weight: 0.67 kg/m

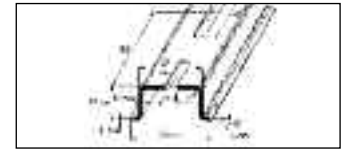
**TS 35 CF**

Slotted version of TS 35 C.

Standards: CENELEC EN 50.022

Pack quantity: 40m

Weight: 0.615 kg/m

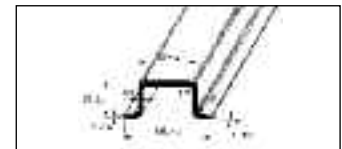
**TS 35 C1**

Symmetrical steel rail.

Standards: CENELEC EN 50.022

Pack quantity: 40m

Weight: 0.95 kg/m

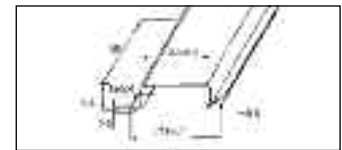
**TS 35 S**

10mm deep version of Type TS 35.

Standards: DIN 46277 CENELEC EN 50.022

Pack quantity: 40m

Weight: 0.39 kg/m

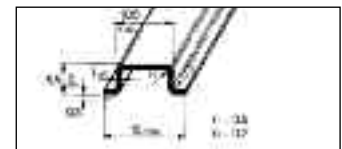
**TS 15**

Plain symmetrical rail for terminal block mounting.

Standards: DIN 46277

Pack quantity: 40m

Weight: 0.165 kg/m

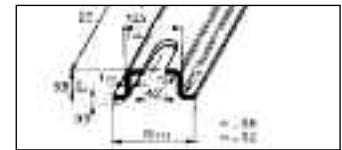
**TS 15 F**

Slotted version of TS 15.

Standards: DIN 46277

Pack quantity: 40m

Weight: 0.14 kg/m

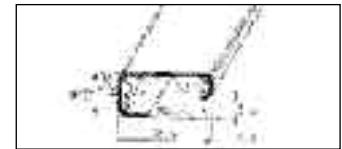
**TS 32**

Plain assymmetric steel rail punched for drilling.

Standards: DIN 46277 CENELEC EN 50.035

Pack quantity: 40m (or 10 x 1m)

Weight: 0.73 kg/m Also available in galvanised ref TS 32 G

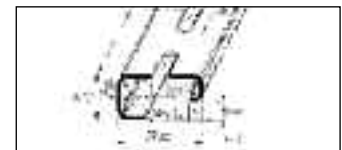
**TS 32 F**

Slotted version of TS 32.

Standards: DIN 46277 CENELEC EN 50.035

Pack quantity: 40m (or 10 x 1m)

Weight: 0.69 kg/m



Gland Selection Chart For PVC SWA PVC Cables

Cable Cond. Size		Number of Cores													
Area mm ²	Neutral	1	2	3	3½	4	5	7	10	12	19	27	37	48	
1.5	-	-	20S	20S	-	20S	20S	20S	20	20	25	25	32	32	
2.5	-	-	20S	20S	-	20S	20S	20	25	25	25	32	32	40	
4	-	-	20S	20S	-	20	20	25	25	25	32	40	40	50	
6	-	-	20S	20	-	20									
10	-	-	25	25	-	25									
16	-	-	25	25	-	25									
25	16	-	25	25	32	32									
35	16	-	25	32	32	32									
50	25	25	32	32	32	40									
70	35	25	32	40	40	40									
95	50	25	40	40	50	50									
120	70	25	40	50	50	50									
150	70	32	40	50	50	50									
185	95	32	50	50	63	63									
240	120	40	50	63	63	63									
300	150	40	63	63	75	75									
300	185	-	-	-	75	-									
400	185	50	63	75	75	75									
500	-	50													
630	-	50													
800	-	63													
1000	-	63													

Glands manufactured as per
BS 6121 PT1: 1989
For use with PVC SWA PVC 600/1000V Cables

This selection chart is given for guidance only.
Actual cable dimension must be considered
before making final selection.

★ **GLAND KIT**

Type BW Indoor Gland

- For use with all types of SWA cables to BS6346
- For use indoors in dry locations
- Simple two part design with low resistance armour locking and no sealing

Type BW Indoor Gland

Reference	Description	Quantity	Price
BW20S	20mm Small	2	£1.33
BW20	20mm Standard	2	£1.47
BW25	25mm Standard	2	£2.89
BW32	32mm Standard	2	£4.68
BW40	40mm Standard	1	£4.74
BW50	50mm Standard	1	£6.37
BW63	63mm Standard	1	£10.00
BW75	75mm Standard	1	£16.63



Type CW Industrial Gland

- For use with all types of SWA cables to BS6346
- For use indoors and outdoors whenever it is required to provide a sealing on the cable outer sheath
- CW glands are weatherproof and can be used in corrosive conditions when protected with a shroud
- Positive armour locking, effective earth continuity, increased mechanical strength

Type CW Industrial Gland

Reference	Description	Quantity	Price
CW20S	20mm Small	2	£2.74
CW20	20mm Standard	2	£3.74
CW25	25mm Standard	2	£5.79
CW32	32mm Standard	2	£8.00
CW40	40mm Standard	1	£8.32
CW50	50mm Standard	1	£9.58
CW63	63mm Standard	1	£15.58
CW75	75mm Standard	1	£26.32



Type BW Indoor Gland – LSF

- BW LSF Gland for use on LSF cables and hazardous area applications.
- For use with all types of BW cables
- For use indoors in dry locations
- Simple two part design with low resistance armour locking and no sealing
- BW Gland LSF compliant as per BS 6724: 1990



Type BW Indoor Gland LSF			
Reference	Description	Qty	Price
LSFBW20S	20mm Small LSF	2	£1.91
LSFBW20	20mm Standard LSF	2	£2.13
LSFBW25	25mm Standard LSF	2	£4.18
LSFBW32	32mm Standard LSF	2	£6.77
LSFBW40	40mm Standard LSF	1	£6.85
LSFBW50	50mm Standard LSF	1	£9.21
LSFBW63	63mm Standard LSF	1	£14.46
LSFBW75	75mm Standard LSF	1	£24.04

Type CW Industrial Gland – LSF

- For use with all type of SWA cables
- For use indoors and outdoors whenever it is required to provide a sealing on the cable outer sheath
- CW glands are weatherproof and can be used in corrosive conditions when protected with a shroud
- Positive armour locking, effective earth continuity, increased mechanical strength
- CW Gland LSF compliant as per BS 6724: 1990



Type CW Industrial Gland LSF			
Reference	Description	Qty	Price
LSFCW20S	20mm Small LSF	2	£3.96
LSFCW20	20mm Standard LSF	2	£5.40
LSFCW25	25mm Standard LSF	2	£8.37
LSFCW32	32mm Standard LSF	2	£11.57
LSFCW40	40mm Standard LSF	1	£12.02
LSFCW50	50mm Standard LSF	1	£13.85
LSFCW63	63mm Standard LSF	1	£22.52
LSFCW75	75mm Standard LSF	1	£38.04

Type BWR Three Part Gland

- For use with all types of SWA cables to BS6346
- For use indoors in dry locations
- Positive armour locking, effective earth continuity, increased mechanical strength

Type BWR Three Part Gland			
Reference	Description	Quantity	Price
BWR20S	20mm Small	2	£2.01
BWR20	20mm Standard	2	£2.23
BWR25	25mm Standard	2	£4.62
BWR32	32mm Standard	2	£7.24
BWR40	40mm Standard	1	£6.74
BWR50	50mm Standard	1	£12.39
BWR63	63mm Standard	1	£18.48
BWR75	75mm Standard	1	£41.14



Type E1W Industrial Gland

- For use with all types of SWA cables to BS6346
- Application indoor and outdoor whenever it is required to provide sealing on cable outer sheath as well as inner sheath
- E1W glands are weatherproof and can be used in corrosive conditions when protected with a shroud

Type E1W Industrial Gland			
Reference	Description	Quantity	Price
E1W20S	20mm Small	2	£5.66
E1W20	20mm Standard	2	£7.10
E1W25	25mm Standard	2	£11.15
E1W32	32mm Standard	2	£18.52
E1W40	40mm Standard	1	£15.07
E1W50	50mm Standard	1	£18.13
E1W63	63mm Standard	1	£30.13
E1W75	75mm Standard	1	£49.50



Type LXT Light Duty Industrial Gland

- For use with flexible wire braided cable e.g. SY/CY cable

Type LXT Industrial Gland			
Ref	Description	Quantity	Price
LXT20S	20mm Small	2	£4.30
LXT20	20mm Standard	2	£4.30
LXT25	25mm Standard	2	£7.83
LXT32	32mm Standard	2	£11.74
LXT40	40mm Standard	1	£18.26
LXT50	50mm Standard	1	£23.48



Nylon Cable Glands with Lock Nuts

A comprehensive range of Nylon cable glands available with Metric or PG threads and suitable for use with cables up to 32mm dia. The glands are available in a range of colours.

- Made from Nylon 6 offering excellent chemical resistance
- Temperature range -30°C to +80°C
- Smooth bore permits quick assembly - no need to dismantle
- Advanced design improves cap/cable compression
- Acme threads eliminate cross threading
- Metric glands available in grey, light grey, black, white and red
- PG glands available on request
- Neoprene gasket ensures waterproof sealing up to IP68
- UL and VDE approved



Nylon Cable Glands								
Reference Black	Reference Grey	Reference Red	Reference White	Thread Size	Thread Length	Cable Diameter	Box Qty	List Price
NGM12-BLK	NGM12-GRY	NGM12-RED	NGM12-WHT	M12	8mm	3.6-5mm	100	£42.98
NGM16-BLK	NGM16-GRY	NGM16-RED	NGM16-WHT	M16	10mm	5-10mm	50	£21.54
NGM16L-BLK	NGM16L-GRY	NGM16L-RED	NGM16L-WHT	M16	15mm	5-10mm	50	£21.54
NGM20-BLK	NGM20-GRY	NGM20-RED	NGM20-WHT	M20	10mm	6-12mm	50	£24.83
NGM20M-BLK	NGM20M-GRY	NGM20M-RED	NGM20M-WHT	M20	10mm	10-14mm	50	£28.61
NGM20L-BLK	NGM20L-GRY	NGM20L-RED	NGM20L-WHT	M20	15mm	10-14mm	50	£29.94
NGM25-BLK	NGM25-GRY	NGM25-RED	NGM25-WHT	M25	10mm	13-18mm	25	£24.61
NGM25L-BLK	NGM25L-GRY	NGM25L-RED	NGM25L-WHT	M25	15mm	13-18mm	25	£26.16
NGM32-BLK	NGM32-GRY	-	-	M32	18mm	18-25mm	20	£31.20
NGM40-BLK	NGM40-GRY	-	-	M40	18mm	22-32mm	20	£66.83
NGM50-BLK	NGM50-GRY	-	-	M50	18mm	30-38mm	10	£58.33
NGM63-BLK	NGM63-GRY	-	-	M63	18mm	34-44mm	10	£73.14

Fixings For Cables

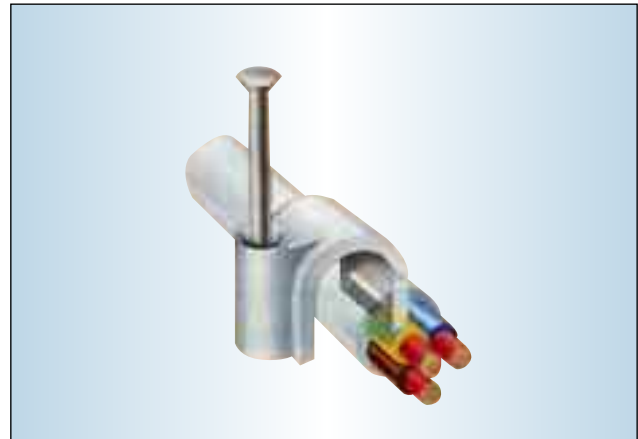
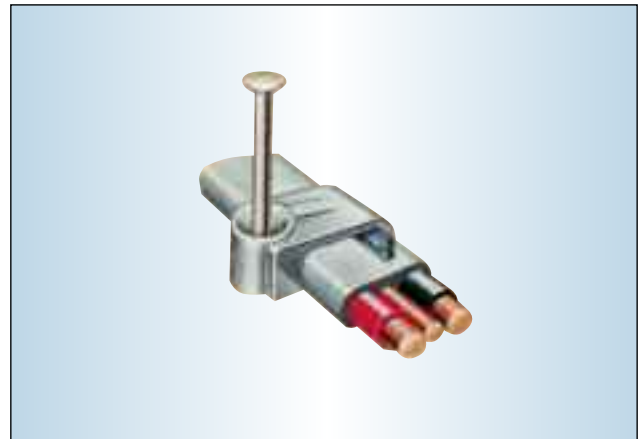
Range of domestic cable clips for round and flat cables.

Cable Clips - Flat Twin & Earth				
Reference	Cable Diameter	Colour	Pack Quantity	Price
061070406	1.0mm ²	White	1000	£16.61
061090506	1.5mm ²	White	1000	£17.72
061100506	2.5mm ²	White	1000	£17.72
061130606	4.0mm ²	White	1000	£26.50
061140706	6.0mm ²	White	1000	£26.00
061180906	10.0mm ²	White	1000	£38.67
061070408	1.0mm ²	Grey	1000	£16.61
061090508	1.5mm ²	Grey	1000	£17.72
061100508	2.5mm ²	Grey	1000	£17.72
061130608	4mm ²	Grey	1000	£26.50
061140708	6mm ²	Grey	1000	£26.00
061180908	10mm ²	Grey	1000	£38.67

Black available on request

Cable Clips - Round				
Reference	Cable Diameter	Colour	Pack Quantity	Price
060003506	3.5mm ²	White	1000	£15.78
060004506	4.5mm ²	White	1000	£15.11
060005006	5mm ²	White	1000	£17.33
060006006	6mm ²	White	1000	£18.78
060007006	7-8mm ²	White	1000	£17.33
060009006	9-10mm ²	White	1000	£28.56
0600011006	11-12mm ²	White	1000	£33.00
0600014006	14mm ²	White	1000	£28.06

Black available on request



Thunderbolt - The All Purpose Self Tapping Anchor Fixing

- Self-fixing anchor bolt
- Quick fixing
- High grade steel allows strong and secure fixing
- Re-useable
- Security options
- No expansion force means close to edge fixing
- Save time on installation
- Concrete, brick, wood, marble, block, stone - it stops at nothing!

Thunderbolt					
Reference	Head Type	Size (mm)	Drill Bit	Pack Qty	Price
390520THUN	Hexagon Flange	5x30	5mm	200	£30.95
390522THUN	Hexagon Flange	5x50	5mm	100	£16.42
390524THUN	Hexagon Flange	5x75	5mm	100	£20.35
390105THUN	Hexagon Flange	6x50	6mm	100	£24.70
390106THUN	Hexagon Flange	6x75	6mm	100	£33.03
390107THUN	Hexagon Flange	6x100	6mm	100	£38.16
390200THUN	Hexagon	8x60	8mm	100	£31.17
390202THUN	Hexagon	8x75	8mm	100	£37.33
390201THUN	Hexagon	8x100	8mm	100	£51.88
390301THUN	Hexagon	10x75	10mm	50	£26.58
390302THUN	Hexagon	10x100	10mm	50	£35.04
390303THUN	Hexagon	10x150	10mm	20	£21.48
390401THUN	Hexagon	12x75	12mm	50	£36.22
390402THUN	Hexagon	12x100	12mm </td <td>50</td> <td>£44.52</td>	50	£44.52
390505THUN	Hook	6x50	6mm	50	£43.17
390565THUN	Eye	6x50	6mm	50	£69.96

Other sizes available on request.



Plaster Board Fixing - Self Tapping

Plasterboard Screws

- Self drilling anchor for plasterboard
- Anchors complete with screws
- Zinc alloy

Plaster Board Fixing - Self Tapping			
Reference	Material	Pack Qty	Price
430003201	Zinc Alloy	100	£10.30
APTLPL005	Nylon	100	£9.97



Chocbox

The patented Chocbox, the revolutionary new connector cover, is the safe and simple solution to protect and insulate electrical connections. The patented Chocbox is a low cost aesthetically pleasing connector cover, junction box or inline connector designed to meet the requirements of the I.E.E. regulations and the Health & Safety executive i.e. insulation of bare connectors.



Chocbox Specification	
Item	Chocbox Inline Connector / Junction Box
Description	A plastic box to insulate connector blocks Used as a junction box for fixed wiring Used as an inline connector when used with cord grips supplied
Dimensions	90mm x 50mm x 30mm
Materials	Polypropylene
Test Specifications	Partial test to appropriate Clauses of BS4533: section 102.1:1990/EN60 598-2-1:1989 in respect of cable restraint and flammability
Cable Restraint	The cable restraint clamping screws were tightened and loosened 5 times at 0.6n torque. No damage occurred impairing further use of the screws. Cable restraints without a pull-force 60N, applied 25 times
Flammable Material	The sample material was subjected to the 650 degree glow-wire test of Sub-clause 13.3.2 of BSEN60598-1 using the test apparatus and test procedure described in IEC 695-2-1:1990 (fire hazard testing for electrotechnical products) After testing, the sample was examined with respect to 650 degree glow-wire test covers, shades and similar parts not having an insulation function referred to in Clause 4.15 of BSEN60598-1
Patent IEE Regs	422-01-04 referring to 526-03-02

Capacities				
Connector Size	2 amp	5 amp	15 amp	30 amp
with cord grip	8 pole	6 Pole	4 Pole	3 Pole
without cord grip	10 pole	8 Pole	4 Pole	3 Pole

Chocbox				
Reference	L	W	D	Price
Chocbox	90mm	50mm	30mm	£1.00

Sigma terminals

Terminals made of self-extinguishing Polyamide-6. Black base, terminal made of MS-58 brass (DIN-17660), ring made of tempered, galvanised and bichromated steel and cap made of self-extinguishing orange polypropylene.

- Clipping proof. The connection is done through a tightening device that presses evenly all of the contact surface, avoiding frictions and strains that could damage the conductors.
 - Loosening proof. The ring that surrounds the brass body guarantees that the pressure exerted by the conductors will not open the terminal and loosen the connection.
 - Total insulation. All SIGMA "S" terminals are supplied with a cap, which avoids any accidental contacts with live parts.
- All sizes can be joined together. Nominal current: 500 V.



Sigma Modular Line Taps

Reference	Cross Section & Ampage	Amps	Pack Qty	Price
S04	4mm ² Cable	25A	20	£11.37
S06	6mm ² Cable	32A	20	£12.63
S10	10mm ² Cable	50A	20	£14.98
S16	16mm ² Cable	63A	20	£20.45
S25/35	25-35mm ² Cable	100A	20	£29.01
S50	50mm ² Cable	125A	20	£44.29
S70	70mm ² Cable	160A	20	£54.16
S95/100	95-100mm ² Cable	200A	20	£67.03

Line Taps

Manufactured from brass to BS2874 - CZ 121. Tinned overall, they conform to all major specifications throughout the world.

Principal Use

To provide quick, low cost service connections from copper overhead lines.

Reference	Cross Section	Pack Qty	Price
HD9	6-10mm ²	10	£14.74
HD10	10-16mm ²	10	£18.95
HD12A	25-35mm ²	10	£29.79
HD14	50-75mm ²	10	£57.63
HD15	95mm ²	10	£101.84



Residual Current Devices (RCD's)

The HellermannTyton range of residual current devices provides protection against potentially dangerous fault currents.

- Available in 2 pole, 2 module and 4 pole, 4 module versions
- High reliability and resistance to vibration
- Terminals protected against accidental contact
- Captive terminal screws
- Protected against nuisance tripping
- Conform to standards:
NF/USE - SEMKO - VDE - CEBC - NF EN 61 008
- Current ratings available 16, 25, 40, 63 and 80A
- Snap fitting to standard DIN rail for use in consumer units etc.

Tripping Current	Protection
10mA	Very high protection to personnel and against fire
30mA	High degree of protection to personnel and against fire
100mA	High degree of fire protection and limited degree of protection to personnel
300mA	High degree of fire protection only

2 Pole

Specification	
Rated Voltage	230V
Wiring Capacity	25mm ² stranded, 35mm ² solid
Colour	Grey

2 Pole RCD				
Reference	Current Rating A	Tripping Current mA	Pack Qty	Price
K0201	16	10	1	£58.33
K0202	25	30	1	£23.66
K0203	25	100	1	£29.14
K0204	25	300	1	£29.14
K0206	40	30	1	£23.66
K0207	40	100	1	£29.14
K0208	40	300	1	£44.63
K0310	63	30	1	£34.14
K0311	63	100	1	£36.77
K0312	63	300	1	£36.77
K0324	80	30	1	£34.84
K0325	80	100	1	£38.06
K0326	80	300	1	£38.06
K0404	100	30	1	£62.63



4 Pole

Specification	
Rated Voltage	400V
Wiring Capacity	25mm ² stranded, 35mm ² solid
Colour	Grey

4 Pole RCD				
Reference	Current Rating A	Tripping Current mA	Pack Qty	Price
K0314	25	30	1	£42.69
K0315	25	100	1	£40.48
K0316	25	300	1	£40.48
K0317	40	30	1	£42.69
K0318	40	100	1	£40.48
K0319	40	300	1	£40.48
K0320	63	30	1	£46.61
K0321	63	100	1	£42.04
K0322	63	300	1	£42.04
K0401	80	30	1	£84.14
K0402	80	100	1	£85.43
K0403	80	300	1	£91.67
K0405	100	30	1	£97.47



RCD enclosures see page 123

Miniature Circuit Breakers (MCB's)

Our comprehensive range of MCBs offer outstanding performance in accordance with BS EN 60898.

Single Pole - 6KA		
Reference	Description	Price
MCBS6-6	6KA, Single Pole, B type, 6A	£6.56
MCBS6-10	6KA, Single Pole, B type, 10A	£6.67
MCBS6-16	6KA, Single Pole, B type, 16A	£6.77
MCBS6-20	6KA, Single Pole, B type, 20A	£6.88
MCBS6-25	6KA, Single Pole, B type, 25A	£6.99
MCBS6-32	6KA, Single Pole, B type, 32A	£7.10
MCBS6-50	6KA, Single Pole, B type, 50A	£8.15
MCBS6-63	6KA, Single Pole, B type, 63A	£11.67



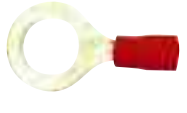











Single Pole - 10KA		
Reference	Description	Price
MCBS10-6	10KA, Single Pole, B type, 6A	£8.66
MCBS10-10	10KA, Single Pole, B type, 10A	£8.71
MCBS10-13	10KA, Single Pole, B type, 13A	£8.76
MCBS10-16	10KA, Single Pole, B type, 16A	£8.82
MCBS10-20	10KA, Single Pole, B type, 20A	£8.87
MCBS10-25	10KA, Single Pole, B type, 25A	£8.92
MCBS10-32	10KA, Single Pole, B type, 32A	£9.03
MCBS10-40	10KA, Single Pole, B type, 40A	£9.09
MCBS10-50	10KA, Single Pole, B type, 50A	£11.67
MCBS10-63	10KA, Single Pole, B type, 63A	£13.98



Three Pole - 10KA		
Reference	Description	Price
MCBT10-6	10KA, Triple Pole, B type, 6A	£40.86
MCBT10-10	10KA, Triple Pole, B type, 10A	£41.13
MCBT10-13	10KA, Triple Pole, B type, 13A	£41.18
MCBT10-16	10KA, Triple Pole, B type, 16A	£41.24
MCBT10-20	10KA, Triple Pole, B type, 20A	£41.29
MCBT10-32	10KA, Triple Pole, B type, 32A	£41.40
MCBT10-40	10KA, Triple Pole, B type, 40A	£41.51
MCBT10-50	10KA, Triple Pole, B type, 50A	£47.31
MCBT10-63	10KA, Triple Pole, B type, 63A	£47.53



A Comprehensive Range of Insulated Light Duty Terminals

Light Duty Terminals										
Type	mm	Red Pre-insulated Part No	Pack Qty	Price	Blue Pre-insulated Part No	Pack Qty	Price	Yellow Pre-insulated Part No	Pack Qty	Price
 Ring	3	HFP1.5-003	100	£2.35	HFP2.5-003	100	£2.56	-	-	-
	3.5	HFP1.5-003.5	100	£2.35	HFP2.5-003.5	100	£2.56	HFP4.0-003.5	100	£4.94
	4	HFP1.5-004	100	£2.96	HFP2.5-004	100	£3.06	HFP4.0-004	100	£4.94
	5	HFP1.5-005	100	£2.96	HFP2.5-005	100	£3.26	HFP4.0-005	100	£4.94
	6	HFP1.5-006	100	£2.93	HFP2.5-006	100	£3.58	HFP4.0-006	100	£5.21
	8	HFP1.5-008	100	£3.92	HFP2.5-008	100	£3.58	HFP4.0-008	100	£5.44
 Fork	3	HFP1.5-S3	100	£2.35	-	-	-	-	-	-
	3.5	HFP1.5-S3.5	100	£2.35	HFP2.5-S3.5	100	£2.56	HFP4.0-S3.5	100	£4.91
	4	HFP1.5-S4	100	£2.96	HFP2.5-S4	100	£3.06	-	-	-
	5	HFP1.5-S5	100	£2.48	HFP2.5-S5	100	£2.86	HFP4.0-S5	100	£5.04
	6	HFP1.5-S6	100	£2.33	HFP2.5-S6	100	£2.86	HFP4.0-S6	100	£5.21
	 Pin	Pin Length 12.0	HFP1.5-WP12	100	£2.73	HFP2.5-WP12	100	£3.26	HFP4.0-WP14	100
 Flat Blade	Blade Size 9.0 x 2.8	-	-	-	HFP2.5-FB9	100	£3.21	-	-	-
	10.0 x 2.8	-	-	-	-	-	-	-	-	-
	18.0 x 2.3	HFP1.5-FB18	100	£3.26	HFP2.5-FB18	100	£4.69	-	-	-
	10.0 x 2.3	HFP1.5-FB10	100	£2.52	-	-	-	-	-	-
 Hook Blade	Blade Width 3.0	HFP1.5-HB	100	£5.47	HFP2.5-HB	100	£5.47	-	-	-
 Butt	-	HFP1.5-BC	100	£2.93	HFP2.5-BC	100	£3.93	HFP4.0-BC	100	£5.97
 Female Push-On	To Fit Tab Size 2.8 x 0.5	HFP1.5-F110-5	100	£3.37	-	-	-	-	-	-
	2.8 x 0.8	HFP1.5-F110-8	100	£3.37	-	-	-	-	-	-
	4.7 x 0.5	HFP1.5-F187-5	100	£3.51	HFP2.5-F187-5	100	£3.71	-	-	-
	4.7 x 0.8	HFP1.5-F187-8	100	£3.51	HFP2.5-F187-8	100	£3.71	-	-	-
	6.3 x 0.8	HFP1.5-F250-8	100	£3.67	HFP2.5-F250-8	100	£5.82	HFP4.0-F250-8	100	£5.41
	9.5 x 1.0	-	-	-	-	-	-	HFP4.0-F375-8	100	£7.12
 Male Push-On	6.3 x 0.8	HFP1.5-M250-8	100	£3.51	HFP2.5-M250-8	100	£5.82	HFP4.0-M250-8	100	£5.20
 Female Fully Insulated	To Fit Tab Size 6.3 x 0.8	HFP1.5-FS250-8	100	£4.20	HFP2.5-FS250-8	100	£5.72	HFP4.0-FS250-8	100	£6.26
 Push On Adaptor	6.3 x 0.8	HFP1.5-MF250-8	100	£5.62	HFP2.5-MF250-8	100	£5.82	-	-	-
 Male Bullet Connector	4	HFP1.5-MB	100	£3.54	HFP2.5-MB	100	£3.92	-	-	-
 Female Bullet Connector	4	HFP1.5-FB	100	£4.09	HFP2.5-FB	100	£4.42	-	-	-

175 Piece Terminal Kits

- 0.5-6mm cable diameter
- Colour coded pre-insulated
- 18 compartment durable box
- Combined cut and crimper

Reference	Price
A918175T	£10.06



630 Piece Terminal Kit

- 0.5-6mm cable diameter
- Colour coded pre-insulated
- Quality steel carry box
- Cutting tool
- Ratchet crimper



Reference	Price
A801632T	£60.24



Pre-Insulated End Sleeve Terminals

A comprehensive range of pre-insulated end sleeve terminals available in both French and German standard colour codings.

Type	Reference	Cable Size	Colour	Pack Qty	Price
Pre-Insulated End Sleeve French Colour	CE005008	0.50mm x 8F	White	500	£5.31
	CE075008	0.75mm x 8F	Blue	500	£5.31
	CE010008	1.0mm x 8F	Red	500	£5.31
	CE015008	1.5mm x 8F	Black	500	£5.31
	CE025008	2.5mm x 8F	Grey	500	£5.31
	CE040010	4.0mm x 10F	Orange	500	£11.61
	CE060012	6.0mm x 12F	Green	100	£2.77
	CE100012	10mm x 12F	Brown	100	£3.15
	CE160012	16mm x 12F	Ivory	100	£4.37
	CE250016	25mm x 16F	Black	100	£7.68
	CE350016	35mm x 16F	Red	50	£5.20
	CE500020	50mm x 20F	Blue	50	£12.05
German Colour	CE005008W	0.50mm x 8G	Orange	500	£5.31
	CE075008W	0.75mm x 8G	White	500	£5.31
	CE010008W	1.0mm x 8G	Yellow	500	£5.31
	CE015008W	1.5mm x 8G	Red	500	£5.31
	CE25008W	2.5mm x 8G	Blue	500	£5.31
	CE040010W	4.0mm x 10G	Grey	500	£11.61
	CE060012W	6.0mm x 12G	Black	100	£2.77
	Sizes 10mm - 50mm in German Colour Codes available to special order.				

Pre-Insulated Twin End Sleeve Terminals

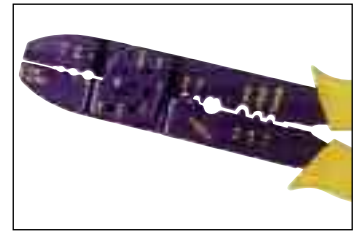
Type	Reference	Cable Size	Colour	Pin Length	Pack Qty	Price
Pre-Insulated Twin End Sleeve	CT205008	2 x 0.5	White	8mm	1000	£13.98
	CT207508	2 x 0.75	Grey	8mm	1000	£13.98
	CT207510	2 x 0.75	Grey	10mm	1000	£13.98
	CT210008	2 x 1.0	Red	8mm	1000	£13.98
	CT210010	2 x 1.0	Red	10mm	1000	£13.98
	CT215008	2 x 1.5	Black	8mm	1000	£14.71
	CT215010	2 x 1.5	Black	10mm	1000	£14.71
	CT225010	2 x 2.5	Blue	10mm	1000	£18.68
	CT225013	2 x 2.5	Blue	10mm	1000	£18.68
	CT240012	2 x 4.0	Grey	12mm	1000	£54.16
	CT260014	2 x 6.0	Yellow	14mm	1000	£64.22

Crimp Tools

6012 - Cut & Strip Crimping

- Size - 9", 222mm
- Crimp range - 1.0 - 6.0mm

Cut & Strip Crimping			
Reference	Crimp Type	Crimp Range	Price Each
6012	Pre Insulated L/Duty	1.0 - 6.0mm	£1.38



7700 - Ratchet

- Size - 8³/₈", 220mm
- Crimp range - 0.5 - 6.0mm

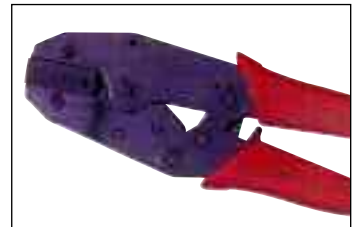
Ratchet			
Reference	Crimp Type	Crimp Range	Price Each
7700	Pre Insulated L/Duty	0.5 - 6.0mm	£10.95



7702 - Ratchet

- Size - 8³/₈", 220mm
- Crimp range - 0.5 - 4.0mm

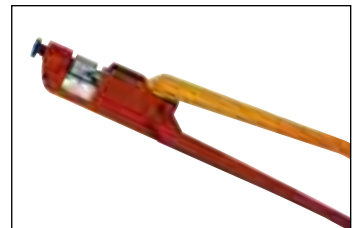
Ratchet			
Reference	Crimp Type	Crimp Range	Price Each
7702	Pre Insulated End Sleeve	0.5 - 4.0mm	£18.24



6095 - Heavy Duty Crimp Tool

- Size - 22¹/₂", 570mm
- Crimp range - 10 - 95mm
- Weight - 3.1kgs

Heavy Duty Crimp Tool			
Reference	Crimp Type	Crimp Range	Price Each
6095	H/Duty Copper Tube	10 - 95mm	£55.87



60150 - Heavy Duty Crimp Tool

- Size - 29", 670mm
- Crimp range - 10 - 150mm
- Weight - 4.0kgs

Heavy Duty Crimp Tool			
Reference	Crimp Type	Crimp Range	Price Each
60150	H/Duty Copper Tube	10 - 150mm	£100.08



N143 - Pre Insulated End Sleeve Crimp Tool

- 0.25 to 2.5mm
- 0.5 to 16mm

Pre Insulated End Sleeve Crimp Tool			
Reference	Crimp Type	Crimp Range	Price Each
N143-62-160	Pre Insulated End Sleeve	0.25-2.5mm	£13.63
N143-62-190	Pre Insulated End Sleeve	0.5-16mm	£14.68

