

16

1614 24

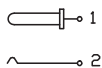
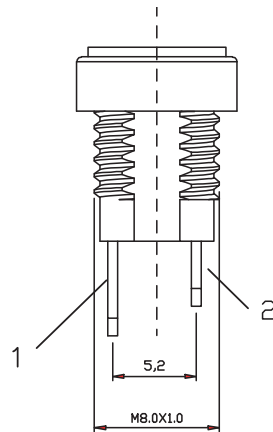
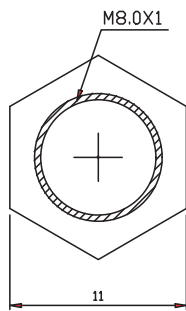
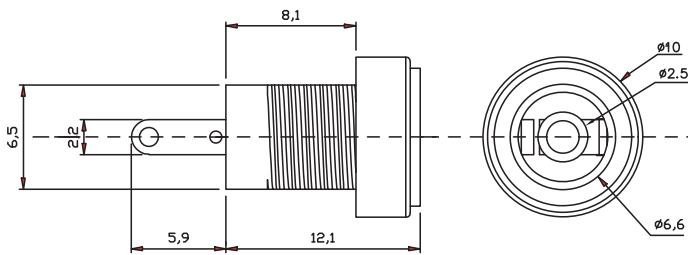
Power supply connectors



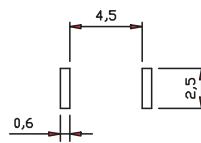
Power supply chassis socket, straight version, with solder eyes, for printed circuit boards, for front side mounting

16

1614 24



*a



*a printed circuit board layout

Environmental conditions

Temperature range -30 °C/+70 °C

Materials

Insulating body PA, V-0 according to UL94
Contact spring CuZn, nickel-plated
Contact pin CuZn, nickel-plated
Hexagonal nut CuZn, nickel-plated

Mechanical data

Diameter opening 6.6 mm
Diameter center pin 2.5 mm
Mating cycles 5000¹
Insertion force 3–30 N
Withdrawal force 3–30 N

¹ gemessen mit einem Lehrenstecker

Electrical data (at T_{amb} 20 °C)

Contact resistance ≤ 30 mΩ
Rated current 2 A
Rated voltage 30 V
Rated impulse voltage 500 V/60 s
Insulation resistance ≥ 100 MΩ

Associated products

Counterparts
 ☞ 1633 04 ☞ 1634 02 ☞ NES/J 25
 ☞ NES/J 250 ☞ XNES/J 250

16

1614 24

Designation	Pole Number	PU (Pieces)	MDQ (Pieces)
1614 24	2	300	900

Packaging:

in bulk, in a cardboard box or a plastic bag