

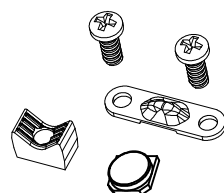
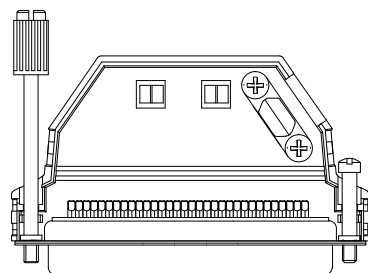
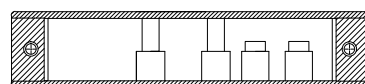
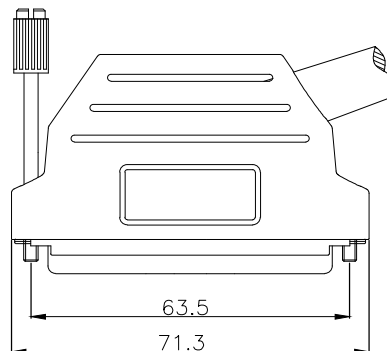
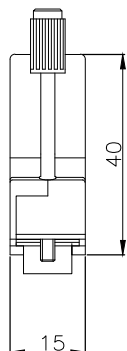
THIS IS A C.A.D. GENERATED DRAWING  
DO NOT MAKE MANUAL REVISIONS TO MASTER.

# BACKSHELL KIT INCLUDES:

- (2)BACKSHELL HALVES
- (2)4-40 THUMBSCREWS
- (1)MATING SCREW (FULL METAL)
- (2)CLAMP SCREWS
- (1)METAL CLAMP
- (1)PLASTIC CLAMP
- (1)BLANKING PLUG



\* UNLESS OTHERWISE SPECIFIED TOLERANCES  
ON DECIMAL IS: ANGLE  $\pm 1^\circ$   
UNIT: MM .XX  $\pm 0.35$



BACKSHELL MATERIAL: ABS,UL RECOGNIZED BLACK  
JACKSCREWS: STEEL:ZN PLATED WITH PLASTIC KNOB  
MATING SCREW: STEEL:ZN PLATED  
BLANKING PLUG: ABS,UL RECOGNIZED  
CLAMP SCREW: STEEL:ZN PLATED  
METAL CLAMP: STEEL:ZN PLATED  
PLASTIC CLAMP: ABS,UL RECOGNIZED  
OPERATING TEMP: -55°C TO+110°C

DIMENSIONS(mm/in)				
SIZE	A $\pm_{.50}^{+.80}(+.032)$	B $\pm_{.50}^{+.80}(+.032)$	C $\pm_{.50}^{+.80}(+.032)$	D $\pm_{.02}^{+.50}$
37	71.3	40.0	15.00	63.50
	2.807	1.575	0.591	2.500

## ORDERING INFORMATON:

SIZE	P/N - KITTED	PRODUCT CODE
37-WAY	6260-0107-14	MHDSSK-P-37-S-K

SIZE	P/N - BULK	PRODUCT CODE
37-WAY	6261-0107-14	MHDSSK-P-37-S

THESE DRAWINGS AND SPECIFICATIONS ARE THE  
PROPERTY OF MH CONNECTORS LTD. AND SHALL NOT  
BE REPRODUCED, COPIED OR USED AS THE BASIS FOR  
THE MANUFACTURE OR SALE OF APPARATUS WITHOUT  
WRITTEN PERMISSION.

DRAWN Johnny		DATE 11-06-15
APPROVED VICTOR		DATE 11-06-15
SCALE	SHEET OF 1 OF 1	REV: 2.0
DRAWING No MHDSSK-P-37-S		



THIS SERIES FULLY CONFORMS TO THE  
EUROPEAN UNION DIRECTIVES 2002/95/EC  
AND 2002/96/EC FOR RoHS COMPLIANCY.



MH CONNECTORS LTD.