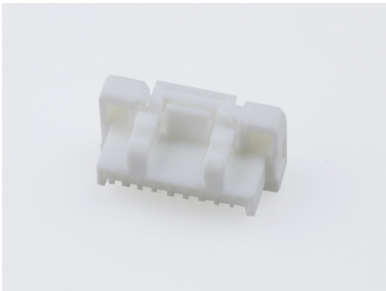




**Part Number :** [5023800900](#)  
**Product Description :** CLIK-Mate Plug Housing,  
1.25mm Pitch, Single Row, Positive Lock, 9  
Circuits, White  
**Series Number :** 502380  
**Status :** Active  
**Product Category :** Connector Housings



## Documents & Resources

### Drawings

[Drawing 5023800900\\_sd.pdf](#)  
[Packaging Design Drawing SPK-502380-001-001.pdf](#)  
[Packaging Design Drawing SPK-502380-001-002.pdf](#)

### 3D Models and Design Files


[3D Model 5023800900\\_stp.zip](#)

### Specifications

[Application Specification AS-502380-001-001.pdf](#)  
[Application Specification AS-502380-002-001.pdf](#)  
[Product Specification PS-502382-001-001.pdf](#)  
[Product Specification PS-502382-002-001.pdf](#)

## Product Environment Compliance

### Compliance

GADSL/IMDS	Not Relevant
China RoHS	
EU ELV	Not Relevant
Low-Halogen Status	Not Low-Halogen per IEC 61249-2-21
REACH SVHC	Not Contained per D(2023)3788-DC (14 Jun 2023)
EU RoHS	Compliant per EU 2015/863

### Multiple Part Product Compliance Statements

- Eu RoHS
- REACH SVHC
- Low-Halogen

## Multiple Part Industry Compliance Documents

- IPC 1752A Class C
- IPC 1752A Class D
- Molex Product Compliance Declaration
- IEC-62474
- chemSHERPA (xml)

## EU RoHS Certificate of Compliance

---

### Part Details

#### General

Status	Active
Category	Connector Housings
Series	502380
Description	CLIK-Mate Plug Housing, 1.25mm Pitch, Single Row, Positive Lock, 9 Circuits, White
Application	Signal, Wire-to-Board
Product Family	CLIK-Mate Wire-to-Board Connectors
Product Name	CLIK-Mate
UPC	822350895118

#### Electrical

Current - Maximum per Contact	1.0A
-------------------------------	------

#### Physical

Breakaway	No
Circuits (maximum)	9
Color - Resin	White
Gender	Plug
Glow-Wire Capable	No
Keying to Mating Part	Yes
Lock to Mating Part	Yes
Material - Resin	Polyester
Net Weight	237.000/mg
Number of Rows	1
Packaging Type	Bag

Panel Mount	No
Pitch - Mating Interface	1.25mm
Polarized to Mating Part	Yes
Stackable	No
Temperature Range - Operating	-40° to +105°C

---

## Mates With / Use With

### Mates with Part(s)

Description	Part Number
1.25mm Pitch CLIK-Mate Vertical Single Row PCB Receptacles	<u>502382</u>
1.25mm Pitch CLIK-Mate Right-Angle Single Row PCB Receptacles	<u>502386</u>

### Use with Part(s)

Description	Part Number
Pre-Crimped Lead CLIK-Mate 1.25mm Male-to-CLIK-Mate 1.25mm Male, Tin (Sn) Plating, 150.00mm Length, 28 AWG, Black	<a href="/content/molex/molex-dot-com/us/en/products/product-page.html/797581012.html">/content/molex/molex-dot-com/us/en/products/product-page.html/797581012.html</a>
Pre-Crimped Lead CLIK-Mate 1.25mm Male-to-CLIK-Mate 1.25mm Male, Tin (Sn) Plating, 300.00mm Length, 28 AWG, Black	<a href="/content/molex/molex-dot-com/us/en/products/product-page.html/797581013.html">/content/molex/molex-dot-com/us/en/products/product-page.html/797581013.html</a>
CLIK-Mate and IllumiMate 1.25mm Pitch Male Crimp Terminals	<u>502381</u>