

**Push Pull Power male 0° spring-cage connection**

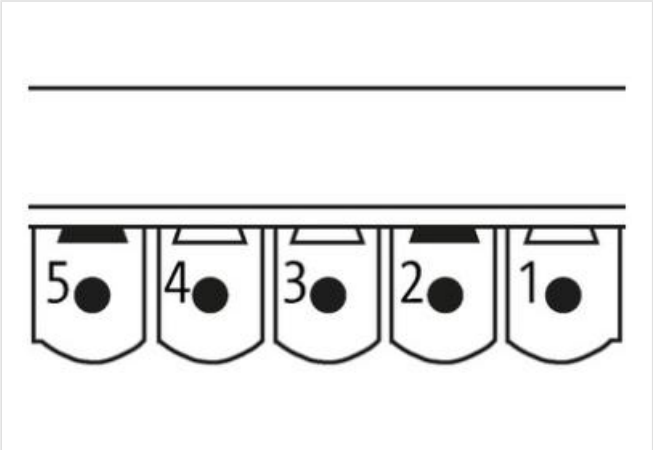
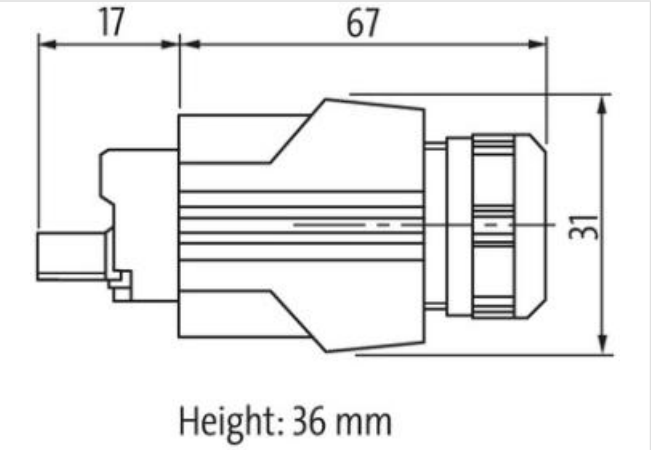
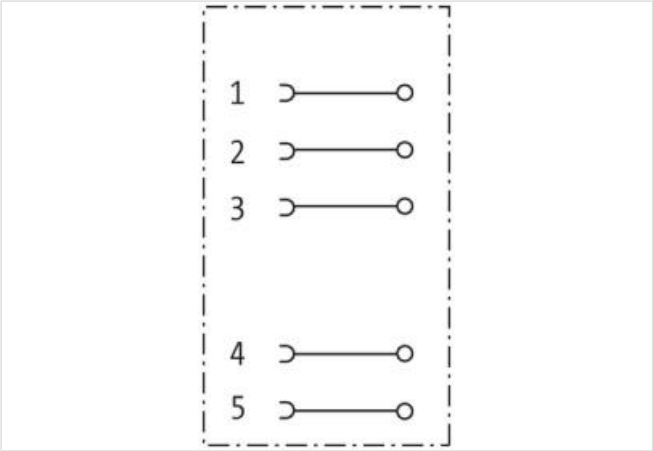
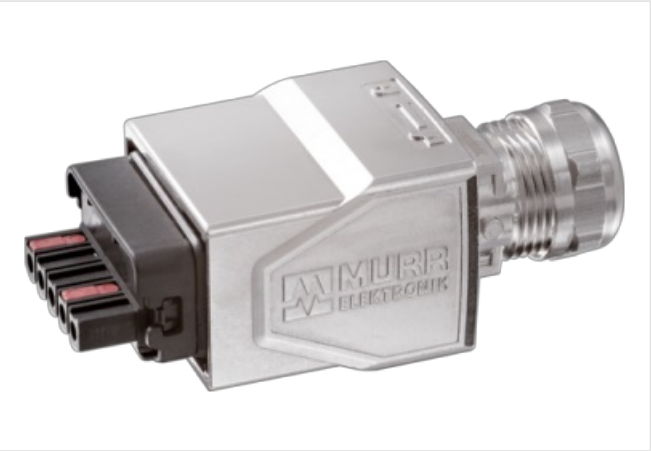
5-pol., 0,75 - 2,5mm², 9 - 13mm

Male straight  
PPP, 5-pole  
Spring clamp terminals  
Connection cross section: 0.75...2.5 mm²  
Push Pull Power

The resistance to aggressive media should be individually tested for your application. Further details on request.

**Link to Product**

**Illustration**



Product may differ from Image



Commercial data	
ECLASS-6.0	27279221
ECLASS-7.0	27440104
ECLASS-8.0	27440104
ECLASS-9.0	27440102

ECLASS-10.1	27440101
ECLASS-11.1	27440101
ECLASS-12.0	27440114
ETIM-5.0	EC002635
customs tariff number	85366990
GTIN	4048879113915
Packaging unit	1

#### Electrical data | Supply

Operating voltage AC max.	24 V
Operating voltage DC max.	24 V
Current operating per contact max.	16 A

#### Installation

Connection cross section min.	0,75 mm <sup>2</sup>
Connection cross section max.	2,5 mm <sup>2</sup>
AWG number min.	18
AWG number max.	14

#### Device protection | Electrical

Degree of protection (EN IEC 60529)	IP65, IP67
Additional condition protection degree	inserted, screwed
Pollution Degree	2
Rated surge voltage	4 kV

#### Mechanical data | Material data

Coating housing	Nickeled
Material housing	Zinc die-casting

#### Mechanical data | Mounting data

Clamping range min.	9 mm
Clamping range max.	13 mm

#### Environmental characteristics | Climatic

Operating temperature min.	-40 °C
Operating temperature max.	70 °C

#### Important installation notes

Note on strain relief	Protect the connectors by suitable measures from mechanical loads, e.g. by the usage of cable ties.
Note on bending radius	<b>Attention:</b> Observe the permissible bending radii when laying cables, as the IP protection class can be endangered by excessive bending forces.