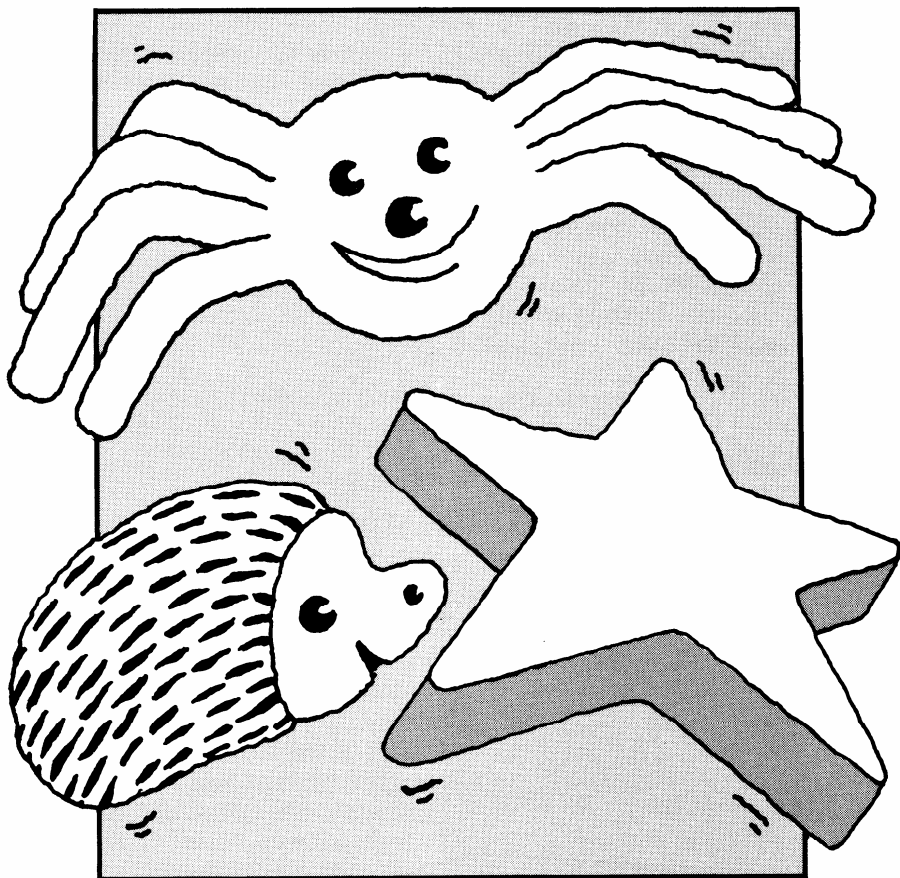


NEWCLAY

INSTRUCTION LEAFLET



Create lots of different shapes and models with this nylon reinforced modelling clay which hardens when left to dry.

Modelling with Newclay

Newclay is an off-white clay, which because it is nylon re-inforced, is not brittle. The clay makes strong models even those made by small children. However, for older children and adults, there is a hardener available which when applied to the clay will increase the strength still further.

Instructions for Use

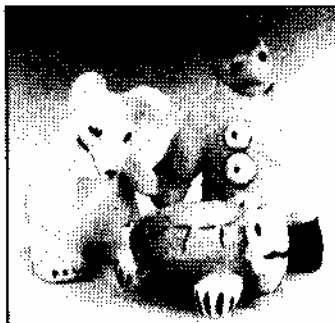
Always keep the clay in a closed container (eg the original packaging is ideal).

If the clay dries out, break into small pieces, put into a small polythene bag and sprinkle water on them,
–leave until soft and workable again.

As with all creative activities, we suggest children wear overalls or old clothes, and that you cover soft furnishings and play surfaces.

Solid Chunky Models

For these, it is not necessary to treat Newclay with hardener because the clay alone will be strong enough.



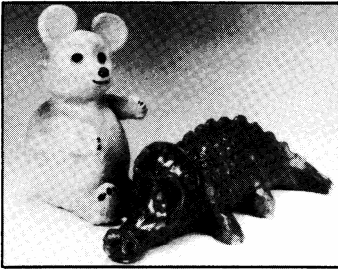
Rabbit, Tortoise and Man, painted when dry.

To start – roll a ball of clay, this can be a head, or a body of an animal, using the end of your finger, you can poke eyes into it, or create other features. Add materials to it, a piece of wood, or seeds. You can paint your finished model, add wool for hair, the combinations are endless.

Larger Models

If you want to make large models, it is unnecessary to make these entirely out of clay, as they might use up too much of your clay and be too heavy. The greater part of the model can be slightly damp paper, screwed up into the required shape and covered with a layer of clay. Then the modelling can be started on the outside of the bulk shape.

As your work progresses, it may begin to dry a little, so it may be advisable to dampen the surface a little with a sponge.

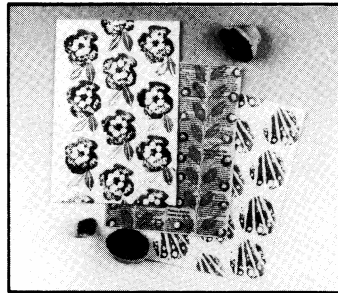


Teddy and Fun Monster – both filled with paper, and painted when dry.

As each extra piece is added to your model, smear the joint together. Should a piece fall off your model after drying, it can be glued back into place, or you can even add fresh clay on to the dry clay surface.

Printing

Newclay lends itself very well to printing. You can either cut your pattern out of a chunk of clay (like potato printing) or press blocks against a rugged surface to create a textured print. Use clay that has other materials sunk into it, to create even more unusual patterns.



Creating patterns using the Printing block.

Making Pots

Newclay is not designed to hold water, so is not good for making pots, cups or beakers.

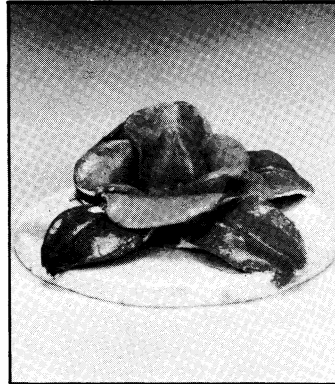
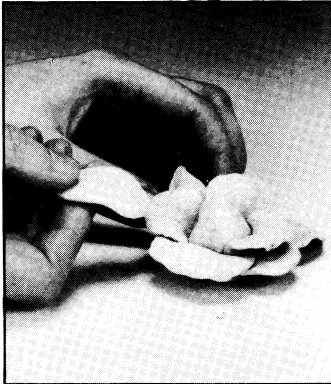
If you model the clay around a glass or polythene container however, then you can make these items very successfully. Wrap or coil the clay around the jar which has been covered with a layer of corrugated paper (the corrugated paper will hold the clay very well.)



Flower vase. – around a glass jar, and decorated when dry.

Modelling in Relief

Newclay can be made in very small or large items and unlike most other clays can be glued (using P.V.A. glue) to cardboard tubes, boxes or hardboard. Many patterned objects can be made in this way, for example pictures and decorated boxes.

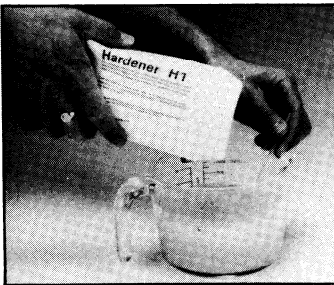


Rose applied to a box-lid, and painted when dry.

Hardener H1

To be used by adults/older children or under adult supervision.

The Hardener is a green powder which must be whisked into **VERY HOT WATER** (so great care must be taken, do not attempt this without adult supervision) at the rate of 2 ozs of powder to a pint of water. The powder will dissolve quite quickly, and the solution must then be left to cool. If you put the solution into a resealable airtight jar, you will be able to use the mixture indefinitely. Apply the solution only when your model is completely dry, two or three washes with a brush will be sufficient. Remember to wash your brush after use.



Mixing the Hardener.

Your model can be hardened still further if a treated piece is placed in a cold oven and warmed to a maximum temperature of 200°C (400°F). Once this temperature has been reached, you should remove your model from the oven. (Again, only with adult supervision).

Finishing Models

You can use any form of paint on Newclay, experiment with small pieces however, before you commit yourself on your finished model.

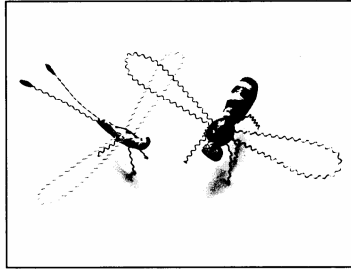
A great many substances can stick to the surface of the clay using Newclay gloss as an adhesive. Try earth, seeds, and glitter, and overpaint your 'finish' to create a tough transparent and binding layer.



Painting the model using Newclay gloss.

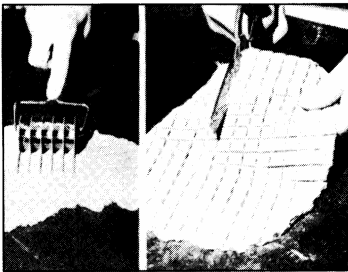
Newclay Modelling Wire

Newclay Modelling Wire is fashioned for easy bending, for firm holding by the clay and it is unusually interesting to look at.



Modelling with Wire

Mosaic Making



Cutting with 'Tessera Cutter'.

A very unusual and delightful way of making mosaics. The clay is rolled out thin with a rolling pin and cut with the 'Tessera Cutter'. The dry and coloured pieces are cut off with scissors.

Newclay Hardener 2

Newclay Hardener 2 is mixed into the clay just prior to use. The whole mass of the clay hardens. This process is more suited to experienced modellers.

Newclay and the Kiln

Newclay fires well in the range of 1000°C to 1250°C. Many glazes give acceptable results.