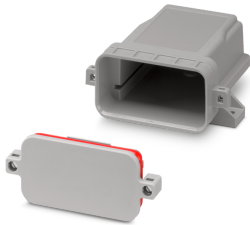


Electronic housing - ECS - KIT - 64X80-S-UV-7042 - 1319373


Please be informed that the data shown in this PDF Document is generated from our Online Catalog. Please find the complete data in the user's documentation. Our General Terms of Use for Downloads are valid (<http://phoenixcontact.com/download>)



Empty enclosure for wall or mast mounting, gray (7042), modular electronics housing with front plate, for outdoor applications, degree of protection: IP66/IP67/IP69, width: 97 mm, height: 87 mm, depth: 42 mm, PCB surface: 4100 mm²



Key Commercial Data

Packing unit	1 pc
GTIN	 4 063151 604424
GTIN	4063151604424
Custom tariff number	84879090

Technical data

Item properties

Type	ECS - KIT - 64X80-S-UV-7042
Item no.	1319373
Housing type	outdoor housings
Type	Screw locking
Max. NEMA code to attain	6
IK code	IK08
Mounting type	Wall or panel mount. Pole mount with accessory.
Type of locking	screw locking

Measurements

Caption	Schematic figure for illustrating the item dimensions. The figure is not of the desired product. For further details, refer to the product drawings in the "Downloads" tab.
Width [w]	97.8 mm
Height [h]	89.4 mm
Depth [d]	45.1 mm

Material specifications

Electronic housing - ECS - KIT - 64X80-S-UV-7042 - 1319373

Technical data

Material specifications

Housing material	PC (polycarbonate)
Color (RAL)	gray (7042)
Flammability rating according to UL 94	V0

Ambient conditions

Ambient temperature (storage/transport)	-40 °C ... 100 °C
Ambient temperature (operation)	-40 °C ... 100 °C

PCB data

Total PCB surface	4100 mm ²
Type of PCB mount	Bolt mounting

General information

Note	Please observe the assembly instructions available in the download area.
------	--------------------------------------------------------------------------

Packaging information

Type of packaging	packed in cardboard
Pieces per package	1
Denomination packing units	Pcs.
Outer packaging type	Carton

Standards and regulations

Flammability rating according to UL 94	V0
----------------------------------------	----

Drawings

Dimensional drawing



Schematic figure for illustrating the item dimensions. The figure is not of the desired product. For further details, refer to the product drawings in the "Downloads" tab.

Classifications

eCl@ss

eCl@ss 11.0	27182702
-------------	----------