

# Holder - EV-T2AC-PARK - 1624148

Please be informed that the data shown in this PDF Document is generated from our Online Catalog. Please find the complete data in the user's documentation. Our General Terms of Use for Downloads are valid (<http://download.phoenixcontact.com>)



Retainer for Vehicle Connector as parking position at charging stations (EVSE), Type 2, IEC 62196-2

## Article description

Retainer for Vehicle Connector as parking position at charging stations for E-Mobility (EVSE)

## Your advantages

- Production in accordance with ISO TS 16949
- Material data available in the IMDS (International Material Data System of the automotive industry)

## Key commercial data

package_quantity	1
GTIN	4055626242828

## Technical data

### Product definition

Product type	Retainer for Vehicle Connector as parking position at charging stations (EVSE)
Standards/regulations	IEC 62196-2
Charging standard	Type 2
Charging mode	Mode 3
Type of charging current	AC

### Dimensions

Height	75 mm
Width	75 mm
Depth	44.7 mm
Bore dimensions	60 mm x 60 mm

### Ambient conditions

Ambient temperature (operation)	-30 °C ... 50 °C
Ambient temperature (storage/transport)	-40 °C ... 80 °C
Degree of protection	IP54

### Mechanical properties

Vehicle Connector fixing	With locking clips for locking contour
Removal of the Vehicle Connector	Lifting and removal

# Holder - EV-T2AC-PARK - 1624148

## Technical data

### Mechanical properties

Detection of the Vehicle Connector	On request
------------------------------------	------------

### Mounting

Possible mounting positions	Front mounting
Restrictions to mounting position	Only 0 to 45 degree frontal inclination possible, see figure
Mounting hole diameter	6.00 mm (ø)

### Design

Housing color	black
Customer variations	On request

### Material

Material	Plastic
----------	---------

### Environmental Product Compliance

China RoHS	Environmentally friendly use period: unlimited = EFUP-e
China RoHS	No hazardous substances above threshold values

## Classifications

### eCl@ss

eCl@ss 4.0	272607xx
eCl@ss 4.1	27260701
eCl@ss 5.0	27260701
eCl@ss 5.1	27059110
eCl@ss 6.0	27279220
eCl@ss 7.0	27061801
eCl@ss 8.0	27449001
eCl@ss 9.0	27144792

### ETIM

ETIM 2.0	EC000241
ETIM 3.0	EC002061
ETIM 4.0	EC002061
ETIM 5.0	EC002839
ETIM 6.0	EC002839

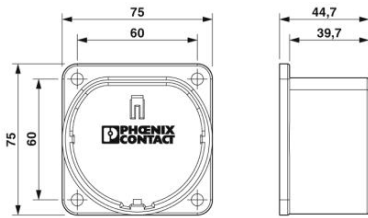
### UNSPSC

UNSPSC 6.01	30211923
UNSPSC 7.0901	39121522
UNSPSC 11	39121522
UNSPSC 12.01	39121522
UNSPSC 13.2	39121522

## Drawings

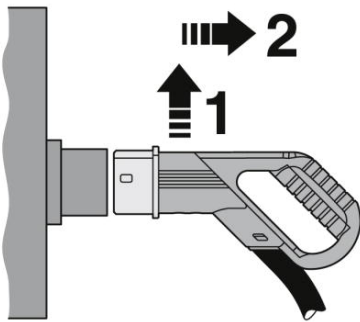
## Holder - EV-T2AC-PARK - 1624148

Dimensional drawing



Dimensional drawing

Schematic diagram



The attached AC Vehicle Connector is raised in the holder, releasing it from the integrated locking clip, and it can then be removed.

Phoenix Contact 2016 © - all rights reserved  
<http://www.phoenixcontact.com>