


RAFIX 16, pushbutton, flat bezel, round collar, bezel white






fields of application

- > Measurement-control-regulation
- > Electrical engineering
- > Mechanical and system engineering
- > Industrial robots

special features

- > Opaque bezels, not illuminable
- > Robust - also suitable for operation with gloves
- > Degree of protection: IP 65 at the front
- > Mounting diameter 16.2 mm
- > Separate switching elements required
- > Close mounting of actuators possible due to axial wiring from behind
- > Switching elements with silver contacts (max. 250 V / 6 A) or gold contacts (max. 35 V / 0.25 A)
- > Connection types switching elements: screw connection, plug connection, PCB plug-in socket



description

RAFIX control devices are modular units consisting of several parts. In the RAFIX 16 family, they always consist of an actuating element and a switching element, or of an indicator lamp and a lamp socket. Actuating elements (such as pushbuttons or emergency stop actuators) have the specified tactility, reset and function only when assembled with the appropriate switching elements. For illuminated actuators, please use switching elements with lamp socket.

With RAFIX 16 actuators, you can choose between three collar shapes: round, square or square side-by-side, where the pushbuttons can be lined up seamlessly. The mounting diameter is 16.2 mm according to the standard. The anti-rotation lug can be easily removed with a screwdriver if necessary.

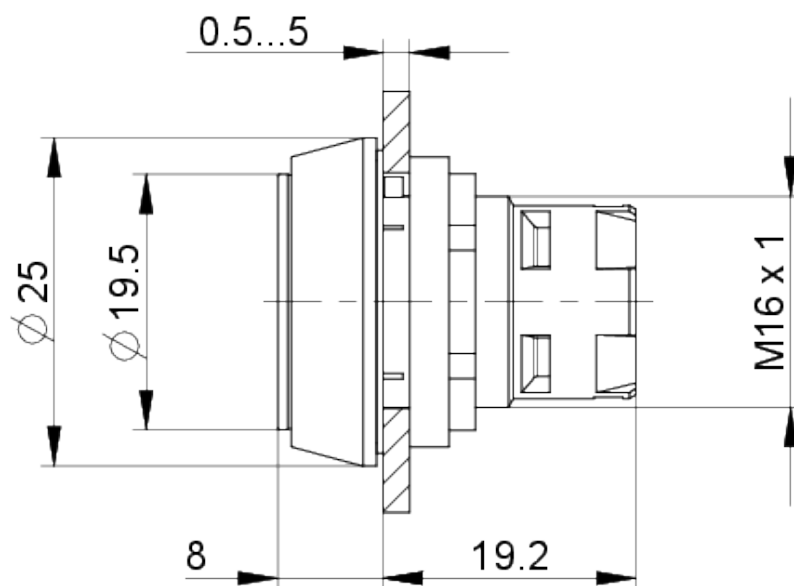
technical data

| > general | | direct links |
|------------------------------|---------|-----------------|
| Bezel color | white | > RAFI eCatalog |
| Property of bezel / mushroom | opaque | |
| Collar shape | round | |
| Operating temperature, min. | -25 °C | |
| Operating temperature, max. | 70 °C | |
| Storage temperature, min. | -40 °C | |
| Storage temperature, max. | 85 °C | |
| illuminated | No | |
| Packaging | Box | |
| Packaging unit | 10 pcs. | |
| net weight | 5.4 g | |

| | |
|--|--|
| Operating life | 2,000,000 cycles |
| B10 | 2,600,000 cycles |
| Degree of protection, front side, according to DIN EN 60529 | IP65 |
| Environment resistance | IEC 60068-2-14 IEC 60068-2-30 IEC 60068-2-33 IEC 60068-2-78 |
| MOQ order | 50 pcs. |
| RoHS compliant | Yes |
| REACH compliant | Yes |
| > mounting diameters | |
| Outside dimension, length | 24.95 mm |
| Outside dimension, width | 24.95 mm |
| Outside dimension, height | 26.35 mm |
| Mounting hole | 16.2 mm |
| Mounting depth | 44.7 mm |
| Installation height | 7.15 mm |
| Grid, min. | 25 x 25 mm |
| Collar dimension | ø 24,95 mm |
| > mechanical data | |
| Operating force, max. | 100 N |
| Operating travel, max. | 3 mm |
| Fixing | Threaded ring |
| Threaded ring torque, max. | 1.2 Nm |

drawings

Dimensioned drawing



Mounting hole drawing

