



Connectors > Automotive Connectors > Connector Housings > TIMER, CONNECTOR HOUSING



Connector & Housing Type: **Housing for Female Terminals**

Mating Tab Width: **2.8 mm [.11 in]**

Connector System: **Wire-to-Board, Wire-to-Device**

Number of Positions: **2**

Centerline (Pitch): **6.1 mm [.24 in]**

[All TIMER, CONNECTOR HOUSING \(538\)](#)

Features

Product Type Features

Connector & Housing Type	Housing for Female Terminals
Connector System	Wire-to-Board, Wire-to-Device
Sealable	Yes
Hybrid Connector	No
Primary Locking Feature	On the Terminal

Configuration Features

Number of Positions	2
Number of Rows	1

Electrical Characteristics

Operating Voltage	12 VDC
Nominal Voltage Architecture	12 V

Body Features

Cable Exit Angle	180°
Body Material	PBT GF
Primary Product Color	Black
Connector Code	A



Contact Features

Mating Tab Width	2.8 mm[.11 in]
------------------	----------------

Mechanical Attachment

Mounting Feature	Without
Terminal Position Assurance	Yes
Strain Relief	No
Mating Alignment Type	Polarized

Housing Features

Centerline (Pitch)	6.1 mm[.24 in]
--------------------	----------------

Dimensions

Product Width	31 mm[1.22 in]
Product Length	20.2 mm[.795 in]
Product Height	10.3 mm[.406 in]

Usage Conditions

Operating Temperature (Max)	70 °C, 75 °C, 80 °C, 85 °C, 90 °C, 100 °C, 105 °C, 110 °C, 120 °C, 125 °C, 130 °C[158 °F][167 °F][176 °F][185 °F][194 °F][212 °F][221 °F][230 °F][248 °F][257 °F][266 °F]
Operating Temperature Range	-40 – 130 °C[-40 – 266 °F]

Operation/Application

Circuit Application	Signal
---------------------	--------

Industry Standards

UL Flammability Rating	UL 94HB
------------------------	---------

Packaging Features

Packaging Method	Bag
------------------	-----

Other

Serviceable	No
Connector Position Assurance Capable	No

Product Compliance

For compliance documentation, visit the product page on TE.com>

EU RoHS Directive 2011/65/EU	Compliant
EU ELV Directive 2000/53/EC	Compliant



China RoHS 2 Directive MIIT Order No 32, 2016	No Restricted Materials Above Threshold
EU REACH Regulation (EC) No. 1907/2006	Current ECHA Candidate List: JAN 2021 (211) Candidate List Declared Against: JAN 2021 (211) Does not contain REACH SVHC
Halogen Content	Low Halogen - Br, Cl, F, I < 900 ppm per homogenous material. Also BFR/CFR/PVC Free
Solder Process Capability	Not applicable for solder process capability

Product Compliance Disclaimer

This information is provided based on reasonable inquiry of our suppliers and represents our current actual knowledge based on the information they provided. This information is subject to change. The part numbers that TE has identified as EU RoHS compliant have a maximum concentration of 0.1% by weight in homogenous materials for lead, hexavalent chromium, mercury, PBB, PBDE, DBP, BBP, DEHP, DIBP, and 0.01% for cadmium, or qualify for an exemption to these limits as defined in the Annexes of Directive 2011/65/EU (RoHS2). Finished electrical and electronic equipment products will be CE marked as required by Directive 2011/65/EU. Components may not be CE marked. Additionally, the part numbers that TE has identified as EU ELV compliant have a maximum concentration of 0.1% by weight in homogenous materials for lead, hexavalent chromium, and mercury, and 0.01% for cadmium, or qualify for an exemption to these limits as defined in the Annexes of Directive 2000/53/EC (ELV). Regarding the REACH Regulation, the information TE provides on SVHC in articles for this part number is based on the latest European Chemicals Agency (ECHA) ‘Guidance on requirements for substances in articles’ posted at this URL: <https://echa.europa.eu/guidance-documents/guidance-on-reach>

Compatible Parts



TE Part # CAT-T4827-T273
TIMER, RECEPTACLE AND TAB




TE Part # 1-929937-1
JPT REC 2.8 Contact SWS Au


Also in the Series | Junior Power Timer



Automotive Connector Caps & Covers
(5)



Automotive Headers(1)



Automotive Housings(223)



Automotive Seals & Cavity Plugs(10)



Automotive Terminals(81)



Busbars & Terminals(1)



Insertion & Extraction Tools(9)

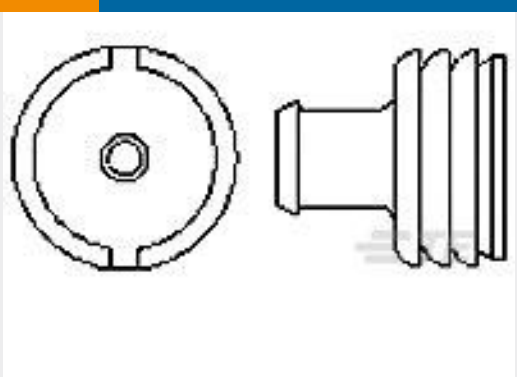


Module Components(8)



Other Automotive Connector
Accessories(1)

Customers Also Bought



TE Part #967652-1
PQ BLINDSTOPFEN 8,5



TE Part #174057-2
MULTILOCK, CONNECTOR HOUSING



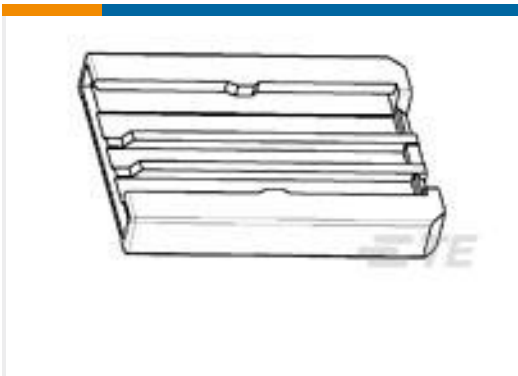
TE Part #1-967588-1
AMP MCP, RECEPTACLE AND TAB



TE Part #1379101-1
COV+LEV MQS 18W 90DEG BLK



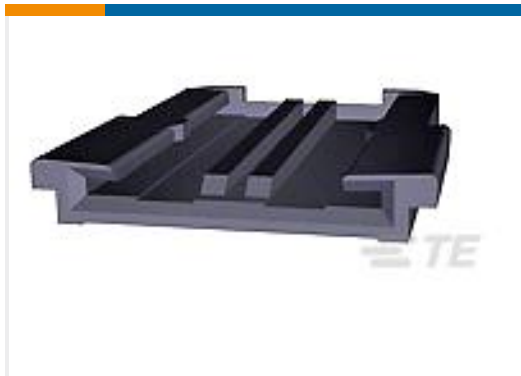
TE Part #1-968050-1
SPECIAL TERMINAL 11-10 AWG PTPB



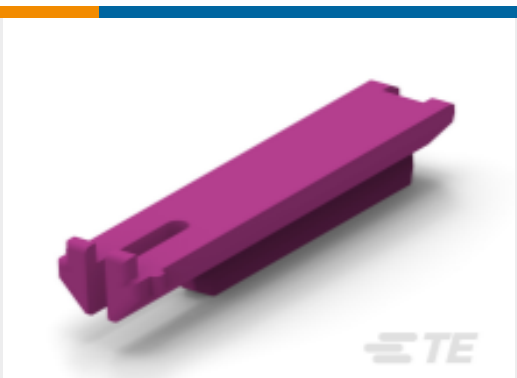
TE Part #1420001-1
MQS VERSCHL.PLATTE



TE Part #1379095-3
COV+LEV MQS 12W 0DEG BLAC



TE Part #1393449-1
V23540A1000Y452=VERSCHL.26P.



TE Part #1-1355034-1
JPT KONTSICHERUNG8P



TE Part #1473793-1
TH/.025 CONNECTOR SYSTEM,
HOUSING

Documents



Product Drawings

JPT EDS BUGH,ASSY2P

English

CAD Files

Customer View Model

ENG_CVM_1-1355668-2_B1.3d_igs.zip

English

Customer View Model

ENG_CVM_1-1355668-2_B1.3d_stp.zip

English

Customer View Model

ENG_CVM_1-1355668-2_B1.2d_dxf.zip

English

3D PDF

English

By downloading the CAD file I accept and agree to the [Terms and Conditions](#) of use.

Datasheets & Catalog Pages

Timer Interconnection System

English

Product Specifications

Product Specification

English