



Positive Lock | Positive Lock 250

TE Internal #: 170266-2

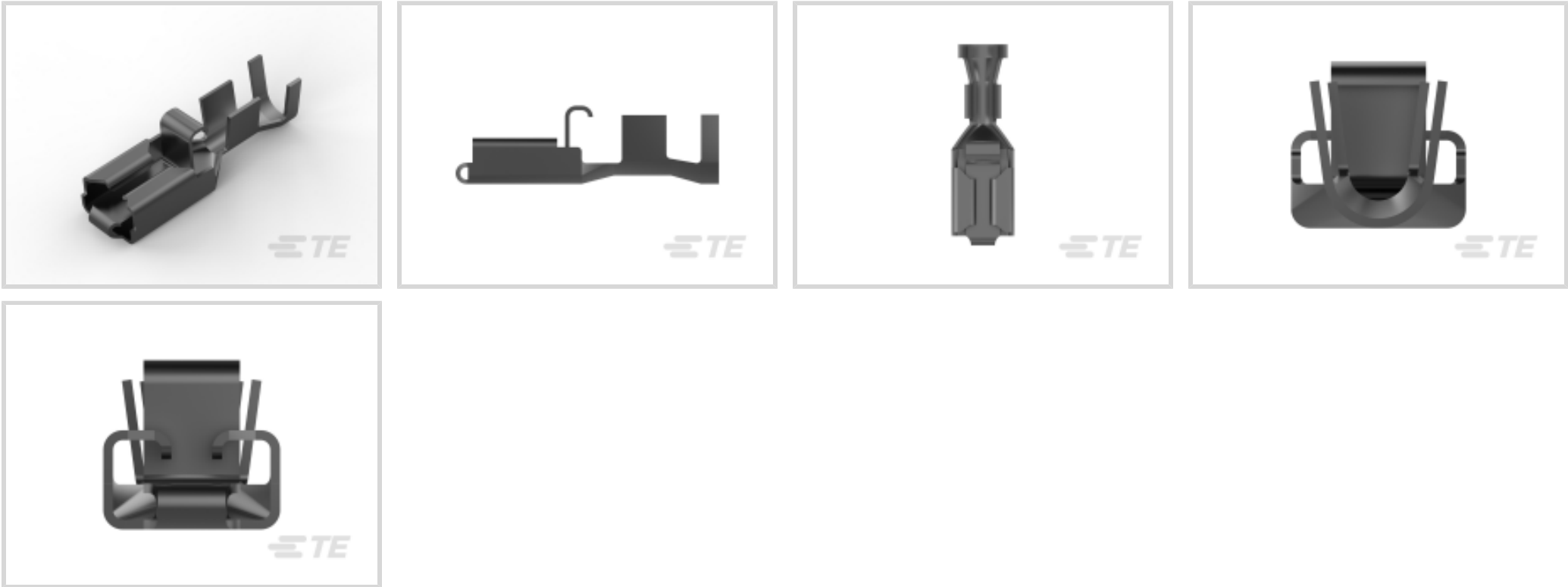
Positive Lock 250, Quick Disconnects, Receptacle, 12 – 10AWG

Wire Size, 3.31 – 5.26mm² Wire Size, Quick Disconnect Mating Tab

Width 6.35 mm [.25 in]

[View on TE.com >](#)

Terminals & Splices > Quick Disconnects



Terminal & Splice Type: **Receptacle**

Wire Size: **3.31 – 5.26 mm²**

Quick Disconnect Mating Tab Width: **6.35 mm [.25 in]**

Quick Disconnect Mating Tab Thickness: **.81 mm [.032 in]**

Features

Product Type Features

Wire Stop	No
Wire/Cable Type	Discrete Wire
Terminates To	Wire & Cable
Quick Disconnect Insertion Force	Low
Insulated	No

Body Features

Fully Insulated	No
Quick Disconnect Plating Material	Tin

Contact Features

Terminal Type	Receptacle
Terminal & Splice Type	Receptacle
Quick Disconnect Terminal Orientation	Straight
Contact Base Material	Brass
Crimp Type	F-Crimp
Barrel Type	Open



Mechanical Attachment

Mating Retention Type	Dimple
Extraction Force	7 – 100 Newton
Wire Insulation Support	With

Dimensions

Accepts Wire Insulation Diameter Range	3.81 – 5.08 mm[.15 – .2 in]
Overall Length	23 mm[.905 in]
Receptacle Terminal Stock Thickness	.6 mm[.023 in]
Wire Size	3.31 – 5.26 mm²
Quick Disconnect Mating Tab Width	6.35 mm[.25 in]
Quick Disconnect Mating Tab Thickness	.81 mm[.032 in]

Usage Conditions

Insulation Requirement	Uninsulated
Operating Temperature Range	-40 – 110 °C[-40 – 230 °F]

Industry Standards

UL Rating	Recognized
-----------	------------

Packaging Features

Packaging Quantity	1000
Quick Disconnect Packaging Method	Loose Piece/Carton

Product Compliance

For compliance documentation, visit the product page on TE.com>

EU RoHS Directive 2011/65/EU	Compliant
EU ELV Directive 2000/53/EC	Compliant
China RoHS 2 Directive MIIT Order No 32, 2016	No Restricted Materials Above Threshold
EU REACH Regulation (EC) No. 1907/2006	Current ECHA Candidate List: JAN 2021 (211) Candidate List Declared Against: JAN 2021 (211) Does not contain REACH SVHC
Halogen Content	Low Halogen - Br, Cl, F, I < 900 ppm per homogenous material. Also BFR/CFR/PVC Free
Solder Process Capability	Not applicable for solder process capability








Product Compliance Disclaimer

This information is provided based on reasonable inquiry of our suppliers and represents our current actual knowledge based on the information they provided. This information is subject to change. The part numbers that TE has identified as EU RoHS compliant have a maximum concentration of 0.1% by weight in homogenous materials for lead, hexavalent chromium, mercury, PBB, PBDE, DBP, BBP, DEHP, DIBP, and 0.01% for cadmium, or qualify for an exemption to these limits as defined in the Annexes of Directive 2011/65/EU (RoHS2). Finished electrical and electronic equipment products will be CE marked as required by Directive 2011/65/EU. Components may not be CE marked. Additionally, the part numbers that TE has identified as EU ELV compliant have a maximum concentration of 0.1% by weight in homogenous materials for lead, hexavalent chromium, and mercury, and 0.01% for cadmium, or qualify for an exemption to these limits as defined in the Annexes of Directive 2000/53/EC (ELV). Regarding the REACH Regulation, the information TE provides on SVHC in articles for this part number is based on the latest European Chemicals Agency (ECHA) ‘Guidance on requirements for substances in articles’ posted at this URL: <https://echa.europa.eu/guidance-documents/guidance-on-reach>

Compatible Parts

 <p>TE Part # 171809-2 POSITIVE LOCK (PL) HOUSING</p>	 <p>TE Part # 171809-1 POSITIVE LOCK (PL) HOUSING</p>	 <p>TE Part # 723712-1 DAHT POS LOCK REC 22-20 ASSY</p>	 <p>TE Part # 784640-1 EXT TOOL FOR POS LOCK MKI</p>
--	---	--	---

Also in the Series | Positive Lock 250

 <p>Automotive Terminals(1)</p>	 <p>Crimp Terminal Housings(203)</p>	 <p>Insertion &amp; Extraction Tools(3)</p>	 <p>Insulation Boots &amp; Sleeves(6)</p>
 <p>Quick Disconnects(189)</p>			

Customers Also Bought



TE Part #1-177648-8  
DYNAMIC 3100 REC AND TAB HSG

TE Part #170187-2  
250 FASTON, REC., 22-18 AWG, TPBR

TE Part #170265-2  
PL 250 REC 12-10 AWG 0.406 X 42.3

TE Part #154719-2  
PL 250 REC HSG 1P NYLON RED

TE Part #DT06-12SD  
DEUTSCH DT Series Housings & Connectors

TE Part #1-316081-3  
DYNAMIC 3200 HDR ASSY

TE Part #1-1456426-5  
MCON, CONNECTOR HOUSING

TE Part #1418850-1  
MCON, RECEPTACLE AND TAB

TE Part #1-2273099-1  
M12 A-CODE FEMALE R/A PIGTAIL

Documents

Product Drawings

POSITIVE LOCK RECEPTACLE ELECTRO TPBR

Japanese

CAD Files

3D PDF

3D

Customer View Model

ENG\_CVM\_CVM\_170266-2\_C.2d\_dxf.zip

English

Customer View Model

ENG\_CVM\_CVM\_170266-2\_C.3d\_igs.zip

English

Customer View Model

ENG\_CVM\_CVM\_170266-2\_C.3d\_stp.zip

English

By downloading the CAD file I accept and agree to the [Terms and Conditions](#) of use.

Product Specifications



Product Specification

English

1-Position, Positive Lock Connector

English