



Connectors > PCB Connectors > Wire-to-Board Connectors > Wire-to-Board Connector Assemblies & Housings



Connector Product Type: **Housing**

Connector & Housing Type: **Receptacle**

Connector System: **Wire-to-Board**

Number of Positions: **7**

Centerline (Pitch): **5 mm [.197 in]**

Features

Product Type Features

Connector Product Type	Housing
Connector & Housing Type	Receptacle
Connector System	Wire-to-Board
Sealable	No
Connector & Contact Terminates To	Wire & Cable

Configuration Features

Keying & Polarized Rib Location	5 + 6
Number of Positions	7
Number of Rows	1

Termination Features

Termination Method to Wire & Cable	Insulation Displacement Crimp (IDC)
------------------------------------	-------------------------------------

Mechanical Attachment

Locking Latch Between Cavity Number	1 + 2, 6 + 7
Mating Retention Type	Lock



Mating Retention	With
Connector Mounting Type	Cable Mount (Free-Hanging)

Housing Features

Housing Material	PA 6.6
Centerline (Pitch)	5 mm[.197 in]
Housing Color	Natural

Usage Conditions

Operating Temperature Range	-40 – 105 °C[-40 – 221 °F]
-----------------------------	----------------------------

Operation/Application

Circuit Application	Power & Signal
---------------------	----------------

Industry Standards

UL Flammability Rating	UL 94V-2
------------------------	----------

Packaging Features

Packaging Quantity	750
Packaging Method	Bag/Box

Product Compliance

For compliance documentation, visit the product page on [TE.com](#)>

EU RoHS Directive 2011/65/EU	Compliant
EU ELV Directive 2000/53/EC	Compliant
China RoHS 2 Directive MIIT Order No 32, 2016	No Restricted Materials Above Threshold
EU REACH Regulation (EC) No. 1907/2006	Current ECHA Candidate List: JAN 2021 (211) Candidate List Declared Against: JAN 2021 (211) Does not contain REACH SVHC
Halogen Content	Low Halogen - Br, Cl, F, I < 900 ppm per homogenous material. Also BFR/CFR/PVC Free
Solder Process Capability	Not applicable for solder process capability

Product Compliance Disclaimer

This information is provided based on reasonable inquiry of our suppliers and represents our current actual knowledge based on the information they provided. This information is subject to change. The part numbers that TE has identified as EU RoHS compliant have a maximum concentration of 0.1% by weight in homogenous materials for lead, hexavalent chromium, mercury, PBB, PBDE, DBP, BBP, DEHP, DIBP, and 0.01% for cadmium, or qualify for an exemption to these limits as defined in the Annexes of Directive 2011/65/EU (RoHS2). Finished electrical and electronic equipment products



will be CE marked as required by Directive 2011/65/EU. Components may not be CE marked. Additionally, the part numbers that TE has identified as EU ELV compliant have a maximum concentration of 0.1% by weight in homogenous materials for lead, hexavalent chromium, and mercury, and 0.01% for cadmium, or qualify for an exemption to these limits as defined in the Annexes of Directive 2000/53/EC (ELV). Regarding the REACH Regulation, the information TE provides on SVHC in articles for this part number is based on the latest European Chemicals Agency (ECHA) 'Guidance on requirements for substances in articles' posted at this URL: <https://echa.europa.eu/guidance-documents/guidance-on-reach>

Compatible Parts

 <p>TE Part # 1703104-1 5 POS MT - EDGE HOUSING</p>	 <p>TE Part # 1703129-1 8POS MT - EDGE HOUSING</p>	 <p>TE Part # 1703081-1 3POS MT - EDGE HOUSING</p>	 <p>TE Part # 927157-1 4P MT-EDGE GEH</p>
 <p>TE Part # 928017-1 6P MT-EDGE GEH</p>	 <p>TE Part # 927155-1 2P MT-EDGE GEH</p>	 <p>TE Part # 927156-1 3P MT-EDGE GEH</p>	 <p>TE Part # 1703128-1 8POS MT - EDGE HOUSING</p>
 <p>TE Part # 1-1703072-5 2POS MT-EDGE HOUSING</p>	 <p>TE Part # 1-1703077-1 2POS MT-EDGE HOUSING</p>	 <p>TE Part # 1-1703095-1 4POS MT - EDGE HOUSING</p>	 <p>TE Part # 1703071-1 2POS MT-EDGE HOUSING</p>
 <p>TE Part # 1703073-1 2POS MT-EDGE HOUSING</p>	 <p>TE Part # 1703098-1 4POS MT - EDGE HOUSING</p>	 <p>TE Part # 1703111-1 6POS MT - EDGE HOUSING</p>	 <p>TE Part # 1703114-1 6POS MT - EDGE HOUSING</p>

Also in the Series | RAST 5 IDC Connectors



Automotive Terminals(8)



Connector Contacts(12)



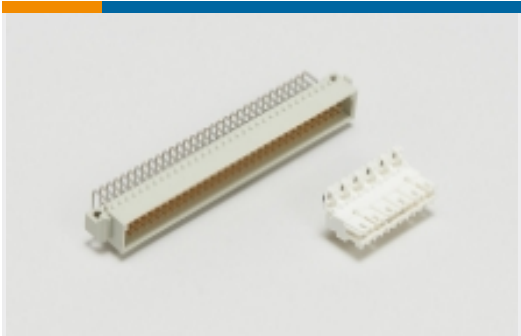
Crimp Terminal Housings(41)



Insertion & Extraction Tools(1)



Rectangular Connector Housings(1)



Standard Edge Connectors(36)



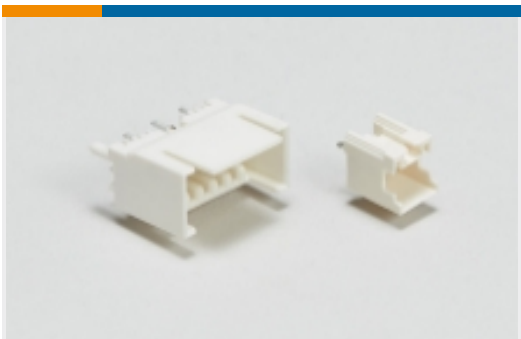
Standard Rectangular Connectors(138)



Wire-to-Board Connector Assemblies & Housings(214)



Wire-to-Board Connector Contacts(2)



Wire-to-Board Headers & Receptacles (424)

Also in the Series | RAST 5D



Automotive Terminals(4)



Connector Contacts(10)



Insertion & Extraction Tools(1)



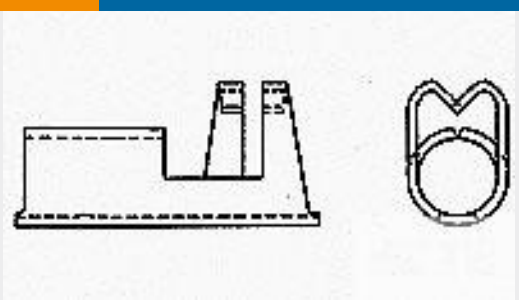
Wire-to-Board Connector Assemblies & Housings(92)



Wire-to-Board Headers & Receptacles (84)



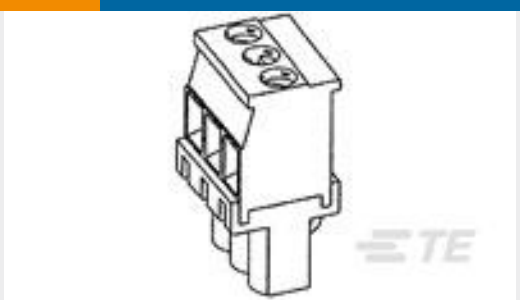
Customers Also Bought



TE Part #34482
TERMINAL,SPARK PLUG STR 7MM



TE Part #1703081-1
3POS MT - EDGE HOUSING



TE Part #1986370-2
Str Plug, 3.5mm, Green, RH, 2



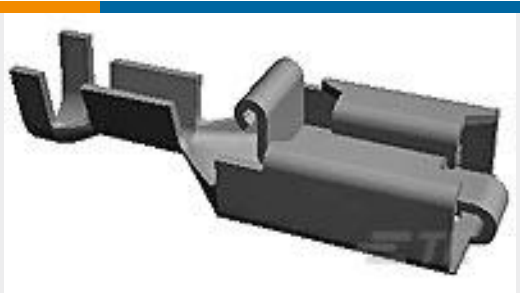
TE Part #1703100-1
4POS MT - EDGE HOUSING



TE Part #4331970001
TRSA-1018/C/1/8



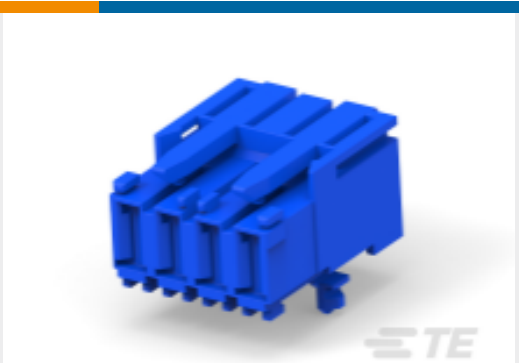
TE Part #1241171-4
MULTIFIT STE MK2 4P



TE Part #927853-7
POSITIVE LOCK REC 0.5-1.0 MM2 PTP CUSN 4



TE Part #1534077-4
MULTIFITING MK2 ASSY,4POS



TE Part #2178661-4
MULTIFIT MK2 ASSY4P,AR



TE Part #2564054002
LSTT-12.7-X-SP

Documents

Product Drawings
7POS MT - EDGE HOUSING

English

CAD Files
3D PDF

3D

Customer View Model
ENG_CVM_CVM_1703119-1_B.2d_dxf.zip

English

Customer View Model
ENG_CVM_CVM_1703119-1_B.3d_igs.zip

English

Customer View Model
ENG_CVM_CVM_1703119-1_B.3d_stp.zip

English

By downloading the CAD file I accept and agree to the Terms and Conditions of use.

1703119-1

RAST 5 IDC Connectors, Housing, Receptacle, Wire-to-Board, 7 Position, 5mm [.197in] Centerline, Insulation Displacement Crimp (IDC), 1 Row

