



MATE-N-LOK | Commercial MATE-N-LOK

TE Internal #: 925075  
Commercial MATE-N-LOK, Rectangular Power Connectors,  
Housing, Receptacle / Plug, Wire-to-Wire, 4 Position, 5.08mm [.2in]  
Centerline, Wire & Cable  
[View on TE.com >](#)

Connectors > Power Connectors > Rectangular Power > Rectangular Power Connectors



Rectangular Power Connector Type: **Housing**  
Connector & Housing Type: **Plug, Receptacle**  
Connector System: **Wire-to-Wire**  
Number of Positions: **4**  
Centerline (Pitch): **5.08 mm [ .2 in ]**

Features

Product Type Features

|                                   |                  |
|-----------------------------------|------------------|
| Rectangular Power Connector Type  | Housing          |
| Connector & Housing Type          | Plug, Receptacle |
| Connector System                  | Wire-to-Wire     |
| Connector & Contact Terminates To | Wire & Cable     |

Configuration Features

|                            |             |
|----------------------------|-------------|
| Number of Positions        | 4           |
| Seal Type                  | Single Wire |
| Number of Power Positions  | 4           |
| Number of Signal Positions | 4           |
| Number of Rows             | 2           |

Electrical Characteristics

|                   |         |
|-------------------|---------|
| Operating Voltage | 250 VDC |
|-------------------|---------|

Contact Features

|                              |      |
|------------------------------|------|
| Contact Current Rating (Max) | 15 A |
|------------------------------|------|



|                                  |             |
|----------------------------------|-------------|
| Contact Retention Within Housing | With        |
| Contact Type                     | Pin, Socket |

Termination Features

|                                    |       |
|------------------------------------|-------|
| Termination Method to Wire & Cable | Crimp |
|------------------------------------|-------|

Mechanical Attachment

|                         |                            |
|-------------------------|----------------------------|
| Connector Mounting Type | Cable Mount (Free-Hanging) |
|-------------------------|----------------------------|

Housing Features

|                    |                |
|--------------------|----------------|
| Centerline (Pitch) | 5.08 mm[.2 in] |
| Housing Color      | Natural        |
| Housing Material   | Nylon          |

Dimensions

|                    |                |
|--------------------|----------------|
| Row-to-Row Spacing | 5.08 mm[.2 in] |
|--------------------|----------------|

Usage Conditions

|                             |                            |
|-----------------------------|----------------------------|
| Operating Temperature Range | -55 – 105 °C[-67 – 221 °F] |
|-----------------------------|----------------------------|

Operation/Application

|                     |                |
|---------------------|----------------|
| Circuit Application | Power & Signal |
|---------------------|----------------|

Industry Standards

|                        |                               |
|------------------------|-------------------------------|
| UL Flammability Rating | UL 94V-2                      |
| Glow Wire Rating       | Standard Part - Not Glow Wire |

Packaging Features

|                  |            |
|------------------|------------|
| Packaging Method | Bag/Carton |
|------------------|------------|

Product Compliance

For compliance documentation, visit the product page on TE.com>

|   |   |
|---|---|
| EU RoHS Directive 2011/65/EU                  | Compliant   |
| EU ELV Directive 2000/53/EC                   | Compliant   |
| China RoHS 2 Directive MIIT Order No 32, 2016 | No Restricted Materials Above Threshold   |
| EU REACH Regulation (EC) No. 1907/2006        | Current ECHA Candidate List: JAN 2021 (211)<br>Candidate List Declared Against: JAN 2021 (211)<br>Does not contain REACH SVHC |
| Halogen Content                               | Low Halogen - Br, Cl, F, I < 900 ppm per  |



homogenous material. Also BFR/CFR/PVC Free

Solder Process Capability

Not applicable for solder process capability

Product Compliance Disclaimer

This information is provided based on reasonable inquiry of our suppliers and represents our current actual knowledge based on the information they provided. This information is subject to change. The part numbers that TE has identified as EU RoHS compliant have a maximum concentration of 0.1% by weight in homogenous materials for lead, hexavalent chromium, mercury, PBB, PBDE, DBP, BBP, DEHP, DIBP, and 0.01% for cadmium, or qualify for an exemption to these limits as defined in the Annexes of Directive 2011/65/EU (RoHS2). Finished electrical and electronic equipment products will be CE marked as required by Directive 2011/65/EU. Components may not be CE marked. Additionally, the part numbers that TE has identified as EU ELV compliant have a maximum concentration of 0.1% by weight in homogenous materials for lead, hexavalent chromium, and mercury, and 0.01% for cadmium, or qualify for an exemption to these limits as defined in the Annexes of Directive 2000/53/EC (ELV). Regarding the REACH Regulation, the information TE provides on SVHC in articles for this part number is based on the latest European Chemicals Agency (ECHA) ‘Guidance on requirements for substances in articles’ posted at this URL: <https://echa.europa.eu/guidance-documents/guidance-on-reach>

Compatible Parts

TE Part # 925076-3  
4W CIRCULAR MATE-N-LOK SOCKET  
HSG BLK

TE Part # 925076  
4W CIRCULAR MATE-N-LOK SOCKET  
HSG NAT

TE Part # 925075-7  
4W CIRCULAR MATE-N-LOK PIN HSG  
NAT

Also in the Series | Commercial MATE-N-LOK

Connector Contacts(26)

Crimp Wire Pins, Tabs & Ferrules(3)

Insertion & Extraction Tools(5)

Power Contacts(129)

Rectangular Caps & Covers(2)

Rectangular Connector Housings(17)

Rectangular Connector Seals(1)

Rectangular Power Connectors(171)



Standard Circular Connectors(4)



Standard Rectangular Connectors(10)



Wire-to-Board Connector Contacts(1)

Customers Also Bought



TE Part #1-967630-4  
TIMER, CONNECTOR HOUSING



TE Part #1-968968-3  
CIRCULAR DIN HOUSINGS



TE Part #1-962841-2  
TIMER, RECEPTACLE AND TAB



TE Part #1420001-1  
MQS VERSCHL.PLATTE



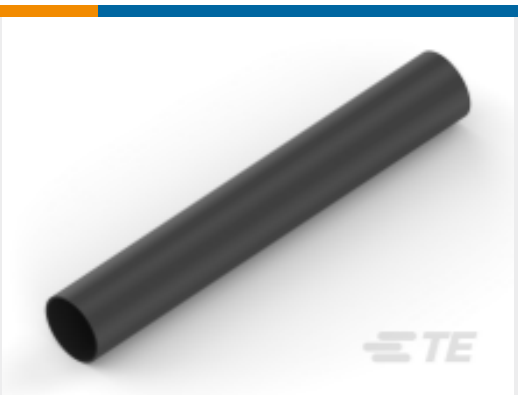
TE Part #160101-2  
RING TONGUE 20-16 AWG 0.0253  
TPBR



TE Part #144936-1  
LOCKING DEVICE MQS



TE Part #1534027-1  
MQS VERRIEGLUNG F2P



TE Part #NB09524001  
ATUM-16/4-0-SP



TE Part #1544545-3  
CLIP 2,8 E.D. 0,2-

Documents

Product Drawings

4W CIRCULAR MATE-N-LOK PIN HSG NAT

English

CAD Files

3D PDF

3D

Customer View Model

ENG\_CVM\_CVM\_925075\_G.2d\_dxf.zip



English

Customer View Model

[ENG\\_CVM\\_CVM\\_925075\\_G.3d\\_igs.zip](#)

English

Customer View Model

[ENG\\_CVM\\_CVM\\_925075\\_G.3d\\_stp.zip](#)

English

By downloading the CAD file I accept and agree to the [Terms and Conditions](#) of use.

Product Environmental Compliance

TE Material Declaration

English