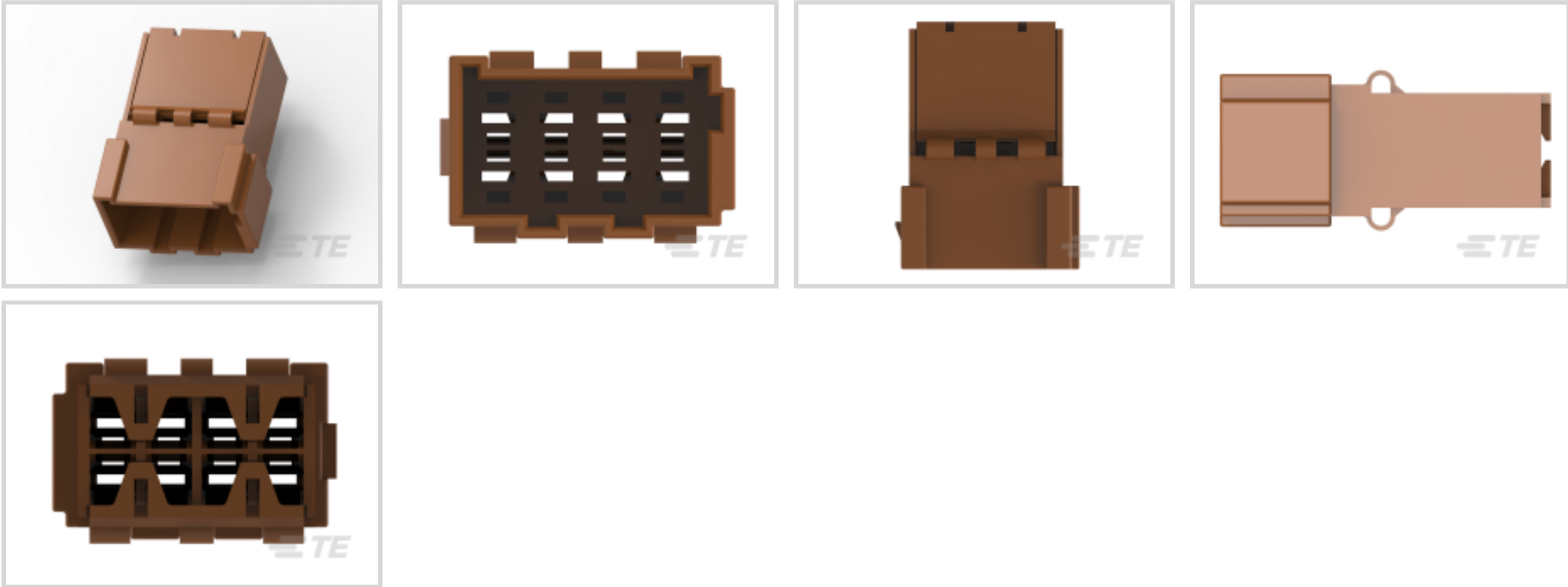




Connectors > Automotive Connectors > Connector Housings > TIMER, CONNECTOR HOUSING



Connector & Housing Type: **Housing for Male Terminals**

Mating Tab Width: **2.8 mm [.11 in]**

Connector System: **Wire-to-Wire**

Number of Positions: **8**

Centerline (Pitch): **5.08 mm [.2 in]**

[All TIMER, CONNECTOR HOUSING \(538\)](#)

Features

Product Type Features

Connector & Housing Type	Housing for Male Terminals
Connector System	Wire-to-Wire
Sealable	No
Hybrid Connector	No
Primary Locking Feature	Integrated in Housing
Connector & Contact Terminates To	Wire & Cable

Configuration Features

Number of Positions	8
Number of Rows	2

Body Features

Cable Exit Angle	180°
Body Material	PA
Primary Product Color	Brown



Connector Code	D
----------------	---

Contact Features

Mating Tab Width	2.8 mm[.11 in]
------------------	----------------

Mechanical Attachment

Mounting Feature	Without
Terminal Position Assurance	No
Strain Relief	No
Mating Alignment Type	Polarized

Housing Features

Centerline (Pitch)	5.08 mm[.2 in]
--------------------	----------------

Dimensions

Product Width	33.7 mm[1.32 in]
Product Length	25.1 mm[.988 in]
Product Height	16 mm[.629 in]
Row-to-Row Spacing	5.08 mm[.2 in]

Usage Conditions

Operating Temperature (Max)	130 °C[266 °F]
Operating Temperature Range	-40 – 130 °C[-40 – 266 °F]

Packaging Features

Packaging Quantity	1000
Packaging Method	Carton

Other

Serviceable	No
Connector Position Assurance Capable	No

Product Compliance

For compliance documentation, visit the product page on [TE.com](#)>

EU RoHS Directive 2011/65/EU	Compliant
EU ELV Directive 2000/53/EC	Compliant
China RoHS 2 Directive MIIT Order No 32, 2016	No Restricted Materials Above Threshold
EU REACH Regulation (EC) No. 1907/2006	Current ECHA Candidate List: JAN 2021 (211)



Candidate List Declared Against: JAN 2019 (197)
SVHC > Threshold:
Not Yet Reviewed

Halogen Content	Low Halogen - Br, Cl, F, I < 900 ppm per homogenous material. Also BFR/CFR/PVC Free
-----------------	---

Solder Process Capability	Not applicable for solder process capability
---------------------------	--

Product Compliance Disclaimer

This information is provided based on reasonable inquiry of our suppliers and represents our current actual knowledge based on the information they provided. This information is subject to change. The part numbers that TE has identified as EU RoHS compliant have a maximum concentration of 0.1% by weight in homogenous materials for lead, hexavalent chromium, mercury, PBB, PBDE, DBP, BBP, DEHP, DIBP, and 0.01% for cadmium, or qualify for an exemption to these limits as defined in the Annexes of Directive 2011/65/EU (RoHS2). Finished electrical and electronic equipment products will be CE marked as required by Directive 2011/65/EU. Components may not be CE marked. Additionally, the part numbers that TE has identified as EU ELV compliant have a maximum concentration of 0.1% by weight in homogenous materials for lead, hexavalent chromium, and mercury, and 0.01% for cadmium, or qualify for an exemption to these limits as defined in the Annexes of Directive 2000/53/EC (ELV). Regarding the REACH Regulation, the information TE provides on SVHC in articles for this part number is based on the latest European Chemicals Agency (ECHA) 'Guidance on requirements for substances in articles' posted at this URL: <https://echa.europa.eu/guidance-documents/guidance-on-reach>

Compatible Parts




TE Part # CAT-T4827-CH8172
TIMER, CONNECTOR HOUSING

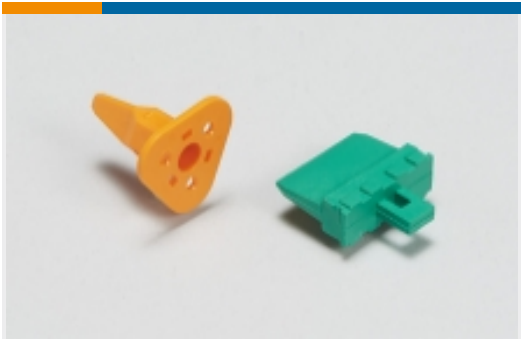


TE Part # CAT-T4827-T273
TIMER, RECEPTACLE AND TAB


Also in the Series | Timer Connector System




Automotive Connector Caps & Covers (11)



Automotive Connector Locks & Position Assurance(16)



Automotive Headers(79)



Automotive Housings(212)



Automotive Seals & Cavity Plugs(31)



Automotive Terminals(143)



Crimp Terminal Housings(13)



Insertion & Extraction Tools(20)

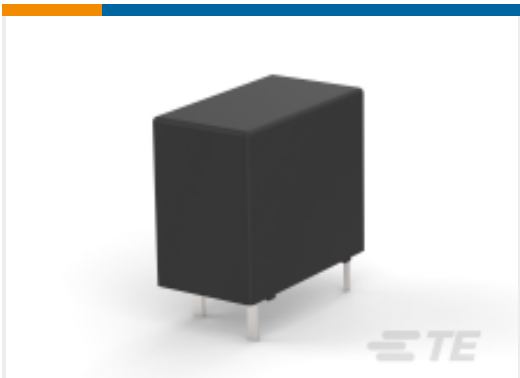


Other Automotive Connector Accessories(1)



Quick Disconnects(4)

Customers Also Bought



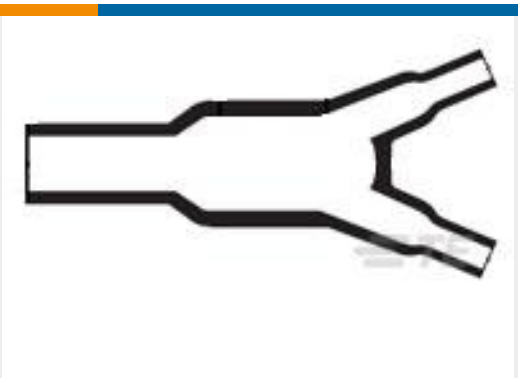
TE Part #1461492-5
STD OEG PCB OSA Power Relays



TE Part #160780-4
110 FASTON,REC.,16-20 AWG,TPBR



TE Part #1903120-1
DYNAMIC 1000 CONTACT



TE Part #F20649-000
382A012-100-G05/86-0



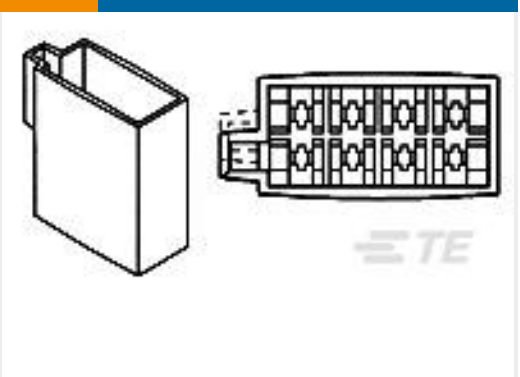
TE Part #1-962843-1
TIMER, RECEPTACLE AND TAB



TE Part #2-1564514-1
HEAVY DUTY SEALED CONNECTOR HOUSINGS



TE Part #1-962375-1
TIMER, CONNECTOR HOUSING



TE Part #106455-4
FF 110 PLUG HSG 8P.

Documents

Product Drawings
FLA-STE-GEH2,8 8P

English

CAD Files
3D PDF

3D

Customer View Model
ENG_CVM_CVM_969191-4_B.2d_dxf.zip



English

Customer View Model

[ENG_CVM_CVM_969191-4_B.3d_igs.zip](#)

English

Customer View Model

[ENG_CVM_CVM_969191-4_B.3d_stp.zip](#)

English

By downloading the CAD file I accept and agree to the [Terms and Conditions](#) of use.

Datasheets & Catalog Pages

[Timer Interconnection System](#)

English

Product Specifications

[Application Specification](#)

English