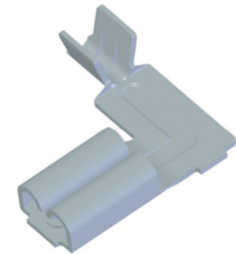


PRODUCT DATA SHEET

3765w.67

Receptacle bent – 3765 W Ms sn 2.8x0.8/1



Product Overview

SKU	1365w.67
Part description	Receptacles bent
Part designation	3765 W Ms sn 2.8x0.8/1
Net weight kg/1000	0.235

Material

Component	Brass (CuZn37)
Surface	Pure-tinned

Marking

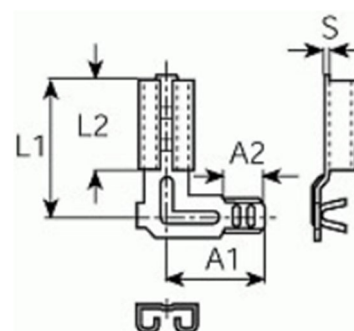
RoHS III, REACH	compliant
Conflict Minerals DRC	compliant

Technical Details

Pull-out force min. 0.5 mm ²	60N
Pull-out force min. 1.0 mm ²	90N

Dimension

Receptacles	2.8 x 0.8
Cable cross-section [mm ²]	0.5-1.0
AWG	20-18
L1 [mm]	8
L2 [mm]	5
L3 [mm]	3.3
A1 [mm]	7.2
A2 [mm]	2.5
S [mm]	0.3



© 2020 / Vogt AG Verbindungstechnik

This leaflet is for general information about the base material only and is not subject to revision.

The data given are no warranty that the product is of a specified quality and they can not replace customer's own test and expert advice regarding the application of the manufactured component.