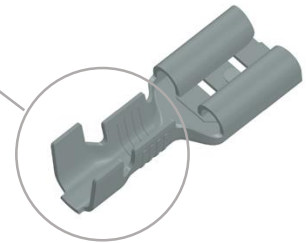


# PRODUCT DATA SHEET

**3831n.60**

**Receptacles – 3831 N Ms blank 6.3x0.8/1**

**Pre-rolled crimp zone**



## Product Overview

<b>SKU</b>	<b>3831n.60</b>
<b>Part description</b>	<b>Receptacles</b>
<b>Part designation</b>	<b>3830 N Ms blank 6.3x0.8/1</b>

### Material

Component	Brass CuZn30
Surface	clean

### Technical Details

Net weight kg/1000	0.683
Conductor cross-section	0.5 – 1.0mm <sup>2</sup> / AWG 20-18
Max. Temp. [C°]	110

### Max. rated current

Wire section 1.00 mm <sup>2</sup>	8A
Wire section 1.50 mm <sup>2</sup>	10A
Wire section 2.50 mm <sup>2</sup>	12A

### Marking

RoHS, REACH, CRMT	compliant
DIN	46247/T3

# PRODUCT DATA SHEET

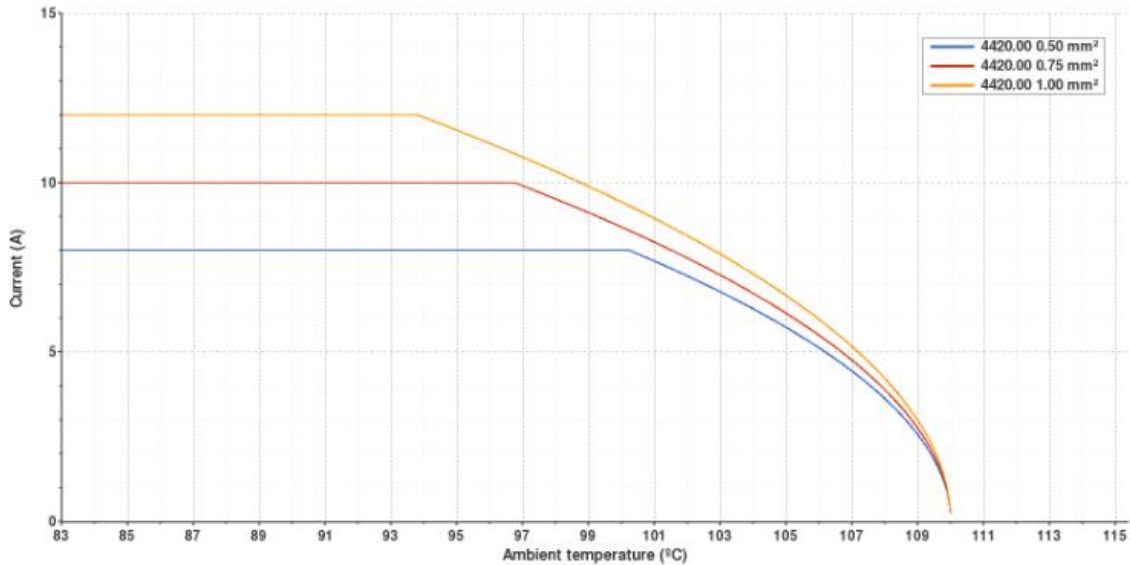
**3831n.60**

**Receptacles – 3831 N Ms blank 6.3x0.8/1**

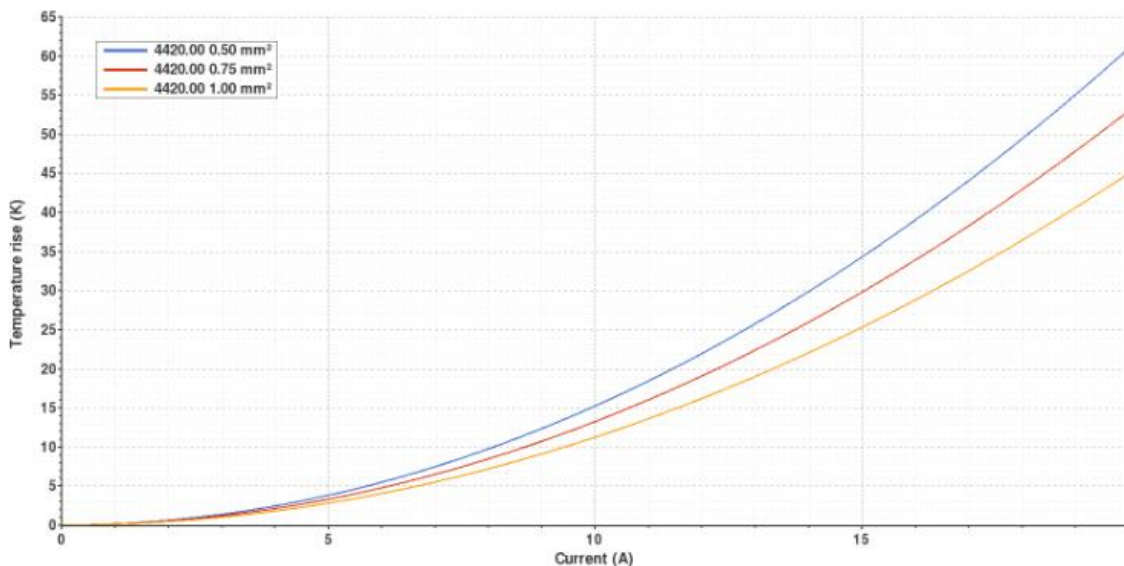
## Dimensions

(Dimensions correspond to the dimensions in the bare condition)

Derating curve      Current carrying capacity vs. Ambient temperature



Temperature rise curve      Terminal temperature rise due to the current carried



Valid for Natural Brass Tab

© 2020 / Vogt AG Verbindungstechnik

This leaflet is for general information about the base material only and is not subject to revision.

The data given are no warranty that the product is of a specified quality and they cannot replace customer's own test and release regarding the application of the manufactured component.